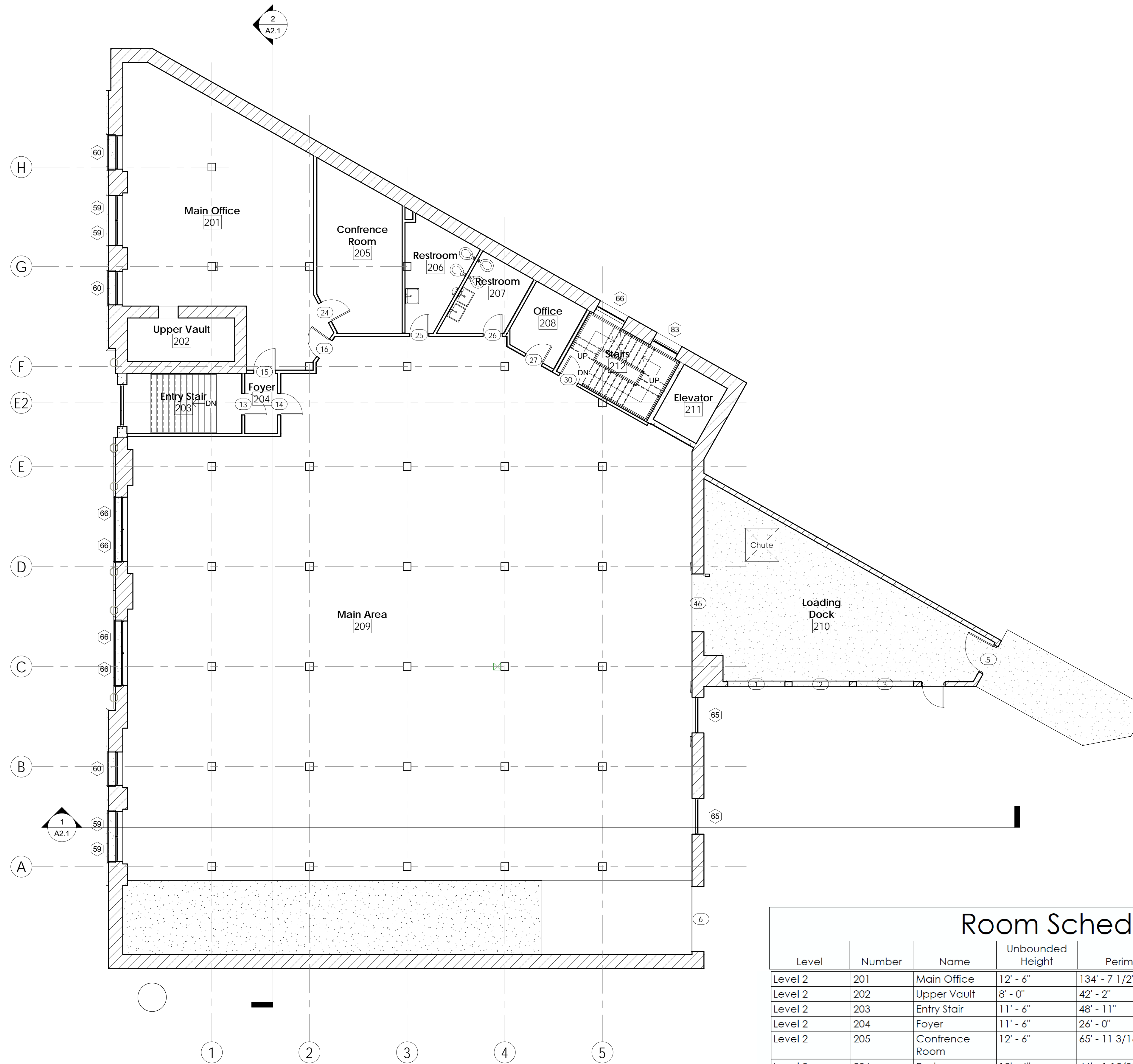


Room Schedule						
Level	Number	Name	Unbounded Height	Perimeter	Area	Volume
Level 1	101	Room	10' - 4"	307' - 1 13/16"	1653 SF	17082.96 CF
Level 1	102	Vault	10' - 4"	41' - 6"	89 SF	921.96 CF
Level 1	103	Elec. Closet	10' - 4"	69' - 6 1/2"	142 SF	1210.22 CF
Level 1	104	Open Area	10' - 4"	250' - 2"	3242 SF	33498.54 CF
Level 1	105	Room	6' - 3"	151' - 6"	653 SF	4080.30 CF
Level 1	106	Area	10' - 4"	185' - 8 17/32"	1722 SF	17794.28 CF
Level 1	107	Mech. Room	10' - 0"	95' - 8 3/4"	336 SF	3347.61 CF
Level 1	108	Room	10' - 0"	80' - 9 29/32"	250 SF	2492.09 CF
Level 1	109	Elevator	10' - 7 1/2"	31' - 6 3/4"	61 SF	651.37 CF
Level 1	110	Stairs	10' - 7 1/2"	48' - 1"	139 SF	1469.86 CF
Level 1	111	Restroom	10' - 4"	44' - 7 5/16"	115 SF	1190.80 CF
Level 1					8403 SF	83739.99 CF

These drawings and the information they contain are the property of Matthews 702 Michigan, LLC and may not be revised, reproduced, or distributed without express consent from the afore mentioned parties. (c) 2017.

702 Building
 South Main Street South Bend, IN 46637
Level 1 - Existing Floor Plan



Room Schedule						
Level	Number	Name	Unbounded Height	Perimeter	Area	Volume
Level 2	201	Main Office	12' - 6"	134' - 7 1/2"	852 SF	10651.63 CF
Level 2	202	Upper Vault	8' - 0"	42' - 2"	91 SF	730.00 CF
Level 2	203	Entry Stair	11' - 6"	48' - 11"	135 SF	1552.70 CF
Level 2	204	Foyer	11' - 6"	26' - 0"	39 SF	443.63 CF
Level 2	205	Confrence Room	12' - 6"	65' - 11 3/16"	245 SF	3068.53 CF
Level 2	206	Restroom	12' - 6"	46' - 1 15/32"	114 SF	1422.08 CF
Level 2	207	Restroom	12' - 6"	39' - 5 5/16"	89 SF	1118.33 CF
Level 2	208	Office	12' - 6"	34' - 6 21/32"	77 SF	956.86 CF
Level 2	209	Main Area	12' - 6"	352' - 4 11/16"	6288 SF	78603.80 CF
Level 2	210	Loading Dock	9' - 8"	122' - 5 17/32"	686 SF	6630.59 CF
Level 2	211	Elevator	12' - 9 1/2"	31' - 6 3/4"	61 SF	784.20 CF
Level 2	212	Stairs	12' - 9 1/2"	48' - 1"	139 SF	1763.75 CF
Level 2					8817 SF	107726.10 CF

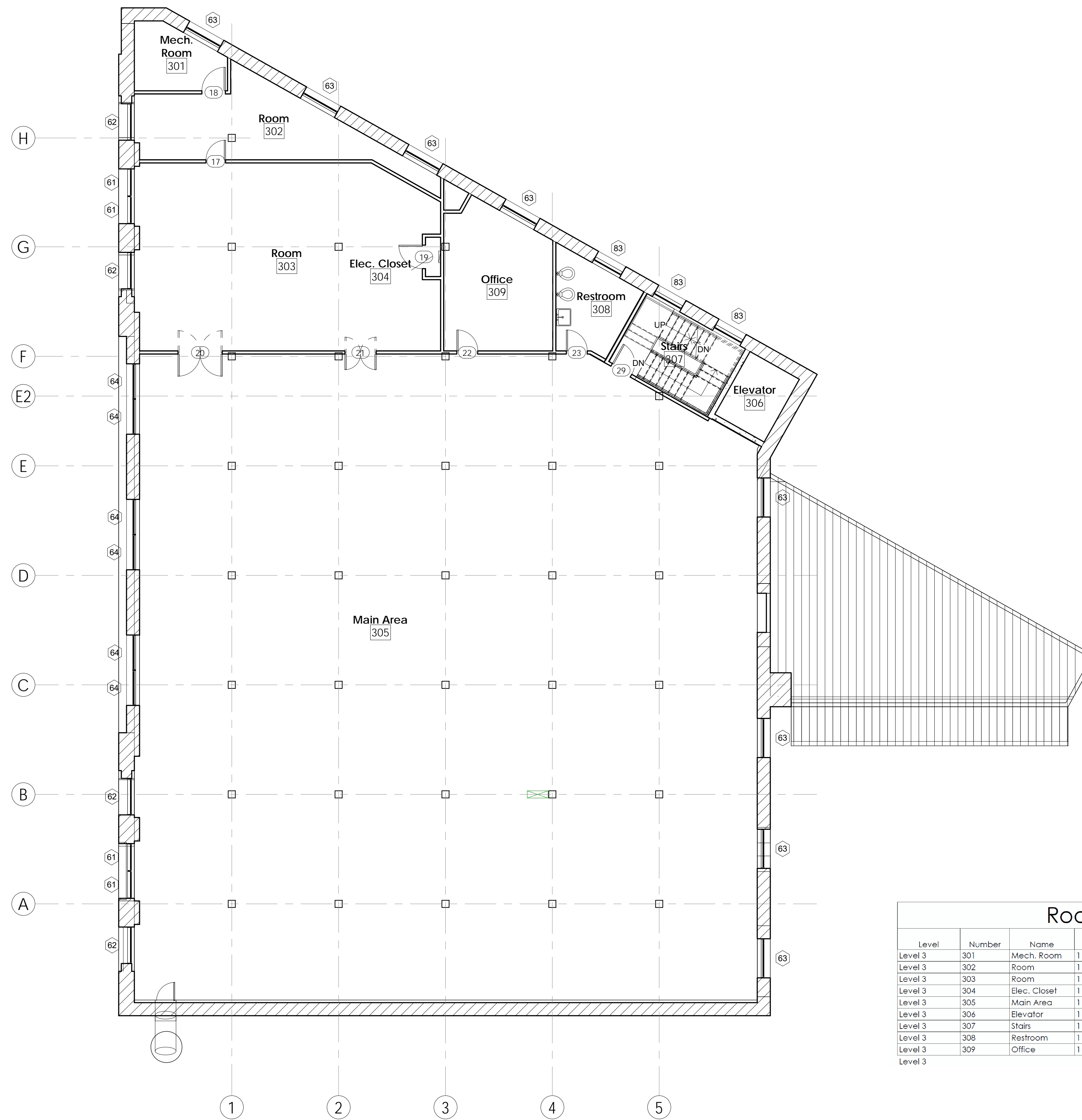
These drawings and the information they contain are the property of Mathews 702 Michigan, LLC and may not be revised, reproduced, or distributed without express consent from the afore mentioned parties. (c) 2017.

702 Building
 South Main Street South Bend, IN 46637
Level 2 - Existing Floor Plan

Project Number: _____ Project Number: _____
 Date: 12/07/17
 Drawn by: J.R. Wooden
 Checked by: _____

A1.2

Scale: 1/8" = 1'-0"



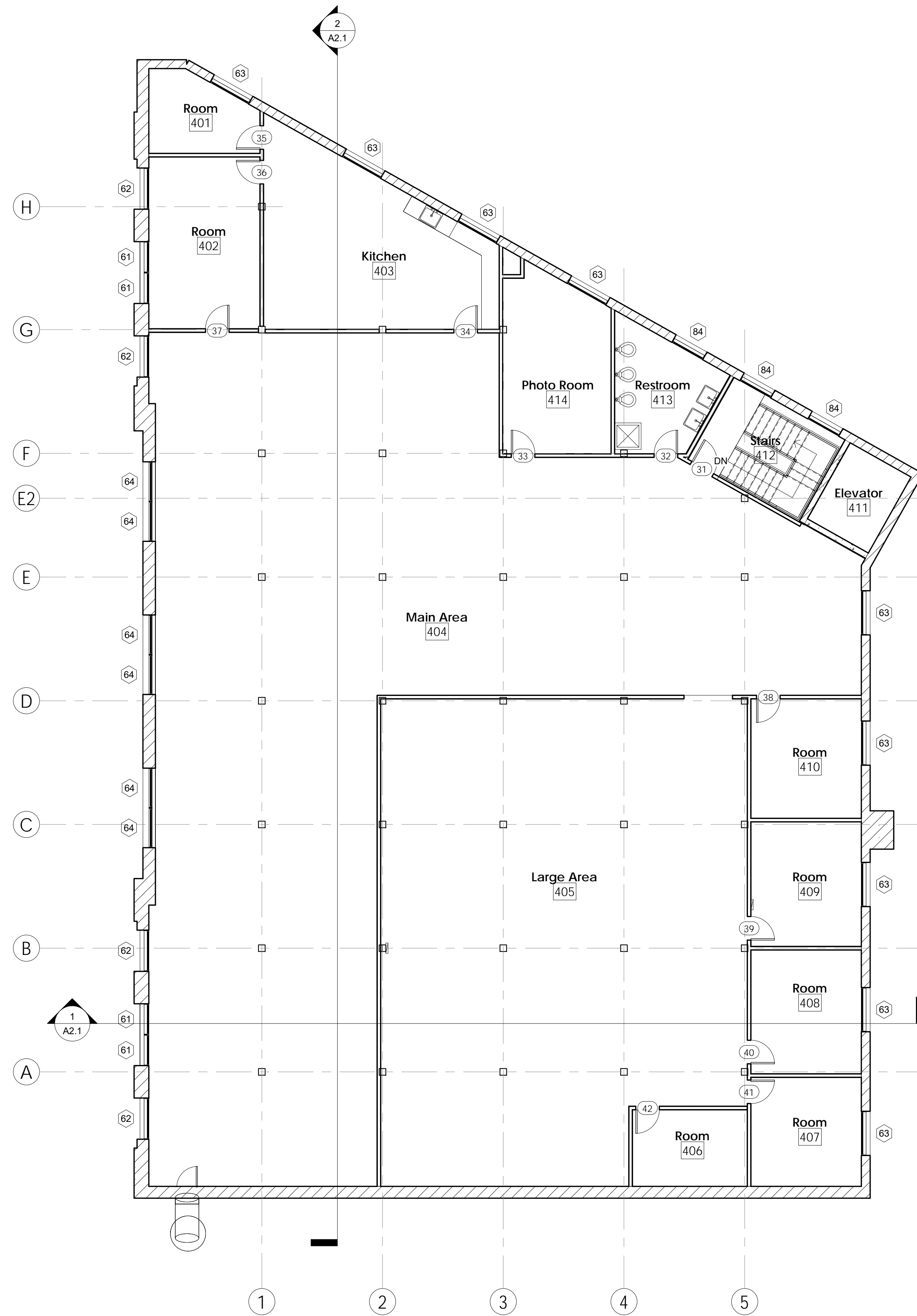
Room Schedule							
Level	Number	Name	Unbounded Height	Perimeter	Area	Volume	
Level 3	301	Mech. Room	11'-0"	38'-3 1/8"	87 SF	959.03 CF	
Level 3	302	Room	11'-0"	99'-6 13/32"	268 SF	2952.41 CF	
Level 3	303	Room	11'-0"	129'-5 11/16"	904 SF	9941.24 CF	
Level 3	304	Elec. Closet	11'-0"	13'-10 3/4"	10 SF	106.43 CF	
Level 3	305	Main Area	11'-0"	323'-7 13/16"	6453 SF	70981.93 CF	
Level 3	306	Elevator	11'-3 1/2"	32'-10 3/4"	67 SF	752.90 CF	
Level 3	307	Stairs	11'-3 1/2"	48'-9"	144 SF	1609.48 CF	
Level 3	308	Restroom	11'-0"	43'-4 11/32"	106 SF	1164.24 CF	
Level 3	309	Office	11'-0"	62'-5 7/8"	241 SF	2650.28 CF	
Level 3					8279 SF	91117.95 CF	

These drawings and the information they contain are the property of Matthews 702 Michigan, LLC and may not be revised, reproduced, or distributed without express consent from the afore mentioned parties. (c) 2017.

702 Building
South Main Street South Bend, IN 46637

Level 3 - Existing Floor Plan

Project Number:	Project Number:
Date:	12/07/17
Drawn by:	J.R. Wooden
Checked by:	
A1.3	
Scale:	1/8" = 1'-0"



Room Schedule

Level	Number	Name	Unbounded Height	Perimeter	Area	Volume
Level 4	401	Room	12' - 11"	40' - 10 13/32"	101 SF	1298.46 CF
Level 4	402	Room	12' - 11"	64' - 0 1/2"	245 SF	3146.80 CF
Level 4	403	Kitchen	12' - 2"	91' - 4 7/32"	454 SF	5491.69 CF
Level 4	404	Main Area	11' - 8"	348' - 7 3/16"	4007 SF	46084.16 CF
Level 4	405	Large Area	11' - 2"	195' - 4"	2170 SF	24063.61 CF
Level 4	406	Room	11' - 0"	43' - 4 1/4"	113 SF	1225.74 CF
Level 4	407	Room	10' - 5"	49' - 8"	154 SF	1595.50 CF
Level 4	408	Room	10' - 5"	53' - 0 1/4"	175 SF	1812.46 CF
Level 4	409	Room	10' - 5"	53' - 2 1/4"	176 SF	1823.24 CF
Level 4	410	Room	10' - 5"	52' - 0 1/4"	169 SF	1747.77 CF
Level 4	411	Elevator	10' - 5"	35' - 6 3/4"	78 SF	813.41 CF
Level 4	412	Stairs	10' - 6"	50' - 1"	153 SF	1603.20 CF
Level 4	413	Restroom	10' - 11 1/2"	49' - 6 11/32"	142 SF	1553.61 CF
Level 4	414	Photo Room	11' - 5"	64' - 5 21/32"	238 SF	2702.45 CF
Level 4					8375 SF	94962.09 CF

These drawings and the information they contain are the property of Matthews 702 Michigan, LLC and may not be revised, reproduced, or distributed without express consent from the afore mentioned parties. (c) 2017.

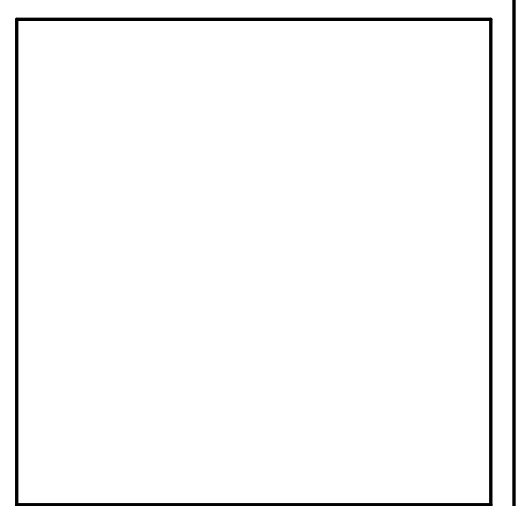
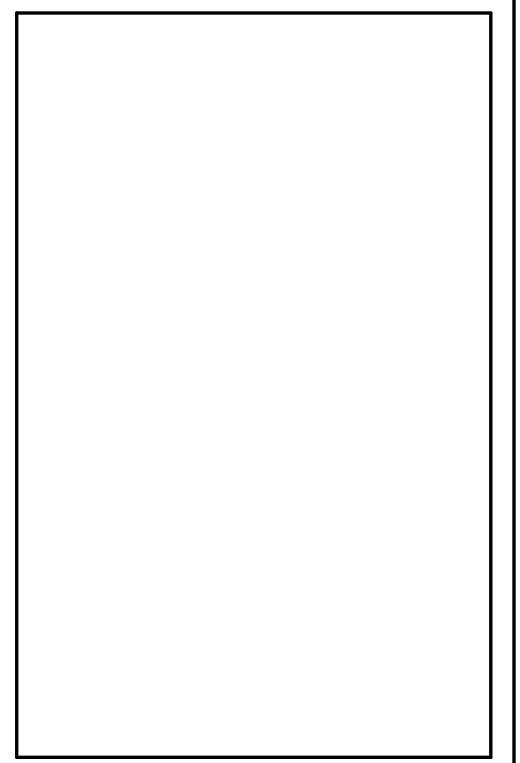
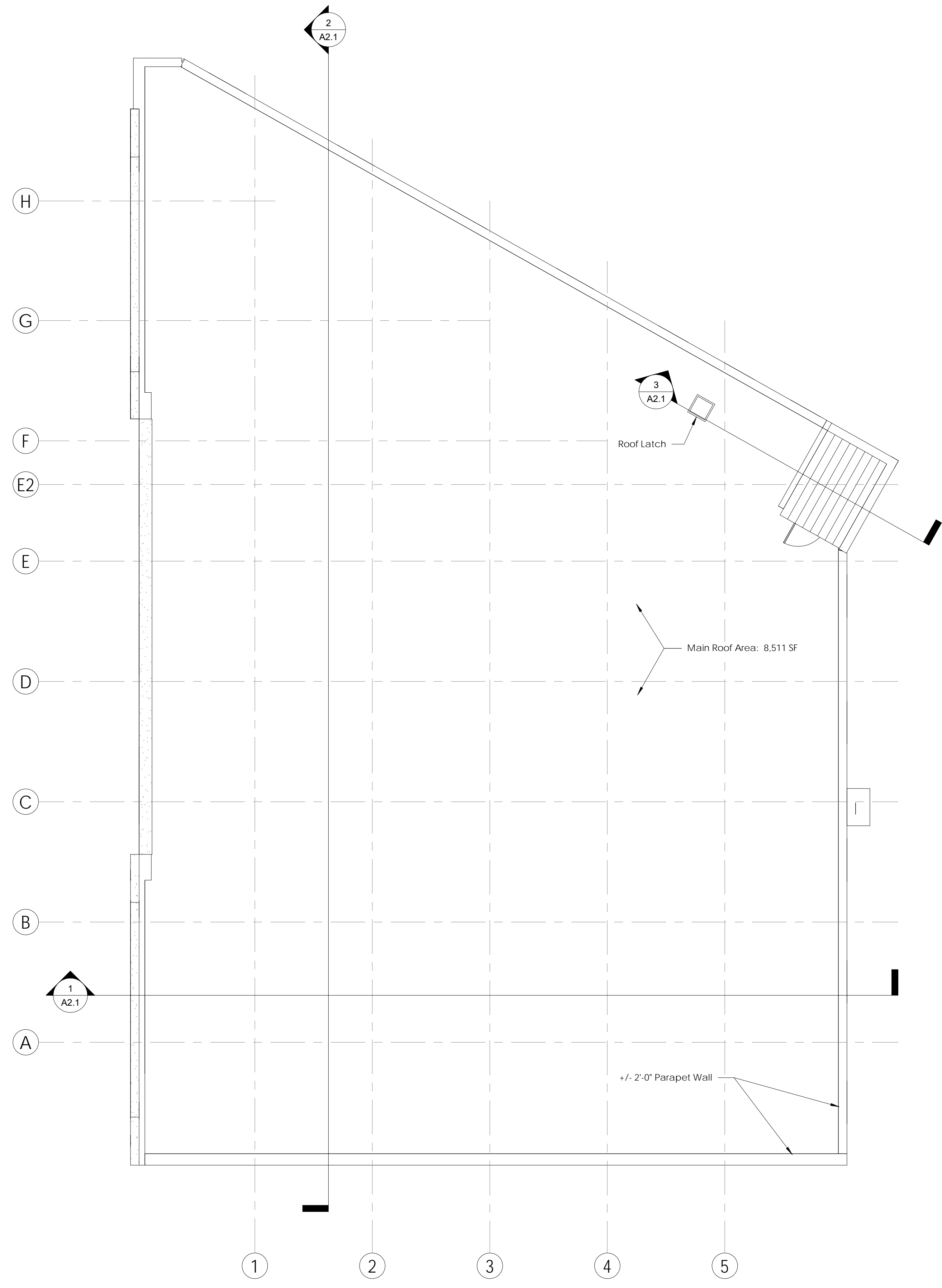
702 Building
South Main Street South Bend, IN 46637

Level 4 - Existing Floor Plan

Project Number: _____ Project Number: _____
 Date: 12/07/17
 Drawn by: J.R. Wooden
 Checked by: _____

A1.4

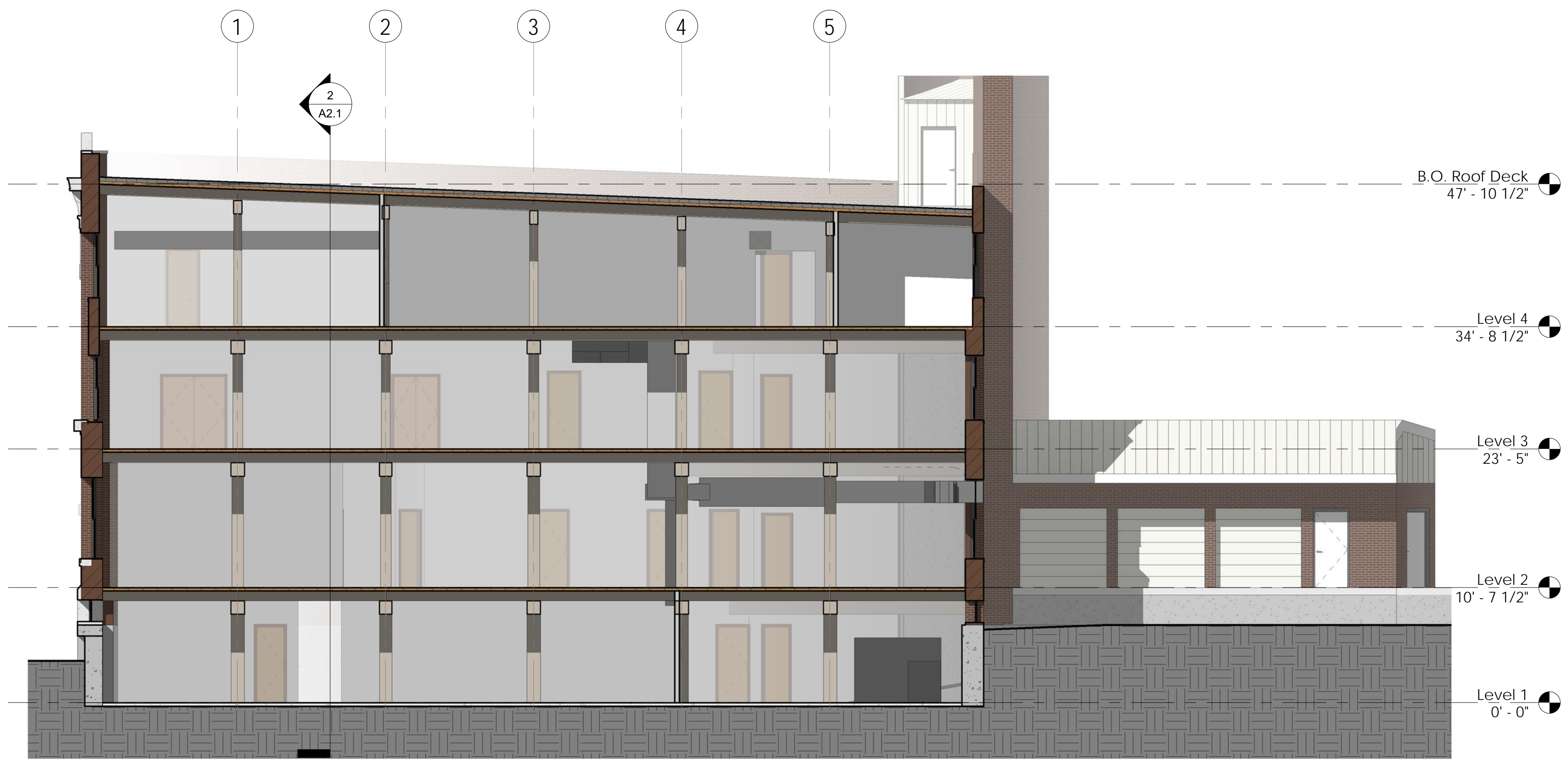
Scale: 1/8" = 1'-0"



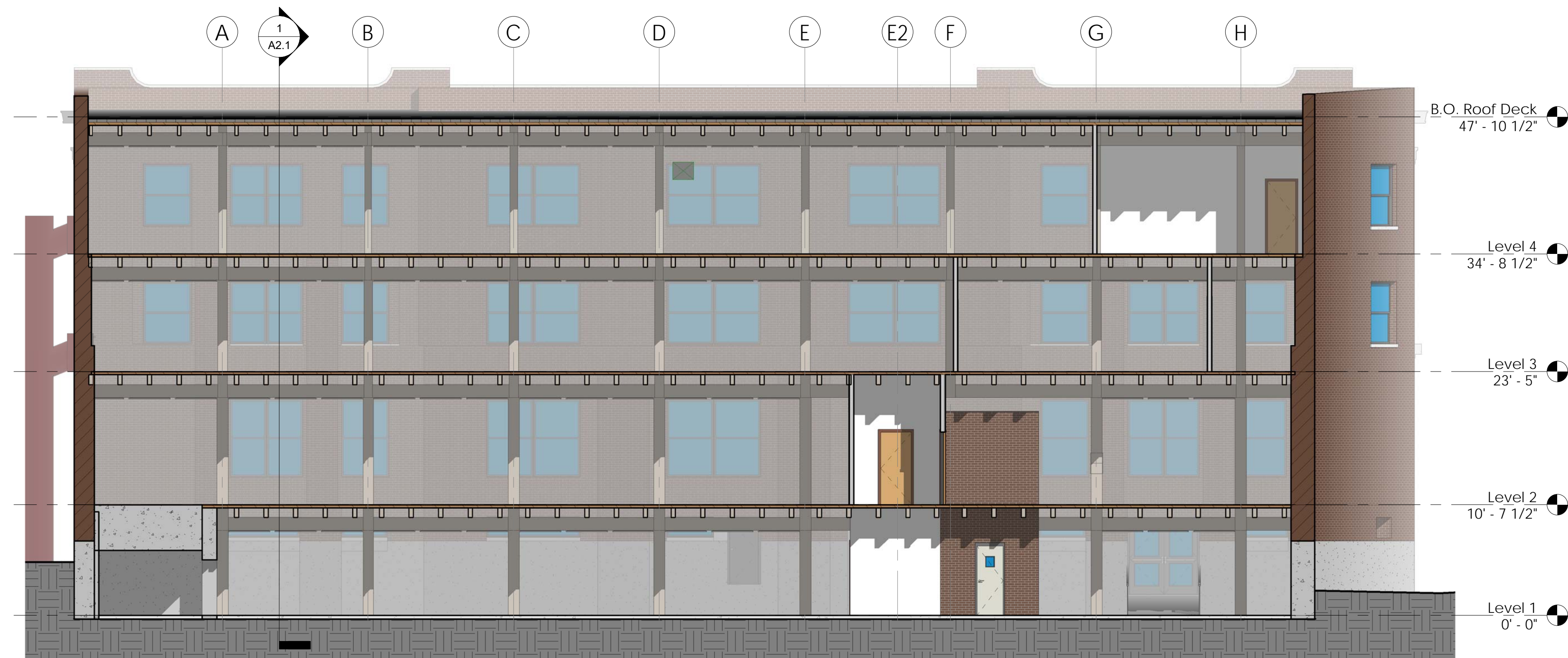
These drawings and the information they contain are the property of Matthews 702 Michigan, LLC and may not be revised, reproduced, or distributed without express consent from the afore mentioned parties. (c) 2017.

702 Building
 South Main Street South Bend, IN 46637
Existing Roof Plan

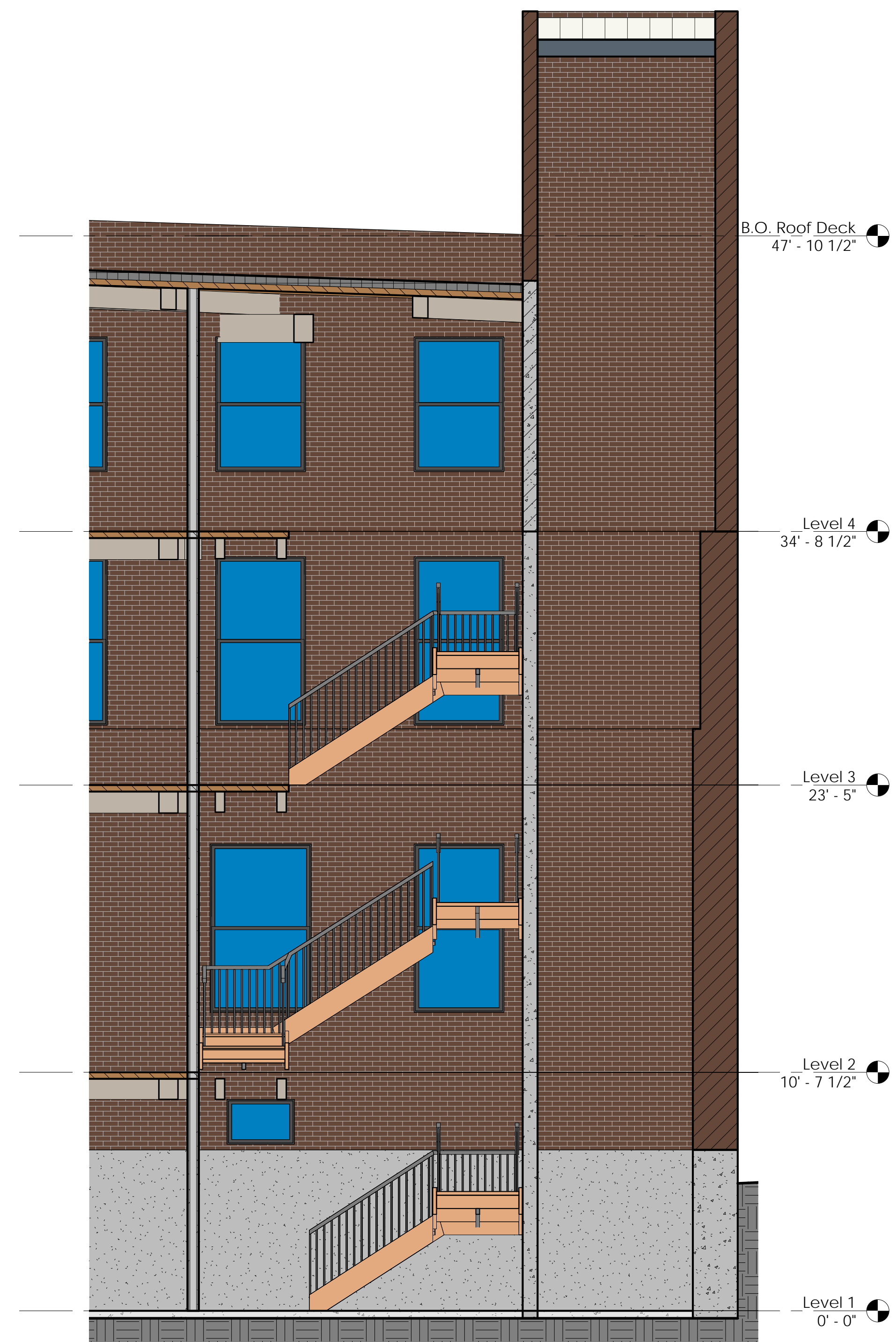
Project Number:	Project Number:
Date:	12/19/17
Drawn by:	Author
Checked by:	
A1.5	
Scale:	1/8" = 1'-0"



1 Section 1
1/8" = 1'-0"



2 Section 2
1/8" = 1'-0"



3 Section 3
1/4" = 1'-0"



MATTHEWS, LLC
SOUTH BEND, IN

These drawings and the information they contain are the property of Mathews 702 Michigan, LLC and may not be revised, reproduced, or distributed without express consent from the afore mentioned parties. (c) 2017.

702 Building
South Main Street South Bend, IN 46637
Existing Building Sections

Project Number:	Project Number:
Date:	12/11/17
Drawn by:	J.R. Wooden
Checked by:	
A2.1	
Scale:	As indicated



① West Elevation
1/8" = 1'-0"



③ East Elevation
1/8" = 1'-0"

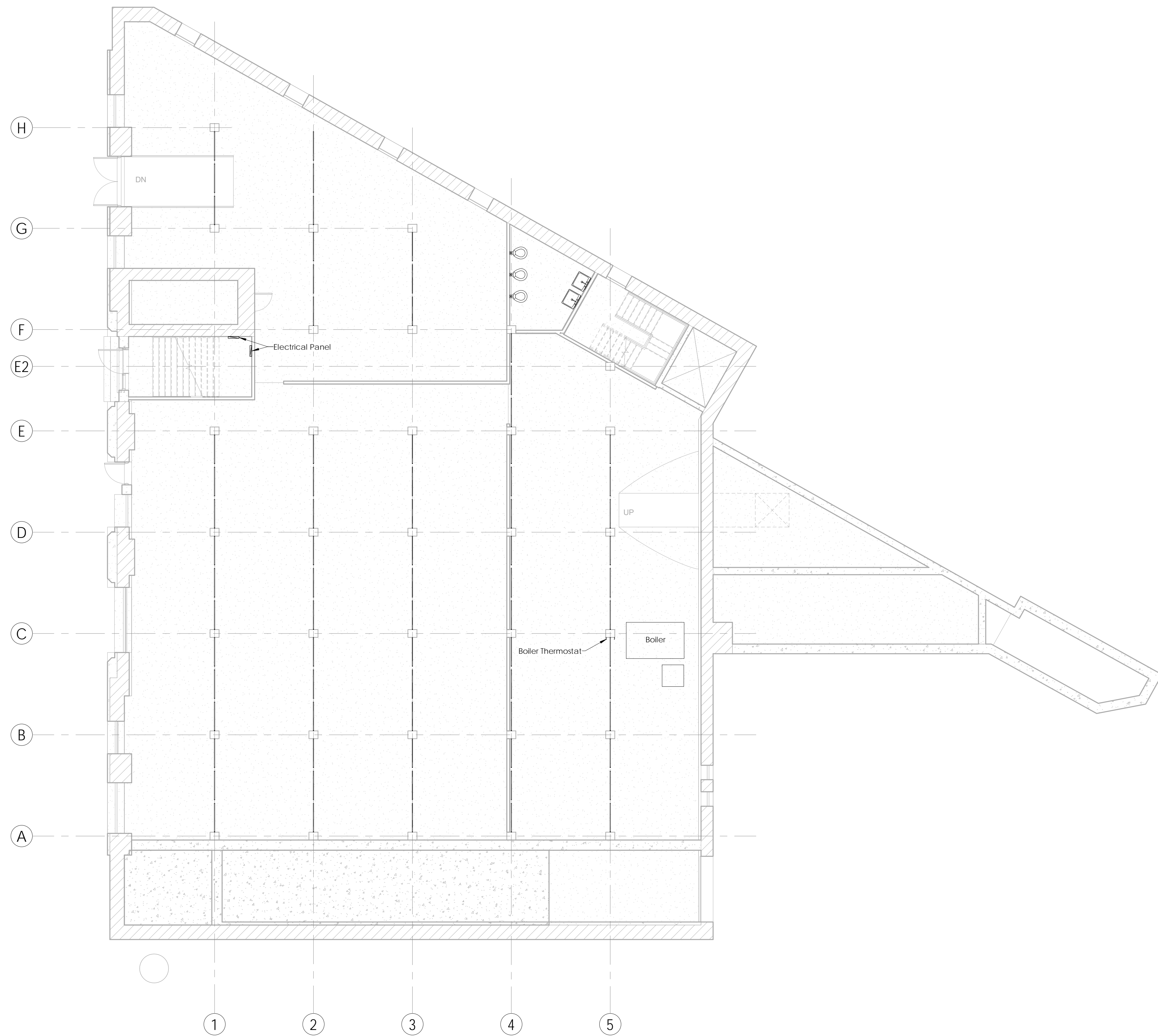


MATTHEWS, LLC
SOUTH BEND, IN

These drawings and the information they contain are the property of Mathews 702 Michigan, LLC and may not be revised, reproduced, or distributed without express consent from the afore mentioned parties. (c) 2017.

702 Building
South Main Street South Bend, IN 46637
Existing Elevations

Project Number:	Project Number:
Date:	12/13/17
Drawn by:	Author
Checked by:	
A3.2	
Scale:	1/8" = 1'-0"



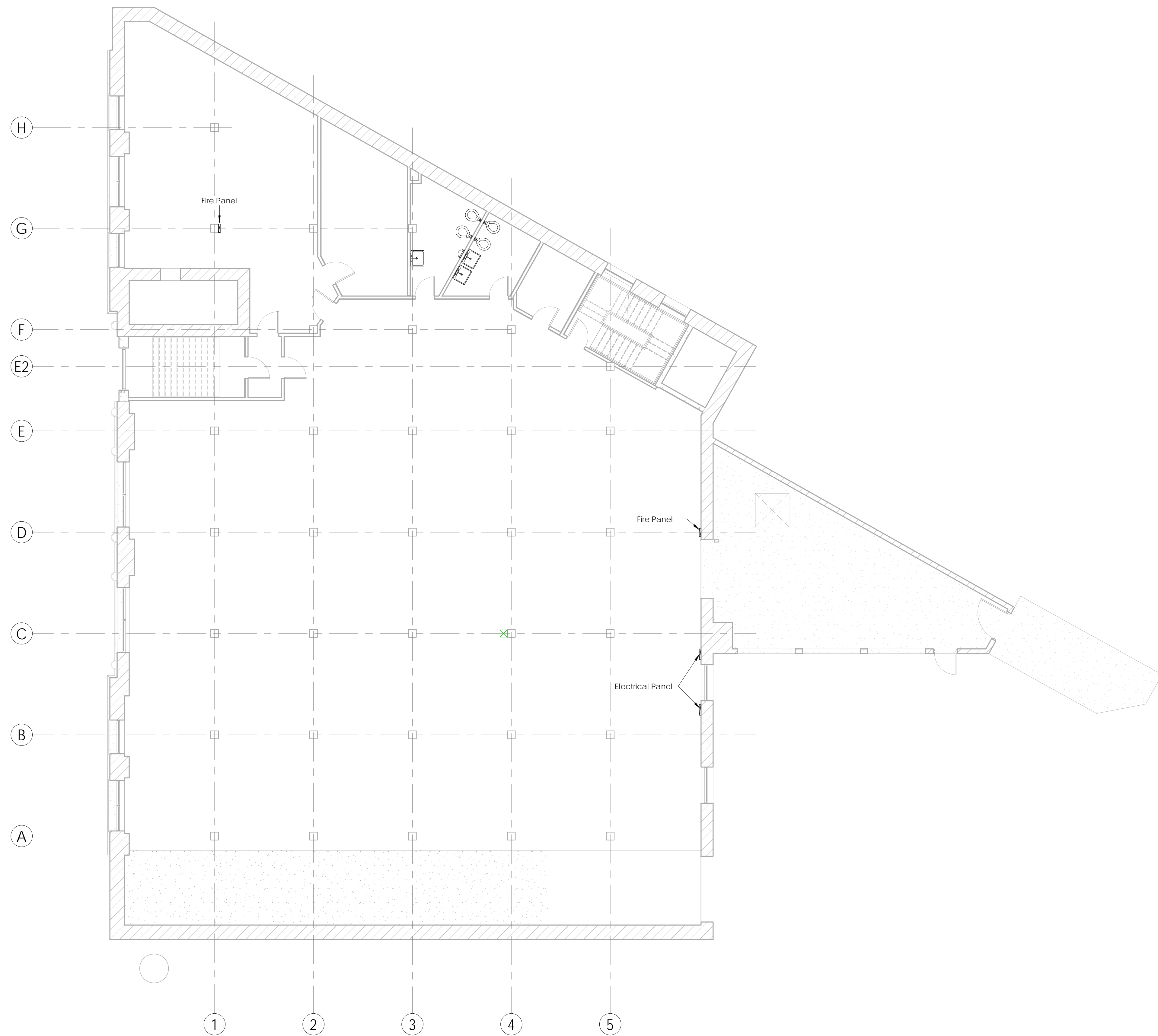
MATTHEWS, LLC
SOUTH BEND, IN

These drawings and the information they contain are the property of Matthews 702 Michigan, LLC and may not be revised, reproduced, or distributed without express consent from the afore mentioned parties. (c) 2017.

702 Building
South Main Street South Bend, IN 46637
Level 1 - Existing Elec. Plan

Project Number:	Project Number:
Date:	12/11/17
Drawn by:	J.R. Wooden
Checked by:	
E1.1	
Scale:	1/8" = 1'-0"

12/26/2017 4:35:59 PM



MATTHEWS, LLC
SOUTH BEND, IN

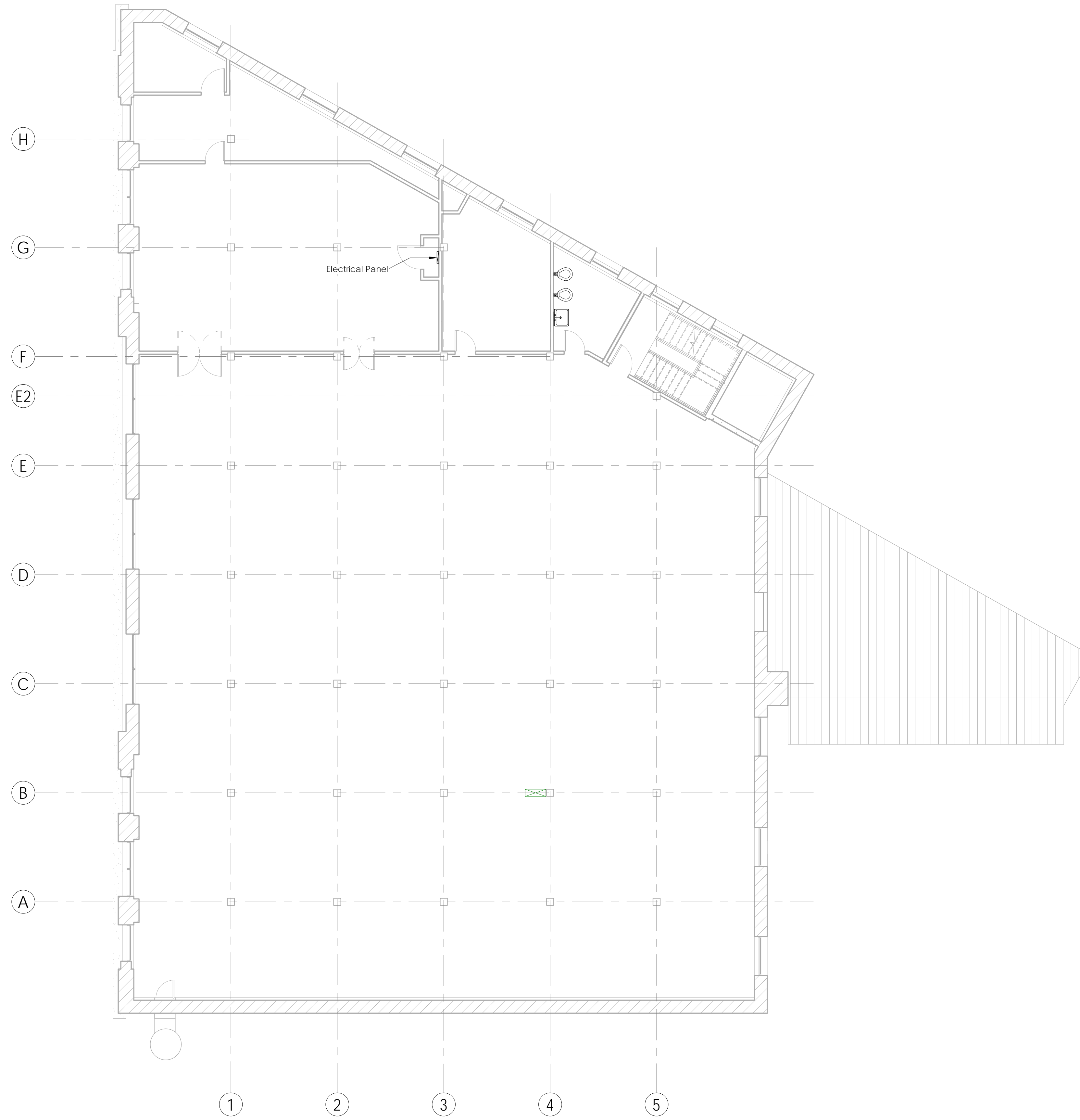
These drawings and the information they contain are the property of Mathews 702 Michigan, LLC and may not be revised, reproduced, or distributed without express consent from the afore mentioned parties. (c) 2017.

702 Building
South Main Street South Bend, IN 46637

Level 2 - Existing Elec. Plan

Project Number:	Project Number:
Date:	12/11/17
Drawn by:	J.R. Wooden
Checked by:	
E1.2	
Scale:	1/8" = 1'-0"

12/26/2017 4:36:00 PM



MATTHEWS, LLC
SOUTH BEND, IN

These drawings and the information they contain are the property of Mathews 702 Michigan, LLC and may not be revised, reproduced, or distributed without express consent from the afore mentioned parties. (c) 2017.

702 Building
South Main Street South Bend, IN 46637
Level 3 - Existing Elec. Plan

Project Number: Project Number:

Date: 12/11/17

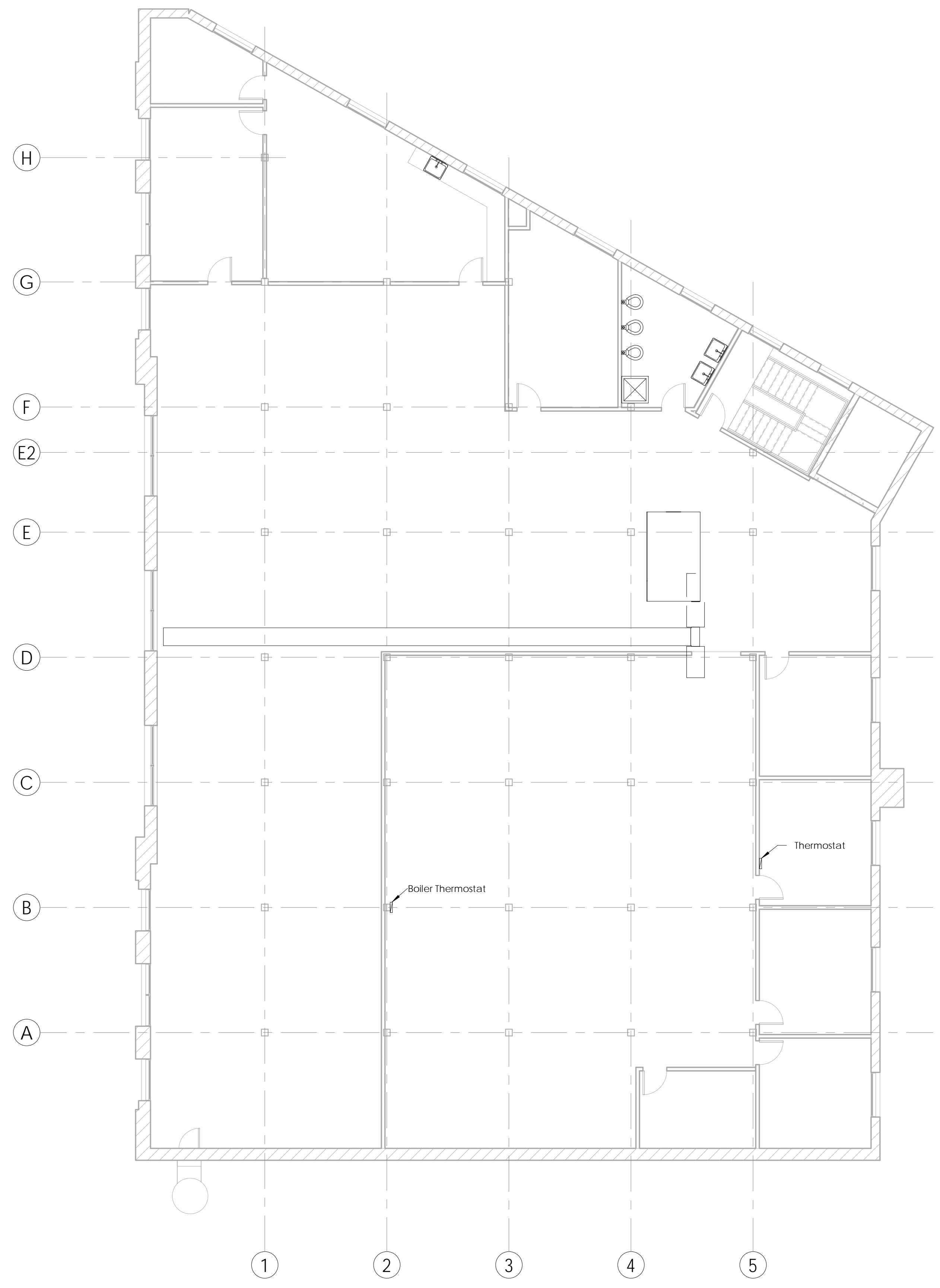
Drawn by: J.R. Wooden

Checked by:

E1.3

Scale: 1/8" = 1'-0"

12/26/2017 4:36:02 PM



MATTHEWS, LLC
SOUTH BEND, IN

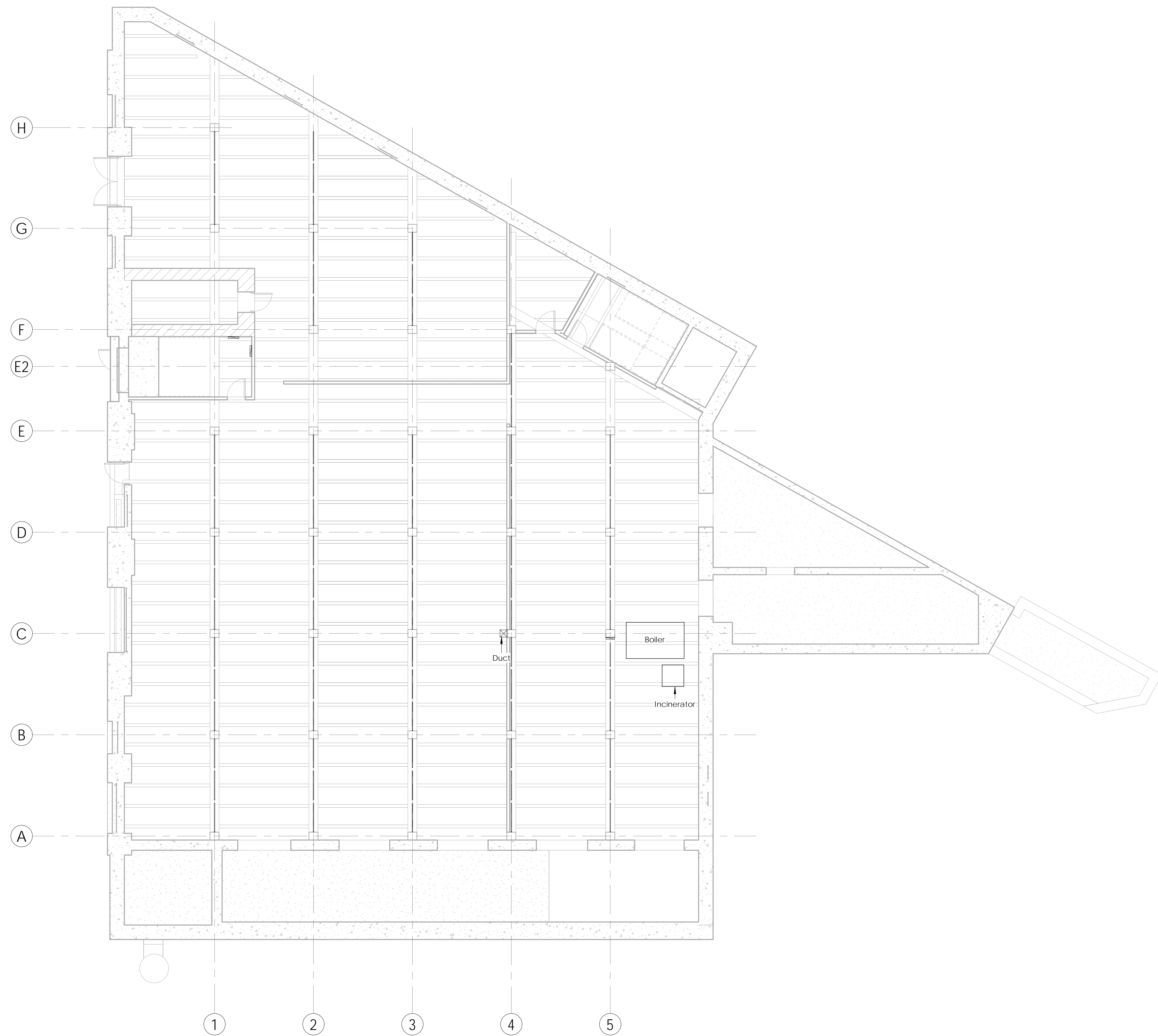
These drawings and the information they contain are the property of Matthews 702 Michigan, LLC and may not be revised, reproduced, or distributed without express consent from the afore mentioned parties. (c) 2017.

702 Building
South Main Street South Bend, IN 46637

Level 4 - Existing Elec. Plan

Project Number:	Project Number:
Date:	12/11/17
Drawn by:	J.R. Wooden
Checked by:	
E1.4	
Scale:	1/8" = 1'-0"

12/26/2017 4:36:03 PM



MATTHEWS, LLC
SOUTH BEND, IN

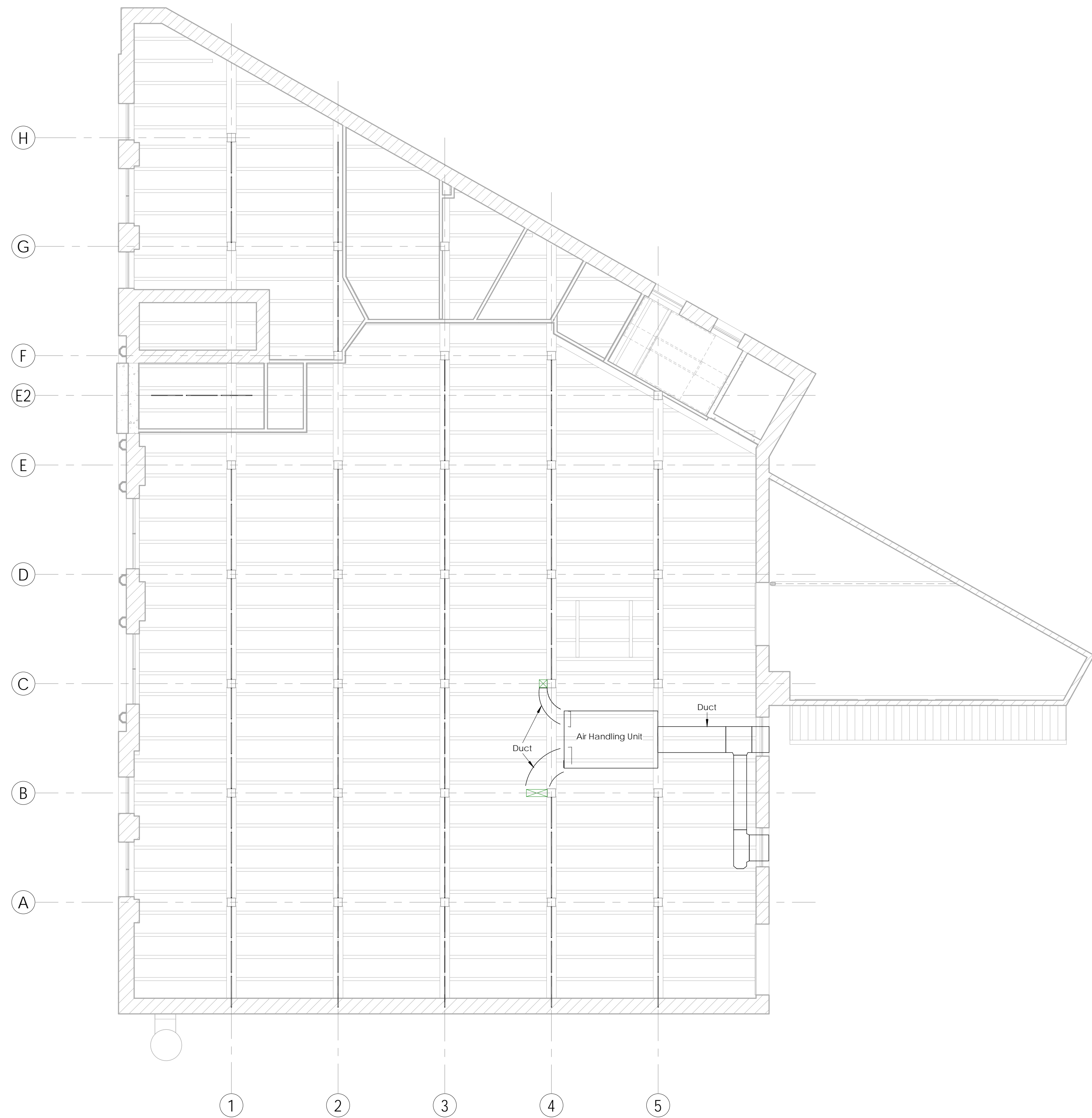
These drawings and the information they contain are the property of Mathews 702 Michigan, LLC and may not be revised, reproduced, or distributed without express consent from the afore mentioned parties. (c) 2017.

702 Building
South Main Street South Bend, IN 46637

Level 1 - Existing Mech. RCP

Project Number:	Project Number:
Date:	12/07/17
Drawn by:	J.R. Wooden
Checked by:	
M1.1	
Scale:	1/8" = 1'-0"

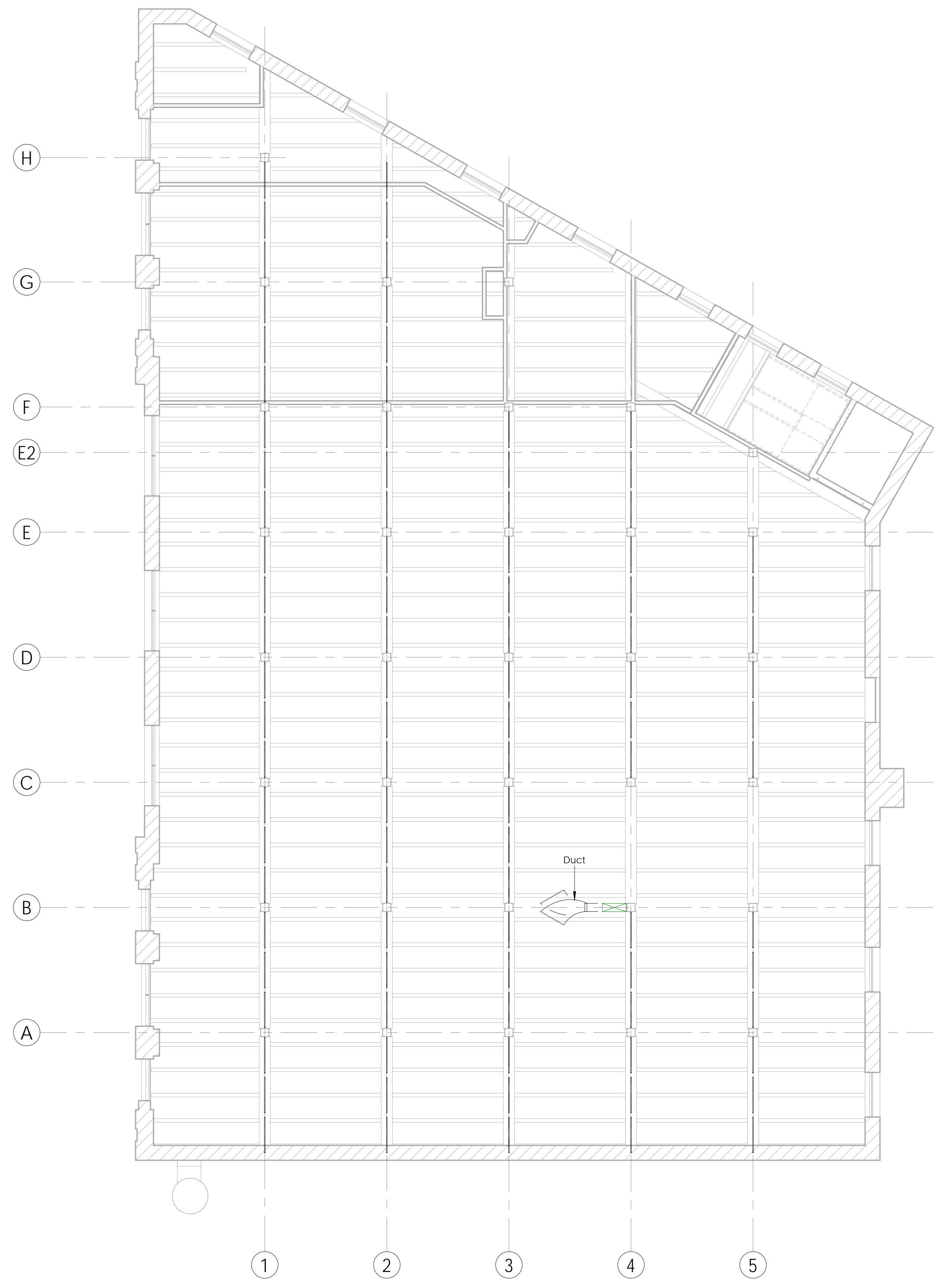
12/26/2017 4:36:04 PM



These drawings and the information they contain are the property of Matthews 702 Michigan, LLC and may not be revised, reproduced, or distributed without express consent from the afore mentioned parties. (c) 2017.

702 Building
 South Main Street South Bend, IN 46637
Level 2 - Existing Mech. RCP

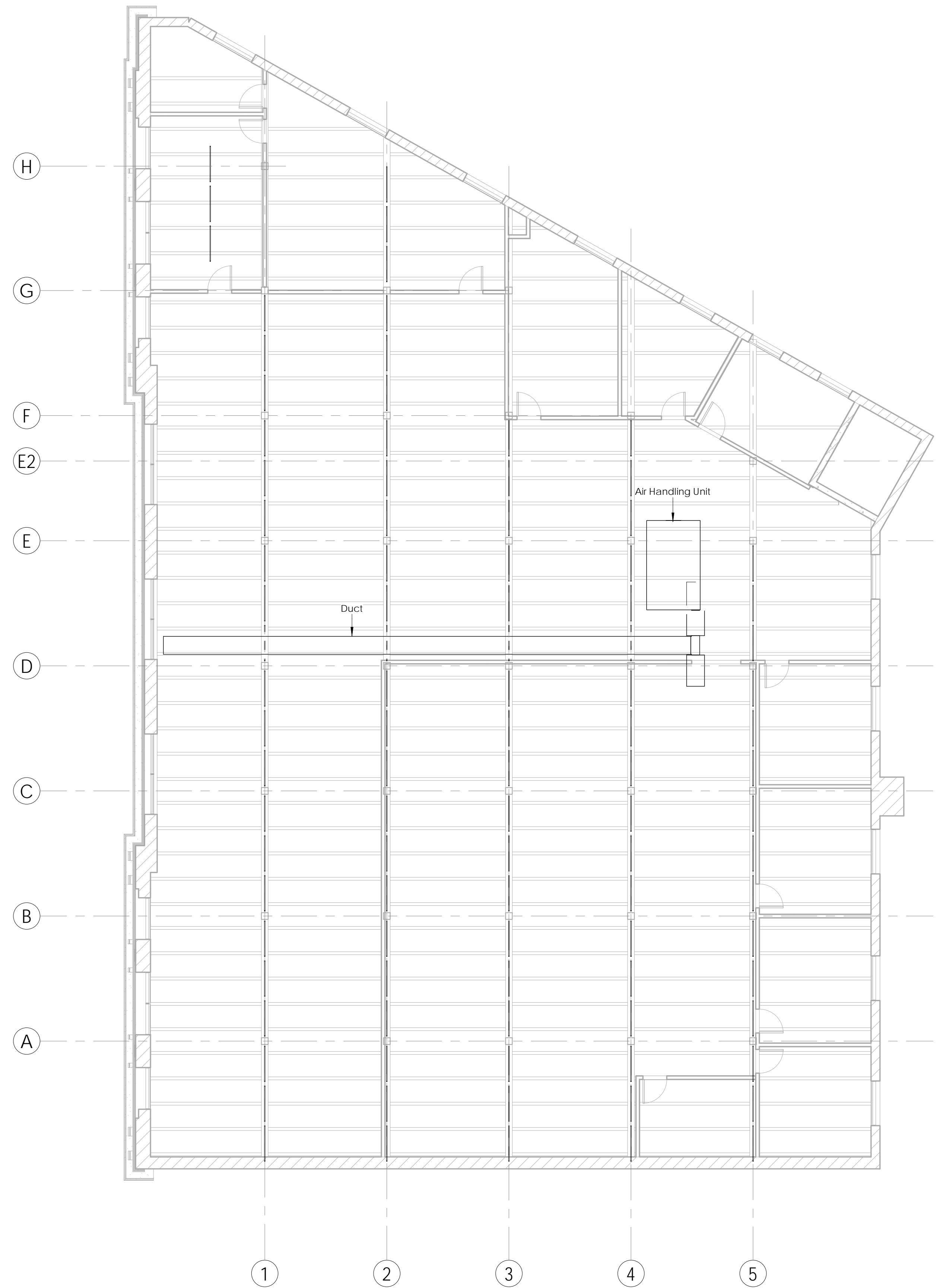
Project Number:	Project Number:
Date:	12/07/17
Drawn by:	J.R. Wooden
Checked by:	
M1.2	
Scale:	1/8" = 1'-0"



These drawings and the information they contain are the property of Matthews 702 Michigan, LLC and may not be revised, reproduced, or distributed without express consent from the afore mentioned parties. (c) 2017.

702 Building
 South Main Street South Bend, IN 46637
Level 3 - Existing Mech. RCP

Project Number:	Project Number:
Date:	12/07/17
Drawn by:	J.R. Wooden
Checked by:	
M1.3	
Scale:	1/8" = 1'-0"



MATTHEWS, LLC
SOUTH BEND, IN

These drawings and the information they contain are the property of Mathews 702 Michigan, LLC and may not be revised, reproduced, or distributed without express consent from the afore mentioned parties. (c) 2017.

702 Building
South Main Street South Bend, IN 46637
Level 4 - Existing Mech. RCP

Project Number: Project Number

Date: 12/07/17

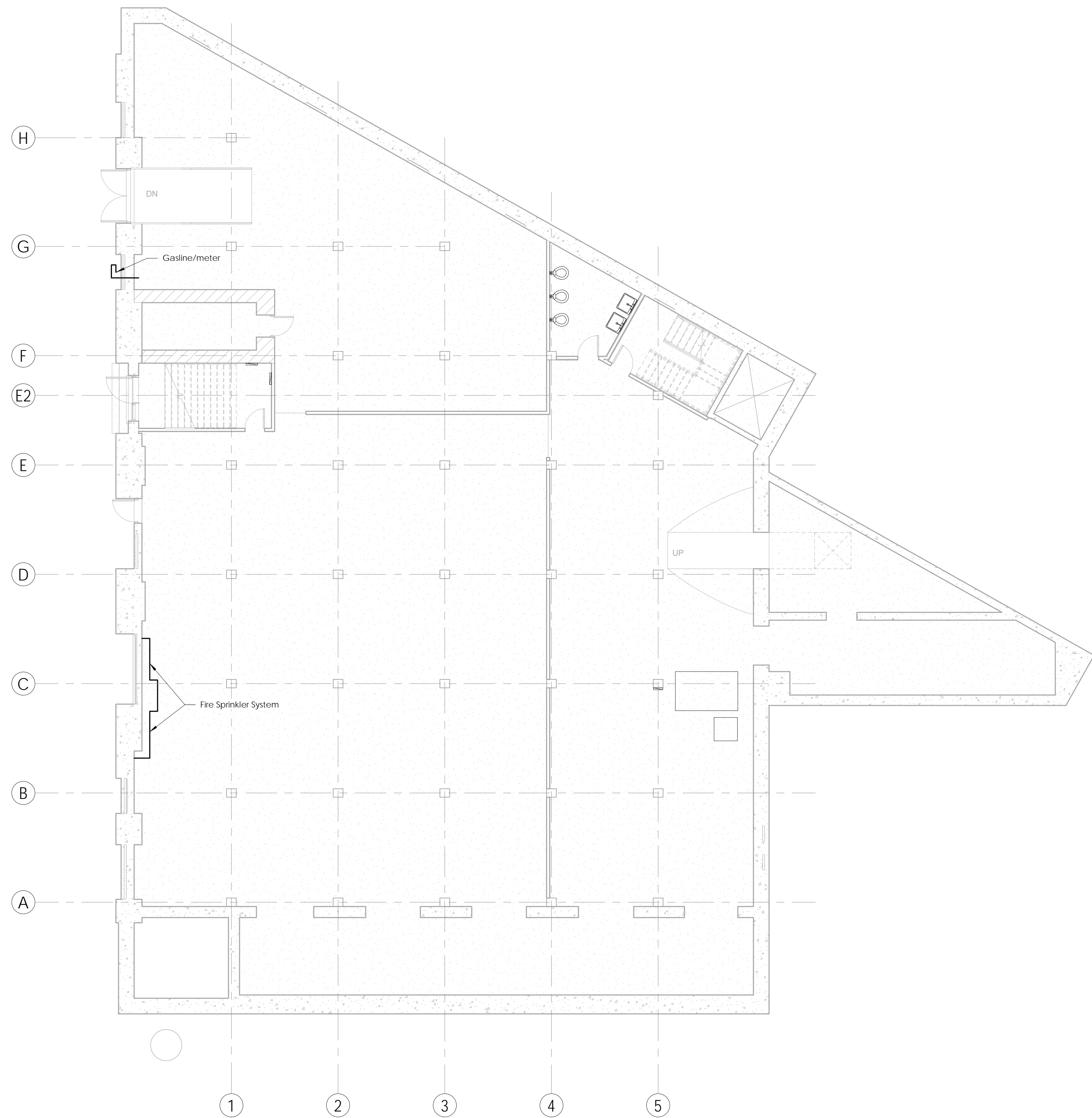
Drawn by: J.R. Wooden

Checked by:

M1.4

Scale: 1/8" = 1'-0"

12/26/2017 4:36:09 PM



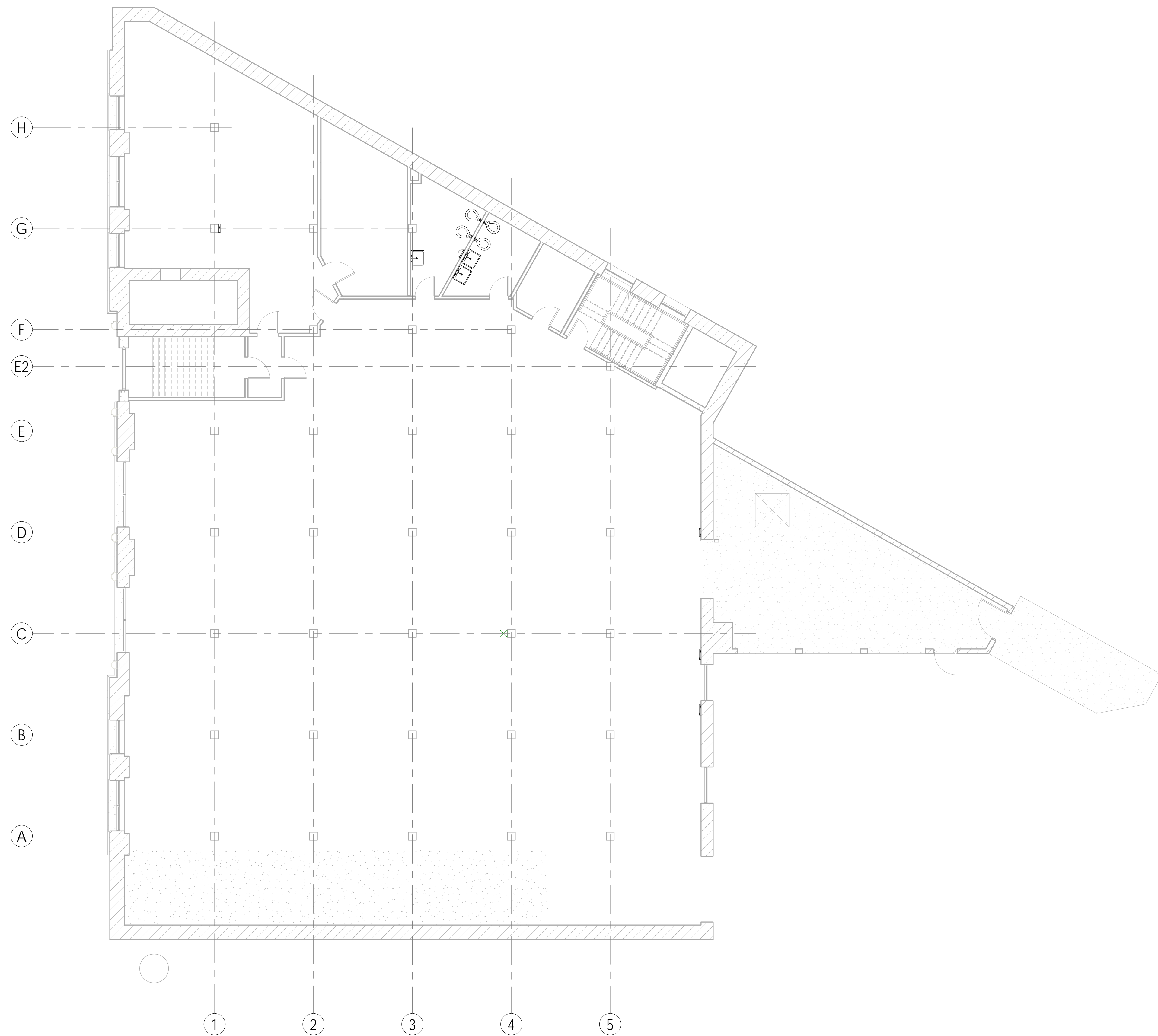
MATTHEWS, LLC
SOUTH BEND, IN

These drawings and the information they contain are the property of Matthews 702 Michigan, LLC and may not be revised, reproduced, or distributed without express consent from the afore mentioned parties. (c) 2017.

702 Building
South Main Street South Bend, IN 46637
Level 1 - Existing Plumbing Plan

Project Number:	Project Number:
Date:	12/11/17
Drawn by:	J.R. Wooden
Checked by:	
P1.1	
Scale:	1/8" = 1'-0"

12/26/2017 4:36:11 PM



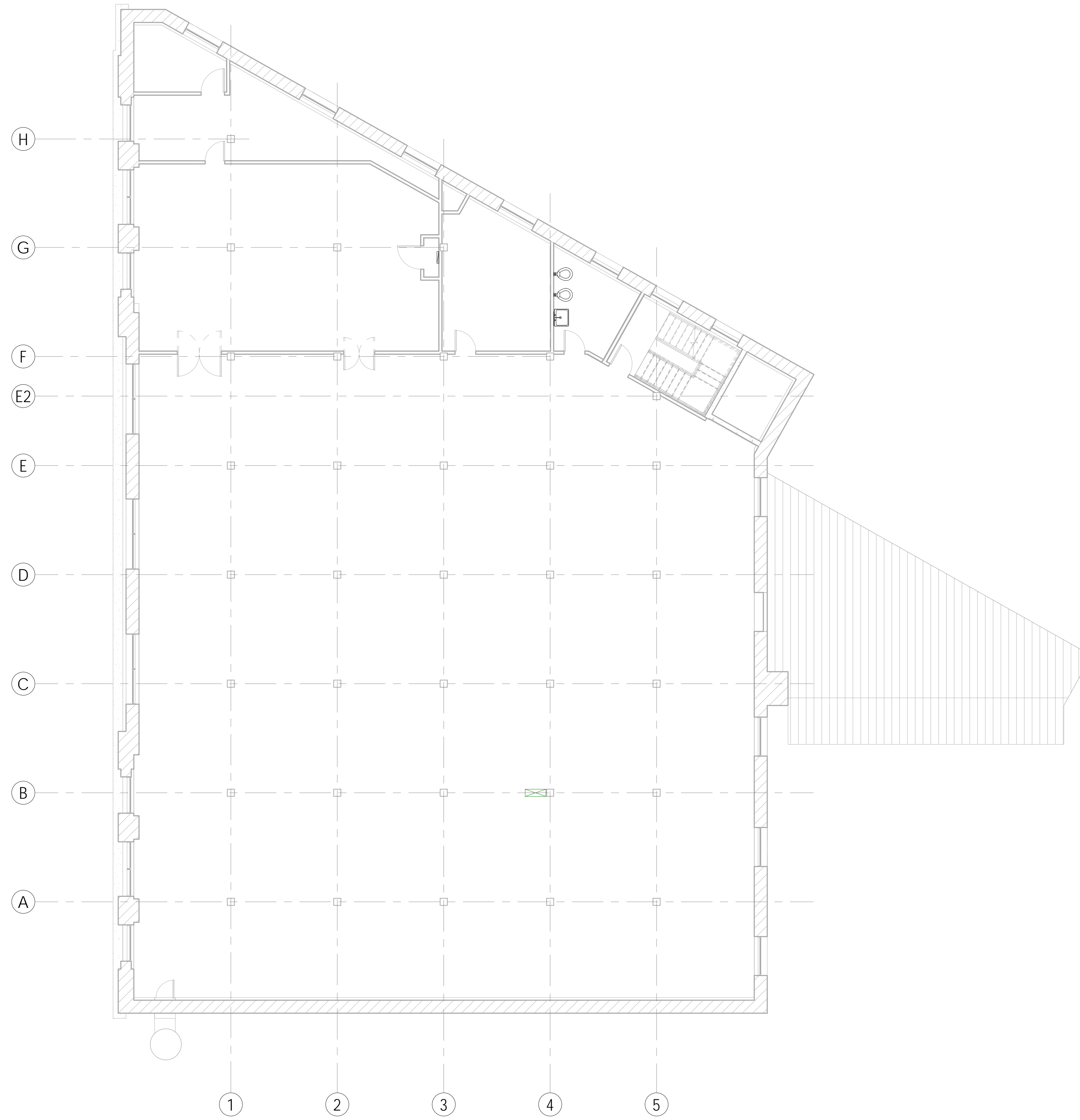
MATTHEWS, LLC
SOUTH BEND, IN

These drawings and the information they contain are the property of Matthews 702 Michigan, LLC and may not be revised, reproduced, or distributed without express consent from the afore mentioned parties. (c) 2017.

702 Building
South Main Street South Bend, IN 46637
Level 2 - Existing Plumbing Plan

Project Number:	Project Number:
Date:	12/11/17
Drawn by:	J.R. Wooden
Checked by:	
P1.2	
Scale:	1/8" = 1'-0"

12/26/2017 4:36:13 PM



MATTHEWS, LLC
SOUTH BEND, IN

These drawings and the information they contain are the property of Matthews 702 Michigan, LLC and may not be revised, reproduced, or distributed without express consent from the afore mentioned parties. (c) 2017.

702 Building
South Main Street South Bend, IN 46637
Level 3 - Existing Plumbing Plan

Project Number: Project Number

Date: 12/11/17

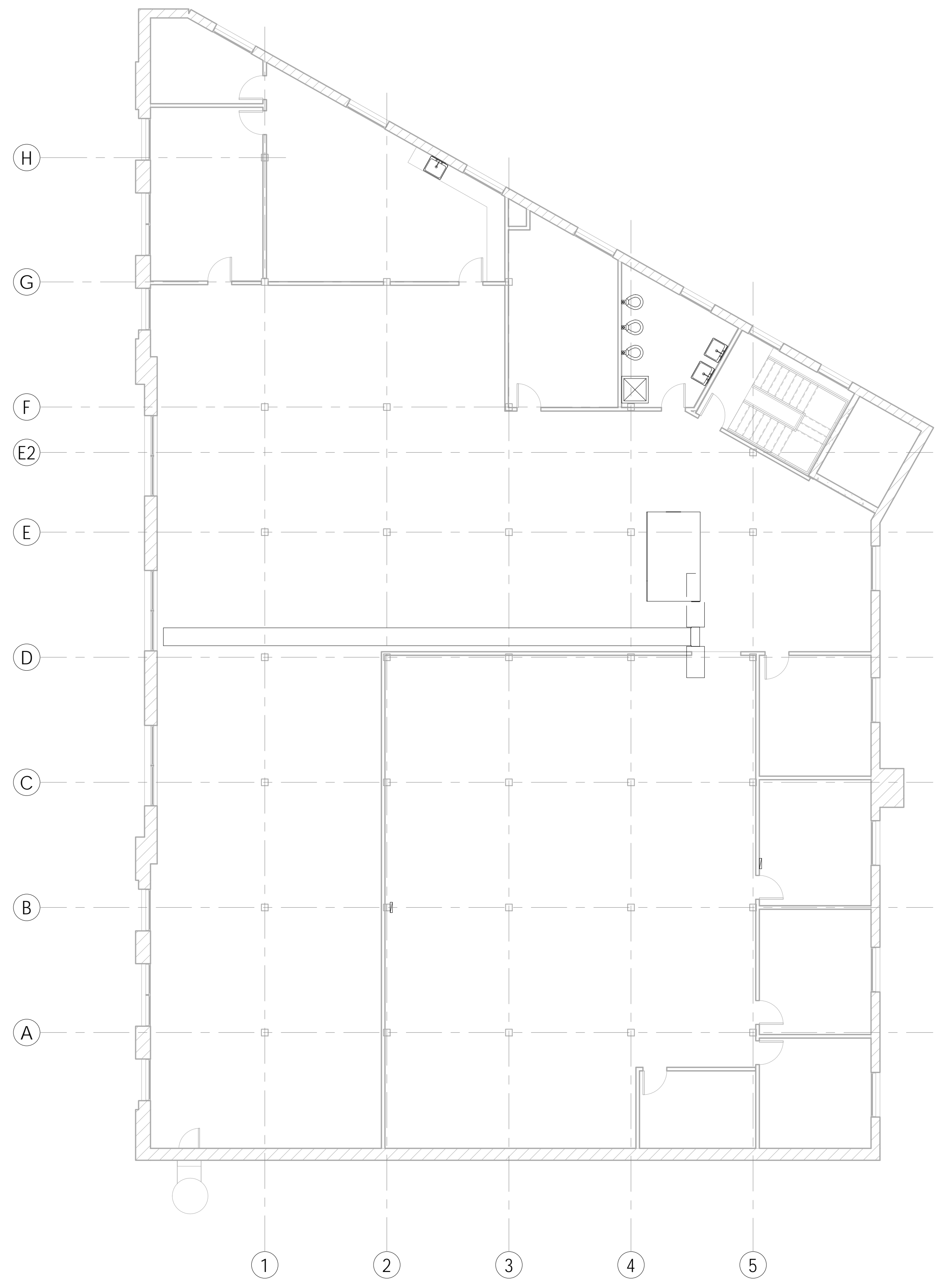
Drawn by: J.R. Wooden

Checked by:

P1.3

Scale: 1/8" = 1'-0"

12/26/2017 4:36:14 PM



MATTHEWS, LLC
SOUTH BEND, IN

These drawings and the information they contain are the property of Matthews 702 Michigan, LLC and may not be revised, reproduced, or distributed without express consent from the afore mentioned parties. (c) 2017.

702 Building
South Main Street South Bend, IN 46637

Level 4 - Existing Plumbing Plan

Project Number:	Project Number:
Date:	12/11/17
Drawn by:	J.R. Wooden
Checked by:	
P1.4	
Scale:	1/8" = 1'-0"

12/26/2017 4:36:15 PM