

FOR LEASE
INDUSTRIAL PROPERTY



273 WEYMOUTH ST

ROCKLAND, MA 02370

For More Information

BILL KINGDON, SIOR

603.560.2710

bill@ellisrealtyadvisors.com



80 WASHINGTON STREET | NORWELL, MA 02061 | 781.919.0800 | ELLISREALTYADVISORS.COM

273 WEYMOUTH ST



PROPERTY DESCRIPTION

Available for lease, 2800 square feet of industrial space ideal for warehouse/distribution or manufacturing use. Space features one loading dock and 14-18' clear heights.

PROPERTY HIGHLIGHTS

- Prime location on Weymouth St in Rockland, MA, close to Route 3 and the entrance to Union Point
- Versatile floor plan with minimal columns
- 14' clear height at the loading dock pitching up to 18' in the rear
- Dedicated parking
- Easy access to major transportation routes
- Well-maintained and managed property

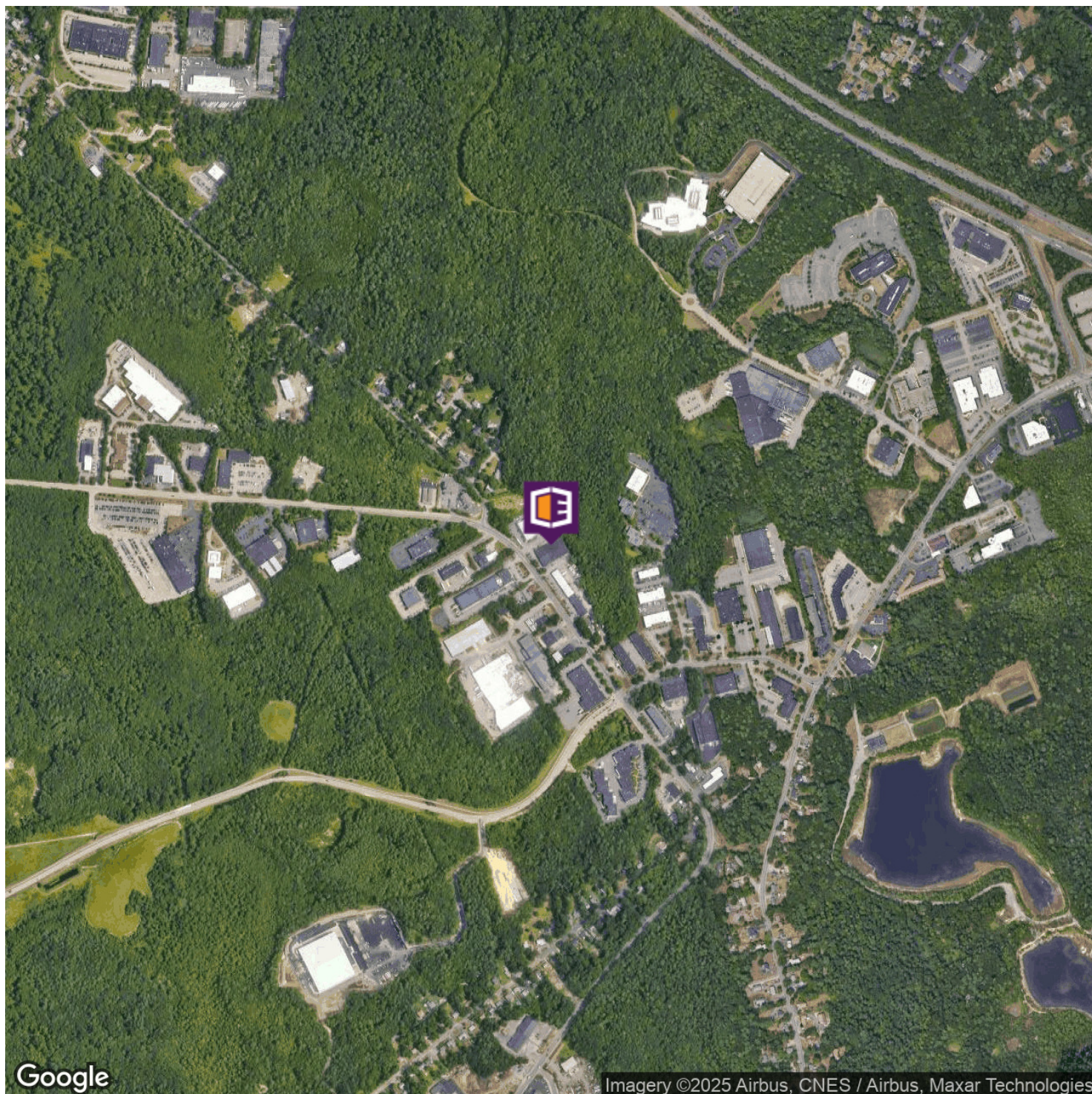
OFFERING SUMMARY

Lease Rate:	Negotiable
Number of Units:	1
Available SF:	2,800 SF
Lot Size:	74,385 SF
Building Size:	25,920 SF

DEMOGRAPHICS	0.3 MILES	0.5 MILES	1 MILE
Total Households	15	67	799
Total Population	41	174	2,113
Average HH Income	\$159,226	\$162,130	\$168,719

AERIAL MAP

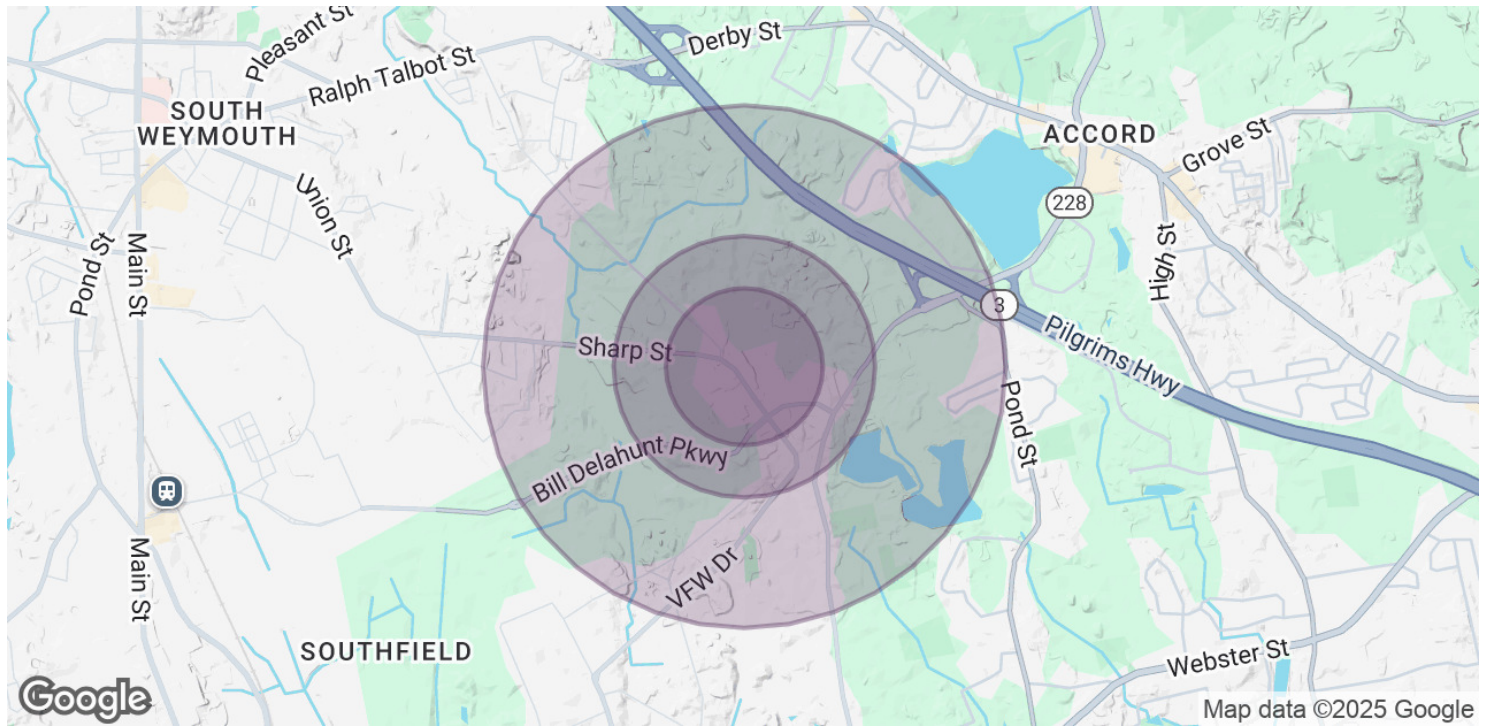
273 WEYMOUTH ST



BILL KINGDON, SIOR

603.560.2710
bill@ellisrealtyadvisors.com

273 WEYMOUTH ST



POPULATION	0.3 MILES	0.5 MILES	1 MILE
Total Population	41	174	2,113
Average Age	43	44	45
Average Age (Male)	42	43	43
Average Age (Female)	44	45	46

HOUSEHOLDS & INCOME	0.3 MILES	0.5 MILES	1 MILE
Total Households	15	67	799
# of Persons per HH	2.7	2.6	2.6
Average HH Income	\$159,226	\$162,130	\$168,719
Average House Value	\$584,074	\$605,055	\$620,887

Demographics data derived from AlphaMap

ADDITIONAL PHOTOS

273 WEYMOUTH ST

