

# 5306 PALMERO COURT

BUFORD, GA  
30518

**For Lease**  
**2,000+/- SF Suites**

**DOUG BURGGRAAF**

*Vice President*

770.601.3620

[dburggraaf@kingindustrial.com](mailto:dburggraaf@kingindustrial.com)

**CLYDE PURMORT**

*Advisor*

941.323.0763

[cpurmort@kingindustrial.com](mailto:cpurmort@kingindustrial.com)

**King** Industrial  
Realty, Inc.

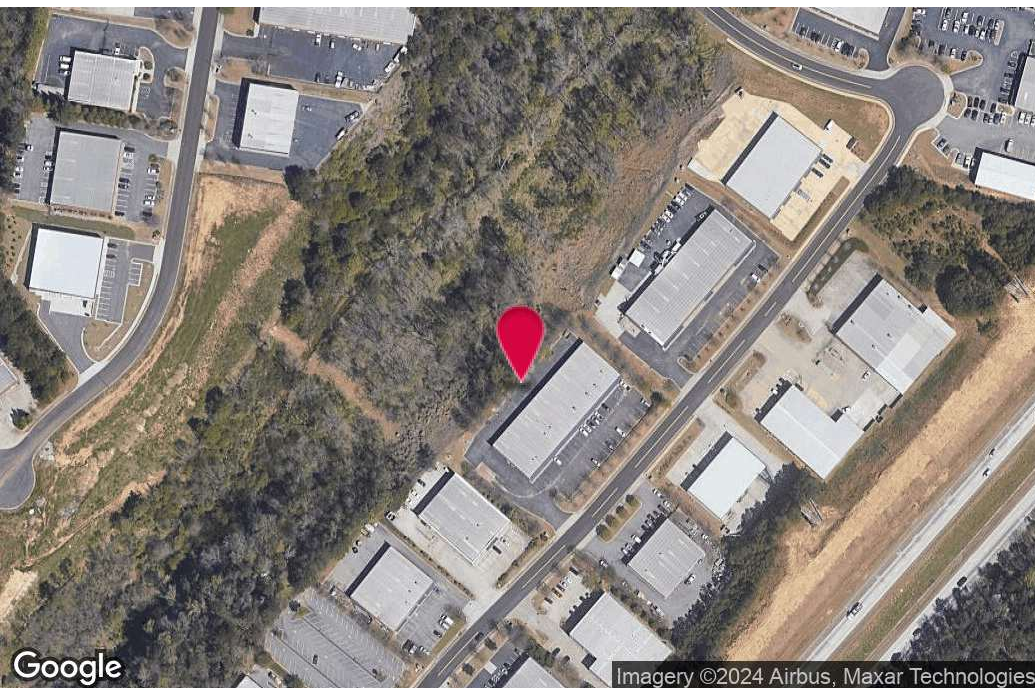
Industrial • Commercial • Investment

404.942.2000 | [kingindustrial.com](http://kingindustrial.com)





FOR LEASE  
2,000+/-SF  
SUITES



### PROPERTY HIGHLIGHTS

- Suite E: 2,000+/-SF; 800+/-SF Office; 1 Drive In; 1 Shared Dock Door
- Suite H: 2,000+/-SF; 450+/-SF Office, 1 Drive In Doors; 1 Dock High Door
- 16' Clear Ceiling
- Zoned M-1

### OFFERING SUMMARY

Available SF:	4,000 SF
Building Size:	18,000 SF

#### DOUG BURGGRAAF

Vice President

770.601.3620

[dburggraaf@kingindustrial.com](mailto:dburggraaf@kingindustrial.com)

#### CLYDE PURMORT

Advisor

941.323.0763

[cpurmort@kingindustrial.com](mailto:cpurmort@kingindustrial.com)

Every effort has been made to provide accurate information, but no liability is assumed for errors or omissions.

**king** Industrial  
Realty, Inc.

**CORFAC**  
INTERNATIONAL

Industrial • Commercial • Investment  
404.942.2000 | [kingindustrial.com](http://kingindustrial.com)



# ADDITIONAL PHOTOS



## DOUG BURGGRAAF

Vice President

770.601.3620

[dburggraaf@kingindustrial.com](mailto:dburggraaf@kingindustrial.com)

*Every effort has been made to provide accurate information, but no liability is assumed for errors or omissions.*

## CLYDE PURMORT

Advisor

941.323.0763

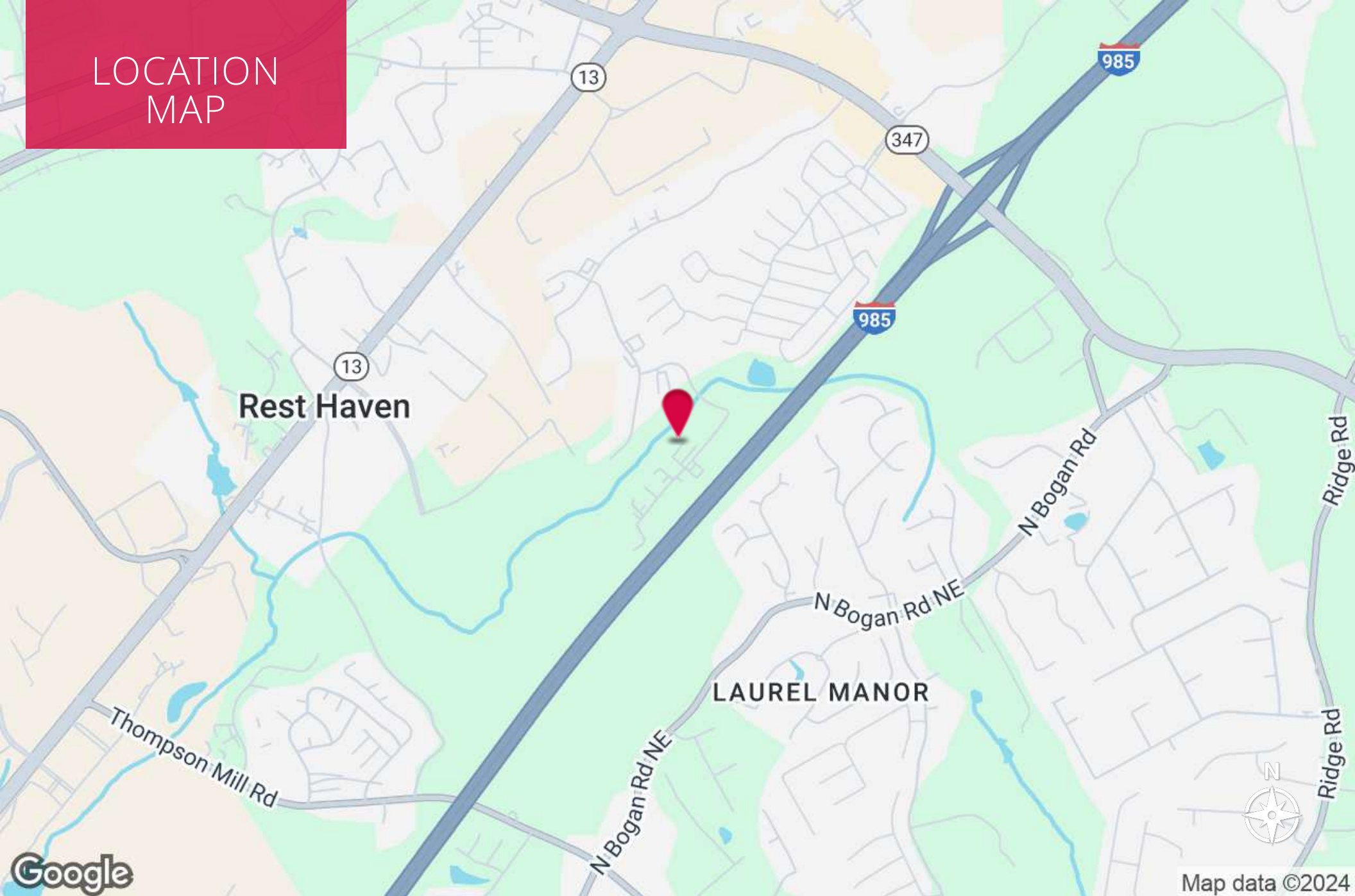
[cpurmort@kingindustrial.com](mailto:cpurmort@kingindustrial.com)

**King** Industrial Realty, Inc. **CORFAC** INTERNATIONAL

Industrial • Commercial • Investment  
404.942.2000 | [kingindustrial.com](http://kingindustrial.com)



# LOCATION MAP



## DOUG BURGGRAAF

Vice President

770.601.3620

[dburggraaf@kingindustrial.com](mailto:dburggraaf@kingindustrial.com)

*Every effort has been made to provide accurate information, but no liability is assumed for errors or omissions.*

## CLYDE PURMORT

Advisor

941.323.0763

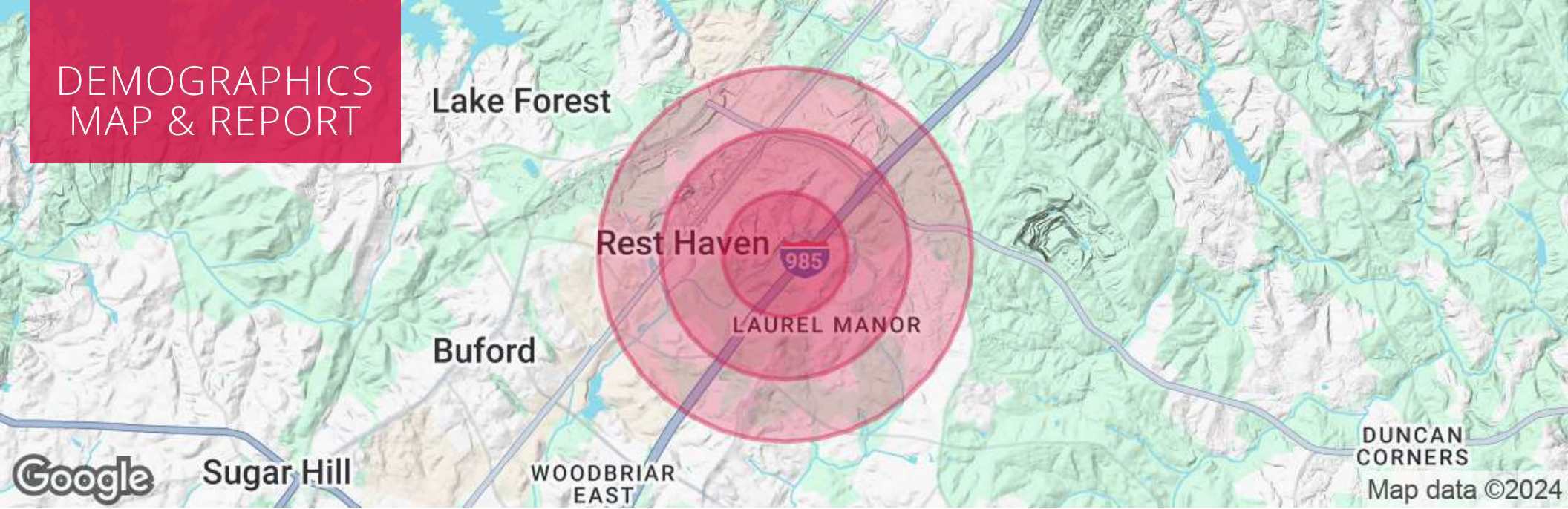
[cpurmort@kingindustrial.com](mailto:cpurmort@kingindustrial.com)

**King** Industrial  
Realty, Inc.

**CORFAC**  
INTERNATIONAL

Industrial • Commercial • Investment  
404.942.2000 | [kingindustrial.com](http://kingindustrial.com)

# DEMOGRAPHICS MAP & REPORT



## POPULATION

	0.5 MILES	1 MILE	1.5 MILES
Total Population	1,165	4,778	8,579
Average Age	36	36	37
Average Age (Male)	34	35	36
Average Age (Female)	37	37	38

## HOUSEHOLDS & INCOME

	0.5 MILES	1 MILE	1.5 MILES
Total Households	368	1,514	2,706
# of Persons per HH	3.2	3.2	3.2
Average HH Income	\$90,647	\$99,850	\$108,927
Average House Value	\$367,441	\$394,883	\$416,221

### DOUG BURGGAUF

Vice President

770.601.3620

dburggraaf@kingindustrial.com

### CLYDE PURMORT

Advisor

941.323.0763

cpurmort@kingindustrial.com

Every effort has been made to provide accurate information, but no liability is assumed for errors or omissions.



Industrial • Commercial • Investment  
404.942.2000 | kingindustrial.com



EXCLUSIVELY LISTED BY:

**DOUG BURGGRAAF**

*Vice President*

[dburggraaf@kingindustrial.com](mailto:dburggraaf@kingindustrial.com)

770.601.3620

**CLYDE PURMORT**

*Advisor*

[cpurmort@kingindustrial.com](mailto:cpurmort@kingindustrial.com)

941.323.0763

**KING** *Industrial  
Realty, Inc.*

Industrial • Commercial • Investment

404.942.2000 | [kingindustrial.com](http://kingindustrial.com)