



**Investment  
Properties  
Corporation**



**F O R L E A S E**

# TARPON BAY PLAZA

📍 Located off Exit 111 on I-75 and Immokalee Rd

2405-2415 Tarpon Bay Blvd | Naples, FL 34119



Retail space available at one of the busiest shopping centers in Naples with approximately 3 million visits per year! Join Target, World Market, PetSmart, and other top retailers at Tarpon Bay Plaza.



**CONTACT 📞 (239) 261-3400**

**John Cheffy, ext. 182, [john@ipcnaples.com](mailto:john@ipcnaples.com)  
Tara Stokes, ext. 176, [tara@ipcnaples.com](mailto:tara@ipcnaples.com)**

Investment Properties Corporation of Naples  
3838 Tamiami Trail North Suite 402  
Naples Florida 34103-3586

Tel: 239-261-3400 Fax: 249-261-7579 [www.ipcnaples.com](http://www.ipcnaples.com)

*Licensed Real Estate Broker*

The statement and figures presented herein, while not guaranteed, are secured from sources we believe authoritative. Subject to prior sale, lease, withdrawal and price change without notice.



# TARPON BAY PLAZA

2405-2415 Tarpon Bay Blvd | Naples, FL 34119

## LEASE INFORMATION

SUITE	SF	PSF/YR	EST. 2024 CAM	AVAILABILITY
203	1,610 SF	Call For Details	\$7.77	IMMEDIATELY



Investment Properties Corporation of Naples  
 3838 Tamiami Trail North Suite 402  
 Naples Florida 34103-3586  
 Tel: 239-261-3400 Fax: 249-261-7579 www.ipcnaples.com

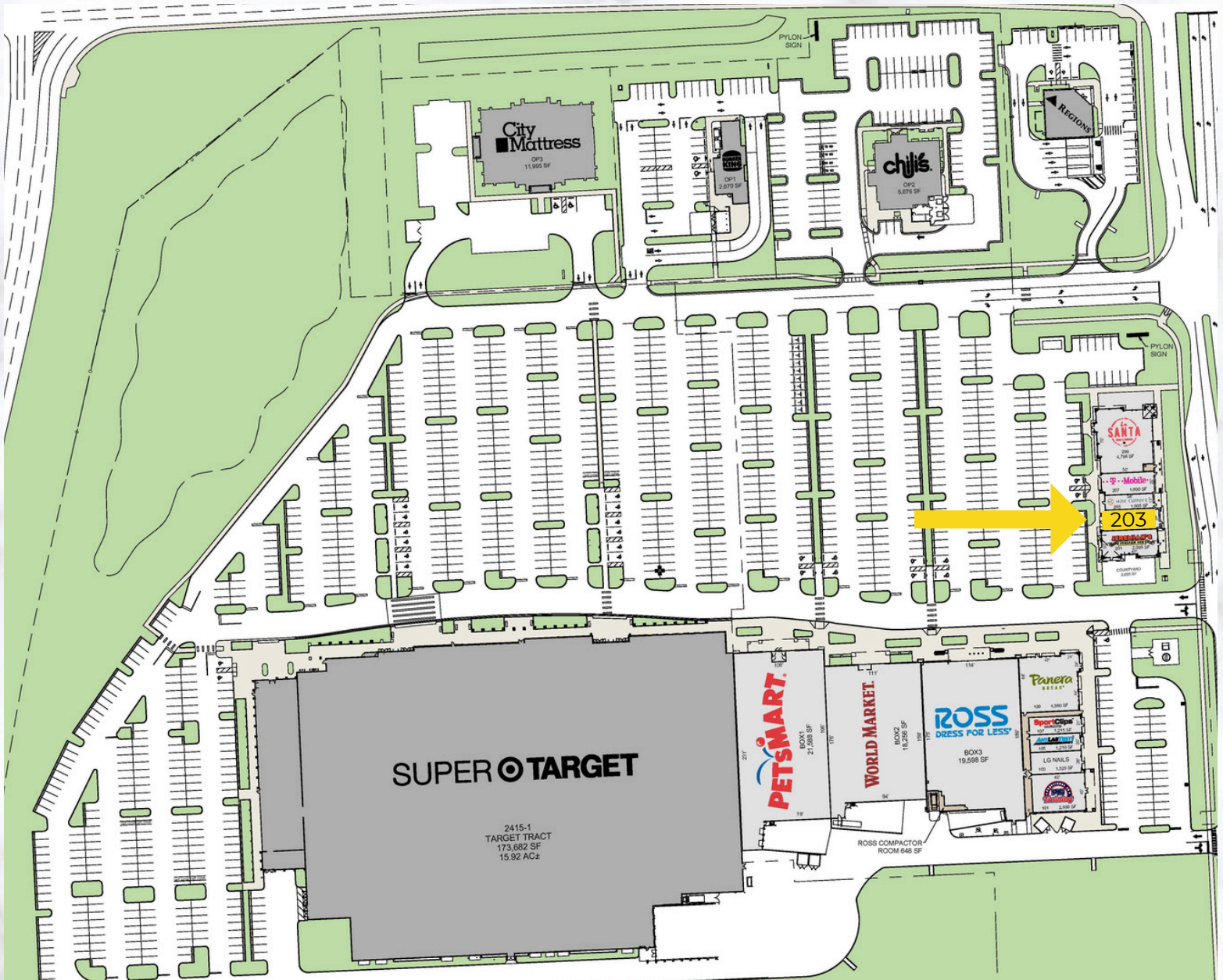
*Licensed Real Estate Broker*

The statement and figures presented herein, while not guaranteed, are secured from sources we believe authoritative. Subject to prior sale, lease, withdrawal and price change without notice.



## TENANT ROSTER:

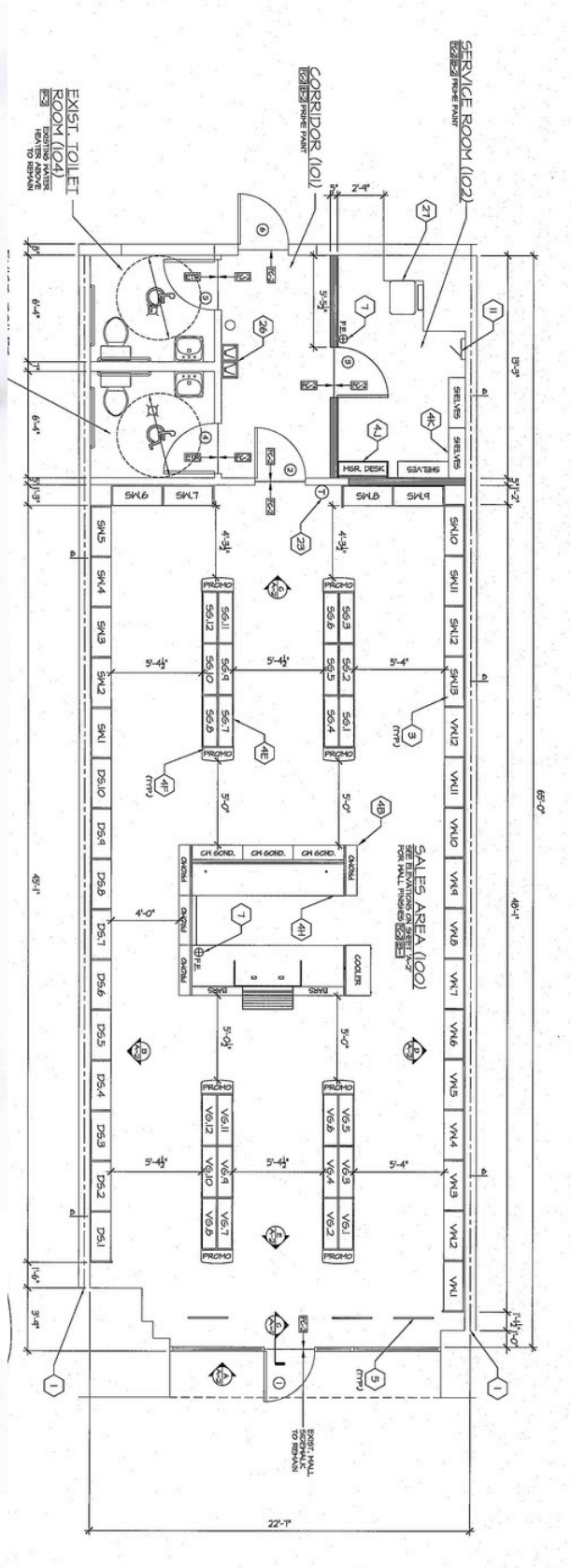
- #101: Back Nine 2,800 SF
- #103: LG Nails 1,528 SF
- #105: AnyLabTest 1,210 SF
- #107: Sports Clips 1,215 SF
- #109: Panera Bread 4,560 SF
- #201: Jeremiah's 2,098 SF
- #203: AVAILABLE 1,610 SF**
- #205: Hair Cuttery 1,005 SF
- #207: T-Mobile 1,600 SF
- #209: Kandela Tacos & Tequila 4,796 SF
- 2415-1: Target 173,682 SF
- Box1: Petsmart 21,588 SF
- Box 2: World Market 18,256 SF
- Box 3: Ross Dress For Less 19,598 SF
- OP1: Burger King 2,870 SF
- OP2: Chilis 5,876 SF
- OP3: City Mattress 11,995 SF





## UNIT #203

1,610 SF





# TARPON BAY PLAZA

2405-2415 Tarpon Bay Blvd | Naples, FL 34119



	<u>1 MILE</u>	<u>3 MILES</u>	<u>5 MILES</u>
POPULATION	5,028	55,531	128,418
AVG. INCOME	\$127,302	\$140,221	\$141,900
HOUSING UNITS	2,525	24,538	58,362

*\*2023 Demographic search\**

click here!



**CONTACT** **(239) 261-3400**

**Tara Stokes, ext. 176, tara@ipcnaples.com**  
**John Cheffy, ext. 182, john@ipcnaples.com**