

FOR LEASE

\$16.00 SF/YR
NNN \$3.85 PSF

Unit 103 - 3,600 SF



MK BUSINESS PARK

2225 N Molter Rd

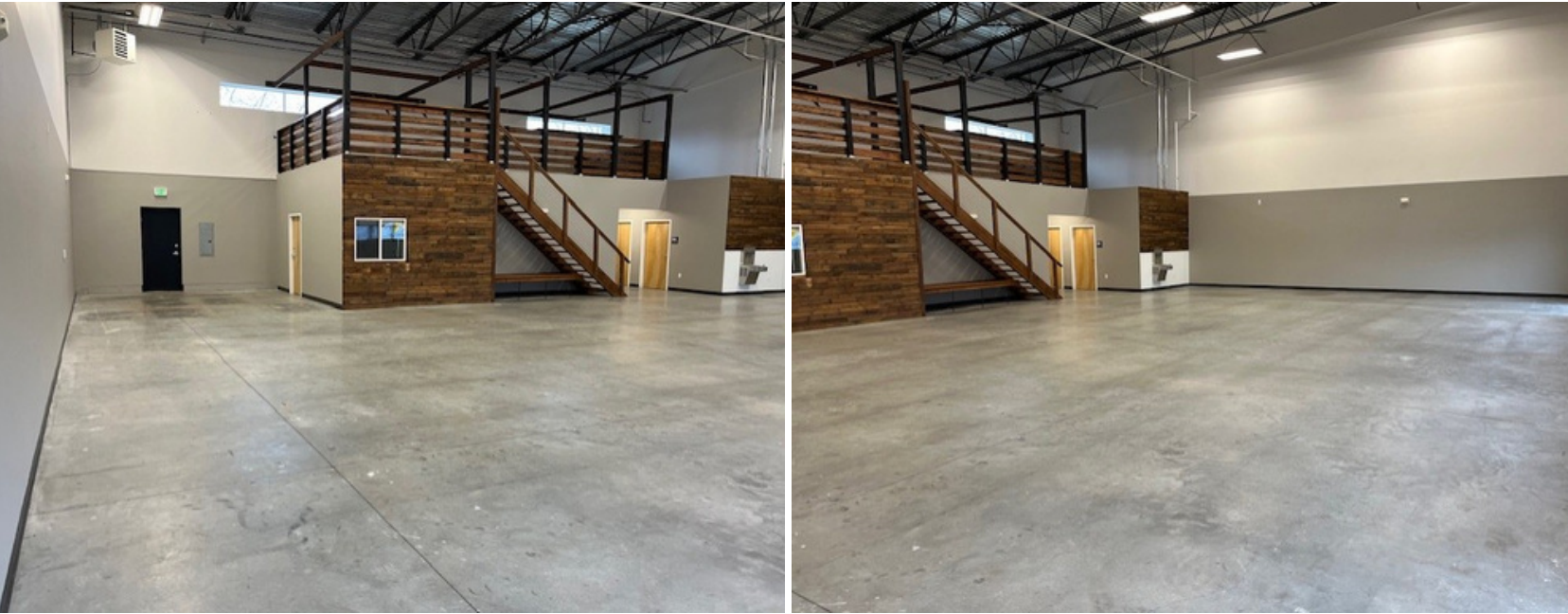
Liberty Lake, WA 99019

Exclusively listed by:

Bob Spooner
Senior Commercial and Leasing Manager
509.344.4903 | bob.spooner@g-b.com



Available Space – 2225 N Molter Rd



SPACE	RATE	SIZE	AVAILABLE
-------	------	------	-----------

UNIT 103	\$16.00 SF/YR NNN	3,600 SF	NOW
----------	-------------------	----------	-----

Bonus Loft Space at No Additional Cost

SPACE	RATE
-------	------

UNIT 103	456 SF
----------	--------

Bob Spooner
Senior Commercial and Leasing Manager
509.344.4903 | bob.spooner@g-b.com



MK Business Park



Overhead door dimensions: 13' wide x 14' tall

Ceiling height to trusses: 23' front sloping to 20' rear

Highlights



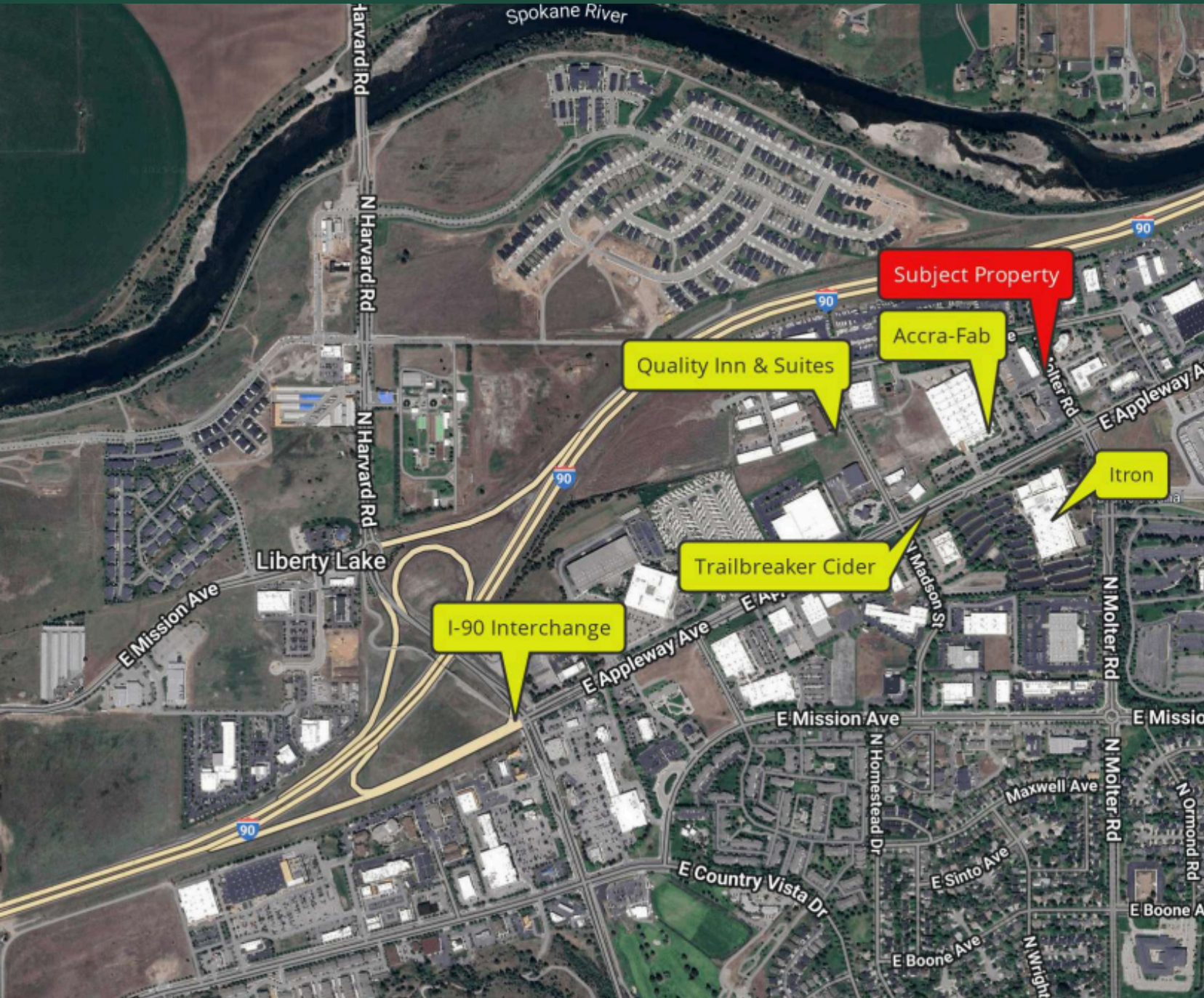
Zoned Light Industrial allowing for a wide variety of uses. <https://shorturl.at/b20Gp>



All units include built out restrooms with showers, office, lofts, and warehouse space

Bob Spooner
Senior Commercial and Leasing Manager
509.344.4903 | bob.spooner@g-b.com





AERIAL MAP

General Warranty Disclaimer: G&B makes no warranties, representations, or guarantees as to Seller/Owner's supplied information or the Property itself. G&B disclaims all warranties (express and implied) as to the Property and Seller/Owner's statements/information about the Property. Buyer/Lessee shall not rely on Property information supplied by Seller/Owner or G&B. Buyer/Lessee shall conduct its own due diligence to verify any information and the Property's suitability for specific or general purposes. Copyright information G&B respects the intellectual property of others and its Digital Millennium Copyright Act.

Bob Spooner
Senior Commercial and Leasing Manager
509.344.4903 | bob.spooner@g-b.com

