



## 1070 Tunnel Road, Building #4

Asheville, North Carolina 28805

### Property Highlights

- Two separately demised office suites w/ private entrances.
- Suitable for owner-user, investor, or hybrid buyer.
- Easy Access off Tunnel Road w/ Tunnel Road Signage.
- Ample on-site parking.

### Property Overview

This unique offering consists of a 1,584 SF office condominium comprised of two separately demised suites, each with its own dedicated exterior entrance. Both suites are delivered vacant, providing immediate flexibility for an owner-occupant, investor, or hybrid buyer seeking partial occupancy with supplemental rental income. The layout supports a wide range of professional office users. Great access and visibility via Tunnel Road and ample parking on site.

### Offering Summary

<b>Sale Price:</b>	\$519,000
<b>Building Size:</b>	1,584 SF
<b>Use:</b>	Office Condo
<b>Suite 1 Occupancy:</b>	Vacant Delivery
<b>Suite 2 Occupancy:</b>	Vacant Delivery

### Demographics 0.3 Miles 0.5 Miles 1 Mile

<b>Total Households</b>	401	901	2,548
<b>Total Population</b>	803	1,809	5,142
<b>Average HH Income</b>	\$113,330	\$110,464	\$102,675

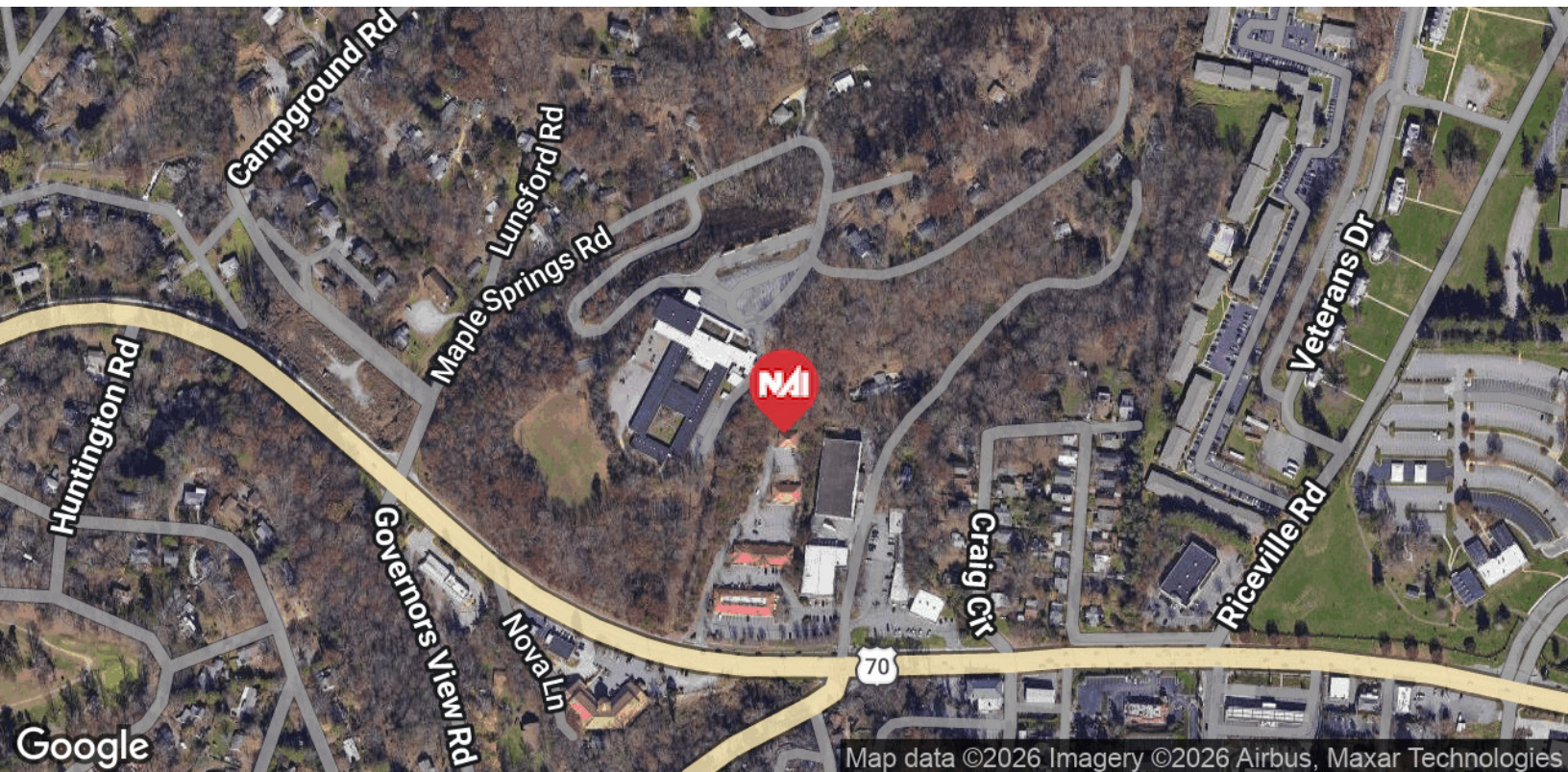
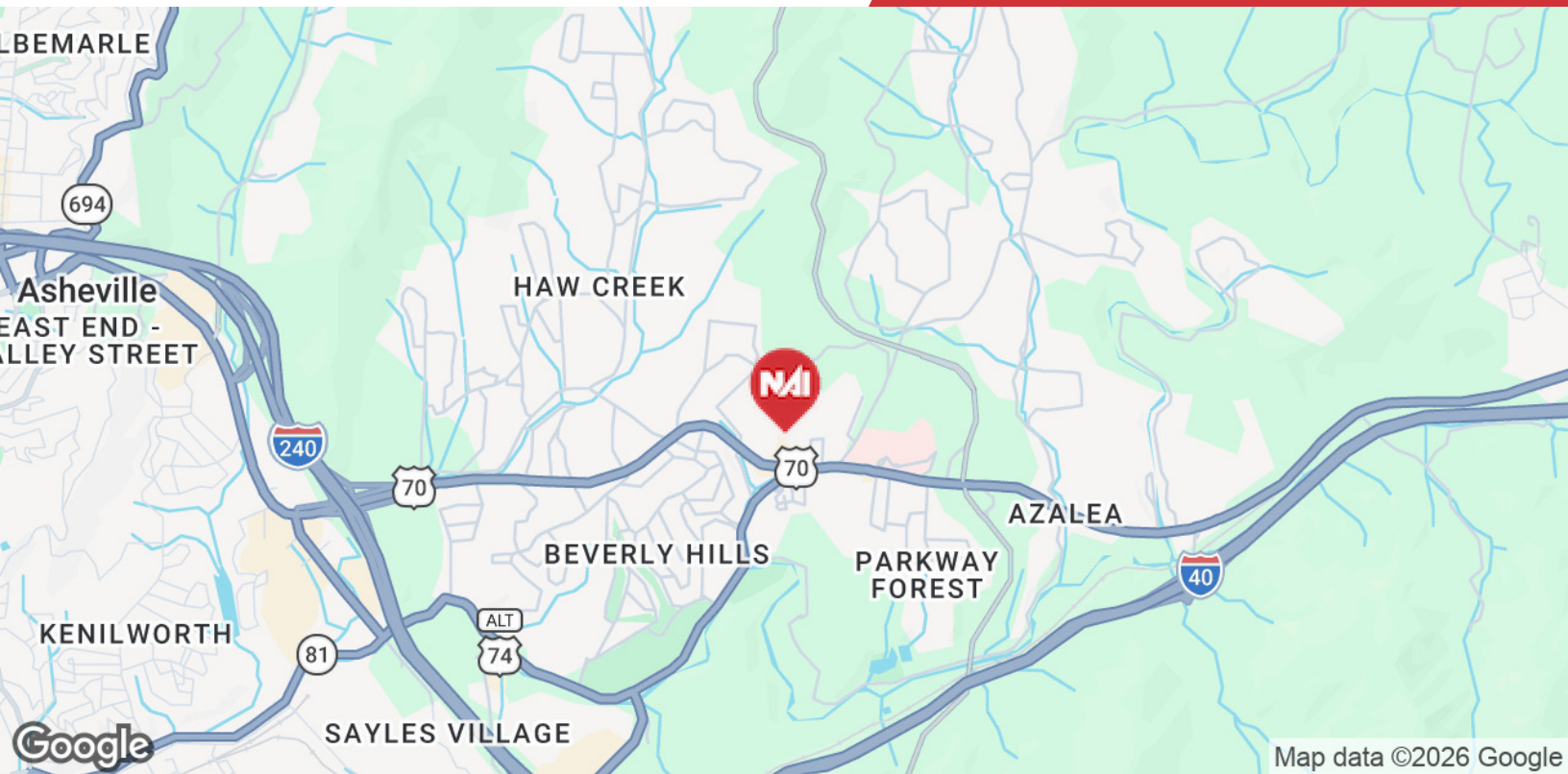
### For More Information

**Chris Mansfield**

O: 845 699 3340

cmansfield@naibeverly-hanks.com | NC #340236





We obtained the information above from sources we believe to be reliable. However, we have not verified its accuracy and make no guarantee, warranty or representation about it. It is submitted subject to the possibility of errors, omissions, change of price, rental or other conditions, prior sale, lease or financing, or withdrawal without notice. We include projections, opinions, assumptions or estimates for example only, and they may not represent current or future performance of the property. You and your tax and legal advisors should conduct your own investigation of the property and transaction.

300 Executive Park  
Asheville, NC 28801  
828 210 3940 tel  
[naibeverly-hanks.com](http://naibeverly-hanks.com)

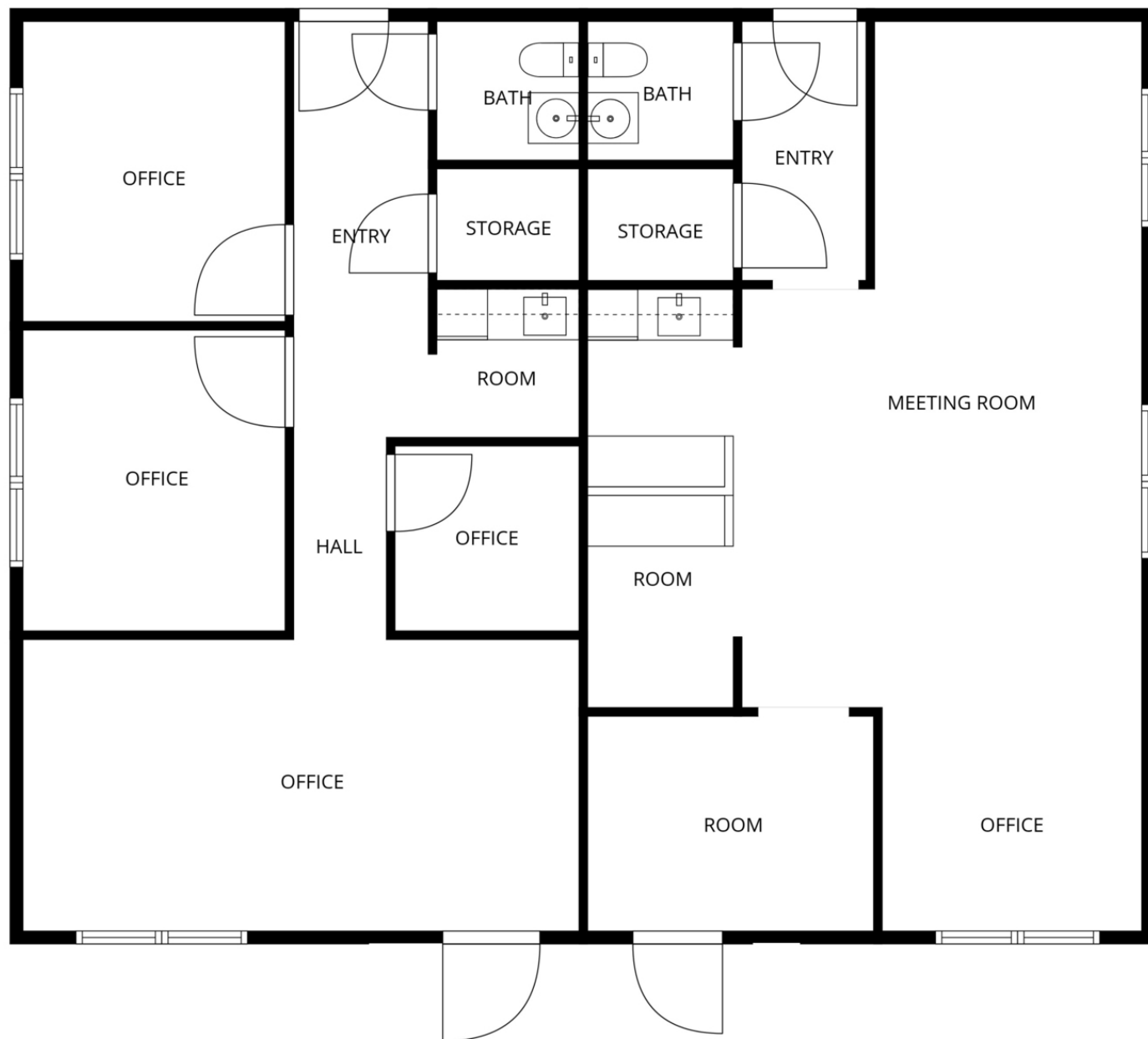




We obtained the information above from sources we believe to be reliable. However, we have not verified its accuracy and make no guarantee, warranty or representation about it. It is submitted subject to the possibility of errors, omissions, change of price, rental or other conditions, prior sale, lease or financing, or withdrawal without notice. We include projections, opinions, assumptions or estimates for example only, and they may not represent current or future performance of the property. You and your tax and legal advisors should conduct your own investigation of the property and transaction.

300 Executive Park  
Asheville, NC 28801  
828 210 3940 tel  
[naibeverly-hanks.com](http://naibeverly-hanks.com)





FLOOR PLAN CREATED BY CUBICASA APP. MEASUREMENTS DEEMED HIGHLY RELIABLE BUT NOT GUARANTEED.

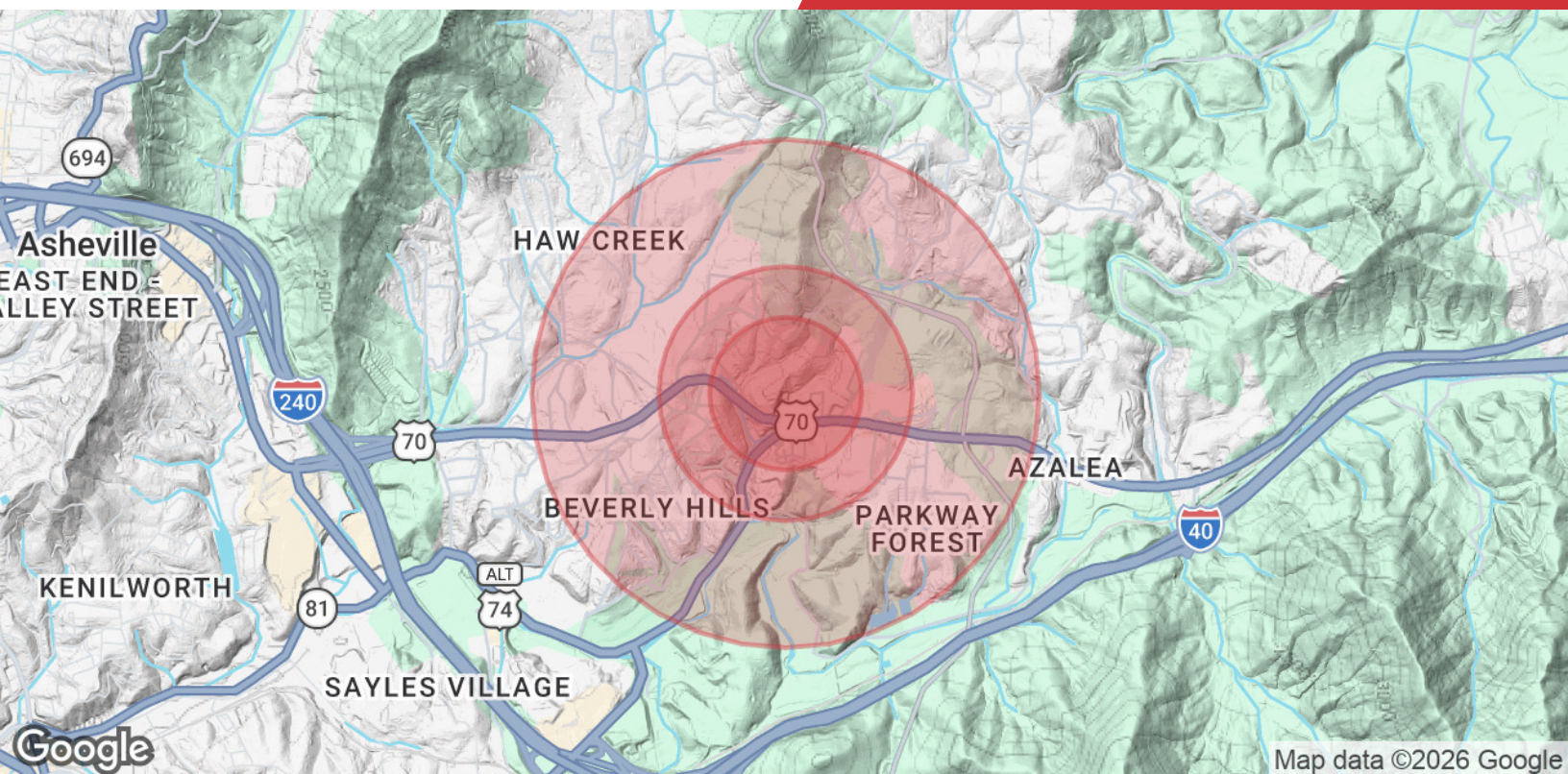


We obtained the information above from sources we believe to be reliable. However, we have not verified its accuracy and make no guarantee, warranty or representation about it. It is submitted subject to the possibility of errors, omissions, change of price, rental or other conditions, prior sale, lease or financing, or withdrawal without notice. We include projections, opinions, assumptions or estimates for example only, and they may not represent current or future performance of the property. You and your tax and legal advisors should conduct your own investigation of the property and transaction.

300 Executive Park  
Asheville, NC 28801  
828 210 3940 tel  
[naibeverly-hanks.com](http://naibeverly-hanks.com)







## Population

	0.3 Miles	0.5 Miles	1 Mile
<b>Total Population</b>	803	1,809	5,142
<b>Average Age</b>	45	45	45
<b>Average Age (Male)</b>	44	44	44
<b>Average Age (Female)</b>	45	46	46

## Households & Income

	0.3 Miles	0.5 Miles	1 Mile
<b>Total Households</b>	401	901	2,548
<b># of Persons per HH</b>	2	2	2
<b>Average HH Income</b>	\$113,330	\$110,464	\$102,675
<b>Average House Value</b>	\$411,924	\$405,839	\$403,826

Demographics data derived from AlphaMap





## Chris Mansfield

Commercial Broker

cmansfield@naibeverly-hanks.com

Direct: 845.699.3340 | Cell: 845.699.3340

NC #340236

## Professional Background

Christopher Mansfield brings to the table his award-winning background in architectural design and development to every commercial brokerage transaction he participates in. He completed his Bachelor's degree in Architectural Technology at Alfred State College, and later pursued and received an accredited Masters of Architecture degree at The University of Massachusetts, Amherst. During his time in Massachusetts, he was awarded a joint AIA / WMAIA scholarship for his award-winning infill development design. Upon graduation, he was also awarded the AIA Henry Adams Certificate of Merit for excellence in the study of architecture.

Prior to embarking on his commercial brokerage career, Christopher actively practiced as a licensed architect in a real estate development setting, with a heavy focus on commercial projects. This experience in architect-driven development allowed him to master high level real estate skills in detailed proforma development, site analysis, zoning analysis, property acquisitions, entitlements, architectural site plan development, bidding and negotiating, and state of the art project presentation and marketing. During his time in practice, Christopher served his community as architectural review consultant for the City of Poughkeepsie Planning Board. In 2019 he was a recipient of the prestigious Dutchess County Chamber of Commerce - 40 under 40 Movers and Shakers award.

In more recent years, Christopher has actively applied his invaluable architecture and development background in daily practice as a distinguished, professionally trained, commercial broker. He has worked with numerous clients, in a variety of capacities, on a wide array of asset types including land development, industrial, multi family, retail, and office use. He has also invested in and holds commercial real estate personally, serving as managing member of his mixed use commercial portfolio. Christopher believes personal commercial real estate ownership gives him the distinguished ability to deeply understand the unique challenges both property owners and tenants face both during, and long after, a transaction is completed. His experience both personally and professionally allows him to navigate the challenges and drive every transaction towards long term success.

In his spare time Christopher currently exercises his design and development skills doing social change development projects internationally. He currently sits on the Board of Directors of the Honduras Hope Mission non-profit, and led the site selection, design, and development of the mission's new community center, which completed construction in 2022. The community centers design has been showcased by the AIA It takes Community, 2017, Greenbuild 2017, and the United Nations Habitat III. When he's not working, Christopher enjoys spending time with his wife, playing frisbee with his Sheepdog Pancho, and riding his motorcycle through the mountains.

NAI Beverly-Hanks  
300 Executive Park  
Asheville, NC 28801  
828.210.3940