

89-36 Sutphin Boulevard, Jamaica, Queens, NY

Property Features

- ❖ Outstanding location
- ❖ Facing Queens County Courthouse
- ❖ 24 / 7 access
- ❖ Immediate availability
- ❖ Turn-key/fully furnished
- ❖ On-site parking available
- ❖ Possible divisions
- ❖ Heavy pedestrian and vehicular traffic

Location

Just off Van Wyck Expressway

Transportation

One block to E, F, J & Z subway,
LIRR and AirTrain
Several bus lines on Sutphin
Boulevard and Hillside and
Jamaica Avenues

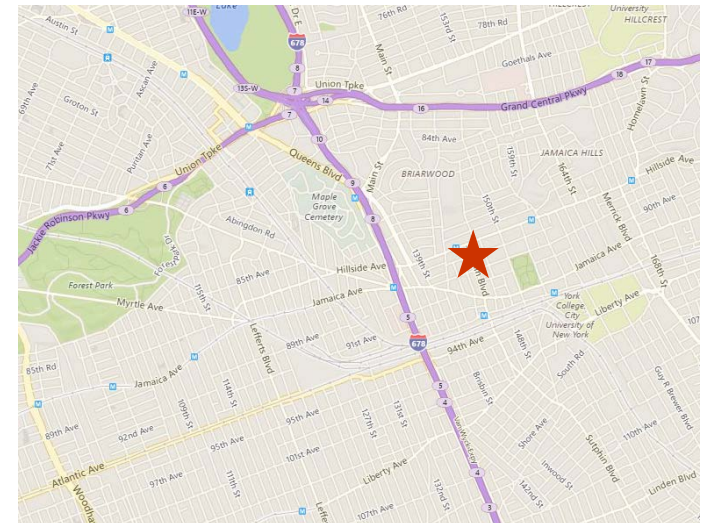
CALL FOR PRICING

***1,063 Sq. Ft.
Prime Office
Space
for Lease in
The Heart of
Jamaica***



**Last Remaining
Space in the
Building**

**Portion of 3rd Floor
(Suites 310A & B)**



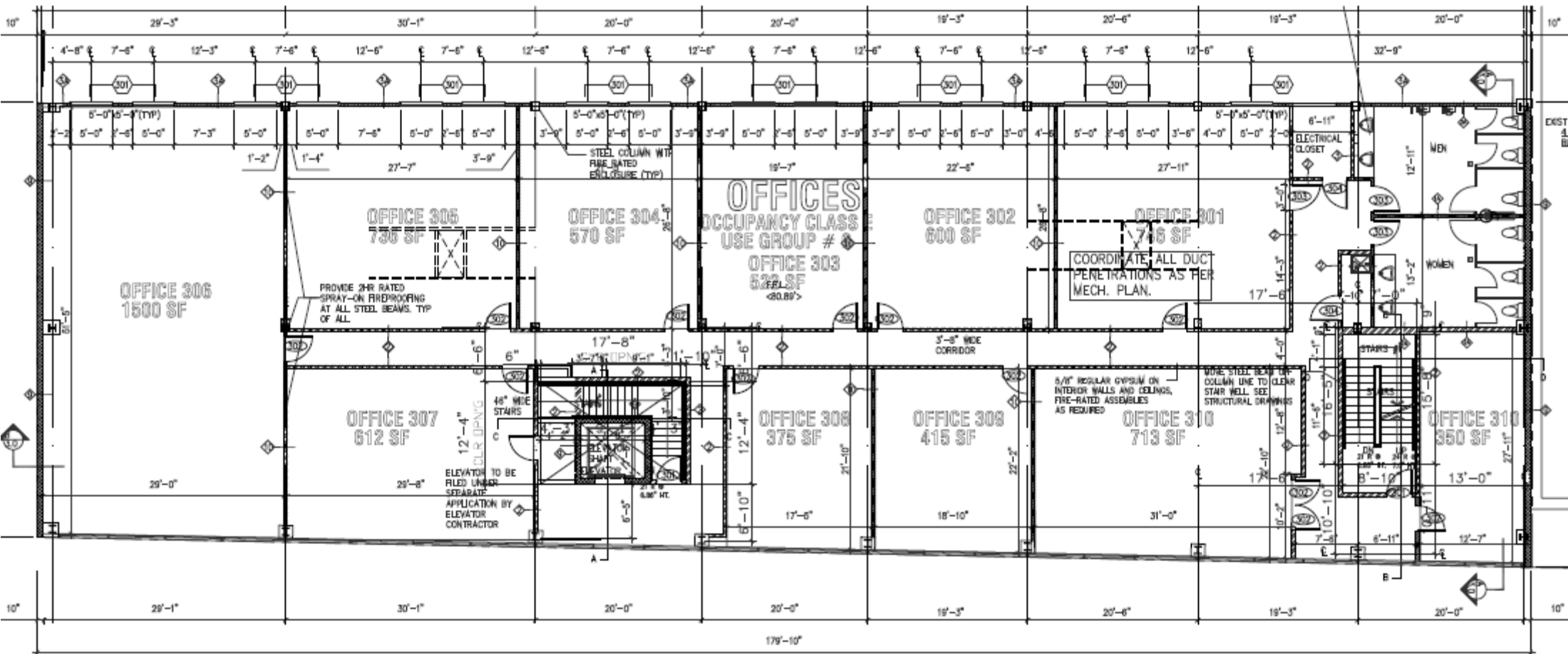
For Further Information and Inspection, Please Contact Exclusive Agent:

Melissa Grasso • Salesperson • (718) 371-0127 • mgrasso@s-z.com

Kaufman Astoria Studios 35-11 35th Avenue, Long Island City, NY 11106 • (718) 392-5959 • Fax (718) 937-6546

www.s-z.com

89-36 Sutphin Boulevard, Jamaica, Queens, NY



For Further Information and Inspection, Please Contact Exclusive Agent:
Melissa Grasso • Salesperson • (718) 371-0127 • mgrasso@s-z.com

Kaufman Astoria Studios 35-11 35th Avenue, Long Island City, NY 11106 • (718) 392-5959 • Fax (718) 937-6546
www.s-z.com