



6409 N Orange Blossom Trail / 6322 Terrell Rd

Mount Dora, FL 32757

Property Highlights

- 38.86 acre site offering retail and residential mixed use development opportunities
- Frontage on Orange Blossom Trail to 25,500 vehicles per day
- Located immediately south of Publix anchored shopping center
- 350+ Single Family Homes Under Construction behind the site as part of Stoneybrook Hills' next development phase. 188 Single Family Homes Under Construction 1.5 Miles south of site.
- Growth market of Lake County in the Orlando MSA

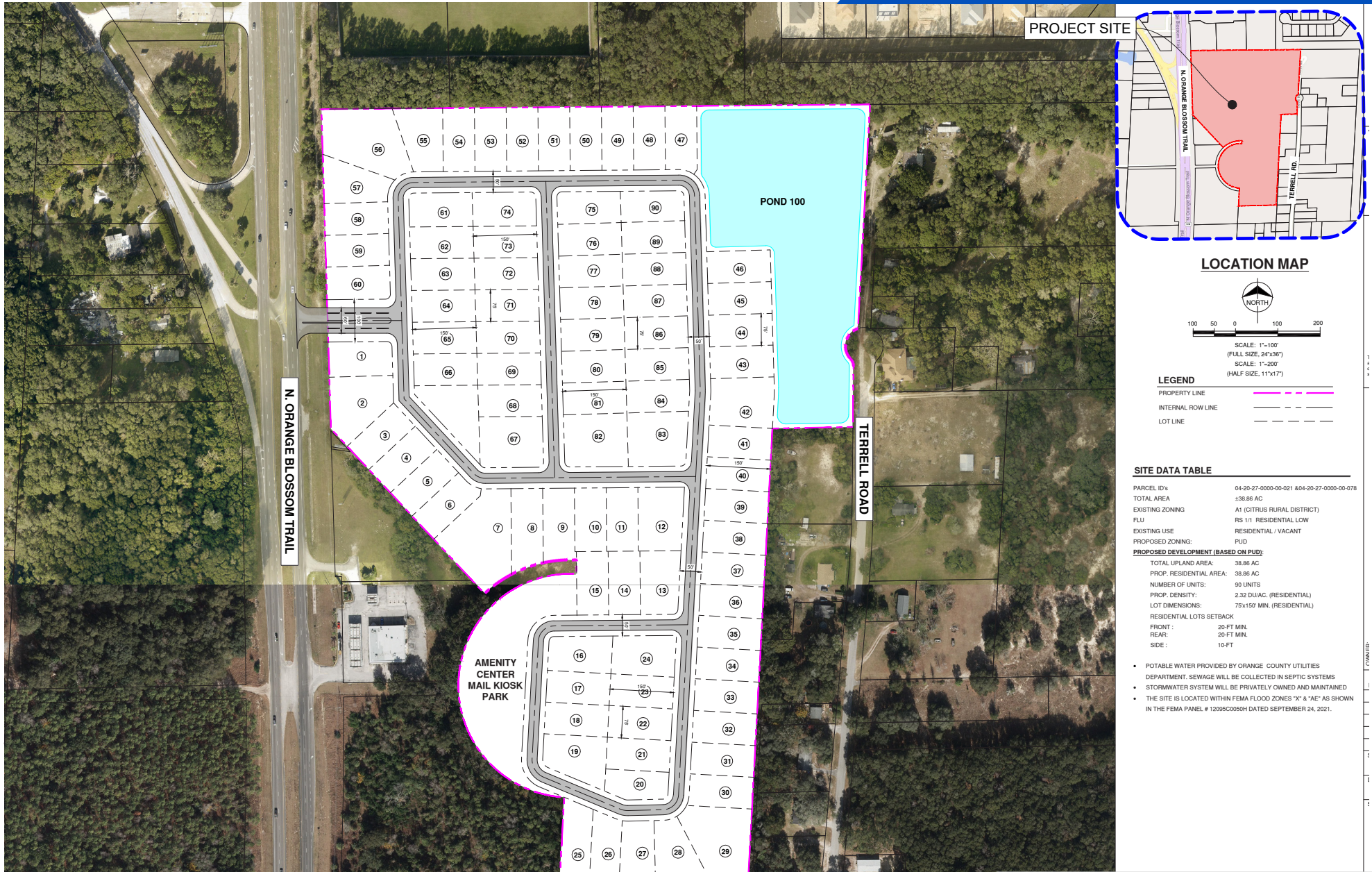
DEMOGRAPHIC INFORMATION

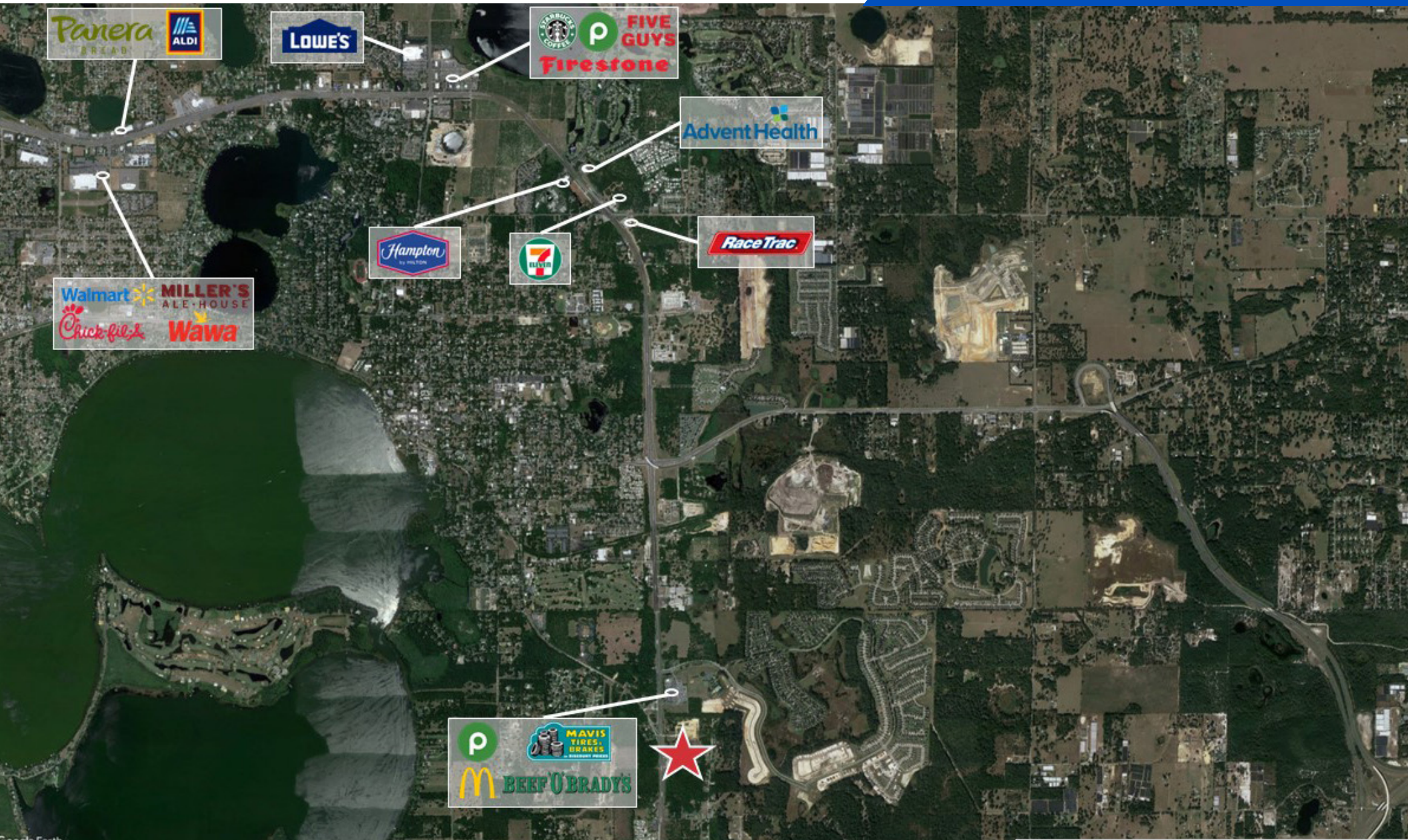


Radius	Population	Households
1 Mile	3,641	1,360
3 Miles	19,185	7,619
5 Miles	46,691	19,730



Radius	Average HH Income	Employees
1 Mile	\$120,589	504
3 Miles	\$102,395	15,662
5 Miles	\$95,079	19,720





We obtained the information above from sources we believe to be reliable. However, we have not verified its accuracy and make no guarantee, warranty or representation about it. It is submitted subject to the possibility of errors, omissions, change of price, rental or other conditions, prior sale, lease or financing, or withdrawal without notice. We include projections, opinions, assumptions or estimates for example only, and they may not represent current or future performance of the property. You and your tax and legal advisors should conduct your own investigation of the property and transaction.

401 E Jackson St Suite 3300
Tampa, FL 33602
813 726 4853 tel
vendita.ai