



VELOCITY VENTURES

1 BELMONT AVENUE | SUITE 550 | BALA CYNWYD, PA

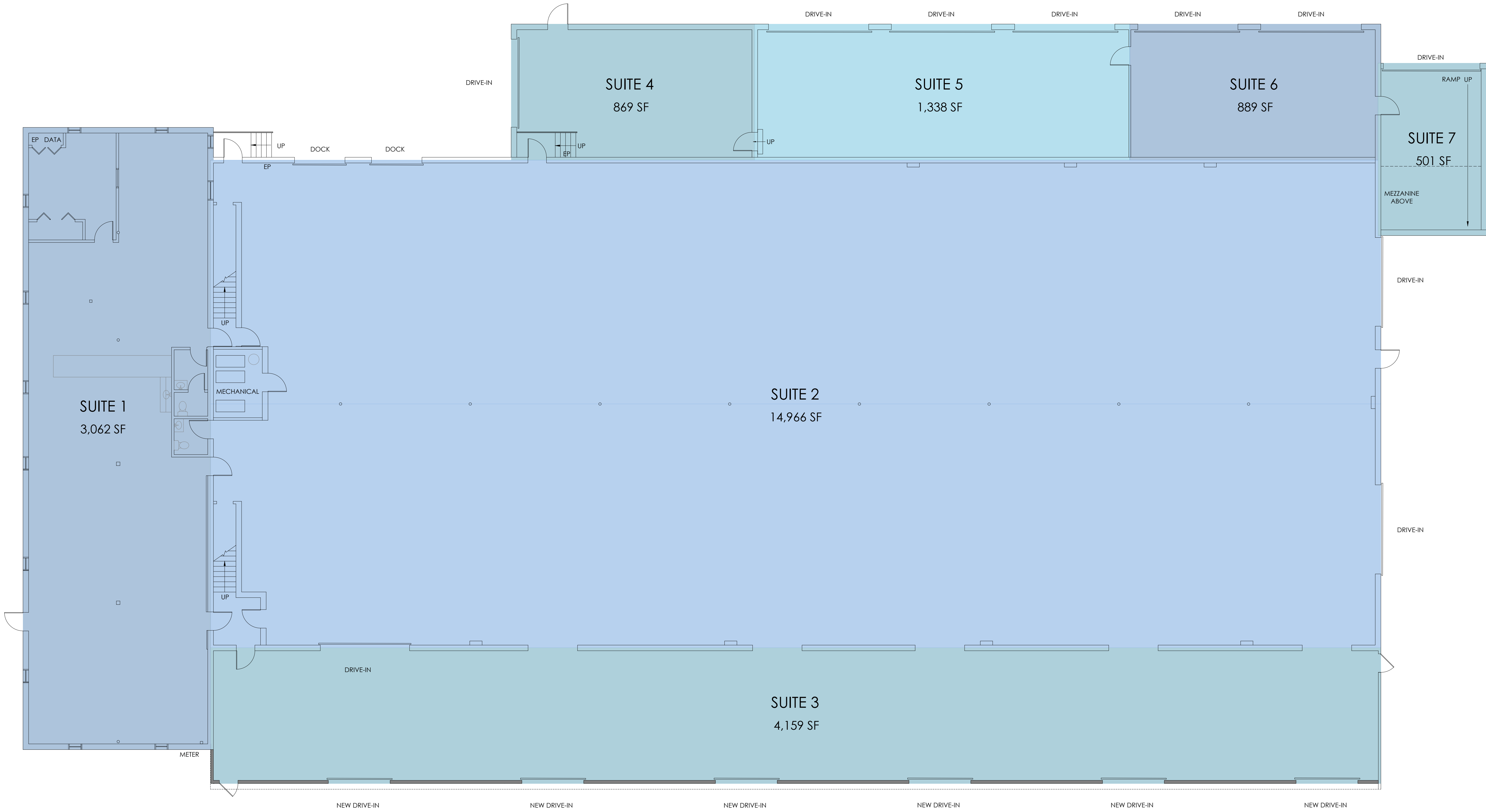
CLIENT

EXISTING CONDITIONS

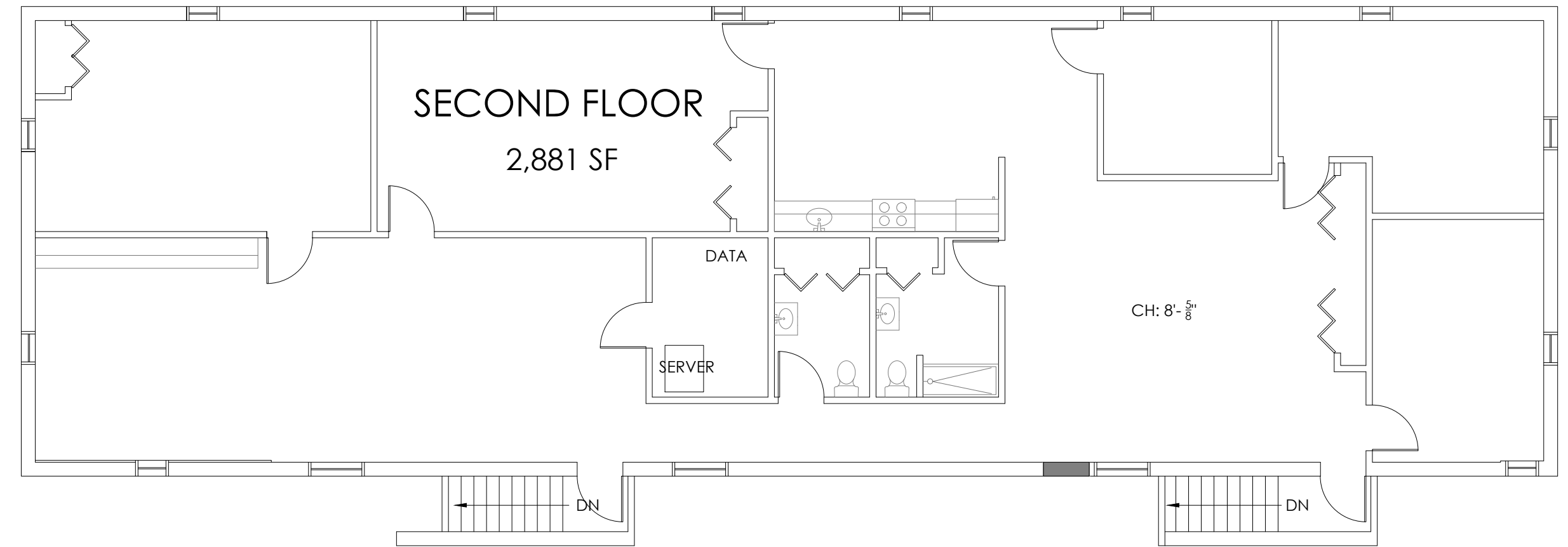
PROJECT ADDRESS

821 W 5TH ST
LANSDALE | PA

This drawing is intended for marketing purposes only, is not intended to be complete in all respects, and is provided solely as a convenience for the recipient. Any and all information contained herein should be independently field verified by any recipient of this drawing before relying on same. Neither Velocity Ventures Partners LLC ("VVP"), nor its owners, principals, officers, members, employees, representatives or agents (collectively, the "VVP Parties") make any claim as to the truth, completeness, or accuracy of the contents herein and all VVP Parties hereby expressly disclaim any and all such representations and warranties, both express and implied. The recipient of this drawing waives any and all claims against the VVP Parties arising from or relating to this drawing. Any and all intellectual property rights pertaining to this drawing are the sole and exclusive property of VVP. This drawing may not be duplicated, published, sold, or distributed without the prior written consent of VVP.



1 FIRST FLOOR PLAN
EC SCALE: 1/8" = 1'-0"



2 SECOND FLOOR PLAN
EC SCALE: 1/8" = 1'-0"

821 W 5TH STREET
EXISTING FLOOR PLAN

NO.	REVISIONS

April 19, 2024