

2300 W. Higgins Road Hoffman Estates, Illinois

4 Star Retail
Storefront
Retail/Restaurant



Barrington Square Town Center

Christine Simek
630.473.5070
christine@xroadsadvisors.com

Introduction



Built in 1975, Barrington Square Town Center is ideal for medical, health and wellness, med spa, salon services, or retail. This property is surrounded by popular and well trafficked retail and restaurants. Situated in the Northwest Suburbs near the I-90 interchange and Barrington Road.

Building Features



- Available Suites:
 - Suite 2330 and Suite 2334 are contiguous suites as 1 unit - 2,985 SF - \$15.00/SF NNN
 - Suite 2338- 2,037 SF - \$16.00/SF NNN
 - Former Lab Corp space featuring ample plumbing
- Onsite ownership/management
- Center of a large retail, office, and medical, complex
- New building facade
- Signage Opportunity with Name and Logo
- Located just minutes from the newly built, Seasons, luxury apartment complex with 700 new residents

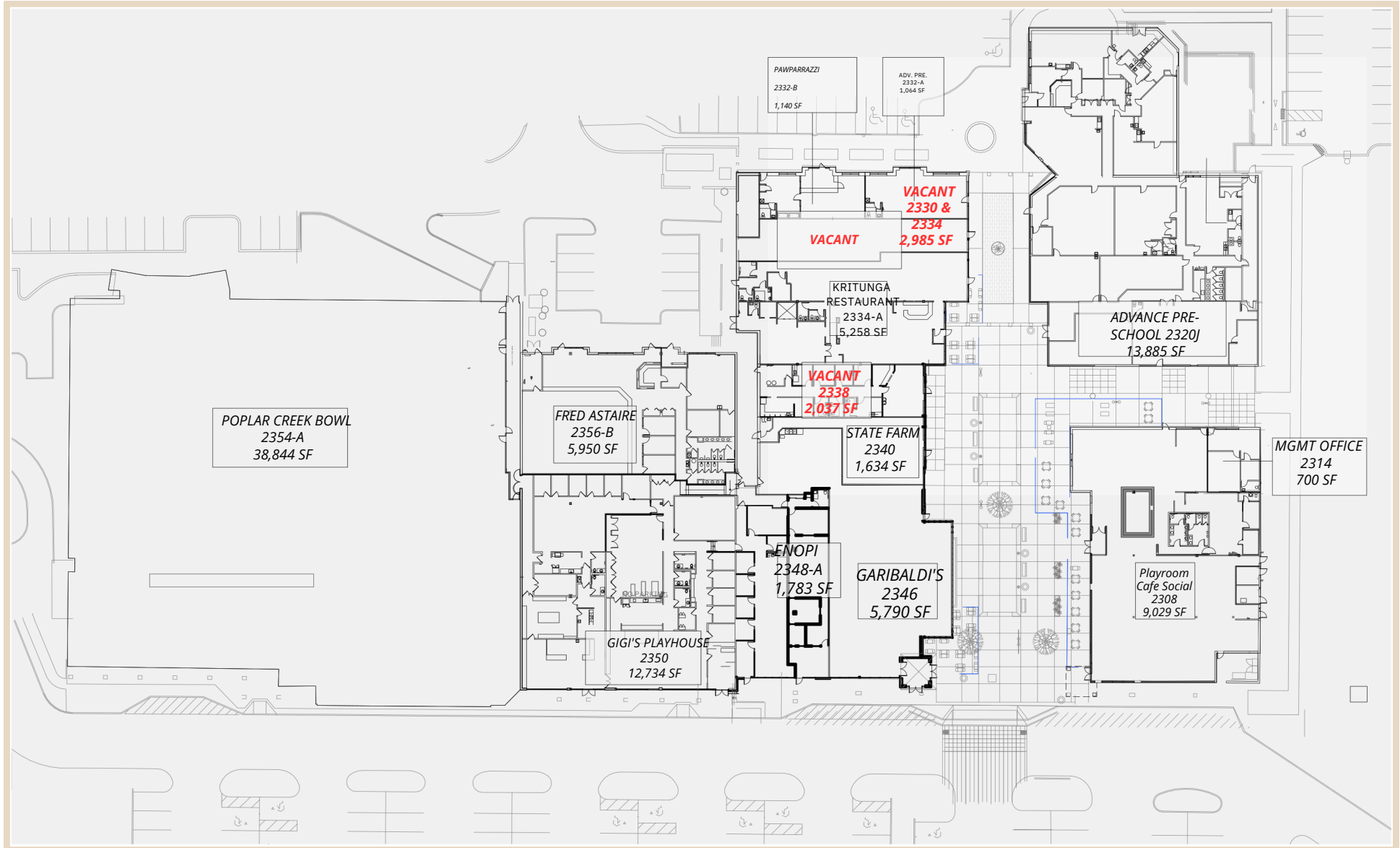
A light beige circular graphic containing text about traffic count.

Traffic Count:
6,000 cars daily

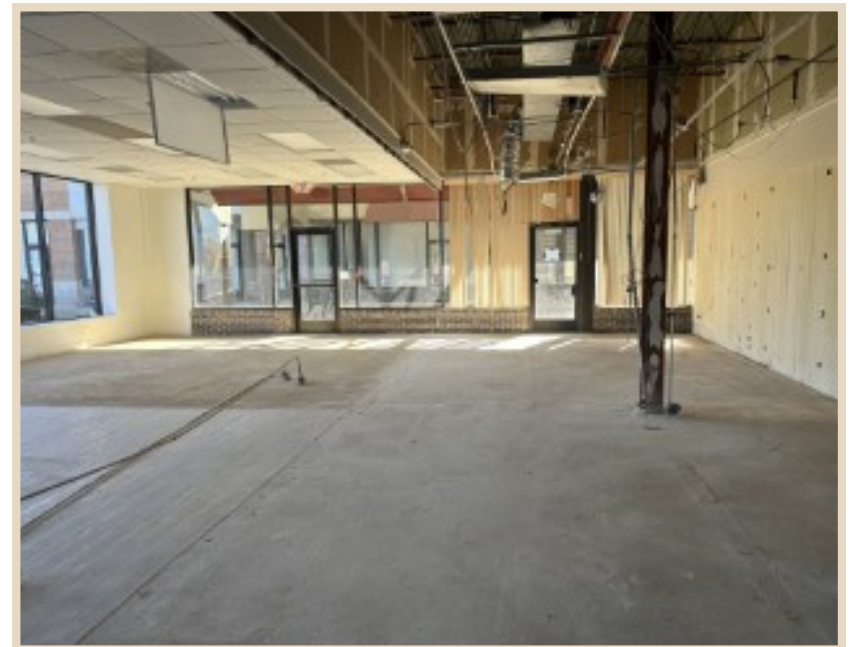
Exterior Photos



Floor Plan: Barrington Town Square Center



Interior Photos 2330 & 2334 - 2,985 SF Contiguous



Floor Plan: Suite 2330 & 2334 - 2,985 SF Contiguous



VACANT- 2330 & 2334

VACANT- 2330 & 2334

POSSIBLE BANQUET FACILITY EXPANSION INTO ADJACENT SUITE 2334 AND 2330

VACANT (2334)	= 1,863 RSF
VACANT (2330)	= 1,122 RSF
TOTAL SUITE	2,985 RSF

KEY PLAN - VACANT - 2330 & 2334



1717 DEERFIELD ROAD, SUITE 320, DEERFIELD, IL 60015
 P: 847.509.4070 | interworkarchitects.com
 COPYRIGHT ©2024 INTERWORK ARCHITECTS INCORPORATED

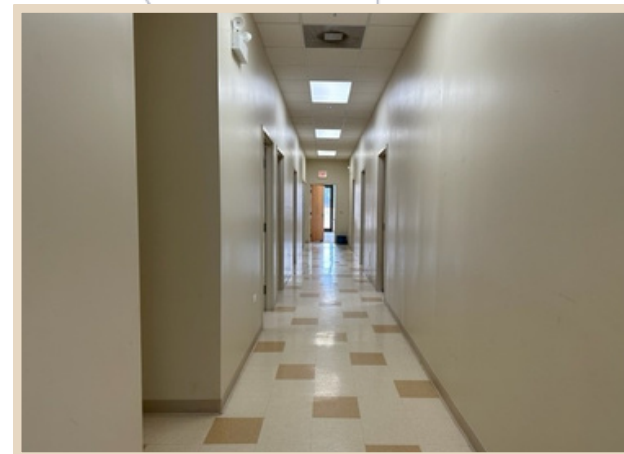


VACANT - 2330 & 2334

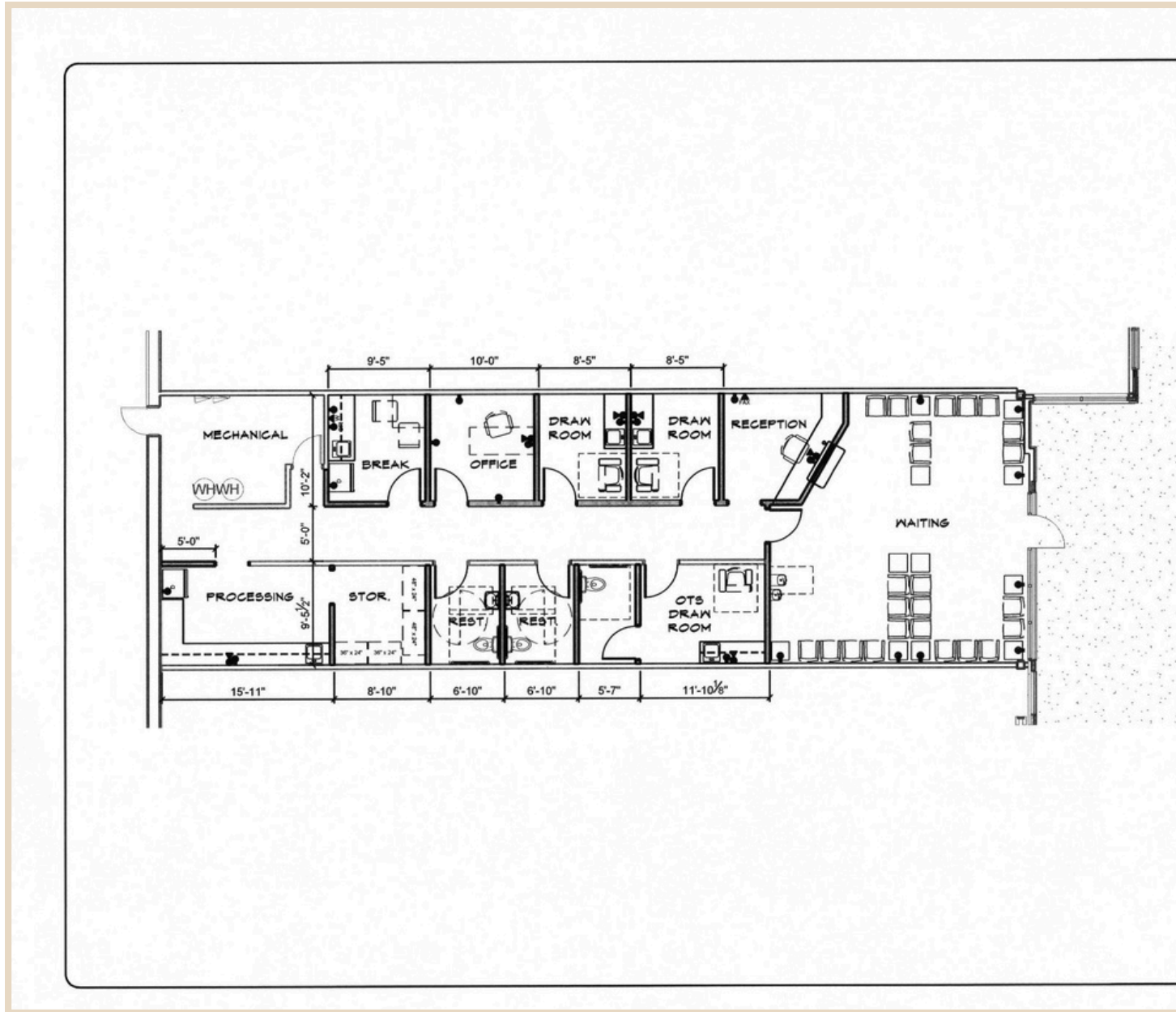
RETAIL LEASING PLAN

DATE	08.05.2024
REV#	
PROJ #	9705.000.0000
SHEET	SK-02

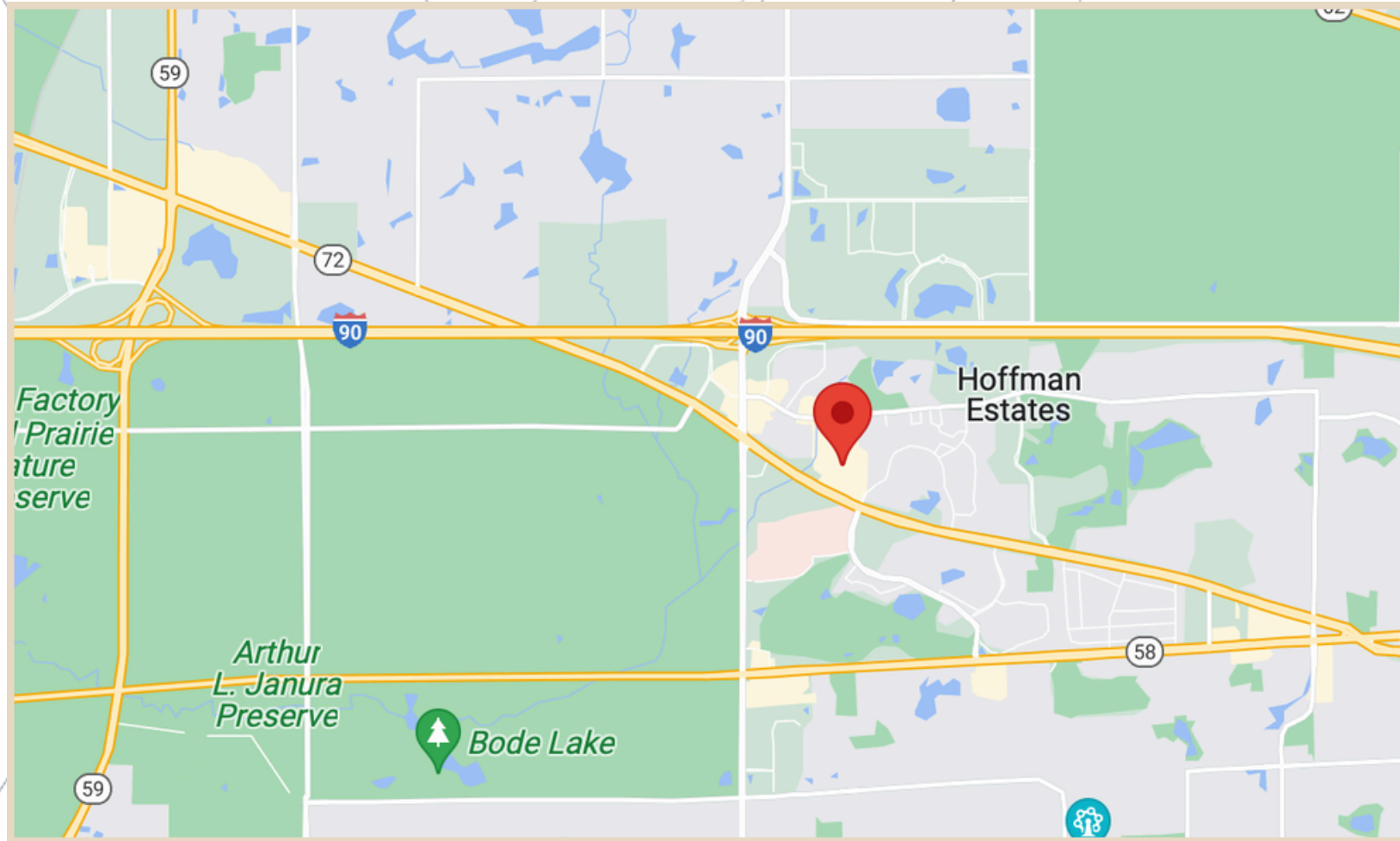
Interior Photos: Suite 2338 - 2,037 SF



Floor Plan: Suite 2338- 2,037 SF



Location



Barrington Square Town Center



2300 W. Higgins Road
Hoffman Estates, Illinois



Christine Simek
630.473.5070

christine@xroadsadvisors.com