

Mountain Oyster Club

6300 E El Dorado Circle, Suite B-300 | Tucson, AZ 85715



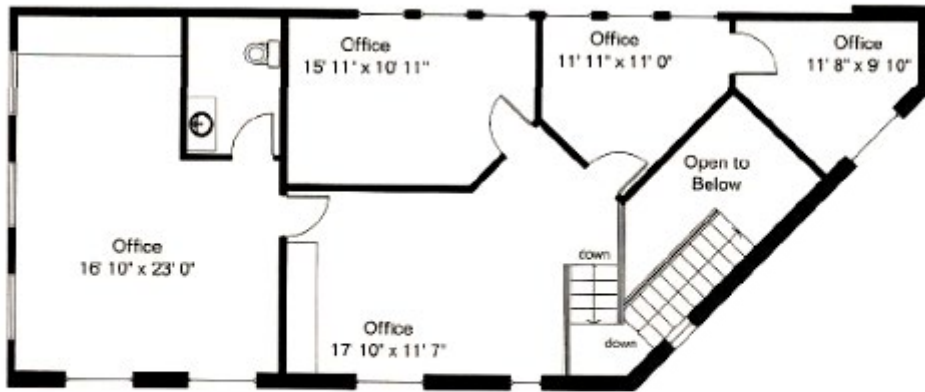
Property Highlights

- + The Mountain Oyster Club's property is one of Tucson's gems. The main building was originally the Pond Mansion, built in 1936.
- + This office building was thoughtfully designed to blend in with its surroundings, incorporating a stone exterior and an arched wooden door.
- + The interior is charming, soulful, and very "Tucson".

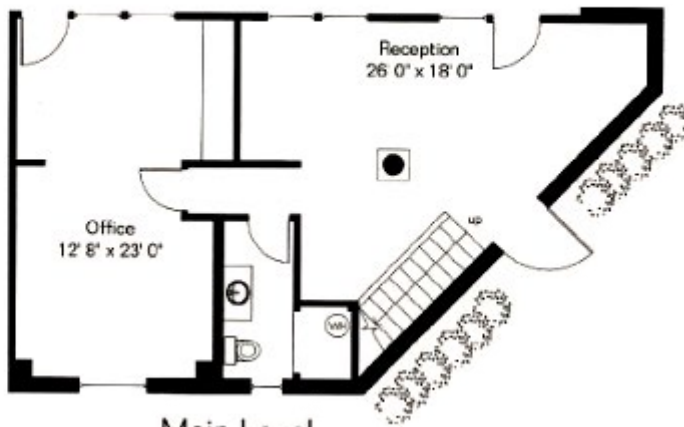
Property Details

Location	6300 E. El Dorado Circle, Suite B300, near Speedway & Wilmot
Available Size	±2,025 SF, two stories.
Sublease Rate	\$18.75/SF full service.
Master Lease	Expires 2/28/2030.

Floor Plan

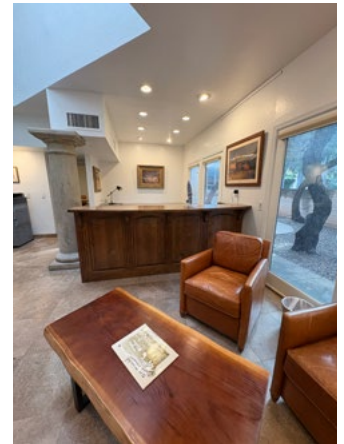


Upper Level



Not to Scale

Main Level



Contact Us

Buzz Isaacson
+1 520 323 5151
buzz.isaacson@cbre.com

Annie Lewis
+1 520 323 5141
annie.lewis@cbre.com

© 2026 CBRE, Inc. All rights reserved. This information has been obtained from sources believed reliable but has not been verified for accuracy or completeness. CBRE, Inc. makes no guarantee, representation or warranty and accepts no responsibility or liability as to the accuracy, completeness, or reliability of the information contained herein. You should conduct a careful, independent investigation of the property and verify all information. Any reliance on this information is solely at your own risk. CBRE and the CBRE logo are service marks of CBRE, Inc. All other marks displayed on this document are the property of their respective owners, and the use of such marks does not imply any affiliation with or endorsement of CBRE. Photos herein are the property of their respective owners. Use of these images without the express written consent of the owner is prohibited.