

FORMER ADULT DAYCARE FOR LEASE

**139 WOODFIELD DRIVE
MACON, GA 31210
BIBB COUNTY**

**±6,000 SF
±0.86 ACRE**

\$9/SF, NNN



KEVIN HARKINS C: 478.338.0623

KHARKINS@THESUMMITGROUPMACON.COM

4124 ARKWRIGHT ROAD, SUITE 1, MACON, GA 31210

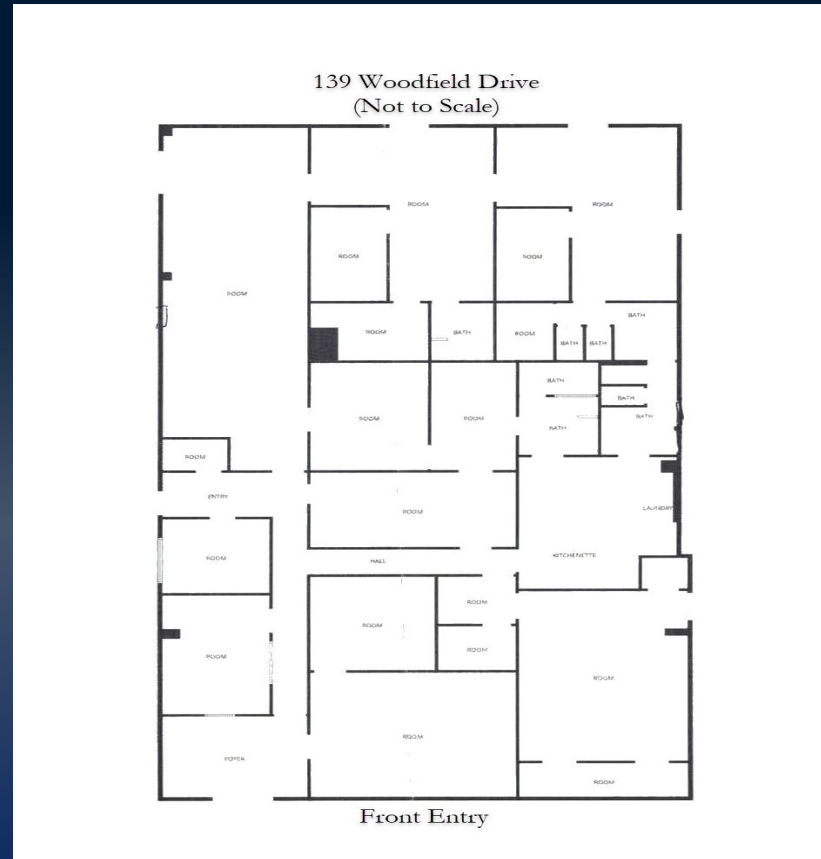
O: 478.750.7507

WWW.THESUMMITGROUPMACON.COM



PROPERTY INFORMATION

- ±6,000 SF available
- Total building size : ±9,000 SF
- Situated on ±0.86 acre
- Multiple activity rooms and office spaces
- Includes a kitchenette, laundry room, and multiple restrooms
- Year built: 2000
- Zoned PDE (Planned Development)
- Conveniently located off Mercer University Drive (Hwy 74)



139 WOODFIELD DRIVE
MACON, GA 31210
BIBB COUNTY



AERIAL MAP & TRAFFIC COUNTS

Traffic Counts (GDOT Estimates)
Mercer University Drive - 21,500 VPD
Interstate 475 - 65,400 VPD



The information contained herein has been compiled from various sources, both private and public. It is accurate and complete only to the extent to which The Summit Group has been able to ascertain from third party sources. As such, no warranty or guarantee is given or implied with regard to the accuracy or completeness of any information contained herein. Any interested party shall be required to conduct its own due diligence and investigations to verify, review, audit, or otherwise insure the information contained herein.



ADDITIONAL PHOTOS



The information contained herein has been compiled from various sources, both private and public. It is accurate and complete only to the extent to which The Summit Group has been able to ascertain from third party sources. As such, no warranty or guarantee is given or implied with regard to the accuracy or completeness of any information contained herein. Any interested party shall be required to conduct its own due diligence and investigations to verify, review, audit, or otherwise insure the information contained herein.

