

Coming Soon!

212 Markham Street | Perris, California



± 80,527 SF For Sale or Lease

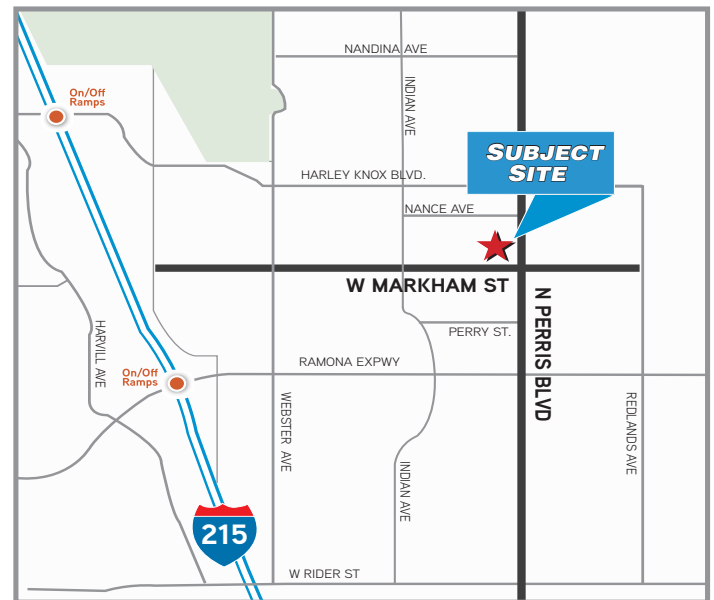


Property Features

- +/- 80,527 SF Industrial Warehouse
- 2,262 SF of 2-Story Office Area
- Divisible to +/- 51,763 SF & +/- 28,764 SF
- ESFR Ready
- 10 Dock High Doors (9' x 10')
- 2 Grade Level Door (12' x 14')
- 30' Warehouse Clearance Height
- Large Secured Truck Court
- 1200 Amps of Power
- Easy I -215 Freeway Access
- Corporate Neighbors Include:

Ross Stores, Harman Kardon, Home Depot
Lowes Home Improvement, Philips Lighting,
Walgreens, Hanesbrands, Whirlpool, Amazon,
General Mills, Fisher & Paykel, iHerb

4Q 2019 Delivery



IAN DEVRIES | 949.724.5509
Executive Vice President
ian.devries@colliers.com
DRE# 01019868

CHRIS DEVRIES | 949.724.5504
Associate Vice President
chris.devries@colliers.com
DRE# 01867314

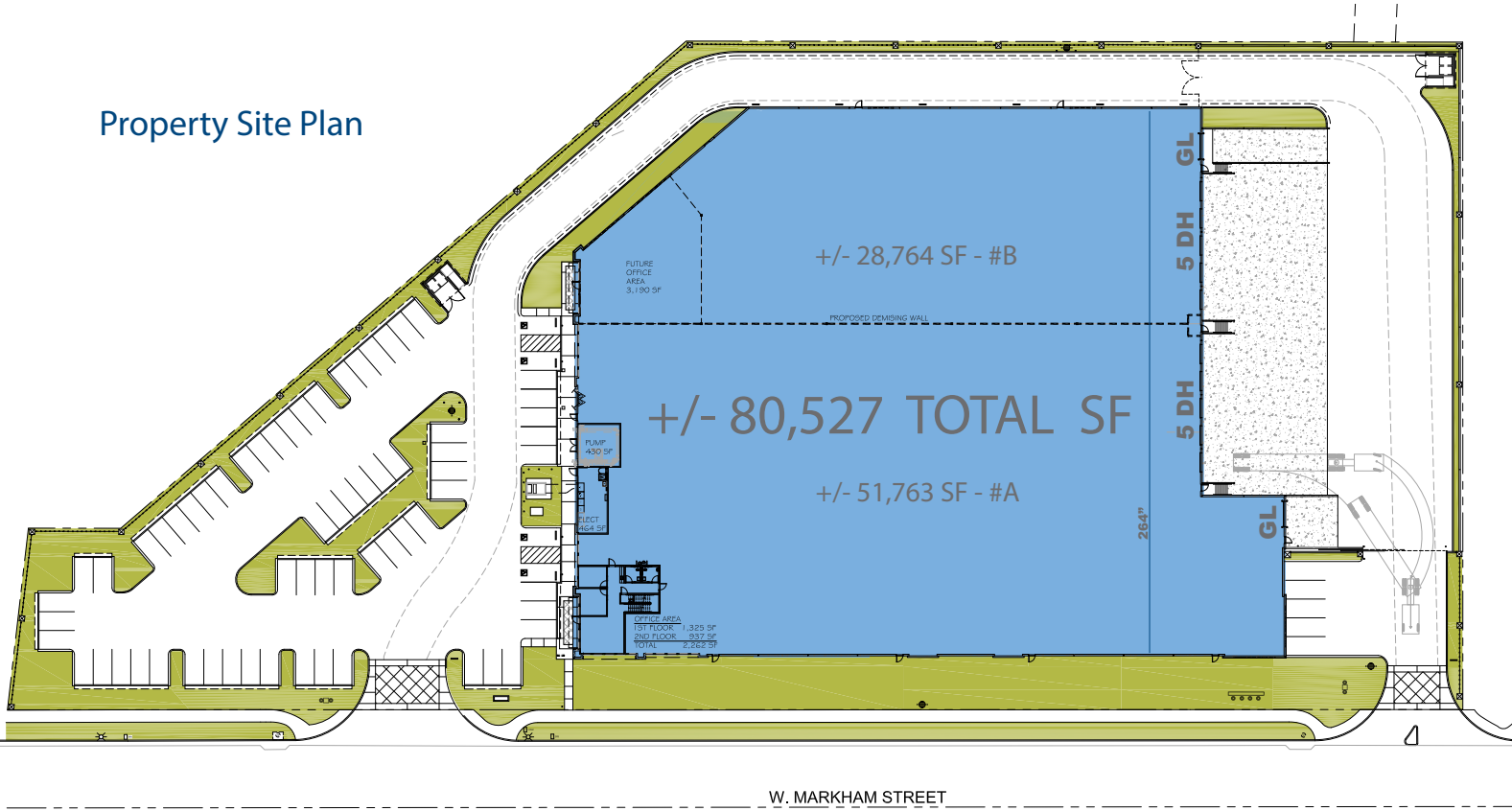


Colliers International makes no guarantees, representations or warranties of any kind, expressed or implied, regarding the information including, but not limited to, warranties of content, accuracy and reliability. This publication is the copyrighted property of Colliers International and /or its licensor(s). 2019. All rights reserved.

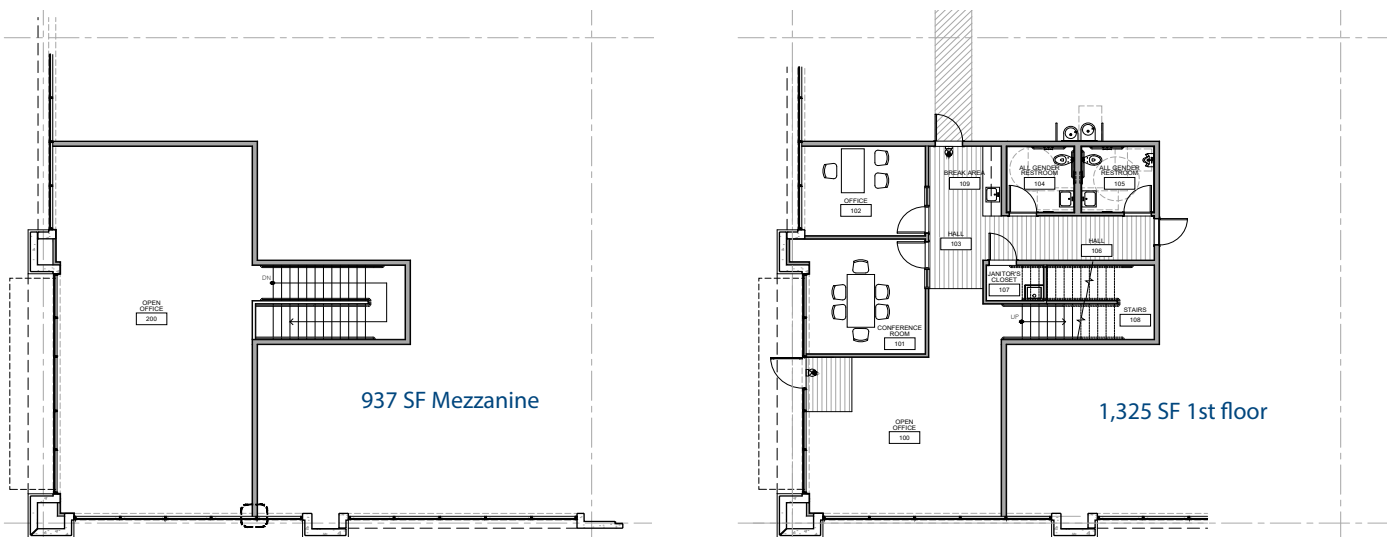
For Sale or Lease, Perris CA
 +/- 80,527 SF Industrial Warehouse



Property Site Plan



Existing Office Layout



IAN DEVRIES | 949.724.5509
 Executive Vice President
 ian.devries@colliers.com
 DRE# 01019868

CHRIS DEVRIES | 949.724.5504
 Associate Vice President
 chris.devries@colliers.com
 DRE# 01867314

DRIVING DISTANCES FROM SITE

I-215 Freeway	1.6 miles
Highway 60	6.6 miles
Ontario Int'l Airport	30.7 miles
Port of Long Beach	72.5 miles

For Sale or Lease | +/- 80,527 SF Class A Industrial Building



IAN DEVRIES | 949.724.5509
Executive Vice President
ian.devries@colliers.com
DRE# 01019868

CHRIS DEVRIES | 949.724.5504
Associate Vice President
chris.devries@colliers.com
DRE# 01867314

DIRECTIONS TO SITE
From I-215, take the Harley Knox Boulevard exit and go east. Head south on Indian Street (turn right). Go east (turn left) on Markham Street. The Property is located half a block up on your left-hand side at 212 Markham Street.