

# PROFESSIONAL MEDICAL CENTER

1002 N. CHURCH STREET  
GREENSBORO | NORTH CAROLINA



## FOR LEASE

# PROPERTY OVERVIEW

## PROPERTY HIGHLIGHTS

- Four-story Class "A" building in a prominent location
- Excellent access and visibility directly across from Moses Cone Hospital
- Recent upgrades, deck and surface parking, and move-in ready medical office suites
- Conveniently located at the intersection of Wendover Avenue (Hwy 220) and N. Church Street
- Originally developed by a group of local physicians, has attracted medical professionals and medically-related tenants since its completion
- Total building area is 91,352 SF
- The building was built in 1999
- Suite 200, 203, and 001 are 2nd generation medical spaces
- Suite 10 is an open plan, ideal for an administrative use



**CONTACT:**  
ELAINE BOYLE  
919-348-7943  
elaine@FlagshipHP.com



### AVAILABLE SPACE:

Suite 001 - 3,898  
Suite 10 - 1,633 SF  
Suite 200 - 3,828 SF  
Suite 203 - 1,546 SF



### LEASE RATE:

Suite 001 - \$23.00/ SF  
Suite 10 - \$20.00/SF  
Suite 200 - \$23.00/SF  
Suite 203 - \$23.00/SF



### LEASE TYPE:

NNN



### AVAILABLE DATE:

Suite 001 - March 2026  
Suite 10 - Immediate  
Suite 200 - March 2026  
Suite 203 - January 2026

# FLOOR PLAN: SUITE 001





# SUITE 10 PHOTOS



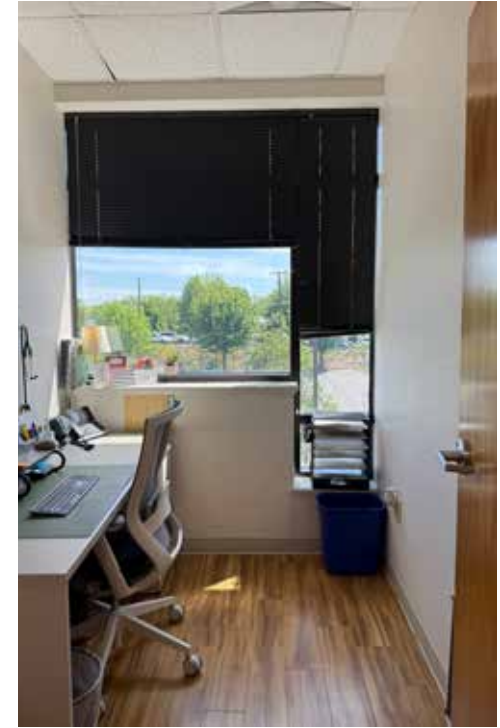
# FLOOR PLAN: SUITE 200



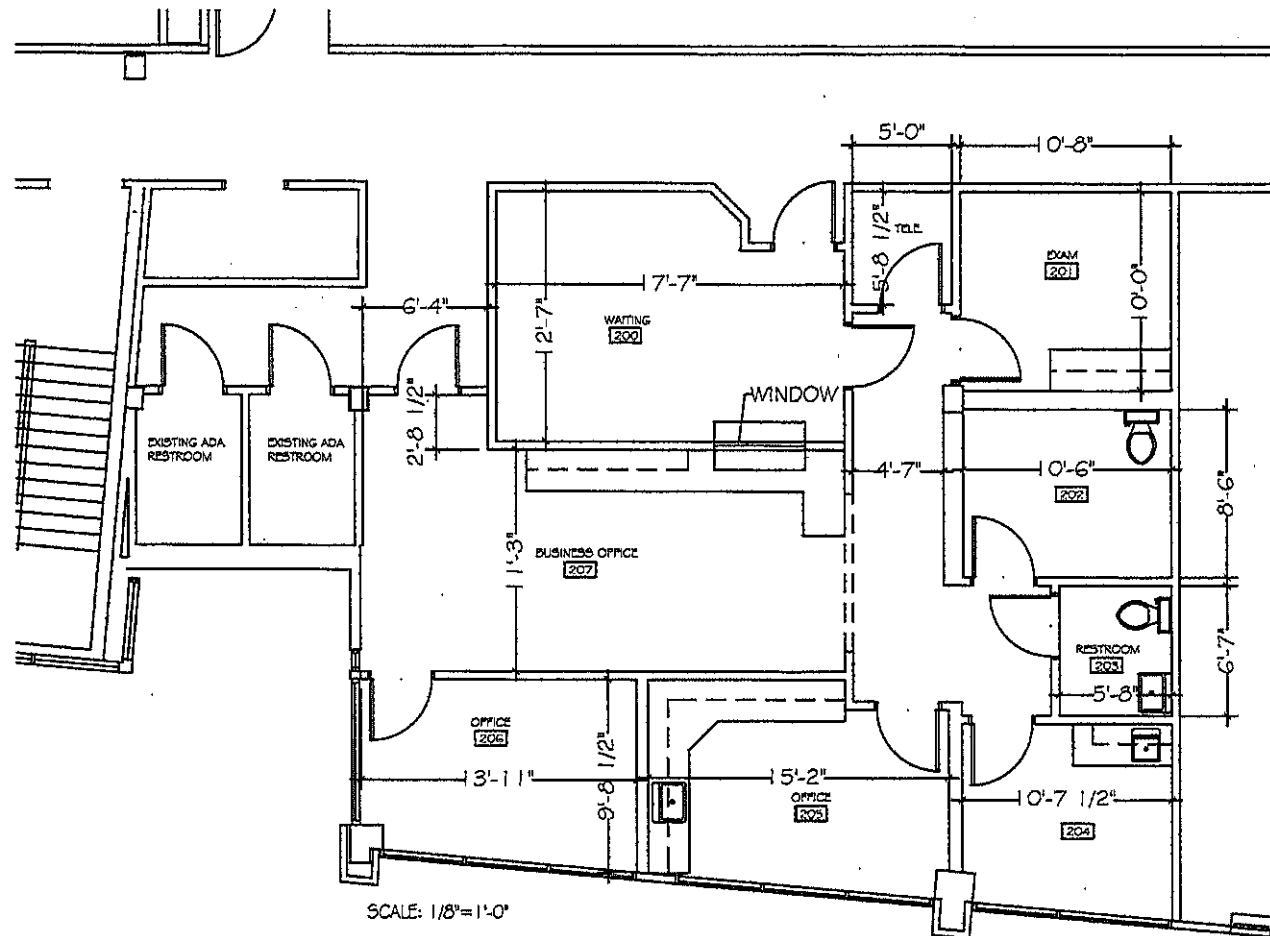
 **VIRTUAL TOUR**



# SUITE 200 PHOTOS



# FLOOR PLAN: SUITE 203





# AREA MAP

