



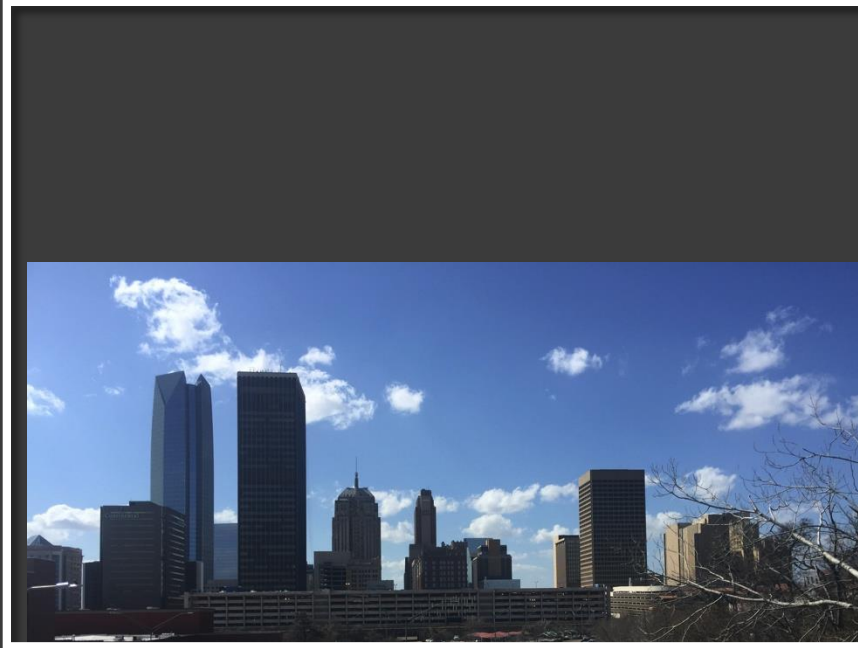
Dowell Center viewed
from Leadership Sq.



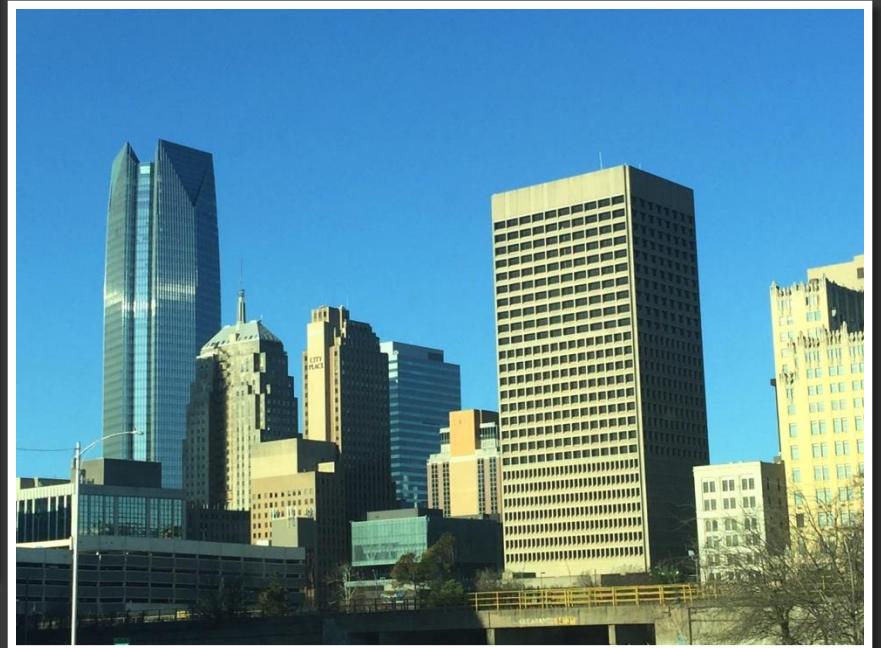
Dowell Center viewed
from Sandridge



Dowell Center viewed
from top floor of
Leadership Sq.



Dowell Center from I235



Dowell Center from Harrison Exit



View of OKC 1932. Dowell Center is just to the left of City Place



View of OKC 1932. Dowell Center in bottom left with oil derrick on roof



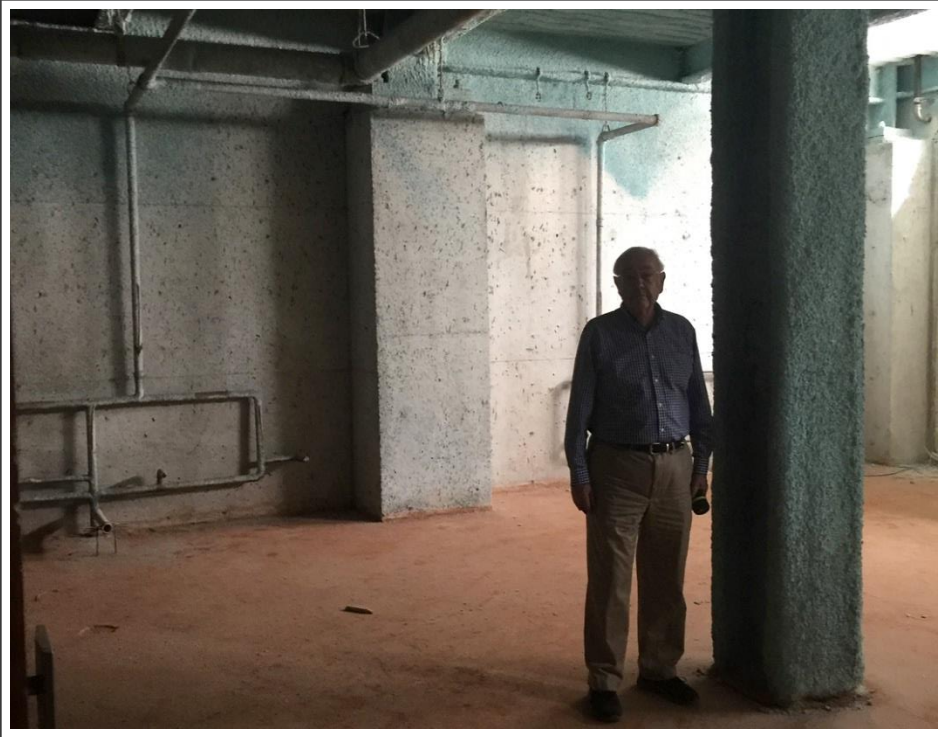
17th Interior East



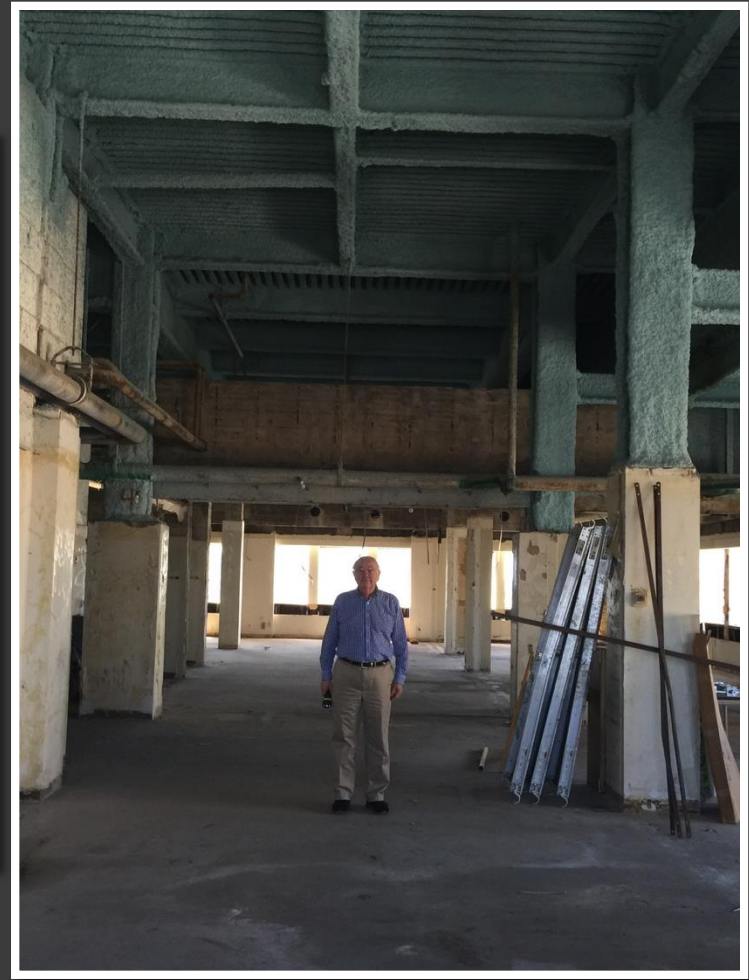
17th Floor Interior
North



17th Floor Interior West



Basement Floor Interior



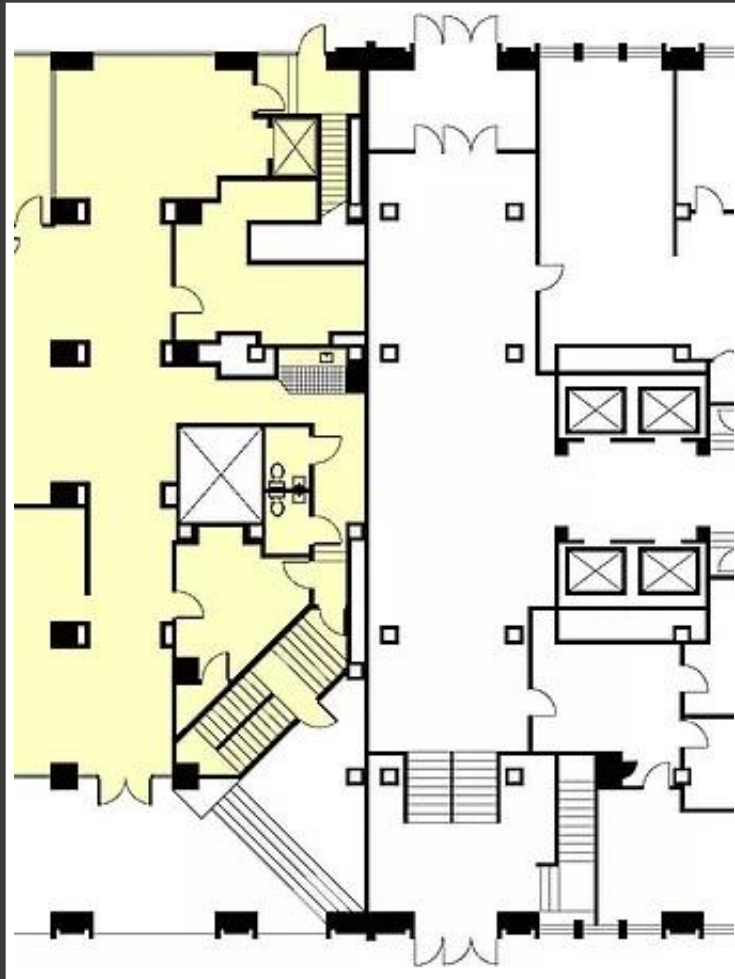
18th Floor Interior



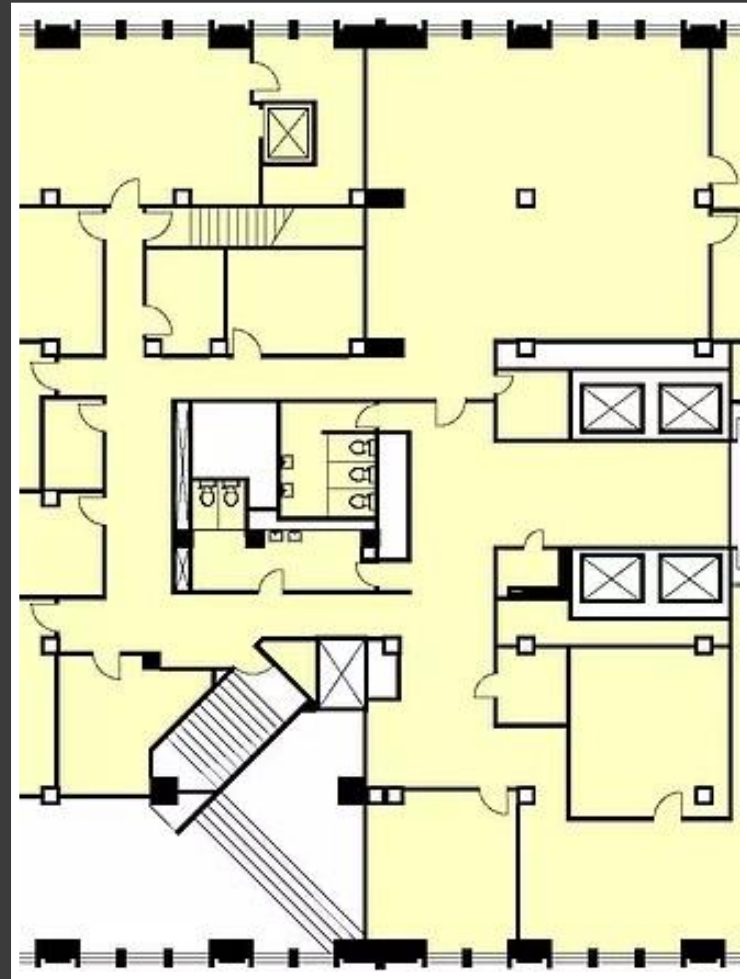
1st Floor Lobby Looking North



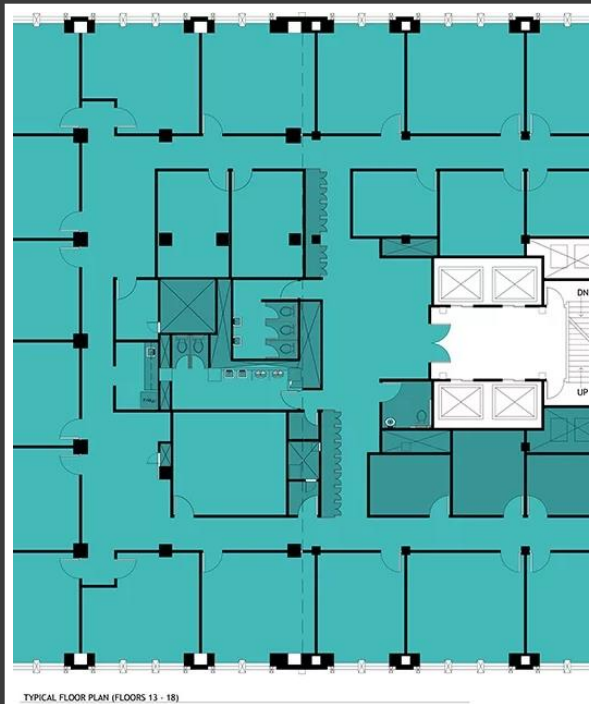
Basement in front of elevators



Current partial 1st floor ready for occupancy



2nd floor currently ready for occupancy



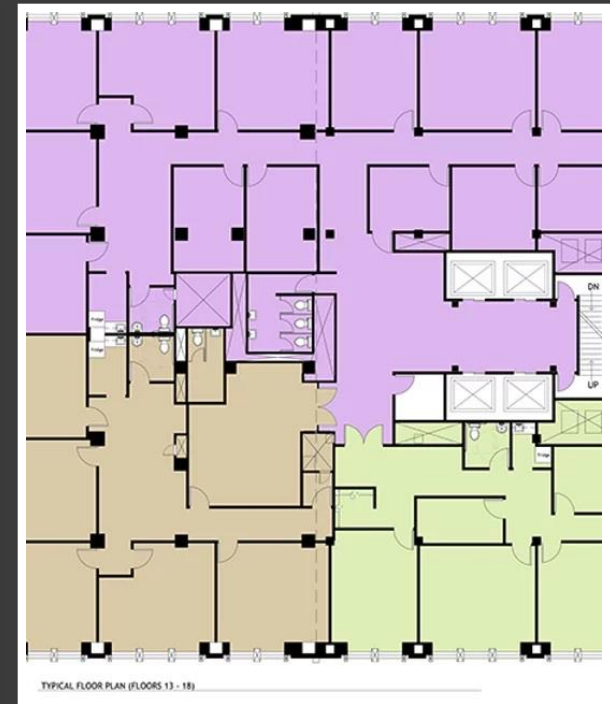
One Suite per Floor

Proposed floor plan for
1 suite per floor on
floors 3 thru 17



Two Suites per Floor

Proposed floor plan for
2 suites per floor on
floors 3 thru 17



Four Suites per Floor

Proposed floor plan for
3 suites per floor on
floors 3 thru 17



Dowell Center: Interior of 1st
Floor



20th Floor West Interior



20th Floor Center
Interior



20th Floor SE Interior



20th Floor Looking SE



20th Floor Looking SW



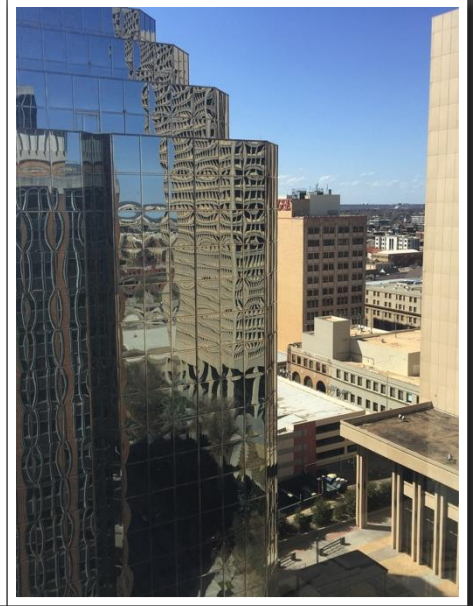
20th Floor Looking NW



20th Floor Looking W



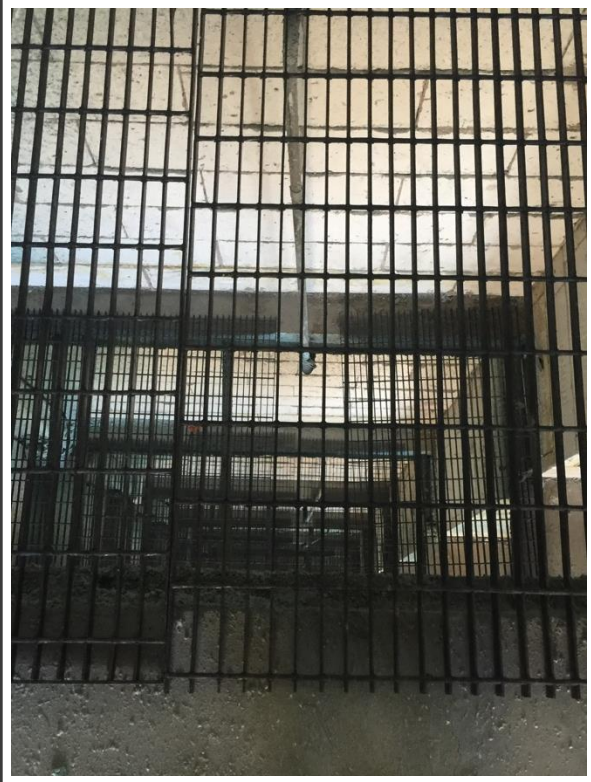
20th Floor Looking N



17th Floor Looking SE (1) E (2) N (3) NW (4)



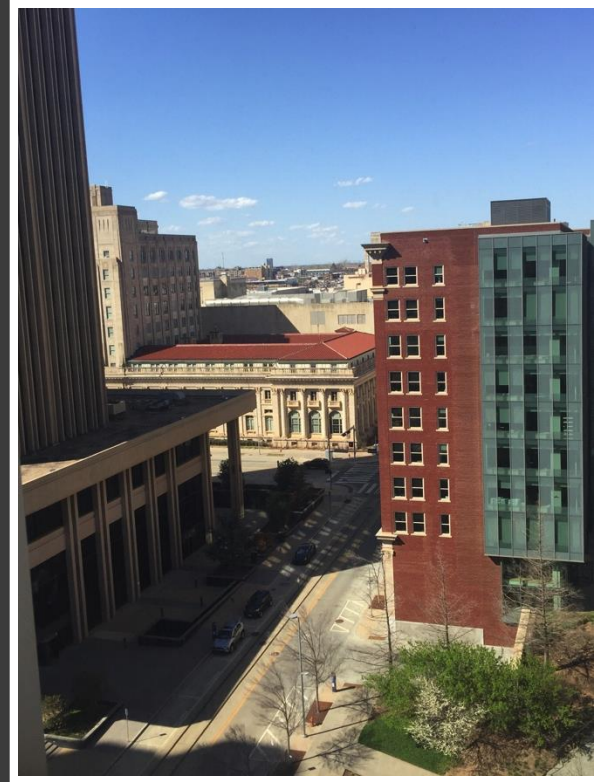
13th Floor Looking W(1) N (2) SE (3) Interior NW (4)



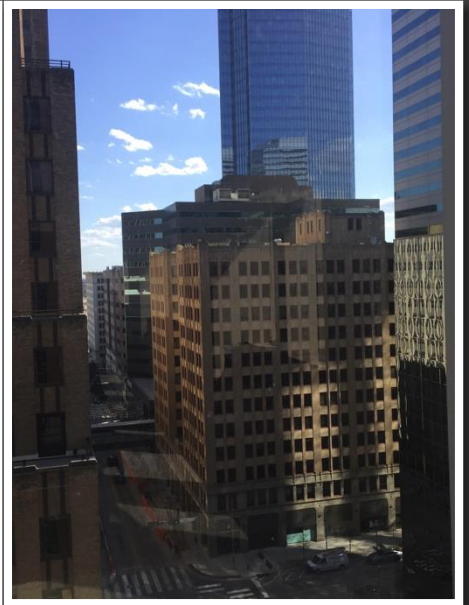
View of West Shaft
From 18th to 2nd Floor



12th Floor East Interior



12th Floor Looking N



12th Floor Looking NW (1) E (3) SE (4)

4th Floor Looking North (2)



4th Floor Looking NW



4th Floor Looking N



4th Floor Looking NE