

# 11623 GLENOAKS BLVD.

PACOIMA, CA 91331

## SHORT TERM LEASES WELCOME

# FOR LEASE

Marc Spellman  
Principal  
818.444.4932  
mspellman@lee-re.com  
DRE# 01039995

 **LEE &  
ASSOCIATES**  
COMMERCIAL REAL ESTATE SERVICES

No warranty or representation is made to the accuracy of the foregoing information. Terms of sale or lease and availability are subject to change or withdrawal without notice.



# 11623 GLENOAKS BLVD.

PACOIMA, CA 91331



**SPACE AVAILABLE:** 20,145 RSF  
**LEASE RATE:** \$1.60/ RSF MG  
**PARKING:** 7/1,000 (143 SPACES)

## PROPERTY HIGHLIGHTS

- Multiple uses: Office, Medical, Retail, Special (School, Church, Etc.)
- Excellent location, located Directly Off 118 Freeway
- Ample Parking
- Divisible to 10,000 RSF
- Fiber Optics available

## PROPERTY DETAILS

11623 Glenoaks Boulevard is a 20,145 RSF Building Located directly off of the 118 Freeway. The building was constructed to meet Government Standards. The improvements include concrete block with steel and wood beam construction in 2001. The property is situated on 2.24 Acres of Commercial Zoned Land. This property features a total of 143 Parking Spaces (7/1,000) Fully Sprinklered and is a perfect opportunity for Office, Medical, Retail, Schools, or a Church use.

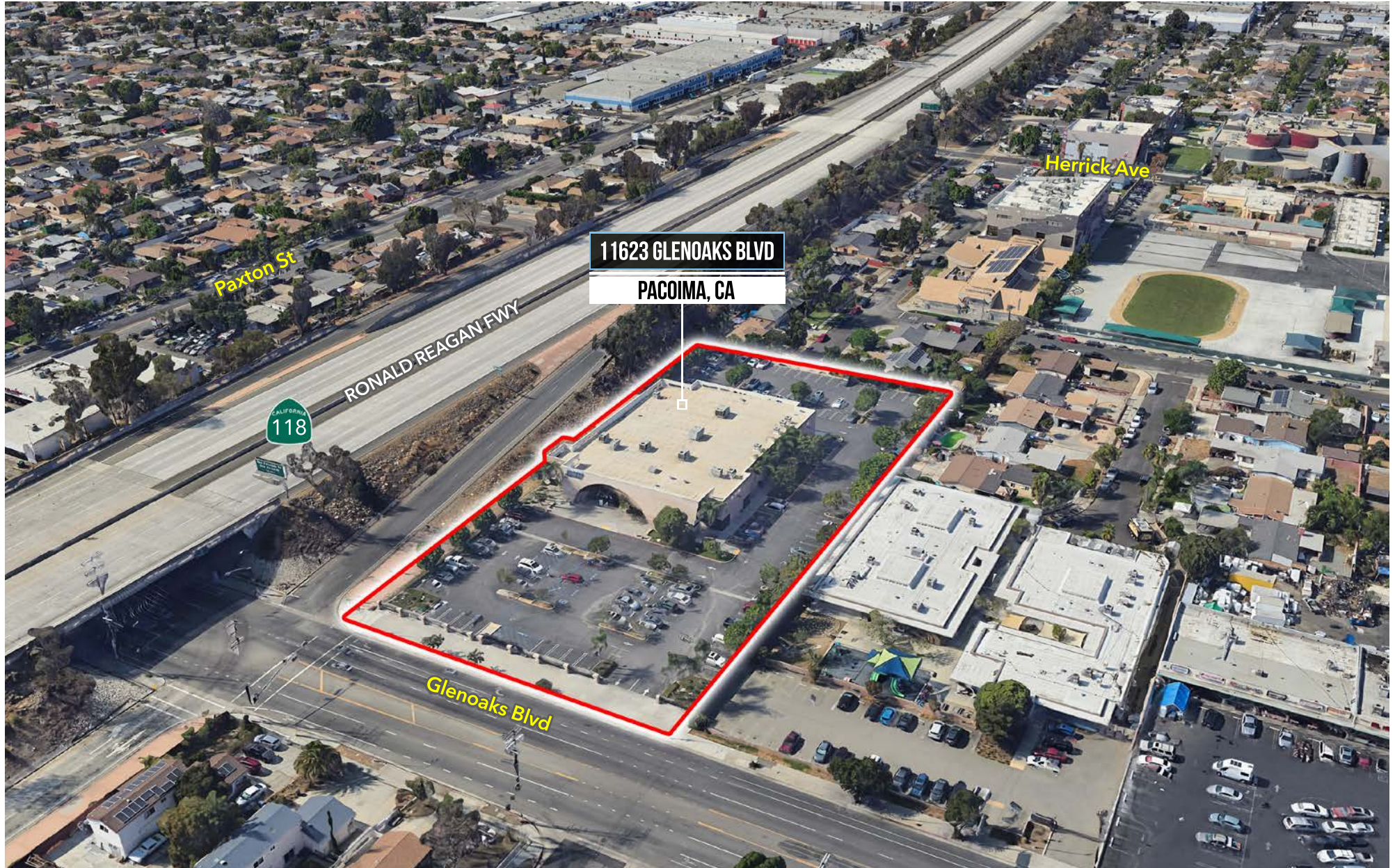
11623 GLENOAKS BLVD.  
PACOIMA, CA 91331





# 11623 GLENOAKS BLVD.

PACOIMA, CA 91331





# 11623 GLENOAKS BLVD.

PACOIMA, CA 91331

