



Trammell Crow  
Center

FLOORS  
16 OR 17

AVAILABLE FOR  
SUBLEASE

25,843 RSF  
AVAILABLE

# THE DETAILS

## BUILDING

### **Trammell Crow Center**

2001 Ross Avenue

Located in the heart of the Arts District between Ross Ave and Flora, and Olive St and Harwood St

## FLOORS

16 or 17

## AVAILABLE SPACE

25,843 RSF

## RATE

\$44.00+NNN (\$13.12)+E (\$1.72)

## TERM

Expires October 31, 2036

## NOTES

Furniture Available on Floors 16 or 17  
High-end Brand-new built out space

## CONTACT

### **Peery Wood**

214.505.4305

peery.wood@streamrealty.com

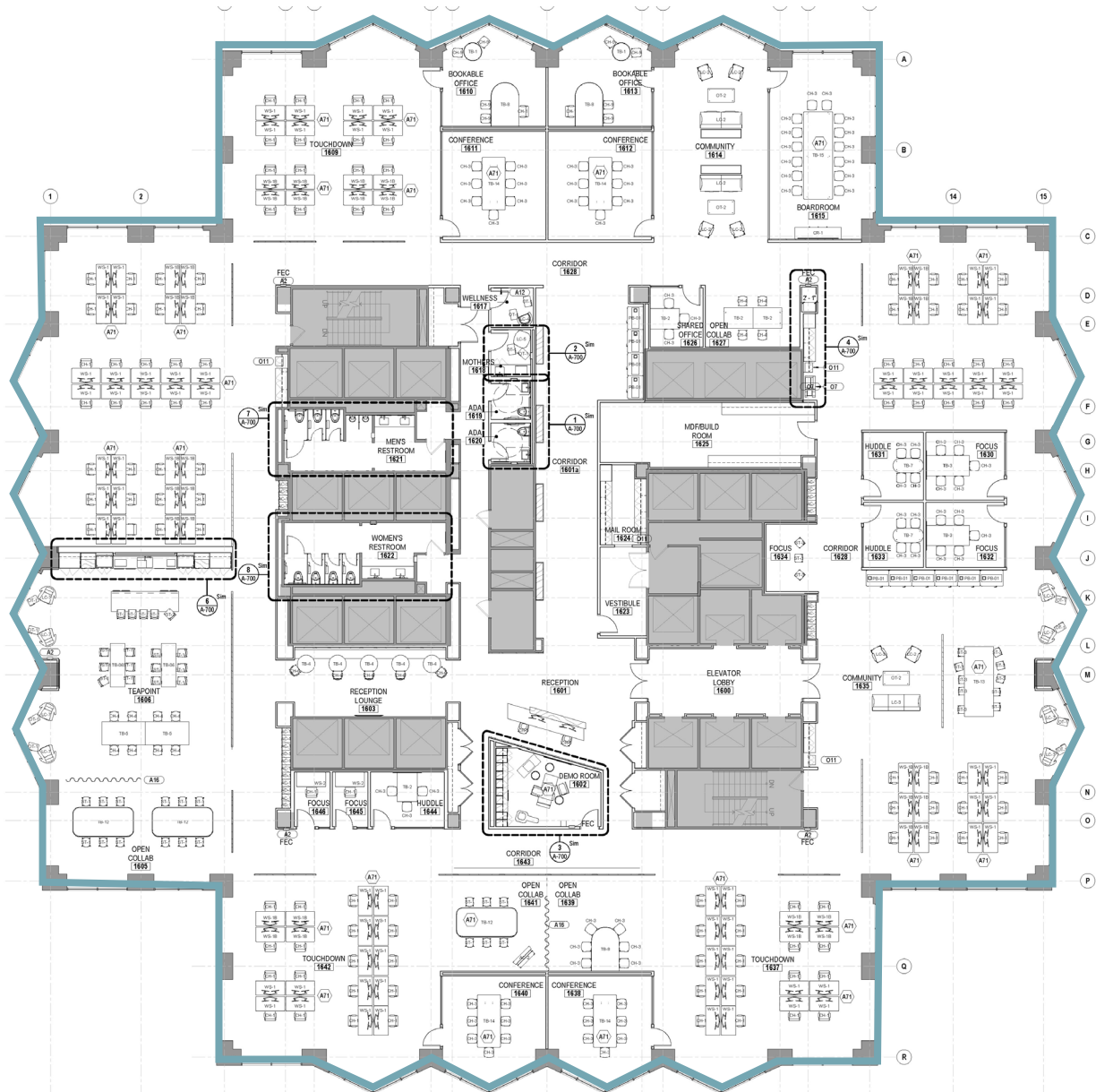
### **Dan Harris**

214.316.9649

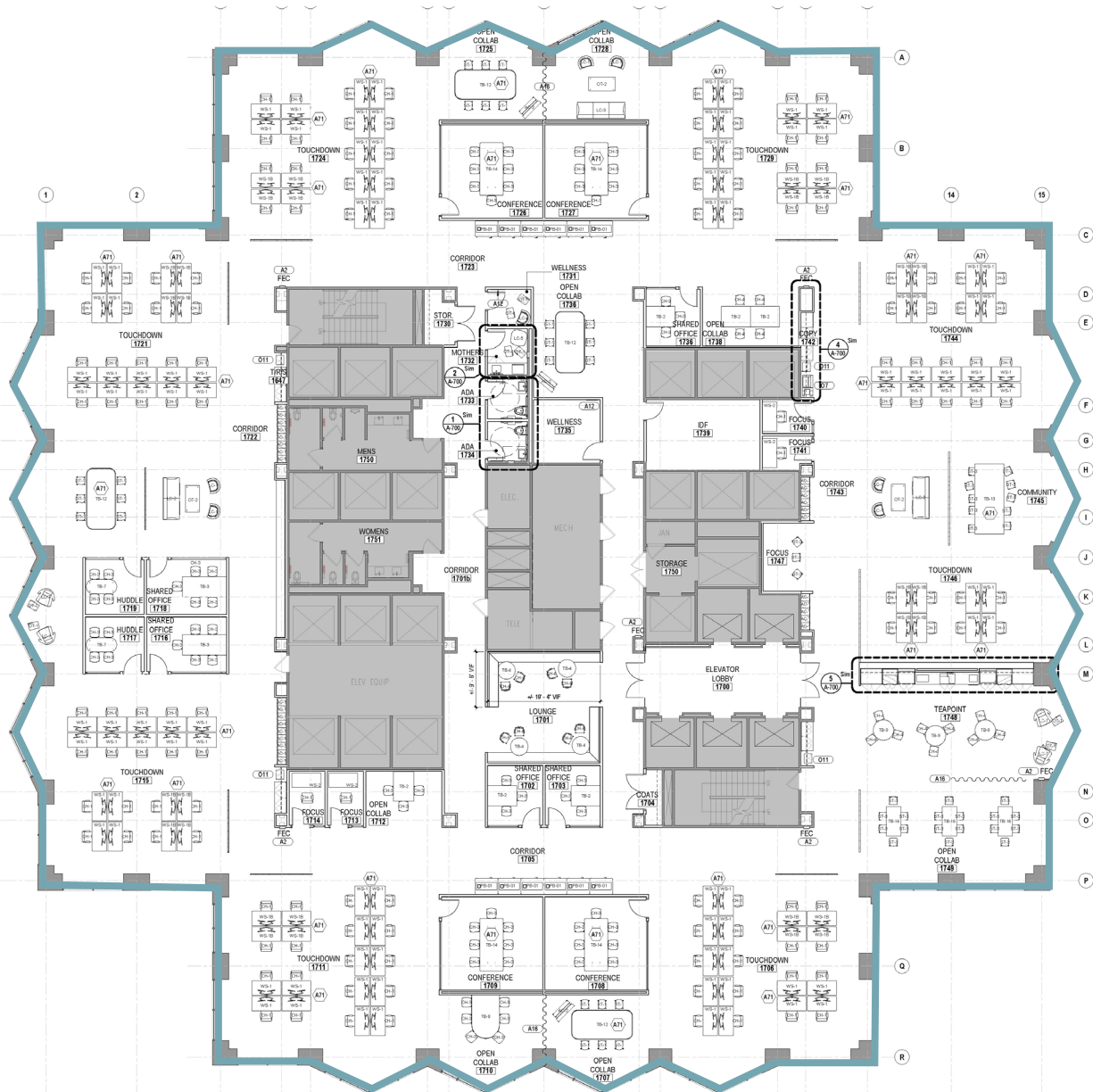
dan.harris@streamrealty.com



# FLOOR 16



# FLOOR 17





**Peery Wood**  
214.505.4305  
peery.wood@streamrealty.com

**Dan Harris**  
214.316.9649  
dan.harris@streamrealty.com

