



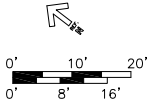
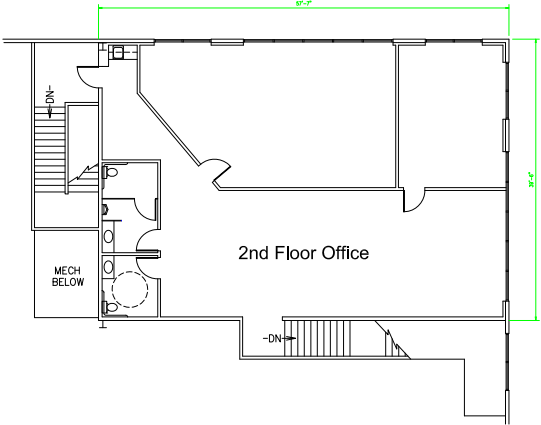
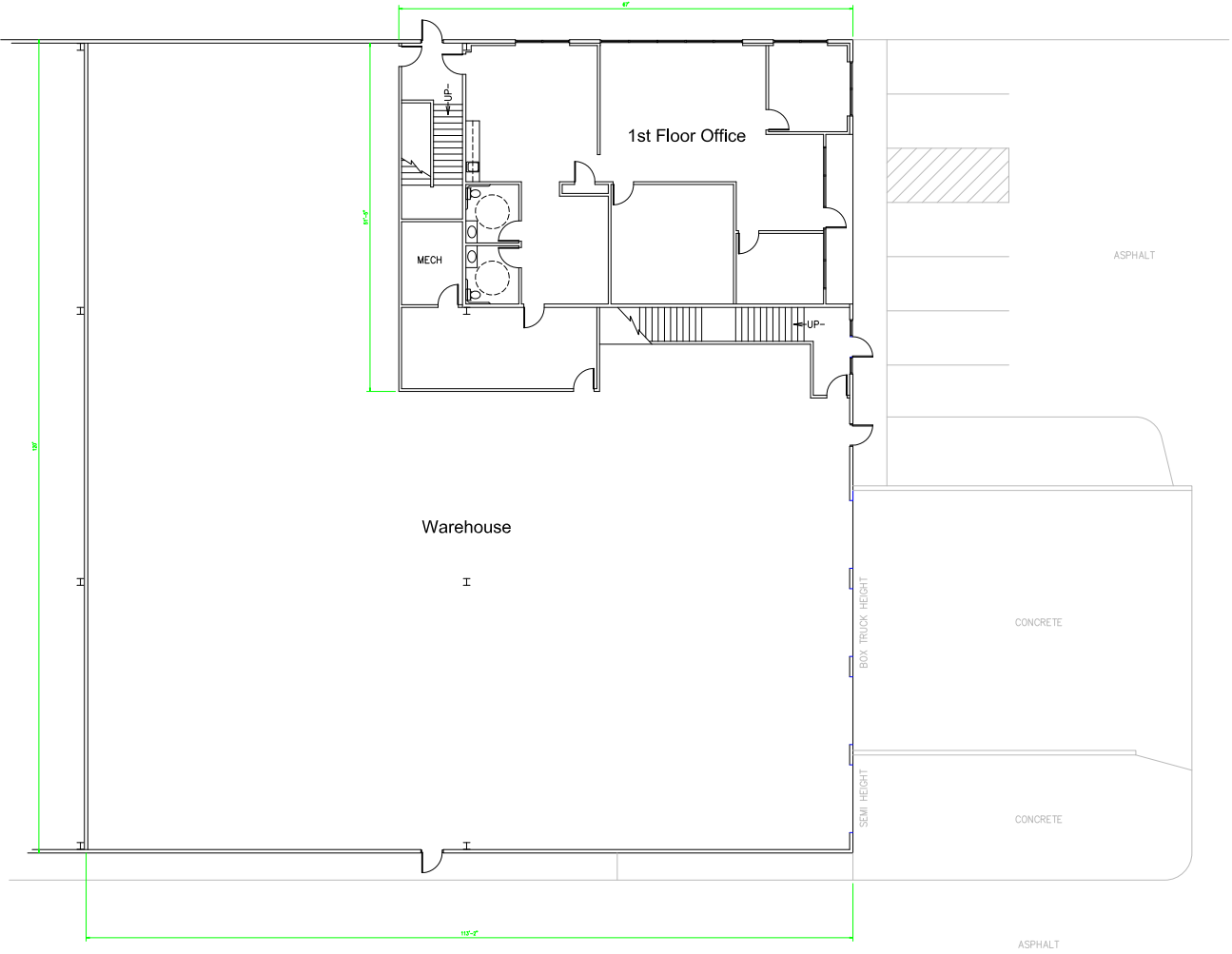
3517

FOR SUBLEASE | 3517 ENTERPRISE DR KANSAS CITY, MO 64129

15,790 SF • PRICE: **NEGOTIABLE** • AVAILABLE: **1/1/25** • TERM: **THROUGH 3/31/2029**

Elizabeth Loving • Director, Mohr Partners • (214) 273-8610 • ElizabethLoving@mohrpartners.com | Griffin Kibens • Mohr Partners • (314) 724-0084 • griffin.kibens@mohrpartners.com

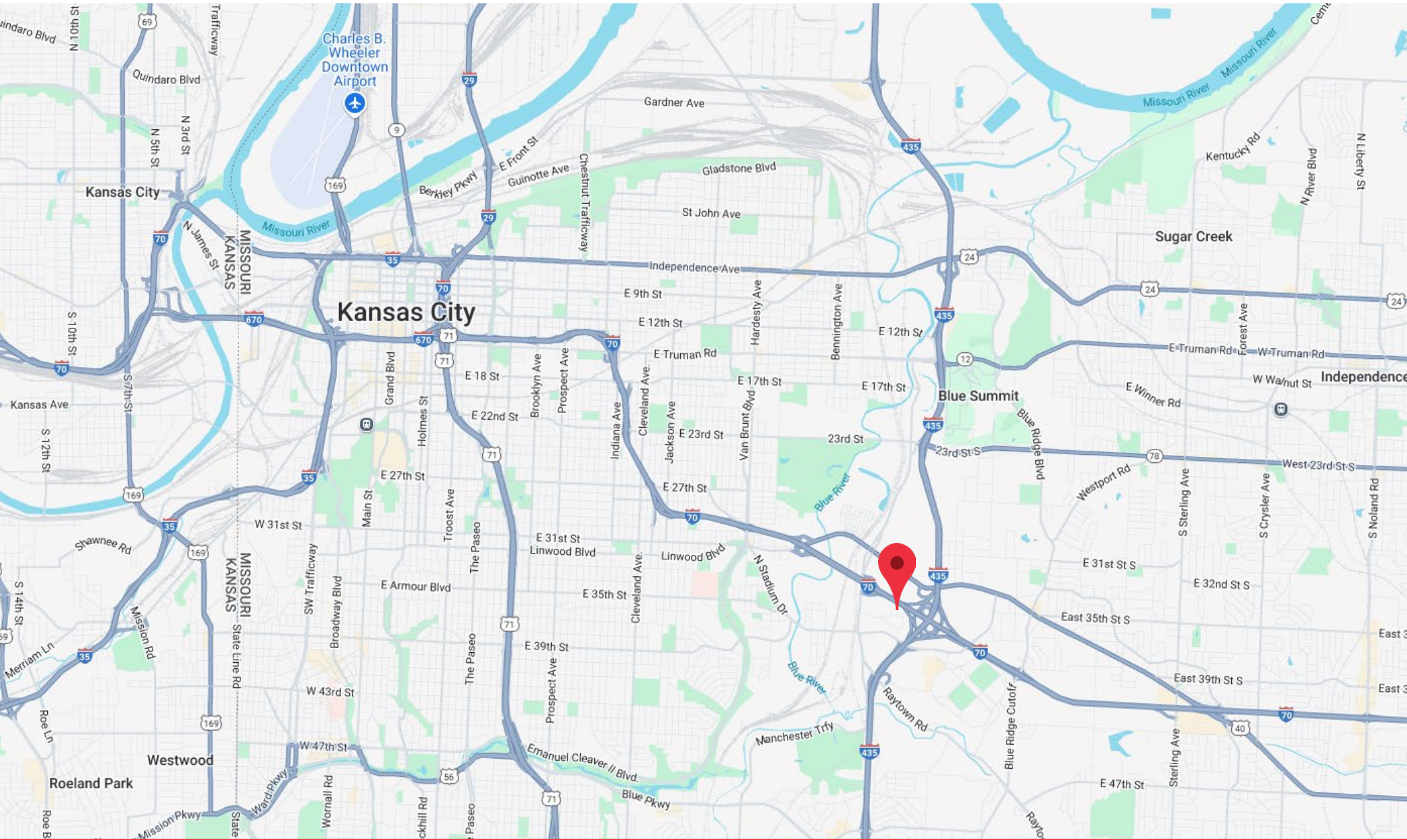
Floorplan



SPACE SUMMARY

LEASABLE AREA	15,790 sq. ft.
1st FLOOR OFFICE AREA	2,961 sq. ft.
2nd FLOOR OFFICE AREA	2,227 sq. ft.

Regional Map



3517



MOHRTM
PARTNERS

Elizabeth Loving • Director, Mohr Partners • (214) 273-8610 • ElizabethLoving@mohrpartners.com

Griffin Kibens • Mohr Partners • (314) 724-0084 • griffin.kibens@mohrpartners.com

This information has been secured from sources we believe to be reliable, but we make no representations or warranties, expressed or implied, as to the accuracy of the information. References to square footage or age are approximate. Buyer must verify the information and bears all risk for any inaccuracies. Any projections, opinions, assumptions or estimates used herein are for example purposes only and do not represent the current or future performance of the property.