

29011 Commerce Center Dr., Unit B

Valencia, CA 91355

For Lease 49,935 SF



Property Highlights

- Located in Valencia Commerce Center
- Ground & Dock High Loading
- 120' Truck Court
- New Office Area of 2,550 SF
- 28' Minimum Clearance
- Sprinkler System: 0.60/3,000 GPM

Property Overview

Unit B

Available Immediately

Available Date

49,935

Available SF

2,550

New Office SF

\$1.55

NNN

Lease Rate

\$0.36/

month

NNN

Expenses

7

(9'x10')

Truck High
Positions

1

(12'x14')

Ground Level
Doors

28'

Min
Clearance
Height

1,200 A;
277/480 V

3p 4w

Power

4

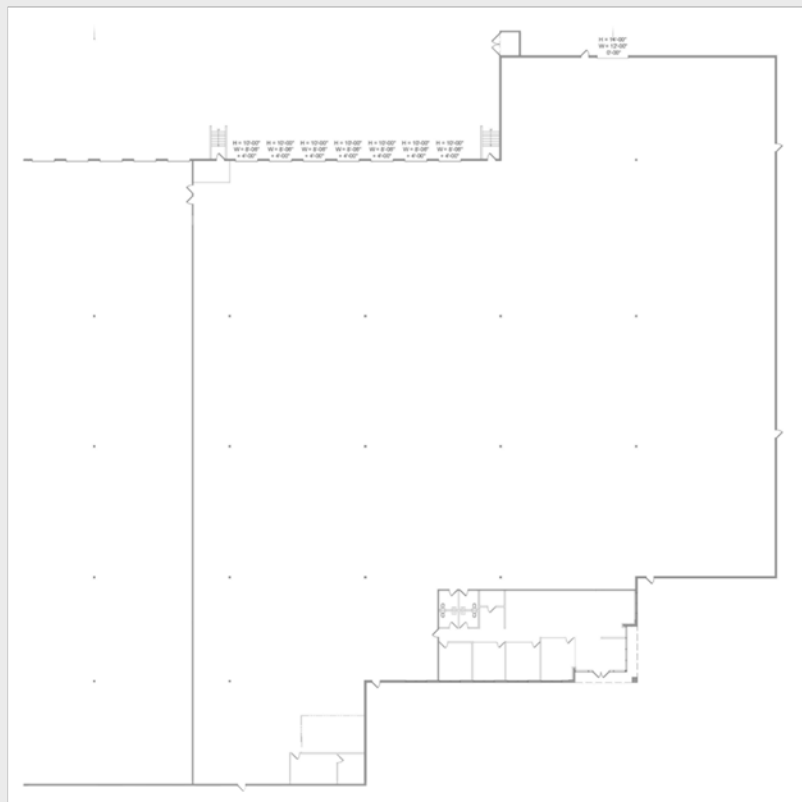
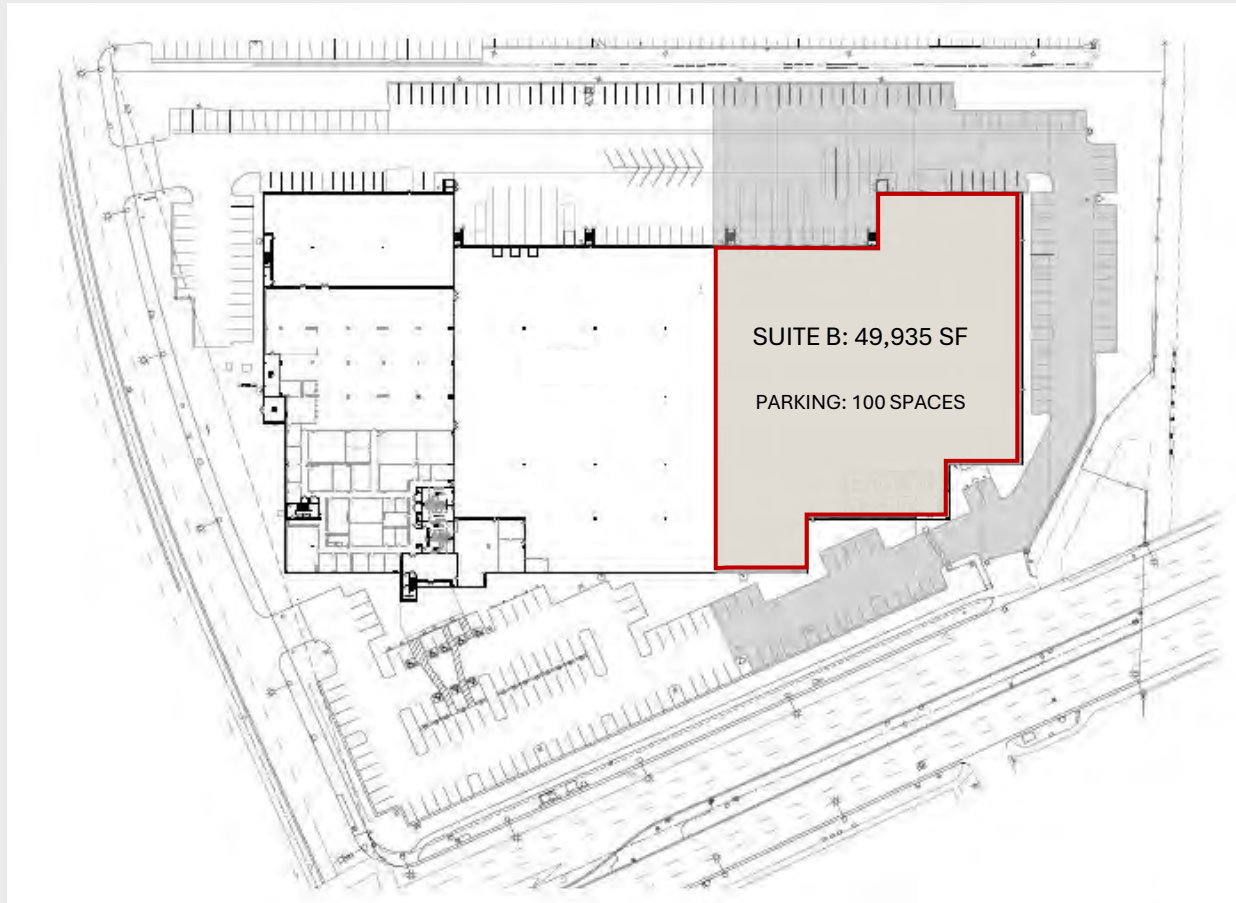
Restrooms

100

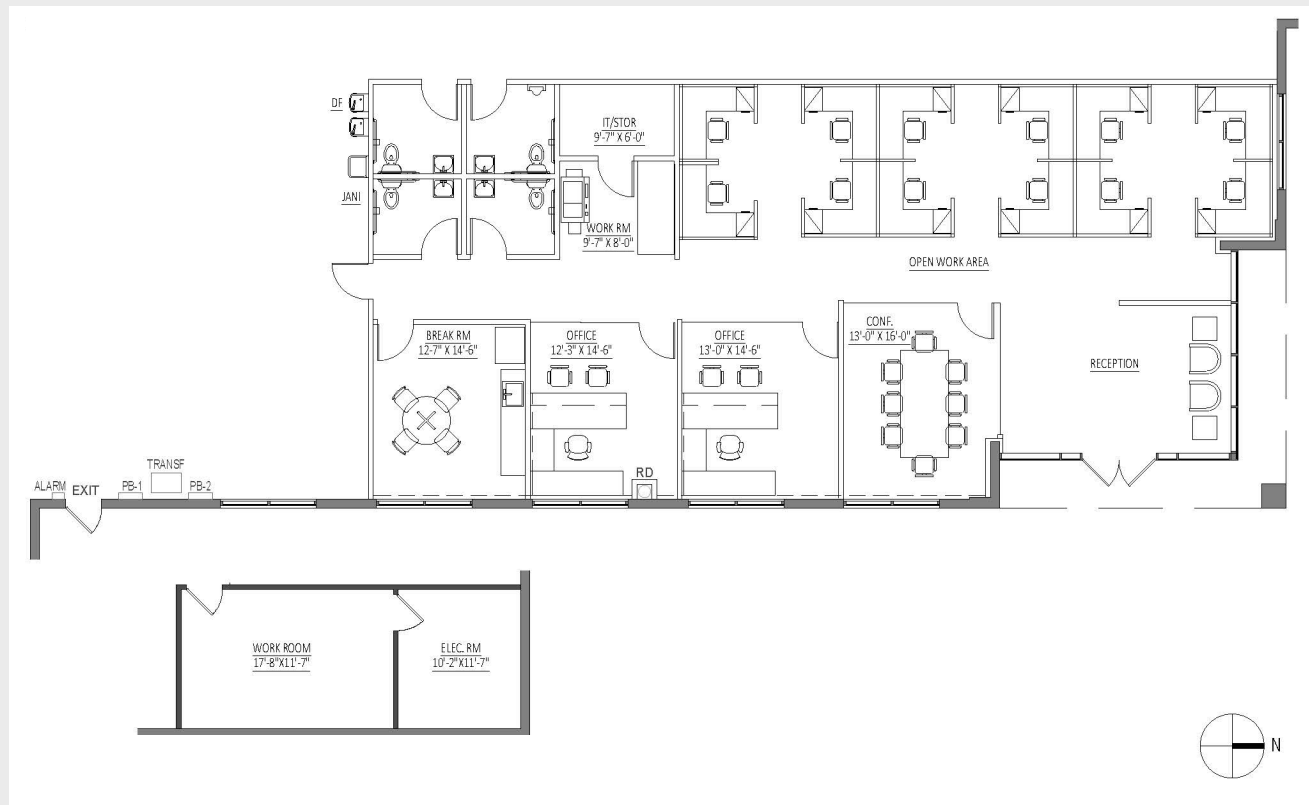
Parking
Spaces

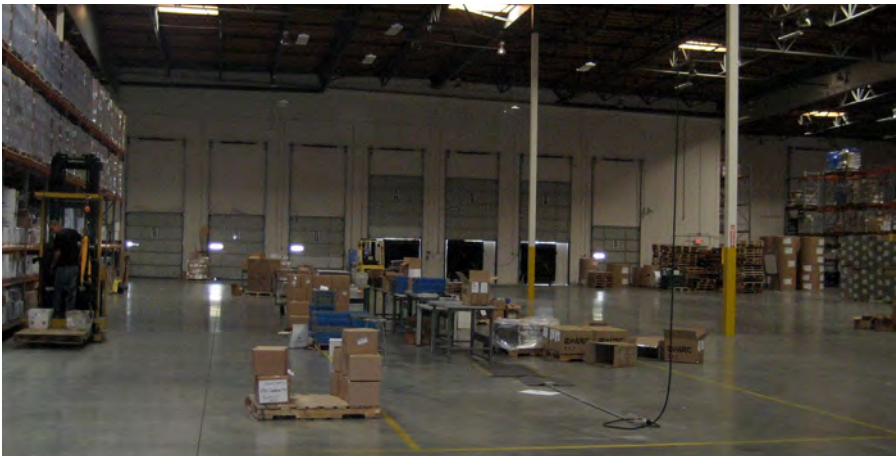


Warehouse Site Plan



New Office Floor Plan





Amenities Map

EATERIES

- | | | | |
|----|---------------------------|----|----------------------------|
| 1 | Baja Fresh | 28 | Little Caesars |
| 2 | Big Chicken | 29 | McDonald's |
| 3 | B.J.'s Restaurants | 30 | Mimi's Cafe |
| 4 | Black Bear Diner | 31 | Olive Garden |
| 5 | Cafe Rio | 32 | Orange Julius |
| 6 | California Fish Grill | 33 | Original Tommy's |
| 7 | California Pizza Kitchen | 34 | Panda Express |
| 8 | Capriotti's Sandwich Shop | 35 | Panera Bread |
| 9 | Carl's Jr. | 36 | Papa John's |
| 10 | Chick-fil-A | 37 | Peet's Coffee and Tea |
| 11 | Chipotle Mexican Grill | 38 | Pizza Hut |
| 12 | Corner Bakery Cafe | 39 | Popeyes Louisiana Kitchen |
| 13 | Dairy Queen | 40 | Red Lobster |
| 14 | Del Taco | 41 | Red Robin Gourmet Burgers |
| 15 | Denny's | 42 | Sbarro |
| 16 | Domino's Pizza | 43 | Starbucks |
| 17 | Donatos Pizzeria | 44 | Stonefire Grill |
| 18 | Dunkin' Donuts | 45 | Subway |
| 19 | Firehouse Subs | 46 | Sushi Story |
| 20 | Five Guys | 47 | Taco Bell |
| 21 | Hot Dog on a Stick | 48 | Teriyaki Madness |
| 22 | IHOP | 49 | The Cheesecake Factory |
| 23 | In-N-Out Burger | 50 | The Coffee Bean & Tea Leaf |
| 24 | Jack in the Box | 51 | The Habit Burger Grill |
| 25 | Jersey Mike's | 52 | The Stand |
| 26 | Jimmy John's | 53 | Wendy's |
| 27 | Johnny Rockets | 54 | Wingstop |

LODGING

- Best Western
- Courtyard by Marriott
- Embassy Suites Hotels
- Hampton Inn
- Hilton Garden Inn
- Holiday Inn Express
- Homewood Suites by Hilton
- Hyatt Regency
- Residence Inn by Marriott
- SpringHill Suites by Marriott

FITNESS

- Anytime Fitness
- Club Pilates
- CrossFit
- Gold's Gym
- LA Fitness
- Orangetheory Fitness
- StretchLab
- YMCA

ENTERTAINMENT

- Fun Factory
- Six Flags

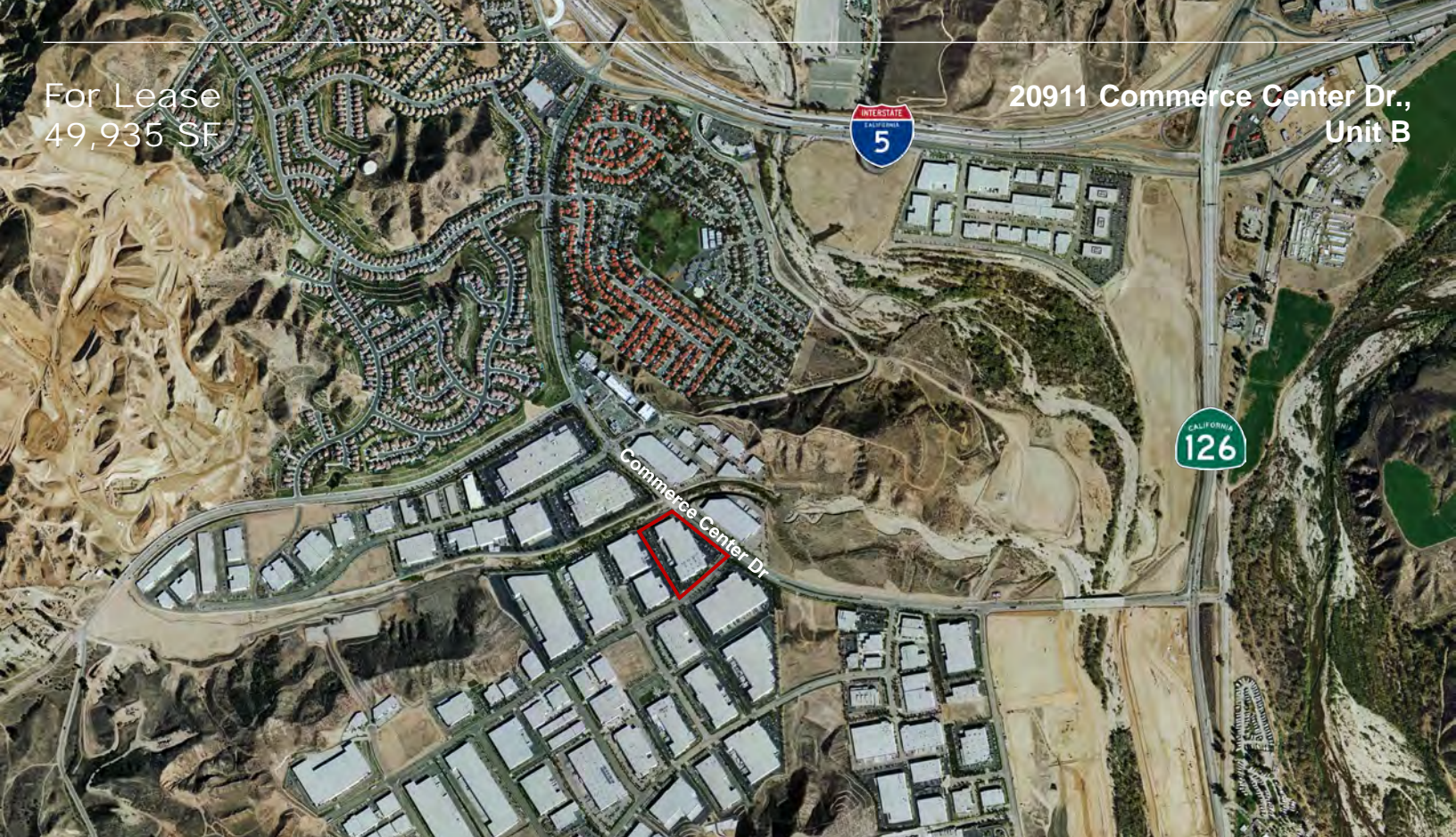
SHOPPING

- | | | | | | |
|----|---------------------------|----|------------------|----|--------------------------|
| 1 | American Eagle Outfitters | 17 | Home Depot | 33 | Sprouts Farmers Market |
| 2 | Anthropologie | 18 | HomeGoods | 34 | T.J. Maxx |
| 3 | Apple Retail Store | 19 | JCPenney | 35 | Target |
| 4 | BareMinerals | 20 | Kohl's | 36 | The Men's Wearhouse |
| 5 | Barnes and Noble | 21 | Lowe's | 37 | Tilly's |
| 6 | Bath & Body Works | 22 | Lululemon | 38 | Trader Joe's |
| 7 | Best Buy | 23 | Macy's | 39 | ULTA Beauty |
| 8 | Claire's | 24 | Macy's Backstage | 40 | Urban Outfitters |
| 9 | Cotton On | 25 | Nordstrom Rack | 41 | Vans |
| 10 | Dollar Tree | 26 | On Running | 42 | Victoria's Secret |
| 11 | Five Below | 27 | Pottery Barn | 43 | Vons |
| 12 | Foot Locker | 28 | Ralphs | 44 | Walmart USA |
| 13 | Forever 21 | 29 | Ross Stores | 45 | White House Black Market |
| 14 | Free People | 30 | Sephora | 46 | Whole Foods Market |
| 15 | H&M | 31 | SKECHERS | | |
| 16 | Hollister | 32 | Smart & Final | | |



For Lease
49,935 SF

29011 Commerce Center Dr.,
Unit B



29011 Commerce Center Dr., Unit B

Craig Peters

Vice Chairman

+1 818 907 4616

craig.peters@cbre.com

Lic. 00906542

Nick Casasante

Associate

+1 818 907 4737

nicholas.casasante@cbre.com

Lic. 02246788

© 2025 CBRE, Inc. All rights reserved. This information has been obtained from sources believed reliable but has not been verified for accuracy or completeness. CBRE, Inc. makes no guarantee, representation or warranty and accepts no responsibility or liability as to the accuracy, completeness, or reliability of the information contained herein. You should conduct a careful, independent investigation of the property and verify all information. Any reliance on this information is solely at your own risk. CBRE and the CBRE logo are service marks of CBRE, Inc. All other marks displayed on this document are the property of their respective owners, and the use of such marks does not imply any affiliation with or endorsement of CBRE. Photos herein are the property of their respective owners. Use of these images without the express written consent of the owner is prohibited.

CBRE