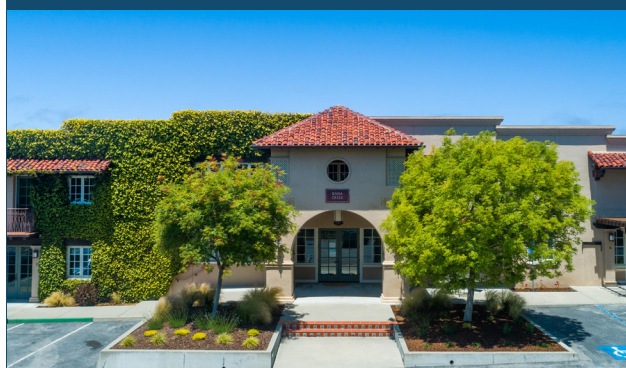




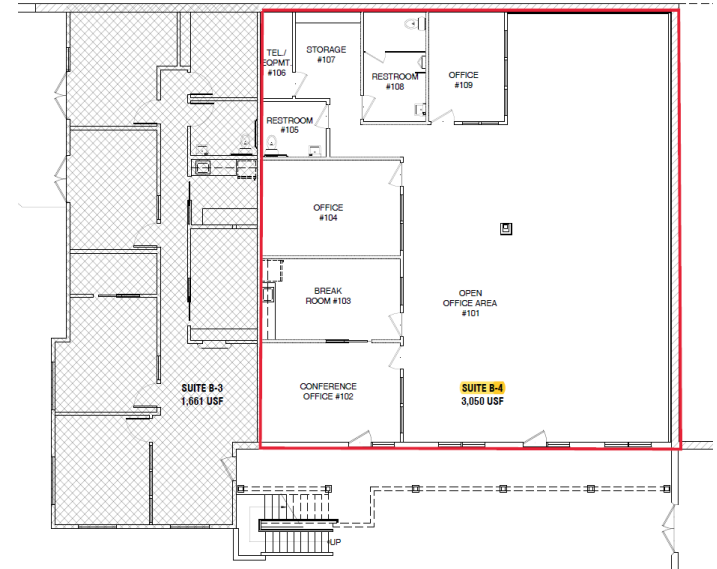
2,745 sq.ft. Office Space • Suite B-4



4,414 sq.ft Office Space • Suite C-3



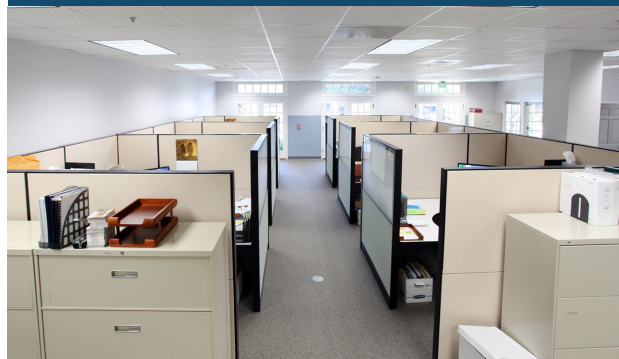
Spaces available in Monterey's Ryan Ranch Business Park. This property is located in a quiet, pastoral setting adjacent to open space with sweeping westerly views. Off Highway 68, convenient to Highway 1 and the Monterey Regional Airport.



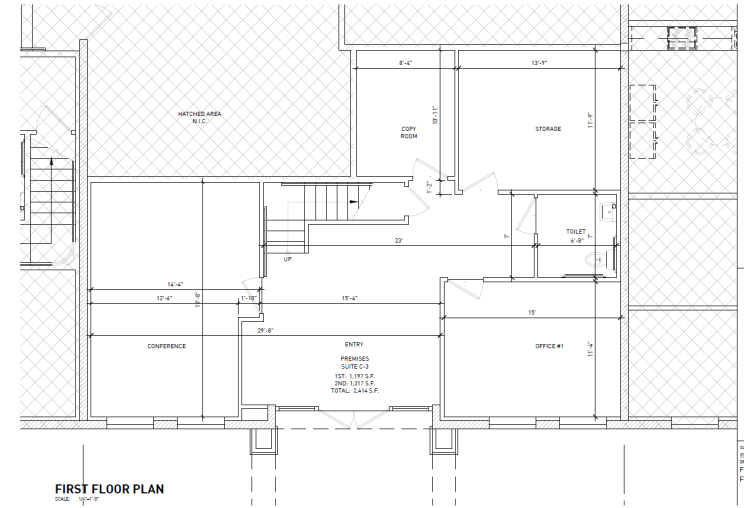
Kitchenette



Open Workflow Space



Ground floor space, featuring 2 offices, kitchenette, supply/copy room and en-suite restrooms. This office has an open floor plan with natural light. Adjacent to open space with pastoral views. Great location for access to Monterey Peninsula and Salinas Valley.



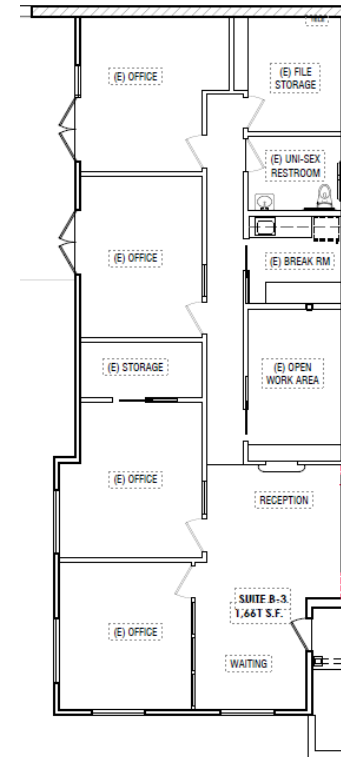
6 Oversized Private Offices



French Doors & Wood Flooring



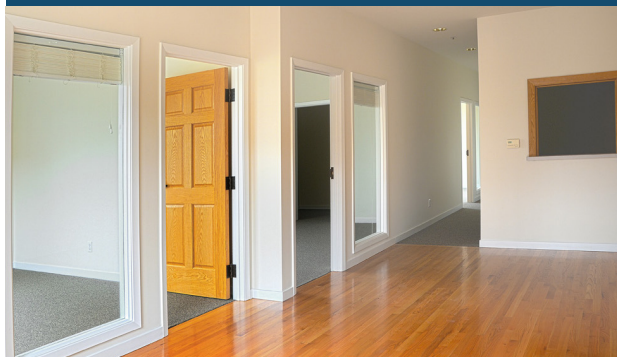
This high-end office space features 6 oversized private offices on two stories and is situated adjacent to open space with pastoral views. Includes a kitchenette, conference room, lobby, and supply/copy room. Design features include a Mediterranean style arched entry way, french doors, and wood flooring.



4 Private Offices



Ground Floor, next to open space



This 1,661 sf high-end office space features 4 private offices and is situated on the ground floor next to peaceful open space. Includes a kitchen, conference room, lobby, supply/copy room and en-suite restroom. Conveniently located off Highway 68 in the Ryan Ranch Business Park.