

## LAND FOR SALE

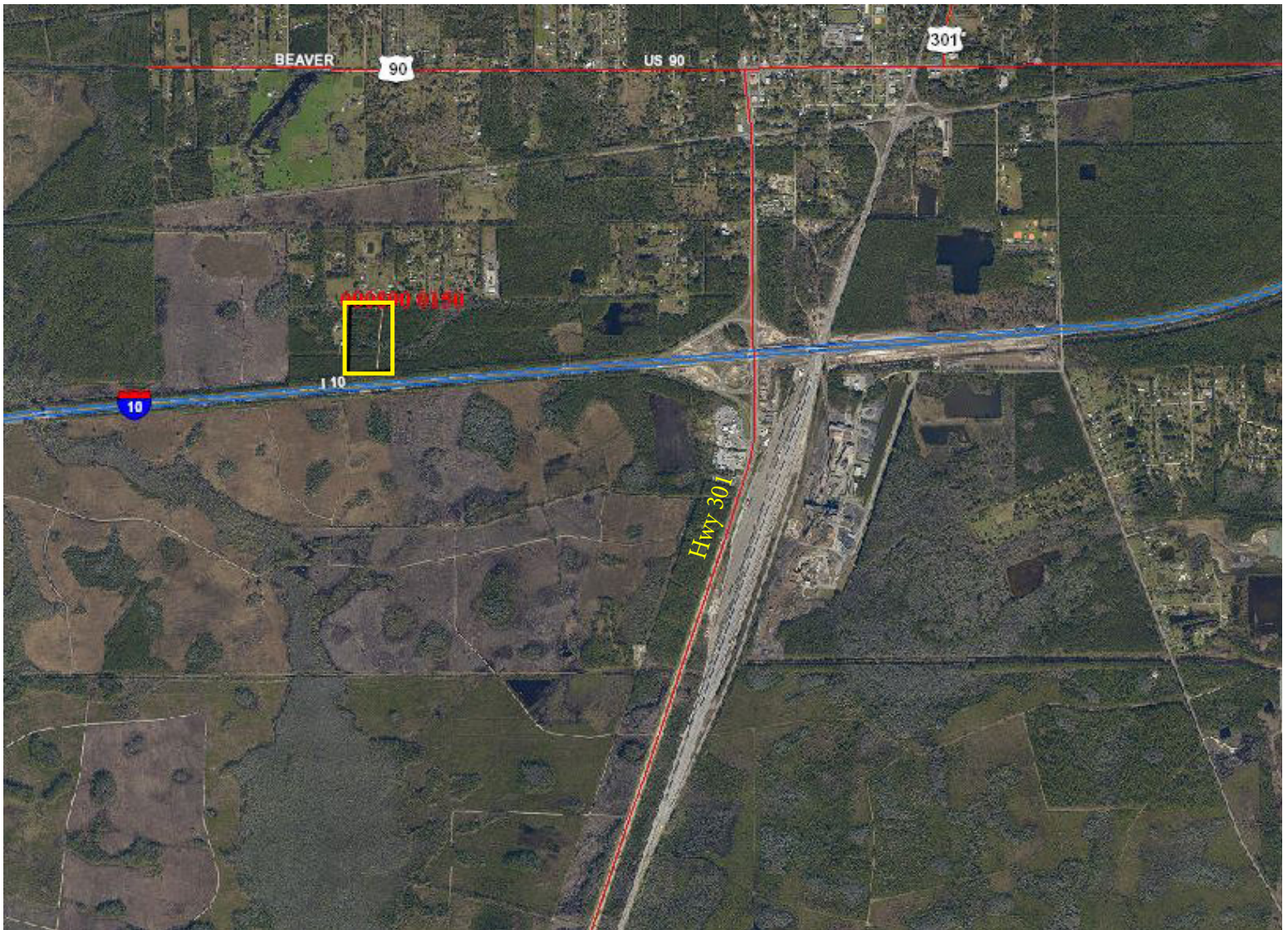
# On Interstate 10 Just West of Jacksonville Florida

New Brandy Branch Road @ Baldwin  
Exit on I-10



**MARKETMASTERS**  
OF THE SOUTHEAST

- Large parcel totaling 20.0± acres
- Zoned Agriculture
- Good visibility from I-10
- Near a fast growing I-10 Exit
- Baldwin exit with lots of semi truck traffic
- Large railroad yard at exit





## LAND FOR SALE

# On Interstate 10 Just West of Jacksonville Florida

New Brandy Branch Road @ Baldwin  
Exit on I-10



**MARKETMASTERS**  
OF THE SOUTHEAST



**MARKETMASTERS**  
OF THE SOUTHEAST

1890 Kingsley Ave, Suite 102  
Orange Park, FL 32073  
[www.marketmastersSE.com](http://www.marketmastersSE.com)

Charlie Revels, Agent  
Cell: 904-945-6073  
[cfrevels@mmsejax.com](mailto:cfrevels@mmsejax.com)

Property Info  
County: DUVAL



## LAND FOR SALE

# On Interstate 10 Just West of Jacksonville Florida

New Brandy Branch Road @ Baldwin  
Exit on I-10



**MARKETMASTERS**  
OF THE SOUTHEAST

