

5 Acres Beside Smithfields Country Club – Easley, SC

A rare opportunity to own premium land in one of Upstate South Carolina's most desirable locations.

Location, Location, Location

Nestled directly adjacent to **Smithfields Country Club**, this 5-acre parcel combines the prestige of country club living with the convenience of Easley's rapid growth corridor. You're just minutes from **downtown Easley**, 20 minutes from **Greenville**, and 18 minutes from **Clemson University**.

Highlights & Selling Points

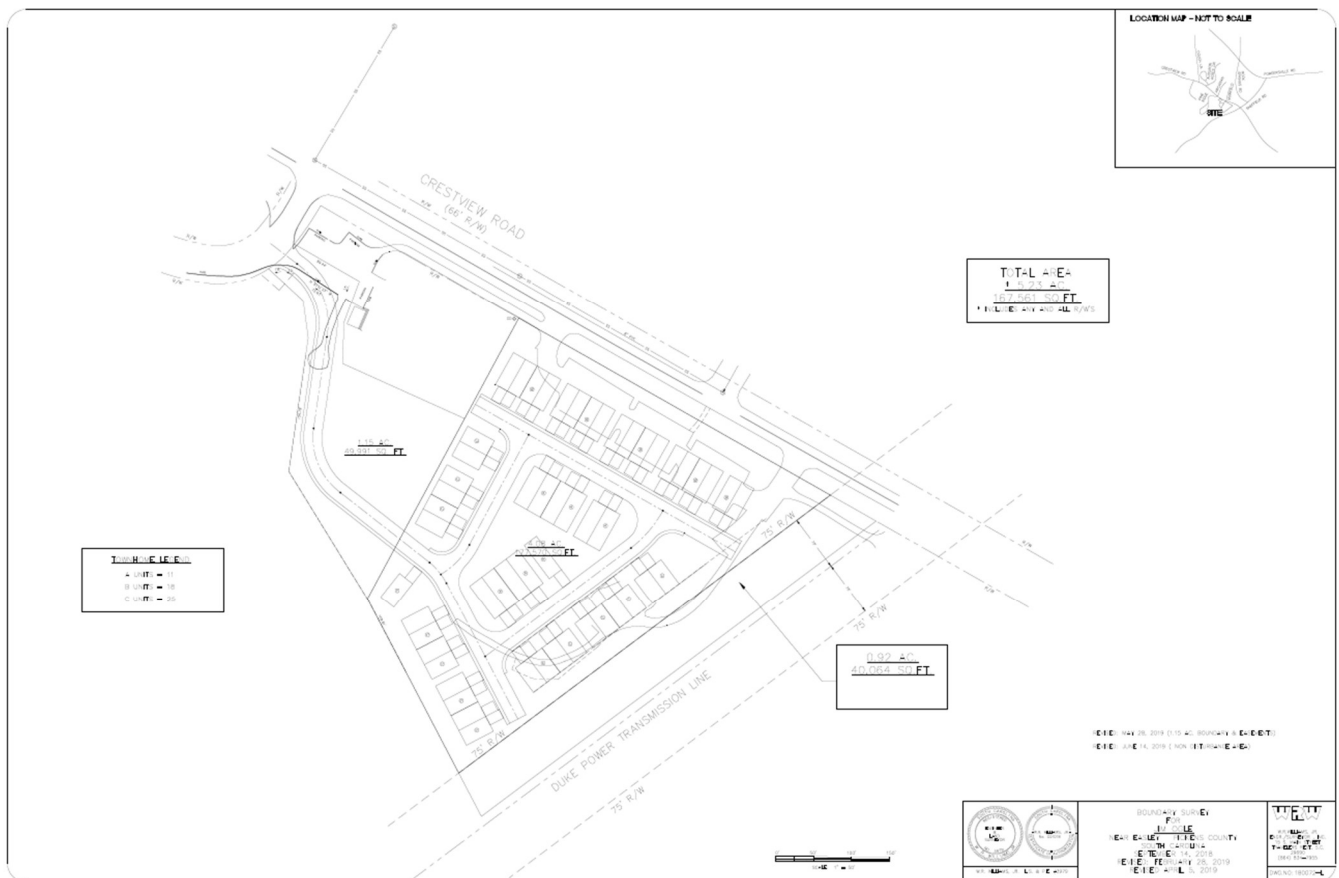
- **Prestigious Setting:** Bordering the lush fairways of Smithfields, offering potential views of manicured greens and serene landscapes.
- **Development Potential:** Perfect for a **private estate**, a **small luxury home enclave**, or an **investment hold** as land values continue to rise rapidly in Easley.
- **Growing Market:** Easley is one of the fastest-appreciating real estate markets in Upstate SC, fueled by proximity to Greenville and Clemson.
- **Utilities & Access:** Excellent access to major roadways, with nearby utilities to support future residential development.
- **Lifestyle Appeal:** Golf, tennis, swimming, and social amenities next door at Smithfields Country Club, plus shopping, schools, and recreation just minutes away.

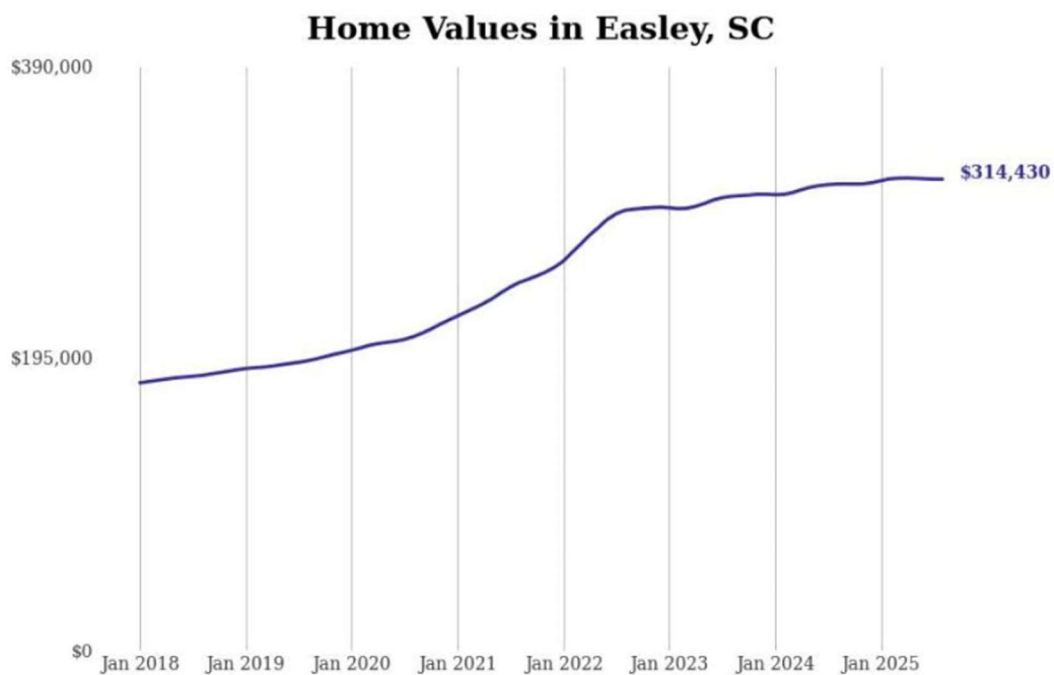
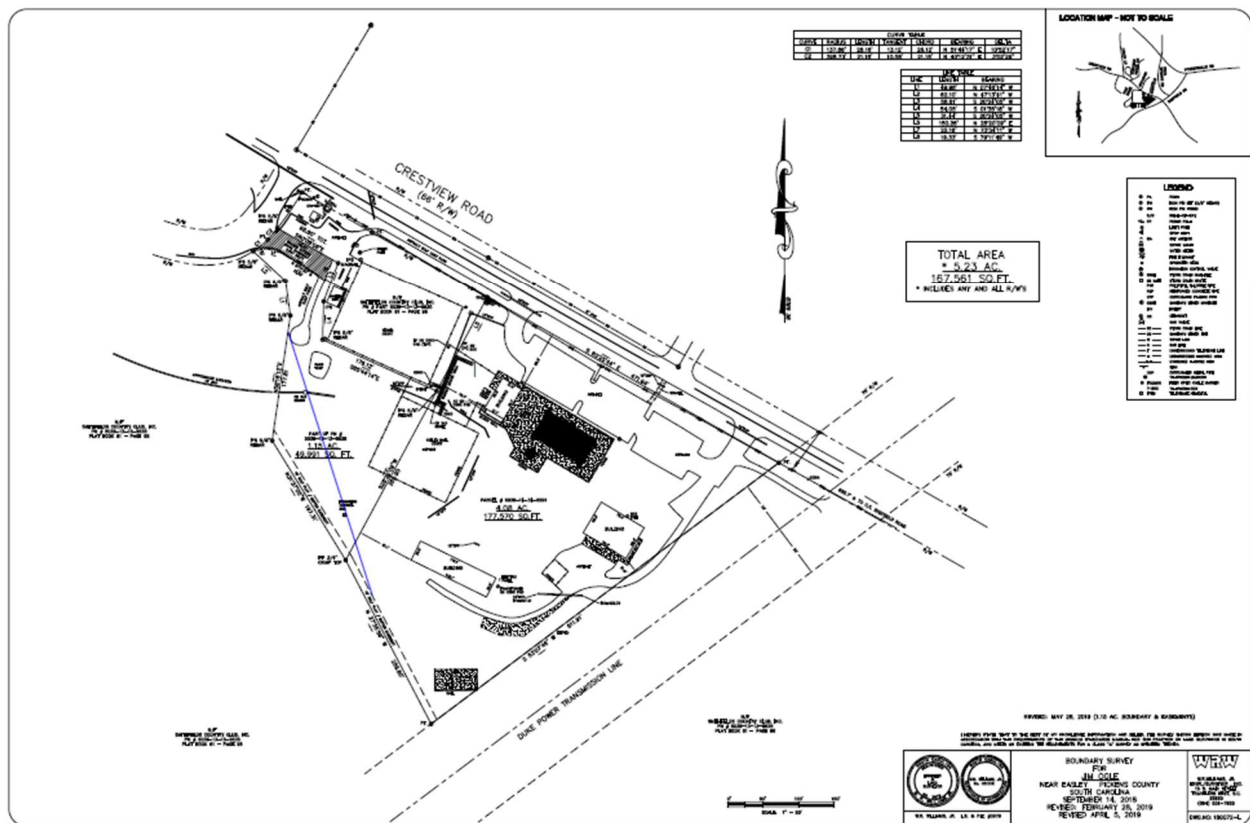
Ideal Buyer Profiles

- **Luxury Home Builder / Developer:** Subdivide into 3–5 estate-style lots next to the country club for premium resale values.
- **Private Estate Owner:** Build your dream home on acreage with instant access to golf, recreation, and a high-end community.
- **Investor:** Land in Easley is appreciating rapidly; owning 5 contiguous acres in this location is a long-term value play.

The Market Advantage

Homes near Smithfields Country Club frequently sell at a premium, and Easley's land values have been climbing due to **low inventory and high demand**. This tract offers a combination of **location, scale, and prestige** that rarely comes available.





Source: Zillow. Data represents monthly typical home value

#10. Easley, SC

- 1-year price change: +\$3,289 (+1.1%)
- 5-year price change: +\$105,134 (+50.2%)
- Typical home value: \$314,430 (#10 most expensive city in metro)