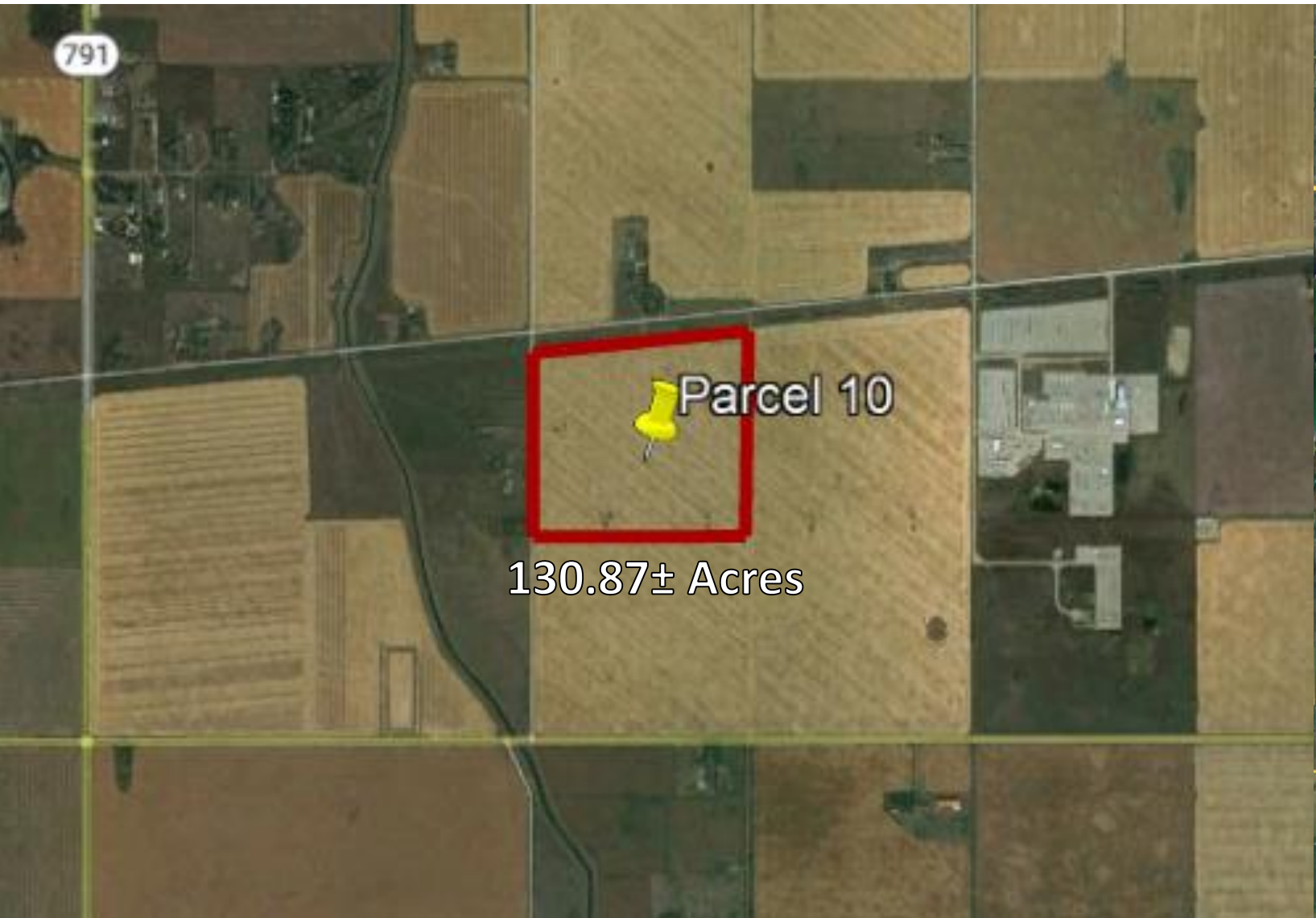


# Land for Sale



**Rethinking Commercial Real Estate**



This brochure is intended for information purposes only and should not be relied upon for accurate factual information by the recipient hereof. The information contained herein is based on information which Prestige Commercial deems reliable. However, Prestige Commercial assumes no responsibility for the degree of accuracy such information, nor does Prestige Commercial represent or warrant information contained herein. Recipient should conduct their own investigation to determine the accuracy of information contained herein. The information herein is subject to change without notice.

**Roger Ledene,** Associate Broker

**403-607-5811**

[roger@prestigecommercial.ca](mailto:roger@prestigecommercial.ca)

# Rocky View County, AB – 130.87 Acres



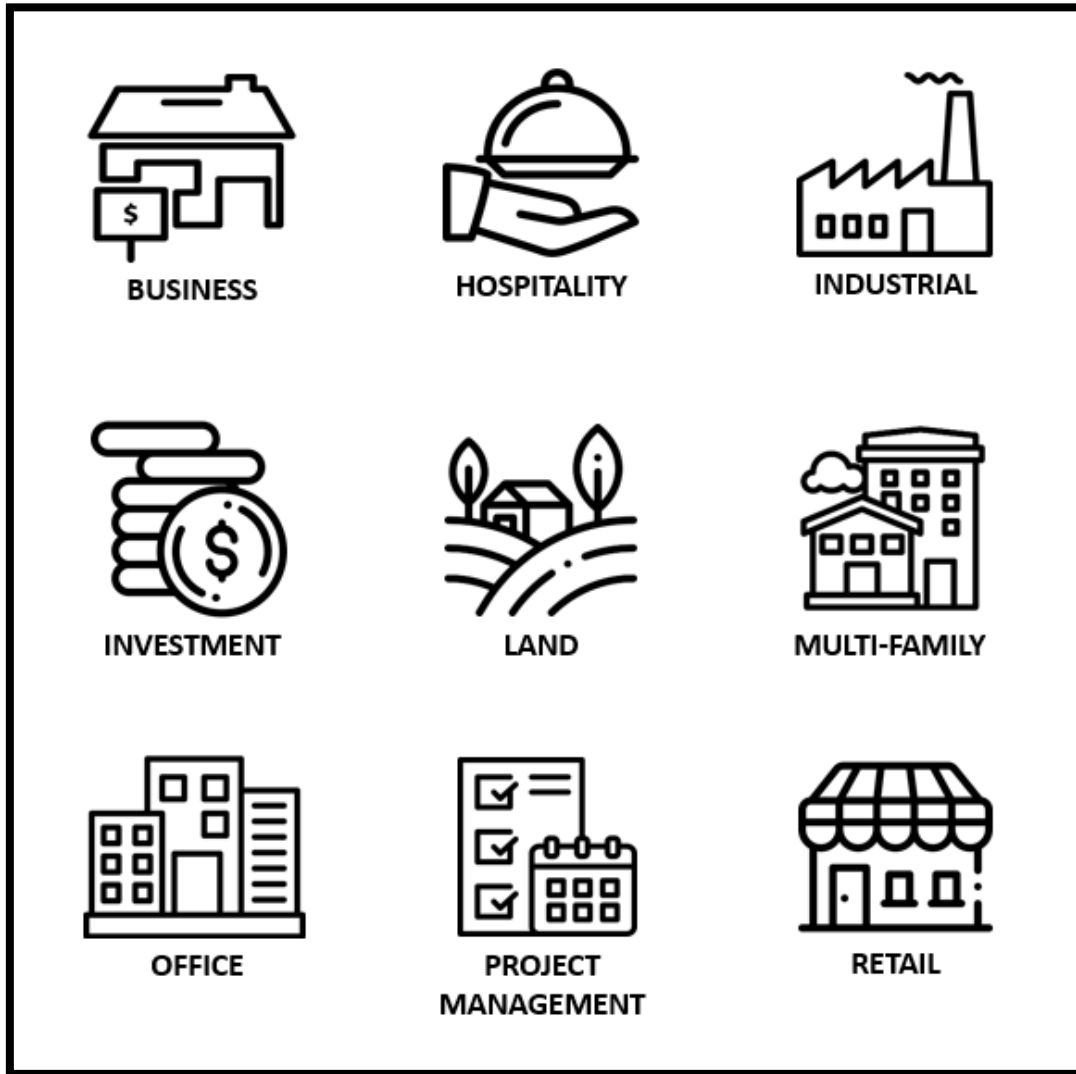
<b>Address:</b>	Township Road 233 and Range Road 275, Rocky View County, AB
<b>Zoning:</b>	Agricultural (A-GEN)
<b>Total Size:</b>	130.87± Acres
<b>Asking Price:</b>	\$7,169,850 \$55,000/Acre approx.

- This 131-acre parcel of land is located in Rocky View County, southwest of Langdon at the intersection of Township Road 233 and Range Road 275.
- It is presently classified under Agricultural zoning, providing various potential uses and development opportunities.
- Located adjacent to East Rockyview Wastewater Transmission main line.

**Roger Ledene,** Associate Broker

**403-607-5811**

[roger@prestigecommercial.ca](mailto:roger@prestigecommercial.ca)



**11450 – 29<sup>th</sup> Street SE, Unit 201  
Calgary, Alberta T2Z 3V5**

This brochure is intended for information purposes only and should not be relied upon for accurate factual information by the recipient hereof. The information contained herein is based on information which Prestige Commercial deems reliable. However, Prestige Commercial assumes no responsibility for the degree of accuracy such information, nor does Prestige Commercial represent or warrant information contained herein. Recipient should conduct their own investigation to determine the accuracy of information contained herein. The information herein is subject to change without notice.

**Roger Ledene,** Associate Broker

**403-607-5811**

[roger@prestigecommercial.ca](mailto:roger@prestigecommercial.ca)