

±10,363 SF FOR LEASE - DIVISIBLE TO ±5,363 SF

RENOVATIONS UNDERWAY

4104 E LA PALMA AVENUE, ANAHEIM, CA



PROPERTY FEATURES

- » 10,363 SF - Divisible to ±5,363 SF
- » POL ±26,000 SF Building
- » ±300 SF Office (Newly Built)
- » Fenced Yard
- » Sprinklered
- » 600 Amps Power (277/480 Volts)
- » 17' Clear
- » 2 Oversized GL (12 x 14)
- » Anaheim Canyon Location

**Please note that the 4100 building is being subdivided and the 4104 address is currently in the permitting process.*

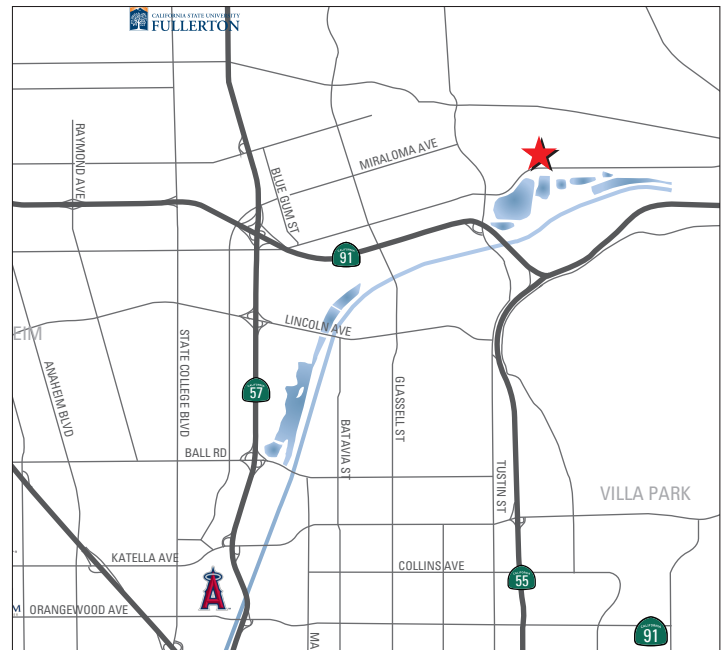
CONTACT US

RICK TURNER

SVP/Principal
949.724.4754
rturner@lee-associates.com
DRE # 01871353

KYLE ADAMS

Associate
949.724.4755
kadams@lee-associates.com
DRE # 02141268



DISCLAIMER: The information contained herein has been obtained from the property owner or other third party and is provided to you without verification as to accuracy. We (Lee & Associates, its brokers, employees, agents, principals, officers, directors and affiliates) make no warranty or representation regarding the information, property, or transaction. You and your attorneys, advisors and consultants should conduct your own investigation of the property and transaction.

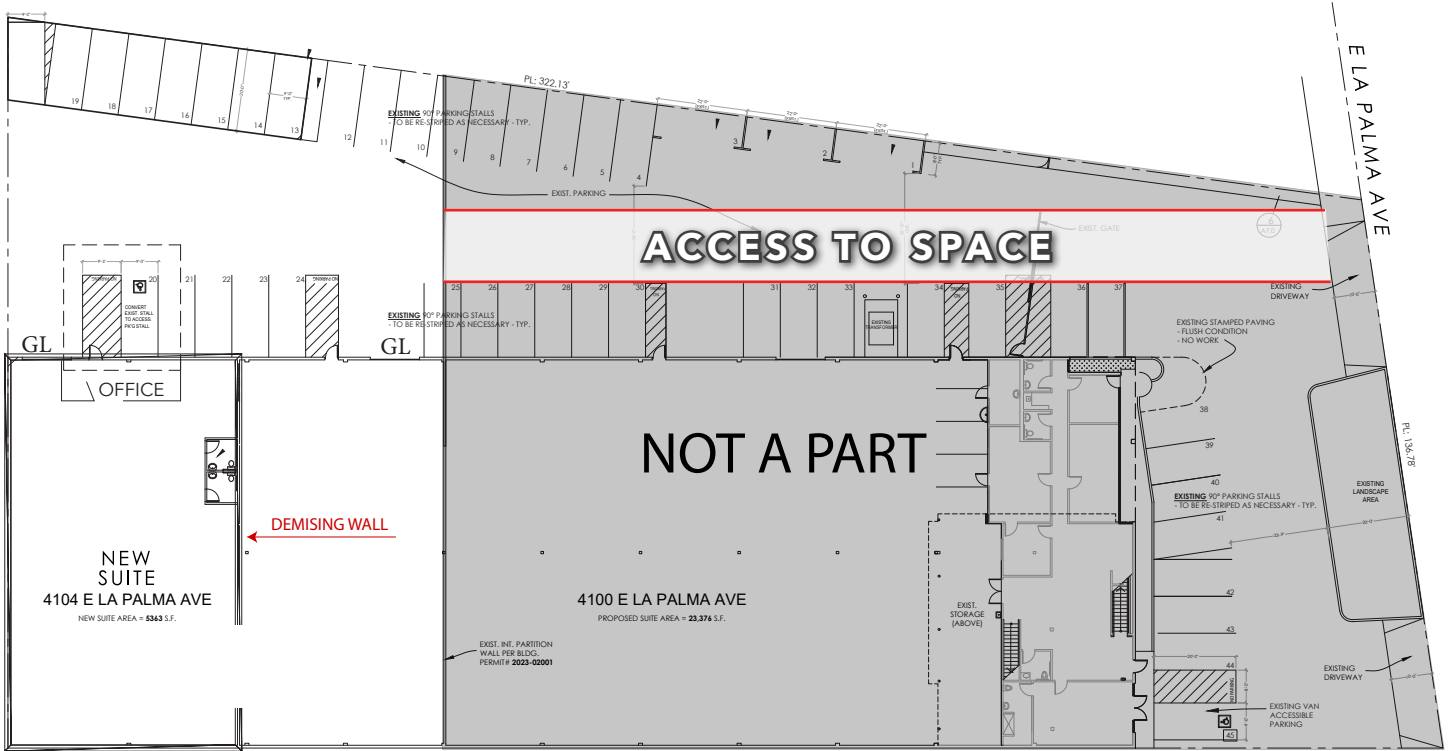
±10,363 SF FOR LEASE - DIVISIBLE TO ±5,363 SF

RENOVATIONS UNDERWAY

4104 E LA PALMA AVENUE, ANAHEIM, CA



RENDERING OF PROPERTY AFTER RENOVATION



■ = NOT A PART

AERIAL PHOTO



CONTACT US

RICK TURNER

SVP/Principal
 949.724.4754
 rturner@lee-associates.com
 DRE # 01871353

KYLE ADAMS

Associate
 949.724.4755
 kadams@lee-associates.com
 DRE # 02141268



DISCLAIMER: The information contained herein has been obtained from the property owner or other third party and is provided to you without verification as to accuracy. We (Lee & Associates, its brokers, employees, agents, principals, officers, directors and affiliates) make no warranty or representation regarding the information, property, or transaction. You and your attorneys, advisors and consultants should conduct your own investigation of the property and transaction.