

1100 West Shaw Avenue • Fresno, California



# AVAILABLE FOR LEASE

*Approximately ±700 & ±1,010 Square Feet*

- FREE Reserved Covered Parking
- WALK TO FIG GARDEN VILLAGE
- Close Proximity To Freeway 41 & 99
- Competitive Full Service Rents
- Local Owners



## ROBERT ELLIS LEASING AND INVESTMENT, INC.

**ROBERT ELLIS**  
PHONE: 559/228-8900  
DRE LICENSE #00870649

**MITCH WEIBERT**  
PHONE: 559/355-0841  
DRE LICENSE #02198339

7502 NORTH COLONIAL AVENUE, SUITE 101 • FRESNO, CALIFORNIA 93711  
rellis@reli1.com • mweibert@reli1.com • www.reli1.com

This statement with the information it contains is given with the understanding that all negotiations relating to the purchase, renting or leasing of the property described above shall be conducted through this office. This above information, while not guaranteed, has been secured from sources we believe to be reliable.

1100 West Shaw Avenue • Fresno, California



## PROPERTY INFORMATION

**Location:** Property is situated on the West Shaw Corridor at the northwest corner of West Shaw and Harrison Avenues within walking distance of Fig Garden Shopping Center, restaurants and banks.

**Description:** Single story building, lots of windows, mature landscaping, abundant parking and very well maintained.

**Space Available:**

<u>Suite</u>	<u>Rentable Sq. Ft. *</u>	<u>Rent Per Month</u>	<u>Description</u>
#118	±1,010	\$1,710.00	4 Private Offices, Conference Room With Sink, Reception Area
#132	±700	\$1,225.00	2 Private Offices, Reception Area

ALL UTILITIES AND JANITORIAL SERVICE INCLUDED

*\* Square footage includes prorata share of common area.*

1st Year

**Lease Rate:** \$1.69 - \$1.75 / sq. ft. - Full Service

**Terms:** Negotiable

**Zoning:** R-P (residential professional office)

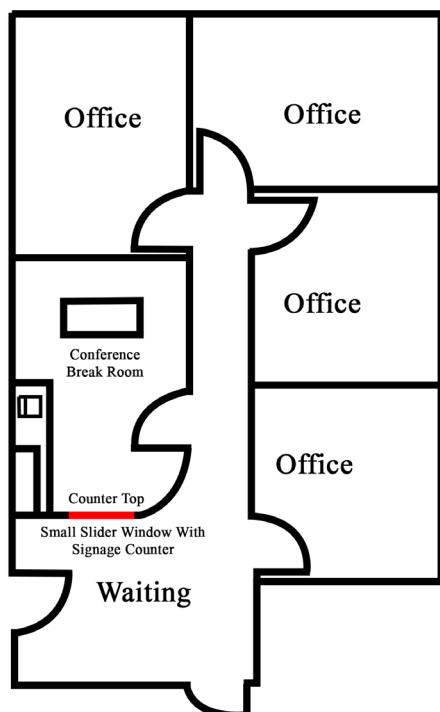
**PARKING:** 1 FREE COVERED RESERVED STALL PER SUITE, INCLUDED IN RENT

1100 West Shaw Avenue • Fresno, California

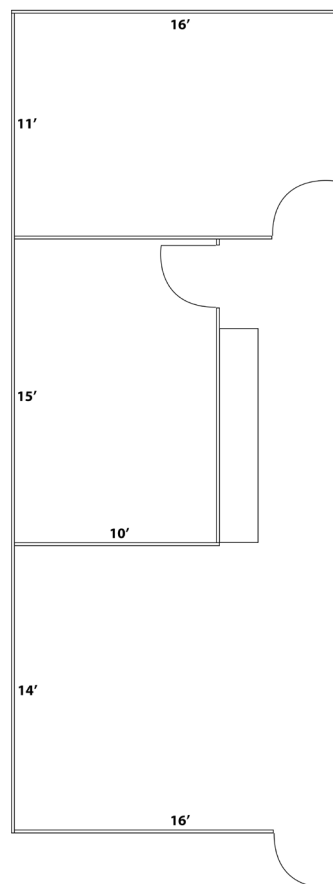


## FLOOR PLAN

**Suite 118 - ±1,010 sf**



**Suite 132 - ±700 sf**



### ■ ROBERT ELLIS ■ LEASING AND INVESTMENT, INC.

**ROBERT ELLIS**  
PHONE: 559/228-8900  
DRE LICENSE #00870649

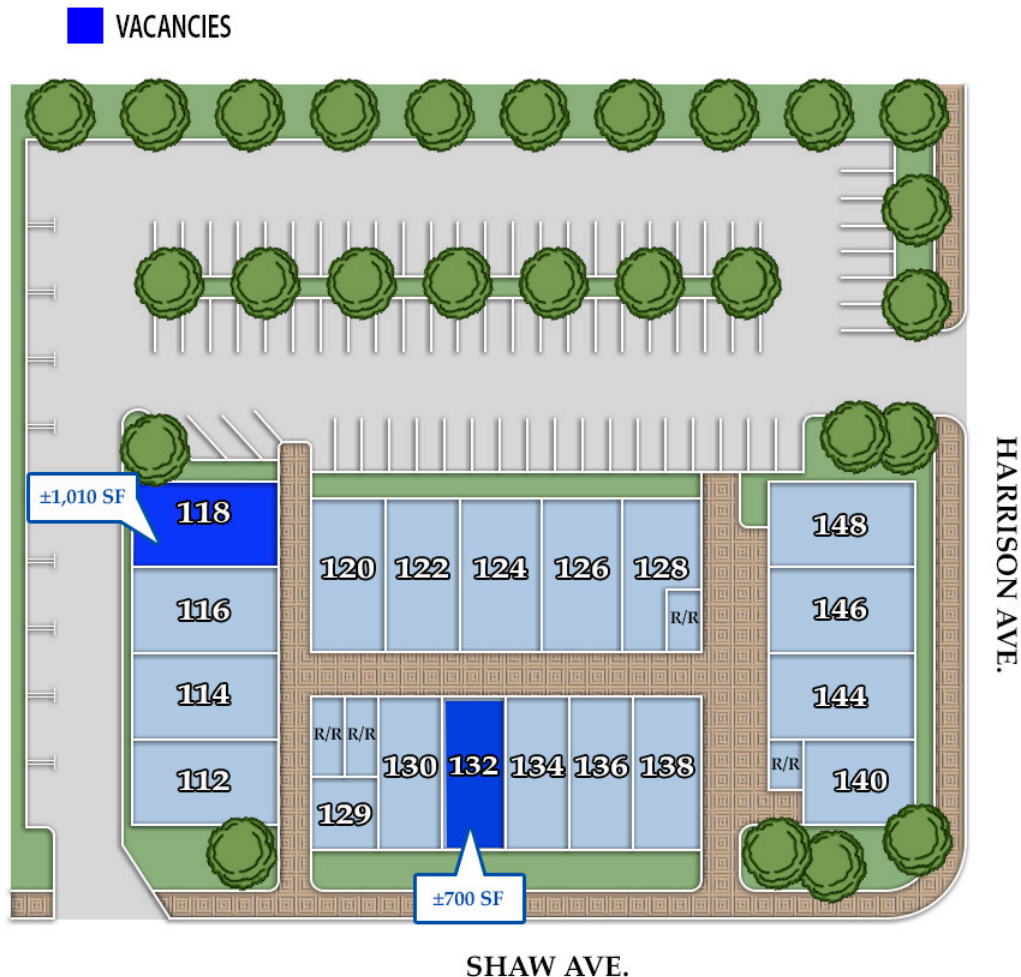
**MITCH WEIBERT**  
PHONE: 559/355-0841  
DRE LICENSE #02198339

7502 NORTH COLONIAL AVENUE, SUITE 101 • FRESNO, CALIFORNIA 93711  
rellis@reli1.com • www.reli1.com

1100 West Shaw Avenue • Fresno, California



# SITE PLAN



## ■ ROBERT ELLIS ■ LEASING AND INVESTMENT, INC.

ROBERT ELLIS  
PHONE: 559/228-8900  
DRE LICENSE #00870649

MITCH WEIBERT  
PHONE: 559/355-0841  
DRE LICENSE #02198339

7502 NORTH COLONIAL AVENUE, SUITE 101 • FRESNO, CALIFORNIA 93711  
rellis@reli1.com • www.reli1.com

This statement with the information it contains is given with the understanding that all negotiations relating to the purchase, renting or leasing of the property described above shall be conducted through this office. This above information, while not guaranteed, has been secured from sources we believe to be reliable.

1100 West Shaw Avenue • Fresno, California



## LOCATION AERIAL



## ■ ROBERT ELLIS ■ LEASING AND INVESTMENT, INC.

ROBERT ELLIS  
PHONE: 559/228-8900  
DRE LICENSE #00870649

MITCH WEIBERT  
PHONE: 559/355-0841  
DRE LICENSE #02198339

7502 NORTH COLONIAL AVENUE, SUITE 101 • FRESNO, CALIFORNIA 93711  
rellis@reli1.com • www.reli1.com

This statement with the information it contains is given with the understanding that all negotiations relating to the purchase, renting or leasing of the property described above shall be conducted through this office. This above information, while not guaranteed, has been secured from sources we believe to be reliable.