

OFFICE/INDUSTRIAL SPACE FOR LEASE 150-170 CROSSWAYS PARK DR, WOODBURY

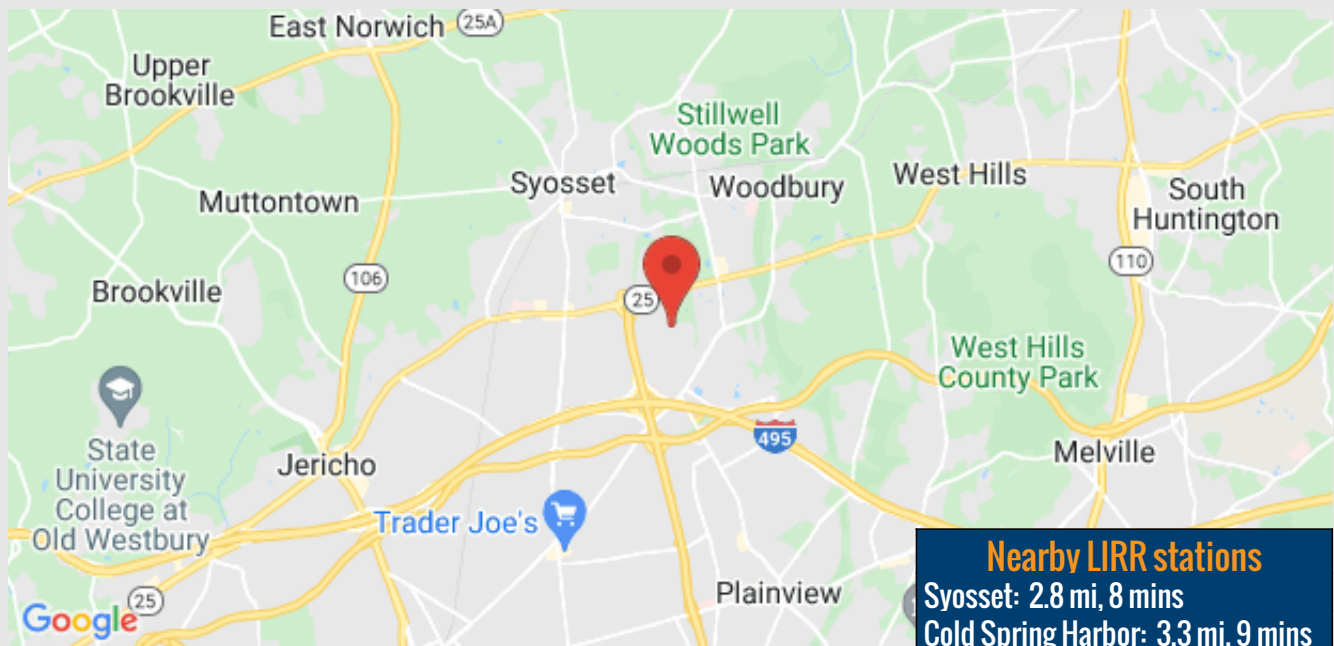
Available: 1,925 sq. ft.



Building Size:	41,123 sq. ft.
Lot Size:	2.48 Acres
Office Space:	1,925 sq. ft.
Ceiling Height :	14.0'
A/C:	Full A/C
Parking:	20
Sewers:	Yes
Avail When:	Immediately
Lease Price:	\$22.00/sq. ft. Gross

FEATURES & NOTES

Suite 3 • Fully air-conditioned office space in a prime Industrial/Flex building located within the Crossways Park Drive Office Park • Landlord willing to convert office back to warehouse



For more information please contact:

James Parnes, RE Salesperson
516-732-7864 (cell)
631-293-3700 x45
jp@schackerrealty.com

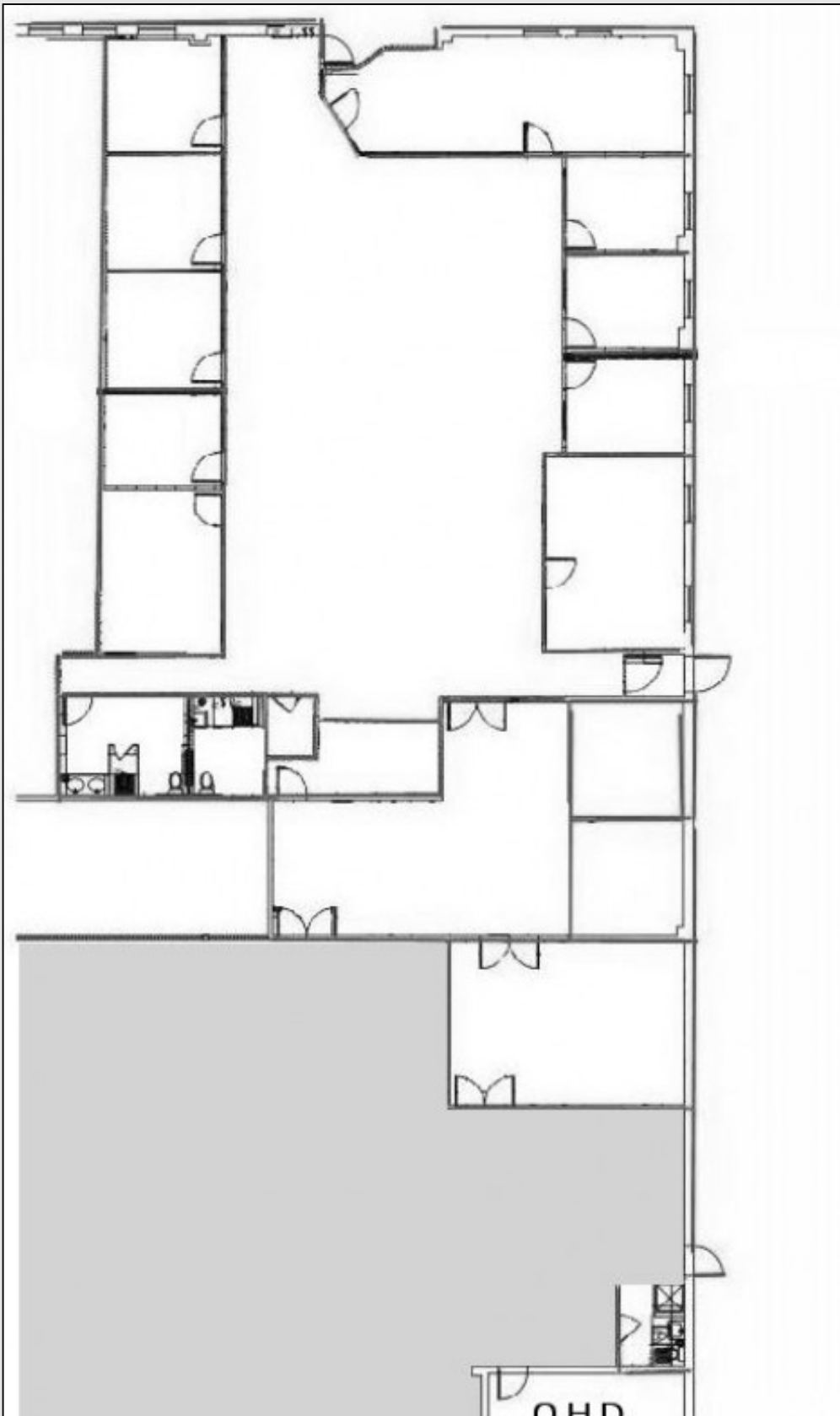
OFFICE/INDUSTRIAL SPACE FOR LEASE
150-170 CROSSWAYS PARK DR, WOODBURY

Available: 1,925 sq. ft.



OFFICE/INDUSTRIAL SPACE FOR LEASE
150-170 CROSSWAYS PARK DR, WOODBURY

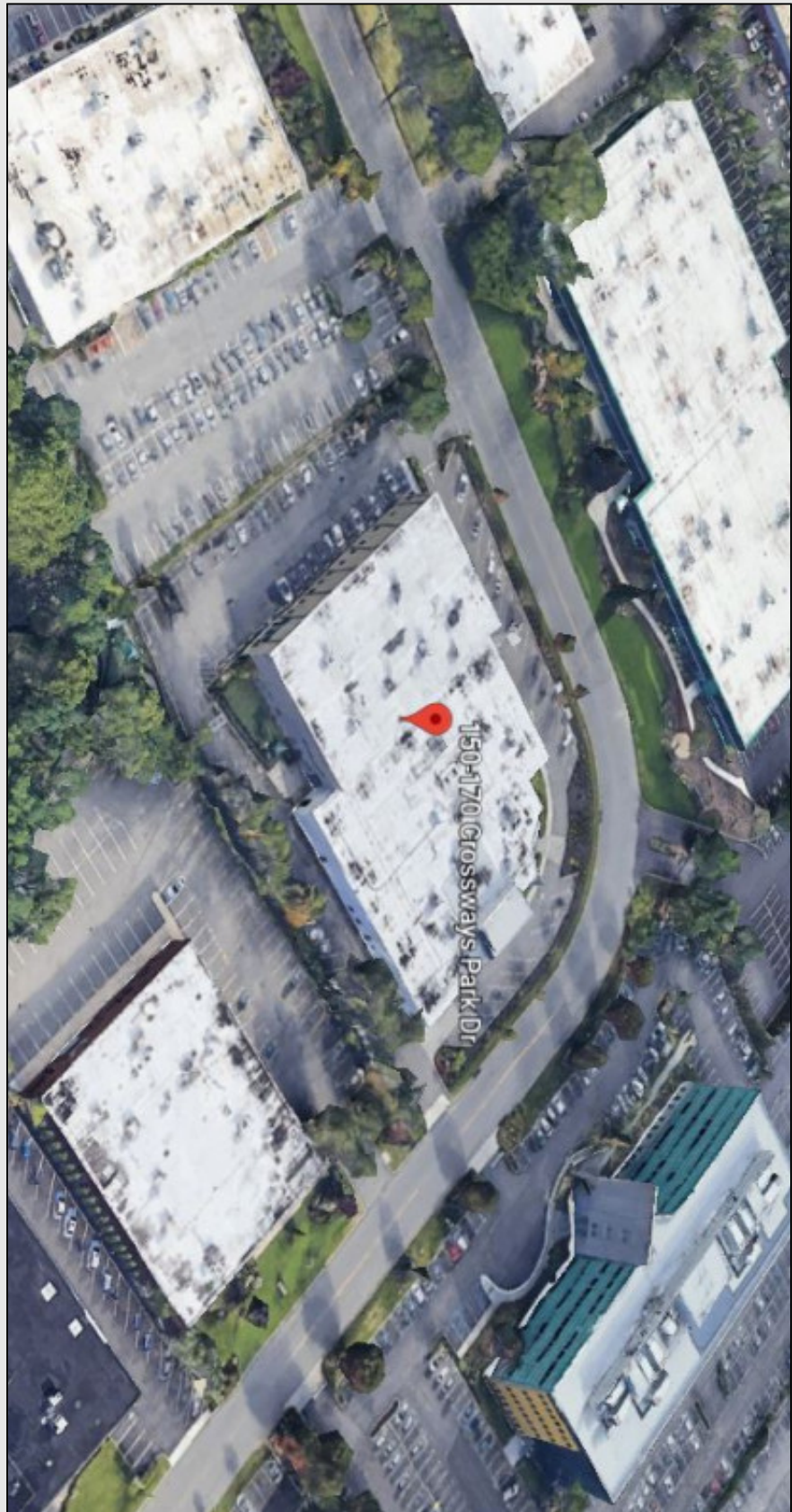
Available: 1,925 sq. ft.



All information is subject to errors, omissions, modification, and withdrawal.
Measurements may be estimates and information shown should not be relied upon without independent verification.

OFFICE/INDUSTRIAL SPACE FOR LEASE
150-170 CROSSWAYS PARK DR, WOODBURY

Available: 1,925 sq. ft.



All information is subject to errors, omissions, modification, and withdrawal.
Measurements may be estimates and information shown should not be relied upon without independent verification.

OFFICE/INDUSTRIAL SPACE FOR LEASE 150-170 CROSSWAYS PARK DR, WOODBURY

Available: 1,925 sq. ft.

