

# FOR SUBLEASE

900 6th Street | Howard Lake, MN

2,991 SF



**Katie Trevena**

Senior Vice President  
(952) 525-3332  
Katie.Trevena@ForteREP.com  
www.ForteREP.com

**Jaime Dritz**

Client Coordinator  
(952) 525-3342  
Jaime.Dritz@ForteREP.com  
www.ForteREP.com



**FORTE**  
REAL ESTATE PARTNERS

# SUBLEASE SPACE FEATURES

900 6th Street | Howard Lake, Minnesota

## Building Information

Building Size 30,803 SF

Occupied 100%

Floors 2

## Sublease Terms

Rate Negotiable

Space Available 2,991 SF

Lease Available 08/01/2024

Lease Expiration 09/30/2028



- Ample surface level parking
- Located in the heart of Howard Lake
- Monument and on building signage available
- Great highway visibility
- Easy access off Hwy 12

### Katie Trevena

Vice President  
(952) 525-3332  
Katie.Trevena@ForteREP.com  
www.ForteREP.com

### Jaime Dritz

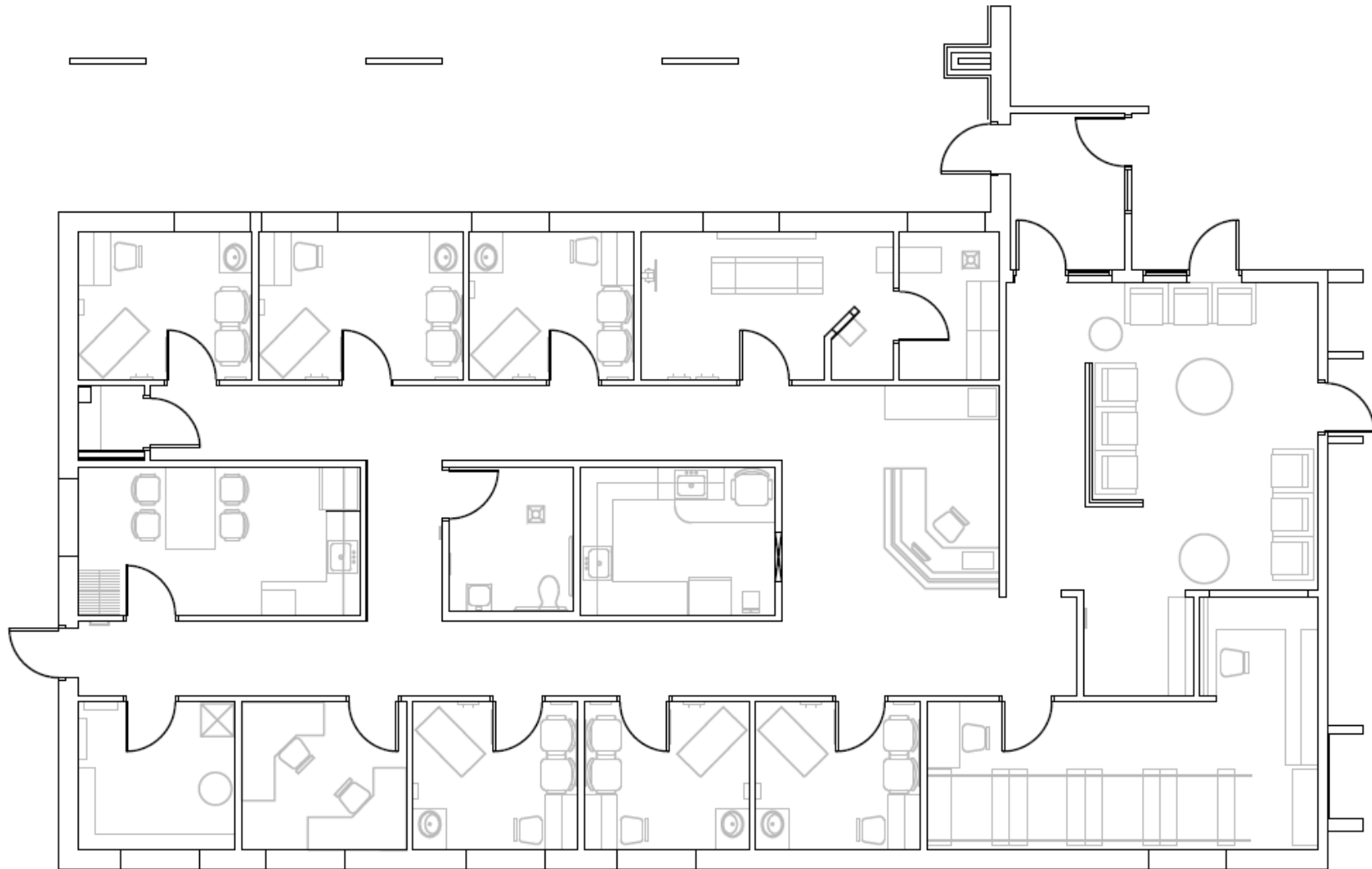
Client Coordinator  
(952) 525-3342  
Jaime.Dritz@ForteREP.com  
www.ForteREP.com



**FORTE**  
REAL ESTATE PARTNERS

# Floor Plan | 2,991 SF

900 6th Street | Howard Lake, Minnesota



**Katie Trevena**

Vice President  
(952) 525-3332  
Katie.Trevena@ForteREP.com  
www.ForteREP.com

**Jaime Dritz**

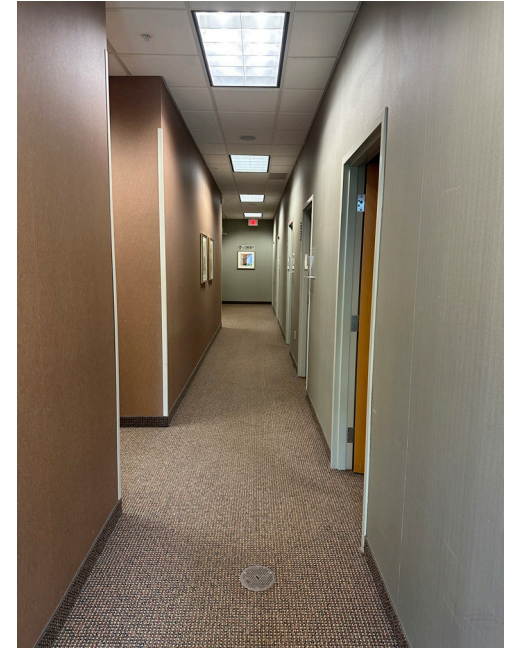
Client Coordinator  
(952) 525-3342  
Jaime.Dritz@ForteREP.com  
www.ForteREP.com



**FORTE**  
REAL ESTATE PARTNERS

# SUBLEASE SPACE PHOTOS

900 6th Street | Howard Lake, Minnesota



**Katie Trevena**  
Vice President  
(952) 525-3332  
Katie.Trevena@ForteREP.com  
www.ForteREP.com

**Jaime Dritz**  
Client Coordinator  
(952) 525-3342  
Jaime.Dritz@ForteREP.com  
www.ForteREP.com



# AERIAL VIEW

900 6th Street | Howard Lake, Minnesota



**Katie Trevena**

Vice President  
(952) 525-3332  
Katie.Trevena@ForteREP.com  
www.ForteREP.com

**Jaime Dritz**

Client Coordinator  
(952) 525-3342  
Jaime.Dritz@ForteREP.com  
www.ForteREP.com



**FORTE**  
REAL ESTATE PARTNERS

# DEMOGRAPHICS

900 6th Street | Howard Lake, Minnesota

Within a 5-Mile Radius



164

Total Businesses



1,767

Total Employees

## KEY FACTS

5,166

Population

39.6

Median Age

2.6

Average Household Size

\$85,449

Median Household Income

This infographic contains data provided by Esri, Esri-Data Axle. The vintage of the data is 2024, 2029.

© 2024 Esri

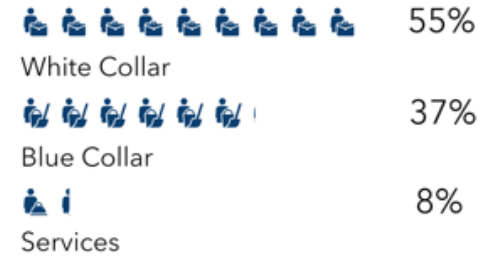
## AGE PYRAMID



The largest group: 2024 Males Age 15-19  
The smallest group: 2024 Males Age 85+

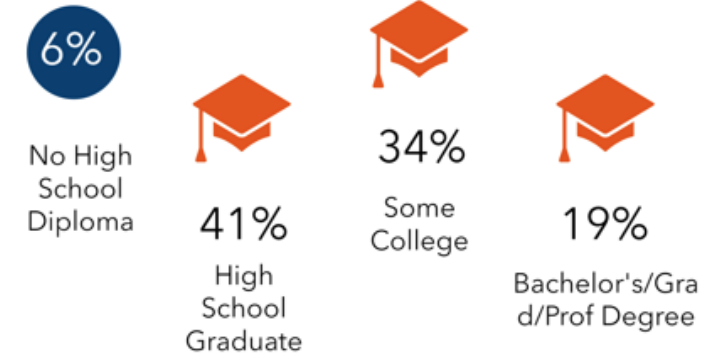
## EMPLOYMENT & EDUCATION

### EMPLOYMENT



1.0%  
Unemployment Rate

### EDUCATION



**Katie Trevena**  
Vice President  
(952) 525-3332  
Katie.Trevena@ForteREP.com  
www.ForteREP.com

**Jaime Dritz**  
Client Coordinator  
(952) 525-3342  
Jaime.Dritz@ForteREP.com  
www.ForteREP.com

