

For Lease

Retail/Restaurant/
Business Building
126 West Loockerman
Street
Dover, DE 19901

Charles
Rodriguez

302-674-3400

ccrod1@aol.com



46 South State Street
Dover, Delaware 19901

302-674-3400

www.randrcommercialrealty.com



New Retail Center Coming!!

Loockerman Plaza will be a vibrant new addition to Downtown Dover. Sitting on 1.14+/- acres, these 2 gorgeous buildings will stand adjacent on historic West Loockerman Street with 22,102+/- Total SF of retail/restaurant/business space and 58 onsite parking spaces.

All information contained herein is believed to be accurate, however was obtained from third parties and R & R Commercial Realty, Inc. does not warrant as to the accuracy submitted, subject to changes or modification without notice. Listing Broker represents the sellers interest.

Retail/Restaurant/Business Building for Lease



126 West Lookerman Street, Dover, DE 19901

Property Information

⇒ Building 1

1st Floor 5,860 RSF - Retail/
Restaurant

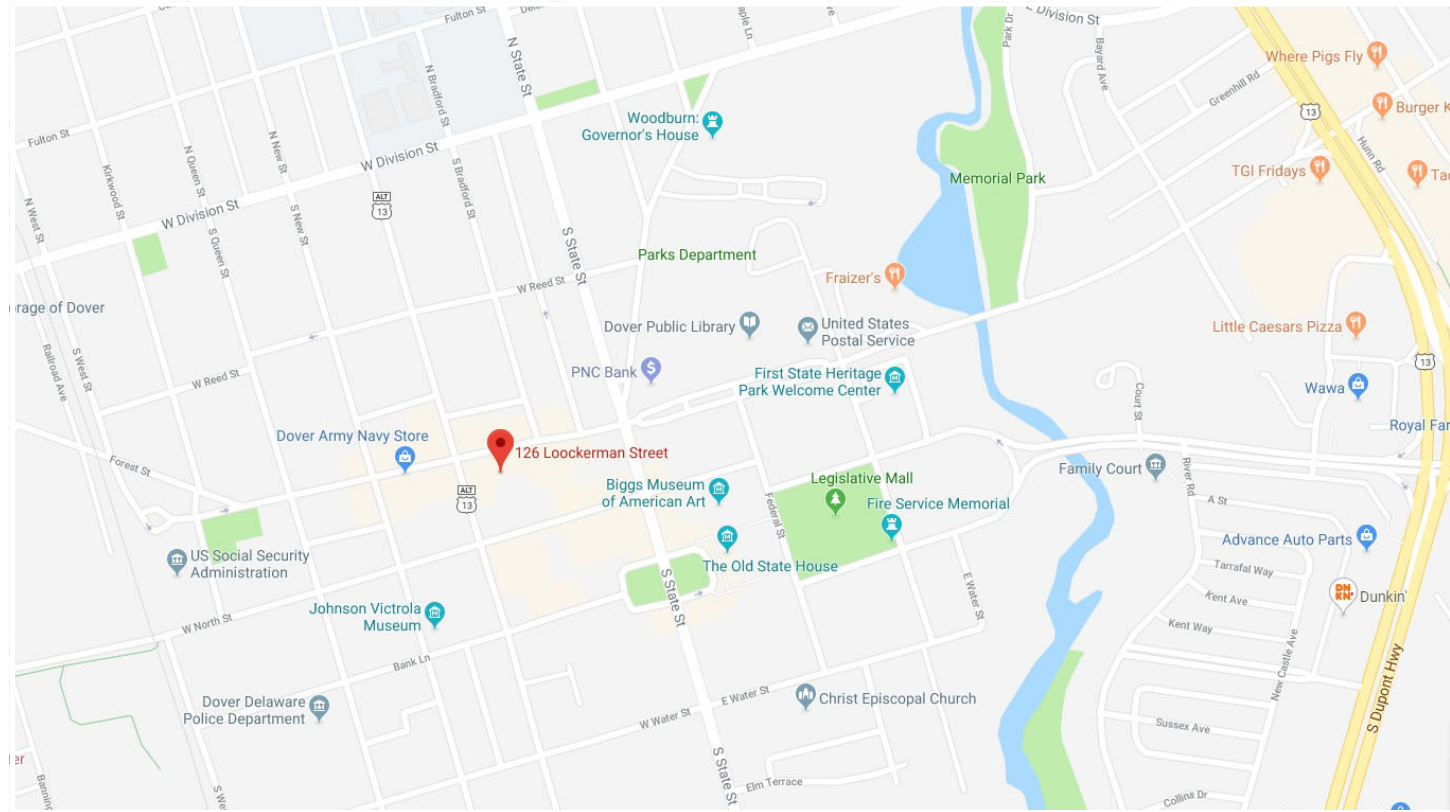
2nd - 3rd Floor up to 6,366 RSF
per Floor - Business

⇒ Building 2

1st Floor 6,913 RSF - Retail/
Restaurant

2nd - 4th Floor up to 7,453 RSF
per Floor - Business

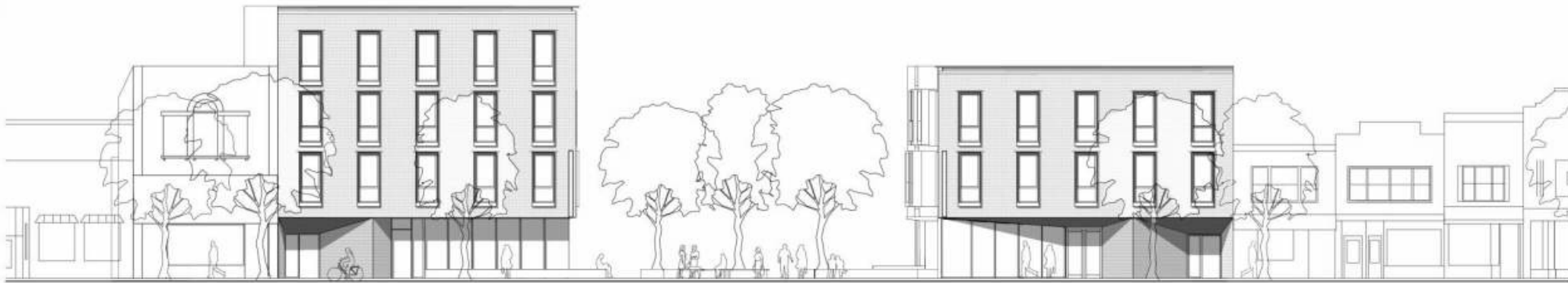
Lease Price: \$17.50 psf NNN
(est. \$3.50 psf CAM)



R&R Commercial Realty ◆ 46 South State Street, Dover, DE 19901 ◆ 302-674-3400 ◆ www.randrcommercialrealty.com

Retail/Restaurant/Business Building for Lease

126 West Lookerman Street, Dover, DE 19901



WEST BUILDING - LOOKERMAN PLAZA ELEVATION



EAST AND WEST BUILDINGS - LOOKERMAN ST. ELEVATION

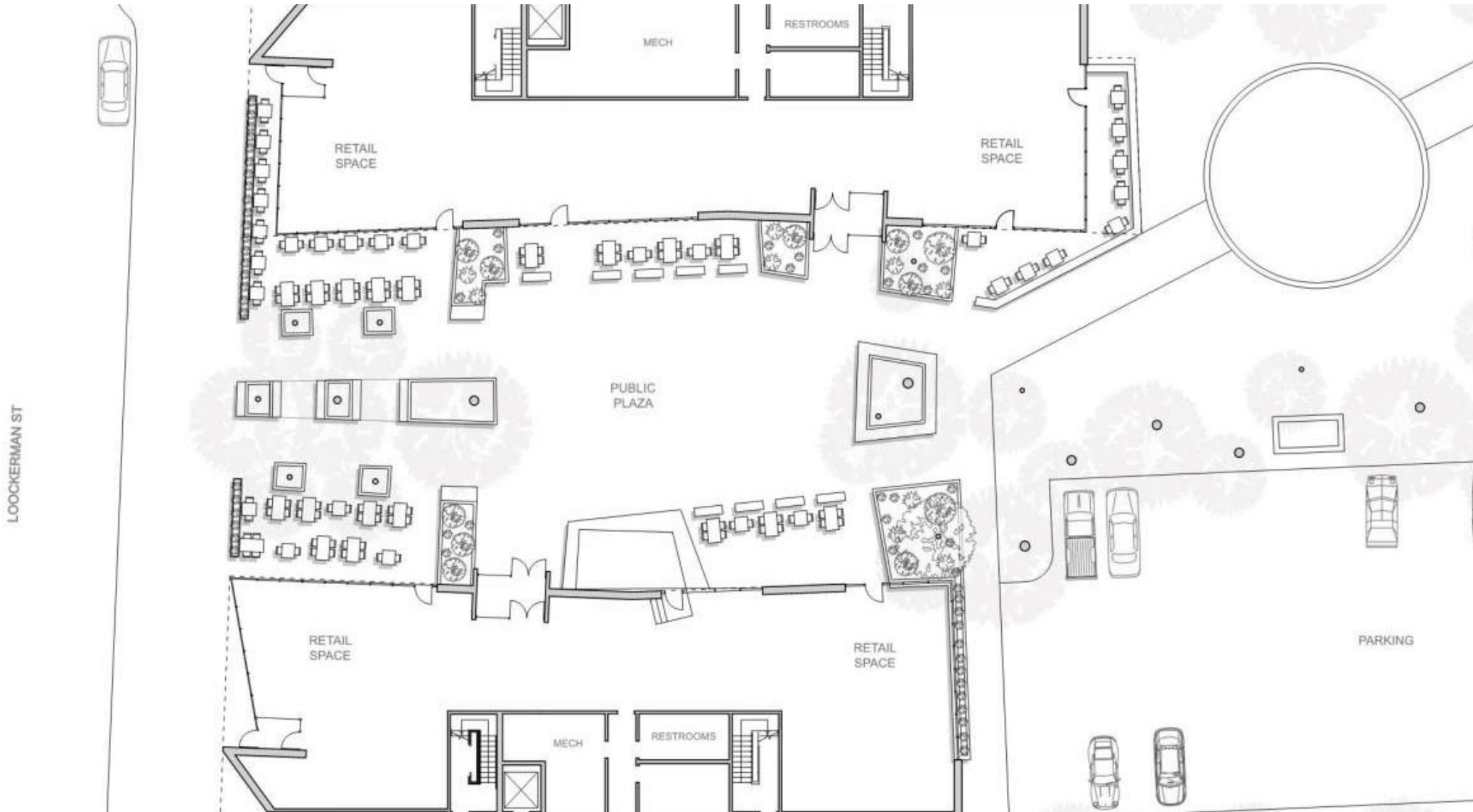


R&R Commercial Realty ◆ 46 South State Street, Dover, DE 19901 ◆ 302-674-3400 ◆ www.randrcommercialrealty.com

All information contained herein is believed to be accurate, however was obtained from third parties and R & R Commercial Realty, Inc. does not warrant as to the accuracy submitted, subject to changes or modification without notice. Listing Broker represents the sellers interest.

Retail/Restaurant/Business Building for Lease

126 West Lookerman Street, Dover, DE 19901

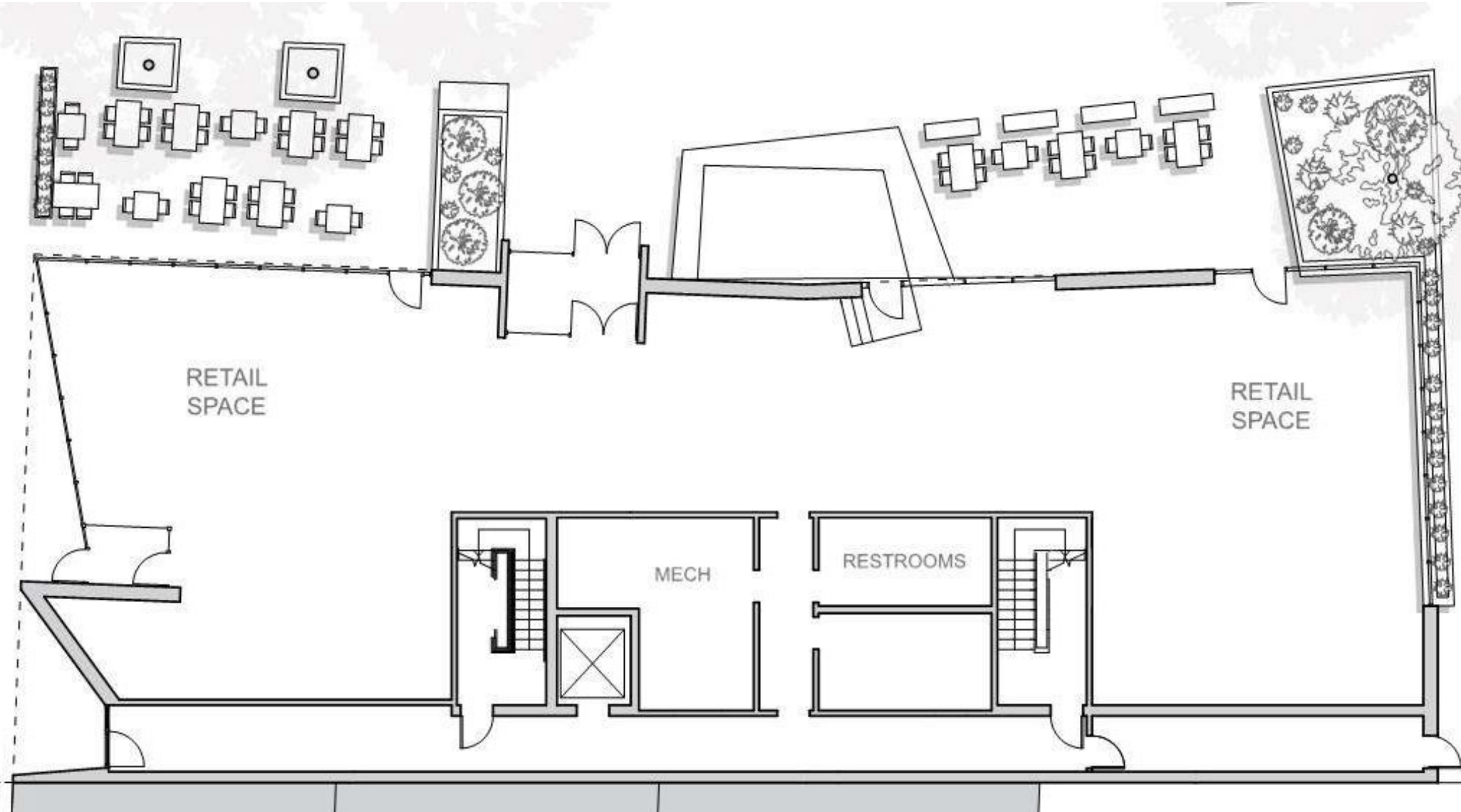


R&R Commercial Realty ♦ 46 South State Street, Dover, DE 19901 ♦ 302-674-3400 ♦ www.randrcommercialrealty.com

All information contained herein is believed to be accurate, however was obtained from third parties and R & R Commercial Realty, Inc. does not warrant as to the accuracy submitted, subject to changes or modification without notice. Listing Broker represents the sellers interest.

Retail/Restaurant/Business Building for Lease

126 West Lookerman Street, Dover, DE 19901

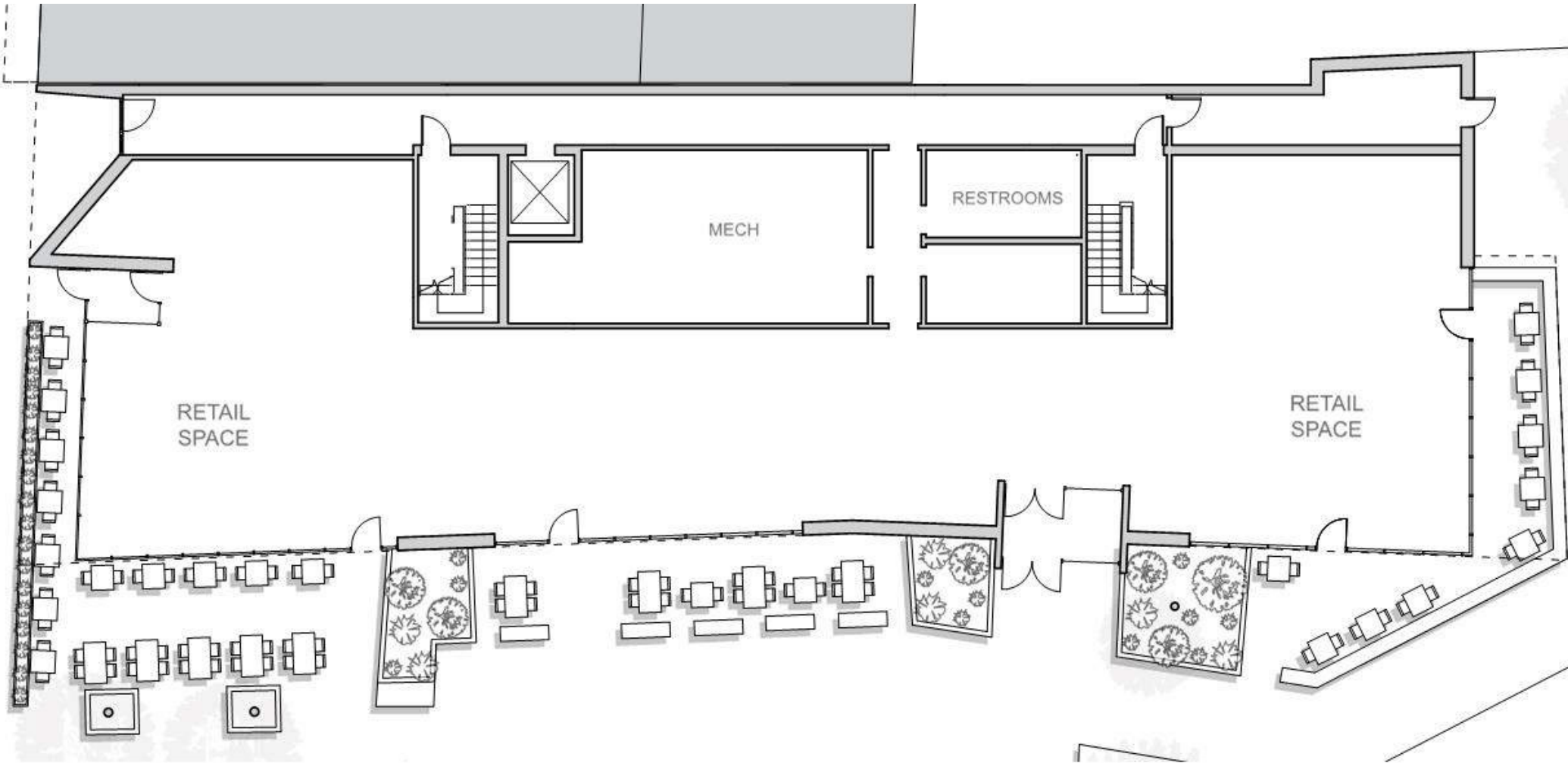


R&R Commercial Realty ♦ 46 South State Street, Dover, DE 19901 ♦ 302-674-3400 ♦ www.randrcommercialrealty.com

All information contained herein is believed to be accurate, however was obtained from third parties and R & R Commercial Realty, Inc. does not warrant as to the accuracy submitted, subject to changes or modification without notice. Listing Broker represents the sellers interest.

Retail/Restaurant/Business Building for Lease

126 West Lookerman Street, Dover, DE 19901

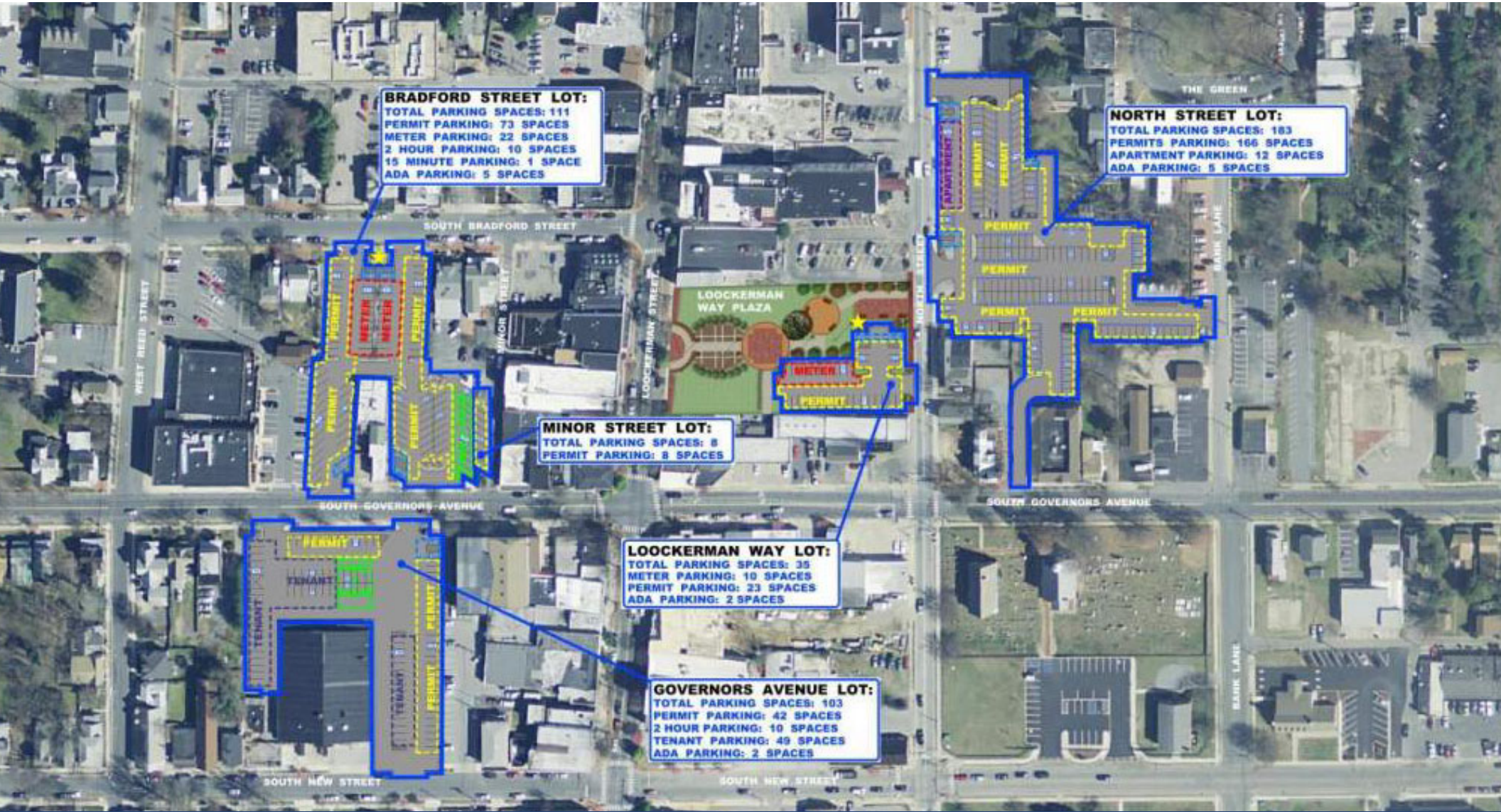


R&R Commercial Realty ♦ 46 South State Street, Dover, DE 19901 ♦ 302-674-3400 ♦ www.randrcommercialrealty.com

All information contained herein is believed to be accurate, however was obtained from third parties and R & R Commercial Realty, Inc. does not warrant as to the accuracy submitted, subject to changes or modification without notice. Listing Broker represents the sellers interest.

Retail/Restaurant/Business Building for Lease

126 West Lookerman Street, Dover, DE 19901



BRADFORD STREET LOT:
TOTAL PARKING SPACES: 111
PERMIT PARKING: 73 SPACES
METER PARKING: 22 SPACES
2 HOUR PARKING: 10 SPACES
15 MINUTE PARKING: 1 SPACE
ADA PARKING: 5 SPACES

NORTH STREET LOT:
TOTAL PARKING SPACES: 183
PERMITS PARKING: 166 SPACES
APARTMENT PARKING: 12 SPACES
ADA PARKING: 5 SPACES

MINOR STREET LOT:
TOTAL PARKING SPACES: 8
PERMIT PARKING: 8 SPACES

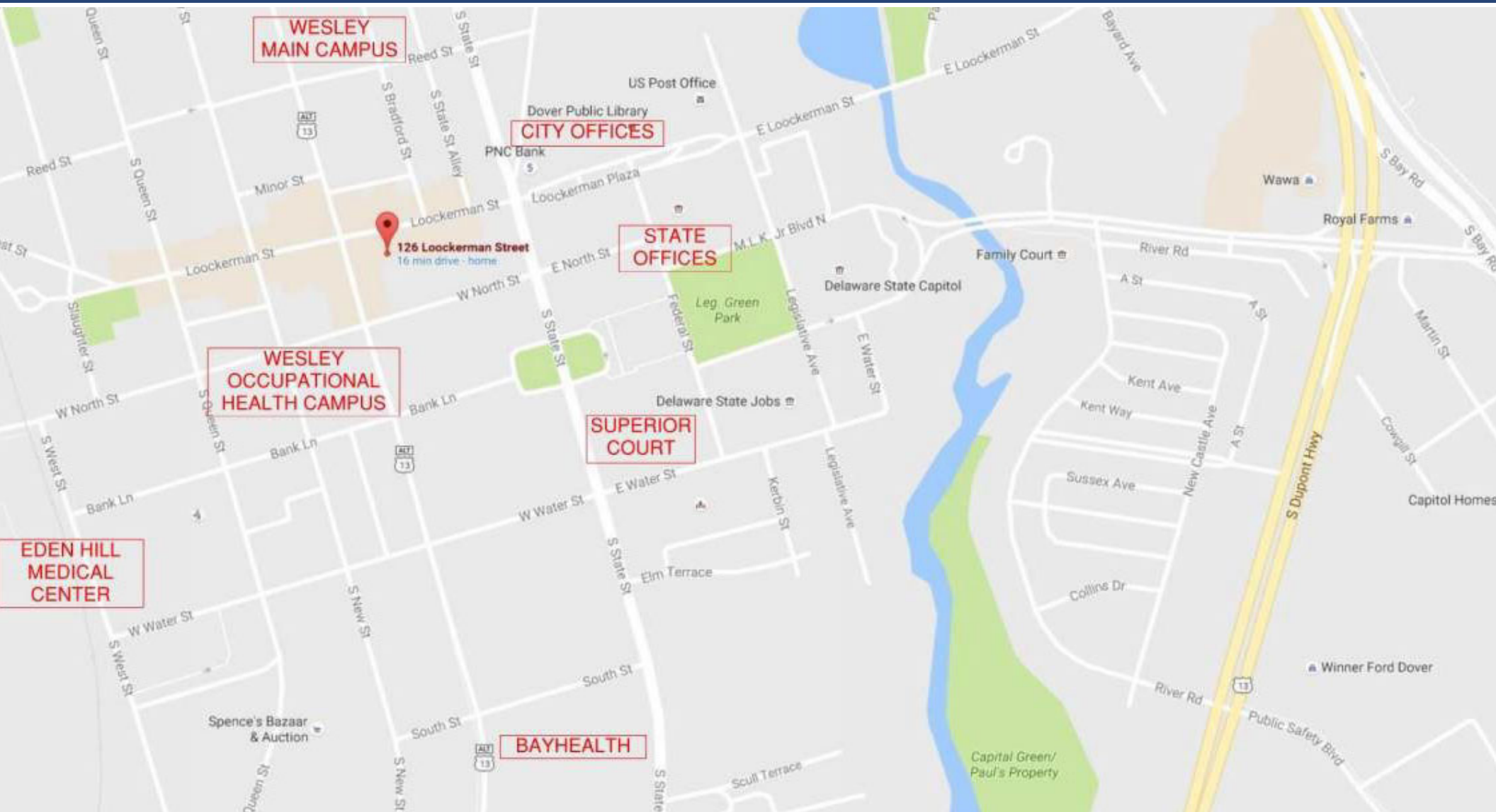
LOOKERMAN WAY LOT:
TOTAL PARKING SPACES: 35
METER PARKING: 10 SPACES
PERMIT PARKING: 23 SPACES
ADA PARKING: 2 SPACES

GOVERNORS AVENUE LOT:
TOTAL PARKING SPACES: 103
PERMIT PARKING: 42 SPACES
2 HOUR PARKING: 10 SPACES
TENANT PARKING: 49 SPACES
ADA PARKING: 2 SPACES

R&R Commercial Realty ♦ 46 South State Street, Dover, DE 19901 ♦ 302-674-3400 ♦ www.randrcommercialrealty.com

Retail/Restaurant/Business Building for Lease

126 West Lookerman Street, Dover, DE 19901



R&R Commercial Realty ♦ 46 South State Street, Dover, DE 19901 ♦ 302-674-3400 ♦ www.randrcommercialrealty.com

All information contained herein is believed to be accurate, however was obtained from third parties and R & R Commercial Realty, Inc. does not warrant as to the accuracy submitted, subject to changes or modification without notice. Listing Broker represents the sellers interest.