



COMMERCIAL PROPERTIES

Brokerage • Management • Investments • Accounting



Hannah Poe
361.303.3334
m: 936.537.0594
hpoe@dhrp.us

±12.8 AC DEVELOPMENT OPPORTUNITY - SAN PATRICIO COUNTY

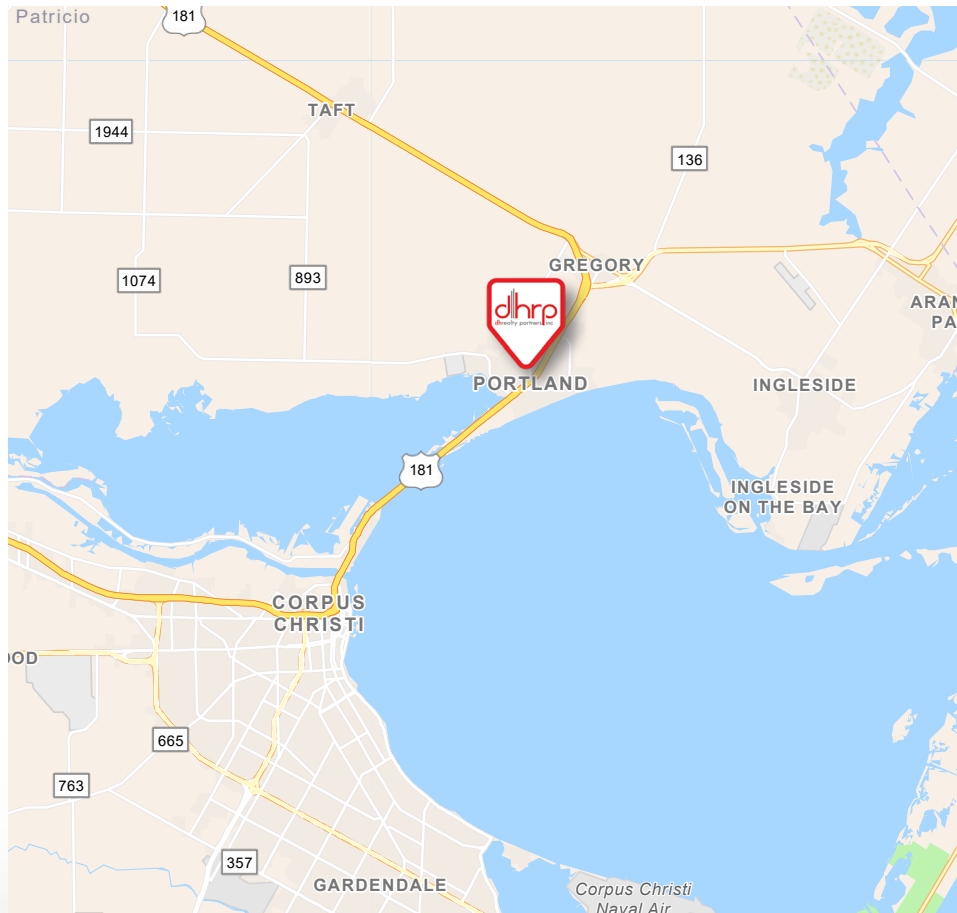
0 Lang Rd | Portland, TX 78374



FOR SALE

±12.8 AC DEVELOPMENT OPPORTUNITY - SAN PATRICIO

0 Lang Rd | Portland, TX 78374



CLOSE PROXIMITY TO PORT CORPUS CHRISTI (±7 MILES)

HIGHLIGHTS

- Amongst new home development
- New city road frontage being completed
- Local award-winning school district with the most recently completed elementary school less than a mile away!
- ±7 miles from the Port of Corpus Christi
- ±2.8 miles from Gulf Coast Growth Ventures ExxonMobil/SABIC
- ±18.3 miles from Steel Dynamics plan

DESCRIPTION

Great opportunity for development in the Portland city limits, a short distance from ExxonMobil/SABIC Gulf Coast Growth Ventures and just around the corner from the city's newest elementary school. Lang Road is currently being expanded to four lanes due to the local expansion and traffic. A recent \$100m project is being constructed as "Portland Town Center" with a Target store anchor, slated to open in 2024.

LAND SIZE

±12.8 AC

FLOOD PLAIN

FEMA shows that no part of this property is located in the 100-year flood area

ZONING

OCL, Outside City Limits

SALE PRICE

\$627,530

The information herein was obtained from sources deemed reliable; however, DH Realty Partners, Inc. makes no guarantees, warranties, or representations as to the completeness of accuracy thereof. The presentation of this property is submitted subject to errors, omissions, changes of price, prior to sale or lease, or withdrawal without notice. All Floor plans, property lines, areas, and dimensions are approximate and for illustration purposes only. DHRP | DH Realty Partners, Inc. ©2024. A Texas Corporation.

±12.8 AC DEVELOPMENT OPPORTUNITY - SAN PATRICIO

0 Lang Rd | Portland, TX 78374

PHOTOS



The information herein was obtained from sources deemed reliable; however, **DH Realty Partners, Inc.** makes no guarantees, warranties, or representations as to the completeness of accuracy thereof. The presentation of this property is submitted subject to errors, omissions, changes of price, prior to sale or lease, or withdrawal without notice. All Floor plans, property lines, areas, and dimensions are approximate and for illustration purposes only. DHRP | DH Realty Partners, Inc. ©2024. A Texas Corporation.

±12.8 AC DEVELOPMENT OPPORTUNITY - SAN PATRICIO

0 Lang Rd | Portland, TX 78374

SURVEY



The information herein was obtained from sources deemed reliable; however, DH Realty Partners, Inc. makes no guarantees, warranties, or representations as to the completeness of accuracy thereof. The presentation of this property is submitted subject to errors, omissions, changes of price, prior to sale or lease, or withdrawal without notice. All Floor plans, property lines, areas, and dimensions are approximate and for illustration purposes only. DHRP | DH Realty Partners, Inc. ©2024. A Texas Corporation.

±12.8 AC DEVELOPMENT OPPORTUNITY - SAN PATRICIO

0 Lang Rd | Portland, TX 78374

AERIAL

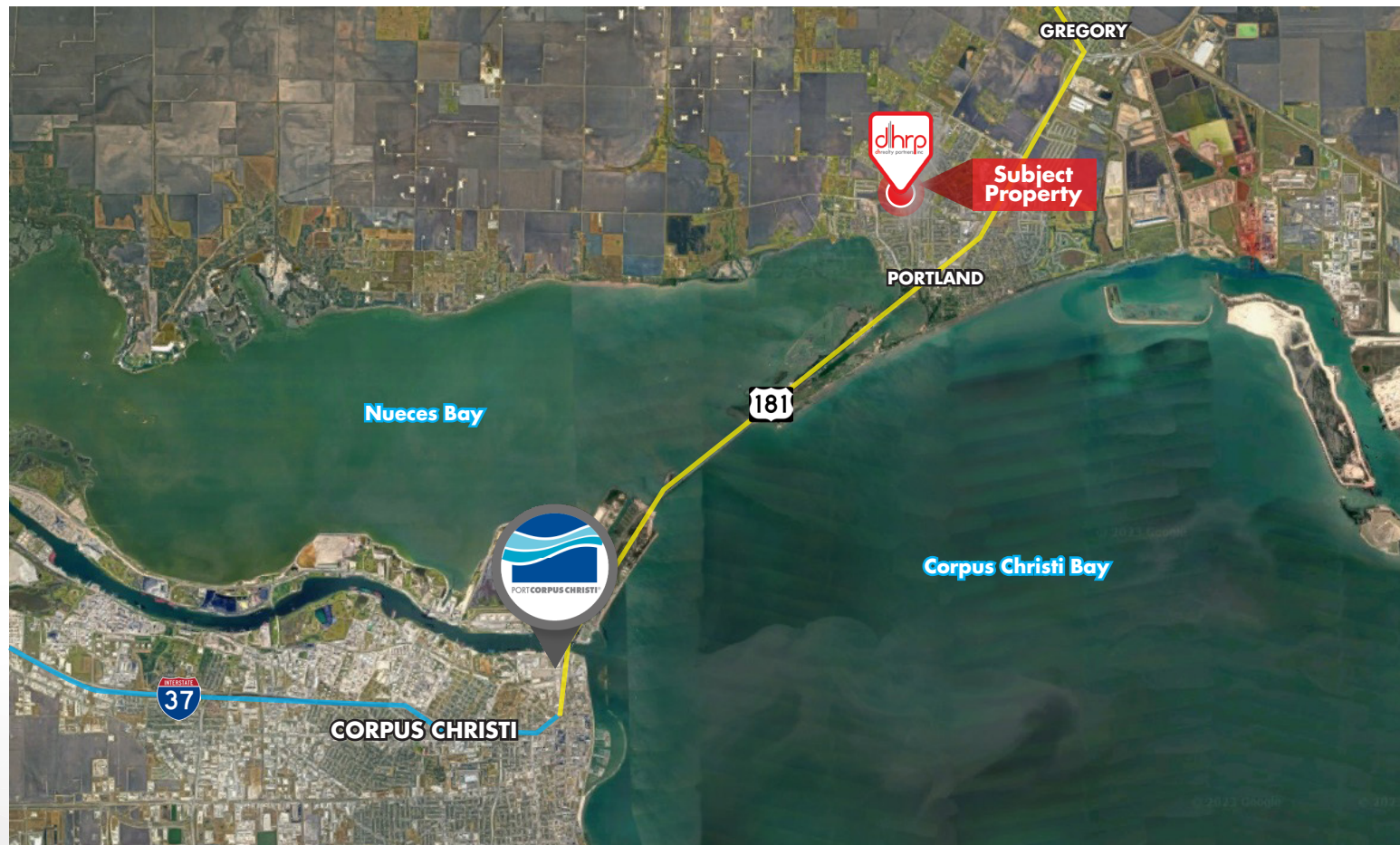


The information herein was obtained from sources deemed reliable; however, DH Realty Partners, Inc. makes no guarantees, warranties, or representations as to the completeness of accuracy thereof. The presentation of this property is submitted subject to errors, omissions, changes of price, prior to sale or lease, or withdrawal without notice. All Floor plans, property lines, areas, and dimensions are approximate and for illustration purposes only. DHRP | DH Realty Partners, Inc. ©2024. A Texas Corporation.

±12.8 AC DEVELOPMENT OPPORTUNITY - SAN PATRICIO

0 Lang Rd | Portland, TX 78374

AERIAL



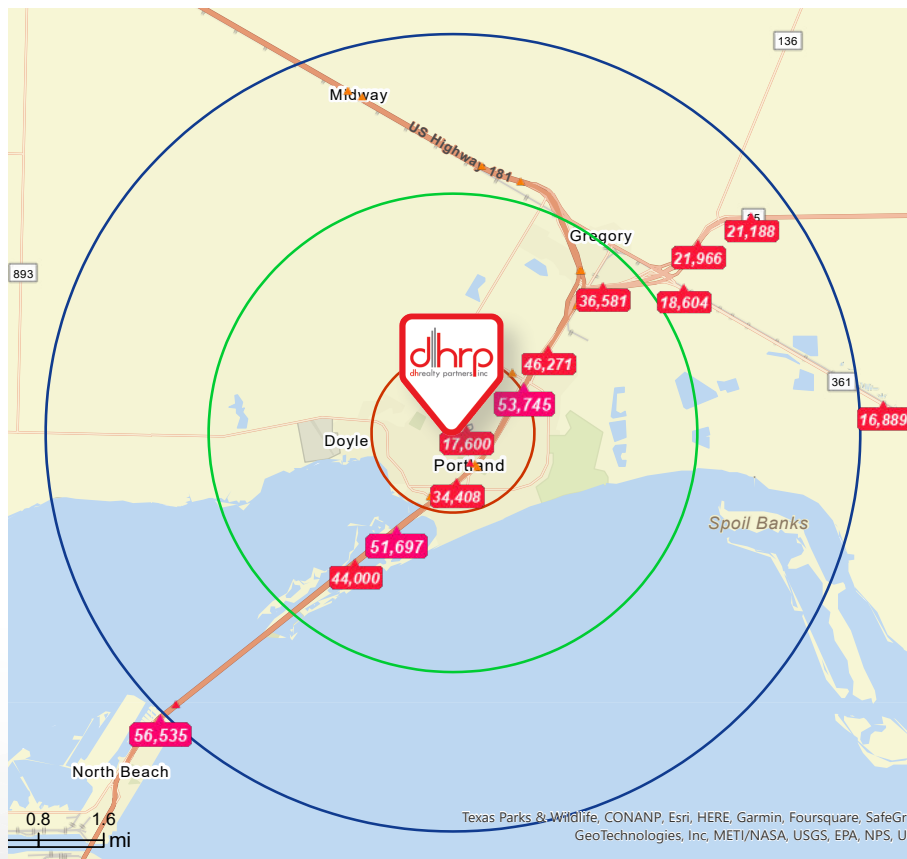
The information herein was obtained from sources deemed reliable; however, DH Realty Partners, Inc. makes no guarantees, warranties, or representations as to the completeness of accuracy thereof. The presentation of this property is submitted subject to errors, omissions, changes of price, prior to sale or lease, or withdrawal without notice. All Floor plans, property lines, areas, and dimensions are approximate and for illustration purposes only. DHRP | DH Realty Partners, Inc. ©2024. A Texas Corporation.

±12.8 AC DEVELOPMENT OPPORTUNITY - SAN PATRICIO

0 Lang Rd | Portland, TX 78374

LOCATION INFORMATION

TRAFFIC COUNTS



DEMOGRAPHICS

	1 Mile	3 Mile	5 Mile
Population	9,780	21,835	22,867
Median Age	34.2	37.2	37.2
Avg Household Size	2.9	2.8	2.8
Median Household Income	\$80,866	\$83,732	\$82,694

Source: ESRI, 2022



The information herein was obtained from sources deemed reliable; however, **DH Realty Partners, Inc.** makes no guarantees, warranties, or representations as to the completeness of accuracy thereof. The presentation of this property is submitted subject to errors, omissions, changes of price, prior to sale or lease, or withdrawal without notice. All Floor plans, property lines, areas, and dimensions are approximate and for illustration purposes only. DHRP | DH Realty Partners, Inc. ©2024. A Texas Corporation.

±12.8 AC DEVELOPMENT OPPORTUNITY - SAN PATRICIO

0 Lang Rd | Portland, TX 78374

SAN PATRICIO COUNTY MARKET OVERVIEW

DEMOGRAPHICS

In San Patricio County, there are nearly 70,000 people who call the community home. It is common for residents to be willing to commute 30 minutes or more to work, and within a 35-mile radius the regional population expands to just over 500,000 people including the Corpus Christi area.



430,217

MSA Population



38.1

Median Age



\$80,365

Average Household Income



23 Min

Average Commute Time

MAJOR EMPLOYERS

Kiewit Offshore Services

Construction

3000 EMPLOYEES

Flint Hills Resources

Refining

1000 EMPLOYEES

Gregory Portland ISD

Education

729 EMPLOYEES

Gulf Coast Growth Ventures

Chemical

670 EMPLOYEES

Steel Dynamics

Manufacturing

600 EMPLOYEES

San Patricio County

Government

Company HQ ★

541 EMPLOYEES

QUICK FACTS

- 30 minutes from Corpus Christi International Airport
- 37 billion in capital investment over the last 10 years
- Home to the largest manufacturing sector in the Coastal Bend, with more than one in 10 jobs relating to this industry
- Prime access to two ports, the Port of Corpus Christi and the port of Aransas
- Low costs of land, labor, and taxes
- Well educated workforce from Texas A&M, Del Mar College, and the Craft Training Center



Source: <https://sanpatricioedc.com/>

The information herein was obtained from sources deemed reliable; however, DH Realty Partners, Inc. makes no guarantees, warranties, or representations as to the completeness of accuracy thereof. The presentation of this property is submitted subject to errors, omissions, changes of price, prior to sale or lease, or withdrawal without notice. All Floor plans, property lines, areas, and dimensions are approximate and for illustration purposes only. DHRP | DH Realty Partners, Inc. ©2024. A Texas Corporation.

±12.8 AC DEVELOPMENT OPPORTUNITY - SAN PATRICIO

0 Lang Rd | Portland, TX 78374

CORPUS CHRISTI MARKET OVERVIEW

TRAVEL STATISTICS

- 24,000 Hospitality Employees**
WELCOMING
- 10+ Million Visitors**
SPENDING
- \$1.5 Billion Per Year**
GENERATING
- \$22 Million In Sales Tax Revenues**
CONTRIBUTING
- 26% Of Citywide Sales Tax**

Source: <https://www.visitcorpuschristi.com/about-us/annual-report/>



With \$50 billion in capital investment since 2010, the Corpus Christi region ranks as one of the largest industrial and energy-related project magnets in the world.

The roll call of heavyweight investors reads like a Who's Who of big business: ExxonMobil, SABIC, Citgo, Talen Energy, Magellan, Air Liquide, Haliburton, Valero, Cheniere, Kiewit, TPCO, LyondellBasell and Howard Energy, just to name a few.

The growth wave is not subsiding anytime soon either. Three years into the 5-year strategic plan of the Corpus Christi Regional Economic Development Corp., the organization has tallied \$30 billion in capital investment, 2,200 new jobs and \$151 million in payroll.

"We are a relatively congestion-free deepwater port on the Gulf of Mexico. We have the pipeline infrastructure to handle massive amounts of product. We have an experienced and technically proficient workforce, and we are doubling our capacity for our process technology program in our local college," says Iain Vasey, president and CEO of the CCREDC. "We will double the number of graduates from that program this year, and then we plan to double it again in another two years. We are not standing pat."

Source: <https://siterelection.com/cc/corpuschristi/>

MAJOR EMPLOYERS



The information herein was obtained from sources deemed reliable; however, DH Realty Partners, Inc. makes no guarantees, warranties, or representations as to the completeness of accuracy thereof. The presentation of this property is submitted subject to errors, omissions, changes of price, prior to sale or lease, or withdrawal without notice. All Floor plans, property lines, areas, and dimensions are approximate and for illustration purposes only. DHRP | DH Realty Partners, Inc. ©2024. A Texas Corporation.

HAZARDOUS MATERIAL DISCLOSURE

Every purchaser, seller, landlord and/or tenant of any interest in real property ("Property") is notified that prior or current uses of the Property or adjacent properties may have resulted in hazardous or undesirable materials being located on the Property. These materials may not be visible or easily detected. Current or future laws may require removal or clean-up of areas containing these materials. In order to determine if hazardous or undesirable materials are present on the Property, expert inspections are necessary and removal or clean-up of these materials will require the services of experts. Real Estate Agents are not qualified experts.

If you are a seller or landlord, it is your responsibility to ensure that the transaction documents include disclosures and/or disclaimers that are appropriate for the transaction and the Property.

If you are a purchaser or tenant, it is your responsibility to ensure that the transaction documents include provisions to permit consultation with attorneys, environmental consultants and others to make prudent investigations, and further that such inspections are conducted.

ADA DISCLOSURE

In order to ensure that all business establishments are accessible to persons with a variety of disabilities, the Americans with Disabilities Act was enacted under federal law and there are also state and local laws that may require alterations to a Property in order to allow access. Texas has enacted the Architectural Barriers Removal Act to also accommodate persons with disabilities. Real Estate Agents are not qualified to advise you if the Property complies with these laws or what changes may be necessary. You should consult with attorneys, engineers and other experts to determine if the Property is in compliance with these laws.

FLOOD PLAIN INFORMATION DISCLOSURE

It is the sole responsibility of every purchaser, seller, landlord and/or tenant of any interest in Property to independently review the appropriate flood plain designation maps proposed and adopted by federal, state, and local resources including, but not limited to, the Federal Emergency Management Association ("FEMA") and the San Antonio River Authority ("SARA"), in order to determine the potential flood risk of their Property. Real Estate Agents are not qualified to assess and cannot warrant, guarantee, or make any representations about the flood risk of a particular piece of Property. All decisions made or actions taken or not taken by a purchaser, seller, landlord and/or tenant with respect to the flood risk of a particular piece of Property shall be the sole responsibility of such party.

The information herein was obtained from sources deemed reliable; however, DH Realty Partners, Inc. makes no guarantees, warranties, or representations as to the completeness of accuracy thereof. The presentation of this property is submitted subject to errors, omissions, changes of price, prior to sale or lease, or withdrawal without notice. All Floor plans, property lines, areas, and dimensions are approximate and for illustration purposes only. DHRP | DH Realty Partners, Inc. ©2024. A Texas Corporation.

