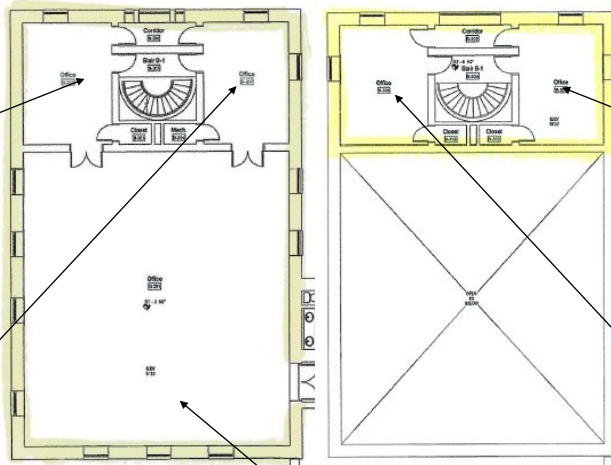


4,597 RSF office suite for lease | East Cambridge

Location between Kendall Square and Cambridge Crossing. Easy parking (metered, garage parking).

47 Thorndike St 2-1 3-1

12+ minute drive to Logan. 0.2 mile to the Lechmere T station. 1 block to the free EZRide shuttle (N Station to Cport)



Large open office and 2 meeting rooms on the 2nd floor. (2-1)
2 meeting rooms and shared kitchenette on the 3rd floor. (3-1)

Patrick Verbeke | KW Commercial | KW Boston NW | Cambridge, MA
617-230-3638 | Patrick@ValtiRealEstate.com | ValtiCommercial.com

