

**3888 S. Sherwood Forest Boulevard
Baton Rouge, LA 70816**

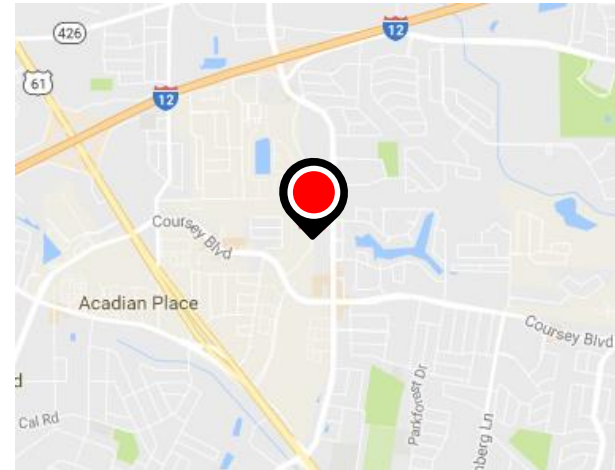
Office Park

Office Space For Lease



Property Features

- Suite F- +/- 2,900 SF
- \$16/SF Modified Gross
- Class A Finishes
- Owner Pays: Water/Sewer, Real Estate Taxes, Hazard Insurance, & Maintenance
- Free Rent Available with Term Leases



NAILatter & Blum

Jonann Stutzman

225.614.7675

jonann@latterblum.com

Ty Gose

225.295.0800

ty@latterblum.com

LICENSED IN LOUISIANA. NO WARRANTY OR REPRESENTATION, EXPRESS OR IMPLIED, IS MADE AS TO THE ACCURACY OF THE INFORMATION CONTAINED HEREIN, AND THE SAME IS SUBMITTED SUBJECT TO ERRORS, OMISSIONS, CHANGE OF PRICE, RENTAL OR OTHER CONDITIONS, PRIOR SALE, LEASE OR FINANCING, OR WITHDRAWAL WITHOUT NOTICE, AND OF ANY SPECIAL LISTING CONDITIONS IMPOSED BY OUR PRINCIPALS NO WARRANTIES OR REPRESENTATIONS ARE MADE AS TO THE CONDITION OF THE PROPERTY OR ANY HAZARDS CONTAINED THEREIN ARE ANY TO BE IMPLIED.

1700 City Farm Drive
Baton Rouge, LA 70806 USA
225.295.0800

www.latterblum.com

**3888 S. Sherwood Forest Boulevard
Baton Rouge, LA 70816**

Office Park

Office Space For Lease



NALatter & Blum

Jonann Stutzman
225.614.7675
jonann@latterblum.com

Ty Gose
225.295.0800
ty@latterblum.com

LICENSED IN LOUISIANA. NO WARRANTY OR REPRESENTATION, EXPRESS OR IMPLIED, IS MADE AS TO THE ACCURACY OF THE INFORMATION CONTAINED HEREIN, AND THE SAME IS SUBMITTED SUBJECT TO ERRORS, OMISSIONS, CHANGE OF PRICE, RENTAL OR OTHER CONDITIONS, PRIOR SALE, LEASE OR FINANCING, OR WITHDRAWAL WITHOUT NOTICE, AND OF ANY SPECIAL LISTING CONDITIONS IMPOSED BY OUR PRINCIPALS NO WARRANTIES OR REPRESENTATIONS ARE MADE AS TO THE CONDITION OF THE PROPERTY OR ANY HAZARDS CONTAINED THEREIN ARE ANY TO BE IMPLIED.

1700 City Farm Drive
Baton Rouge, LA 70806 USA
225.295.0800
www.latterblum.com

**3888 S. Sherwood Forest Boulevard
Baton Rouge, LA 70816**

Office Park

Office Space For Lease



NALatter & Blum

Jonann Stutzman

225.614.7675

jonann@latterblum.com

Ty Gose

225.295.0800

ty@latterblum.com

LICENSED IN LOUISIANA. NO WARRANTY OR REPRESENTATION, EXPRESS OR IMPLIED, IS MADE AS TO THE ACCURACY OF THE INFORMATION CONTAINED HEREIN, AND THE SAME IS SUBMITTED SUBJECT TO ERRORS, OMISSIONS, CHANGE OF PRICE, RENTAL OR OTHER CONDITIONS, PRIOR SALE, LEASE OR FINANCING, OR WITHDRAWAL WITHOUT NOTICE, AND OF ANY SPECIAL LISTING CONDITIONS IMPOSED BY OUR PRINCIPALS NO WARRANTIES OR REPRESENTATIONS ARE MADE AS TO THE CONDITION OF THE PROPERTY OR ANY HAZARDS CONTAINED THEREIN ARE ANY TO BE IMPLIED.

1700 City Farm Drive
Baton Rouge, LA 70806 USA
225.295.0800

www.latterblum.com

**3888 S. Sherwood Forest Boulevard
Baton Rouge, LA 70816**

Office Park

Office Space For Lease



NALatter & Blum

Jonann Stutzman

225.614.7675

jonann@latterblum.com

Ty Gose

225.295.0800

ty@latterblum.com

LICENSED IN LOUISIANA. NO WARRANTY OR REPRESENTATION, EXPRESS OR IMPLIED, IS MADE AS TO THE ACCURACY OF THE INFORMATION CONTAINED HEREIN, AND THE SAME IS SUBMITTED SUBJECT TO ERRORS, OMISSIONS, CHANGE OF PRICE, RENTAL OR OTHER CONDITIONS, PRIOR SALE, LEASE OR FINANCING, OR WITHDRAWAL WITHOUT NOTICE, AND OF ANY SPECIAL LISTING CONDITIONS IMPOSED BY OUR PRINCIPALS NO WARRANTIES OR REPRESENTATIONS ARE MADE AS TO THE CONDITION OF THE PROPERTY OR ANY HAZARDS CONTAINED THEREIN ARE ANY TO BE IMPLIED.

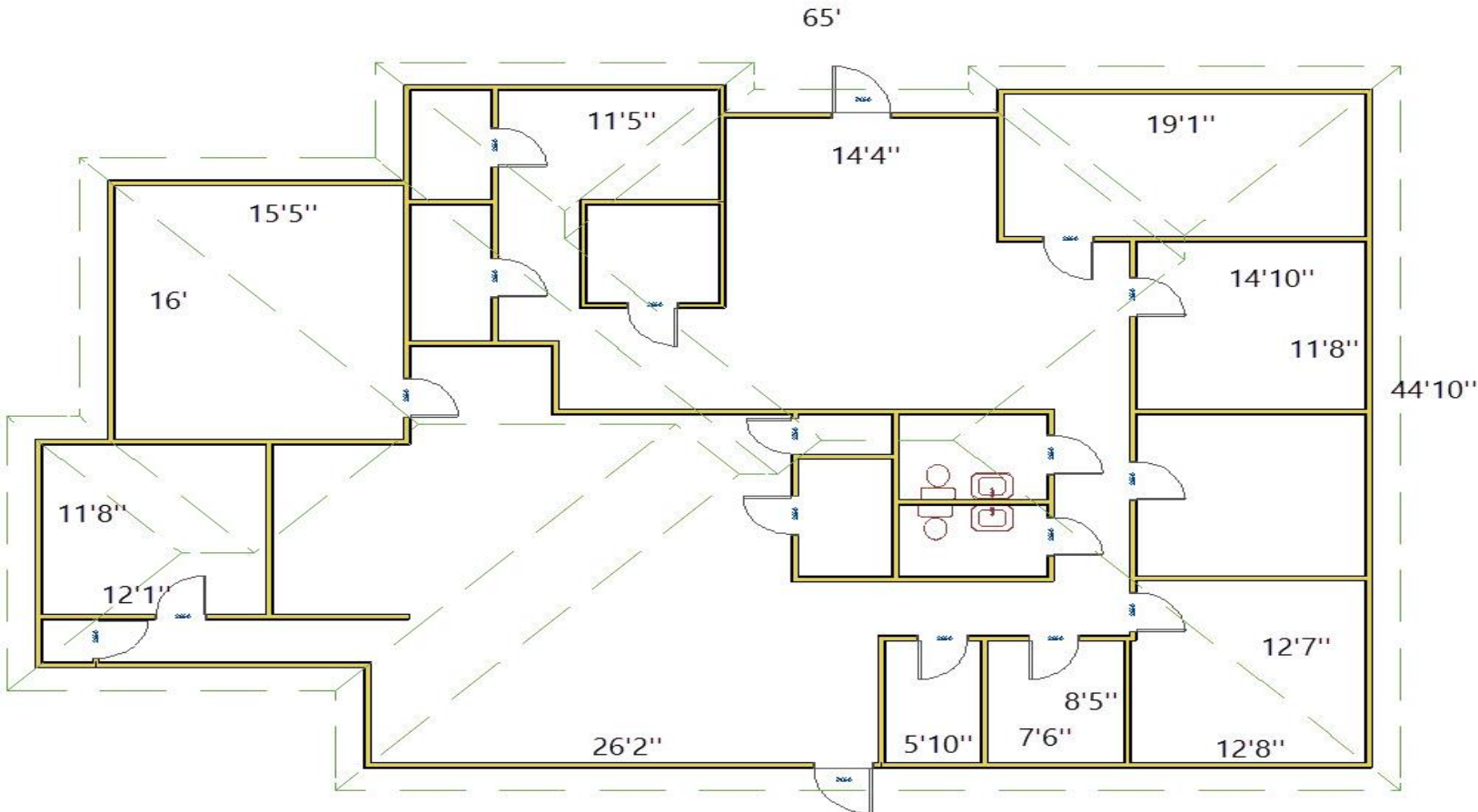
1700 City Farm Drive
Baton Rouge, LA 70806 USA
225.295.0800

www.latterblum.com

3888 S. Sherwood Forest Boulevard
Baton Rouge, LA 70816

Office Park

Office Space For Lease



NALLatter & Blum

Jonann Stutzman

225.614.7675

jonann@latterblum.com

Ty Gose

225.295.0800

ty@latterblum.com

LICENSED IN LOUISIANA. NO WARRANTY OR REPRESENTATION, EXPRESS OR IMPLIED, IS MADE AS TO THE ACCURACY OF THE INFORMATION CONTAINED HEREIN, AND THE SAME IS SUBMITTED SUBJECT TO ERRORS, OMISSIONS, CHANGE OF PRICE, RENTAL OR OTHER CONDITIONS, PRIOR SALE, LEASE OR FINANCING, OR WITHDRAWAL WITHOUT NOTICE, AND OF ANY SPECIAL LISTING CONDITIONS IMPOSED BY OUR PRINCIPALS NO WARRANTIES OR REPRESENTATIONS ARE MADE AS TO THE CONDITION OF THE PROPERTY OR ANY HAZARDS CONTAINED THEREIN ARE ANY TO BE IMPLIED.

CREATED 3/30/2017

1700 City Farm Drive
Baton Rouge, LA 70806 USA
225.295.0800

www.latterblum.com