

AVAILABLE
FOR SALE
4.48 ACRES

Argonne Woods Drive

Woodridge, Illinois

One Oakbrook Terrace
Suite 400
Oakbrook Terrace, Illinois 60181
+1 630 932 1234

hiffman.com

PROPERTY SPECIFICATIONS

- Available Land: 4.48 Acres
- Zoning: ORI
- Parcel PIN: 10-17-111-011-0000
- 2023 R.E. Tax: \$24,470
- Close proximity to I-55 and I-355
- Highly desirable infill location
- Sale Price: STO



4.48 ACRE
SITE



1 MILE TO I-55 VIA
LEMONT ROAD



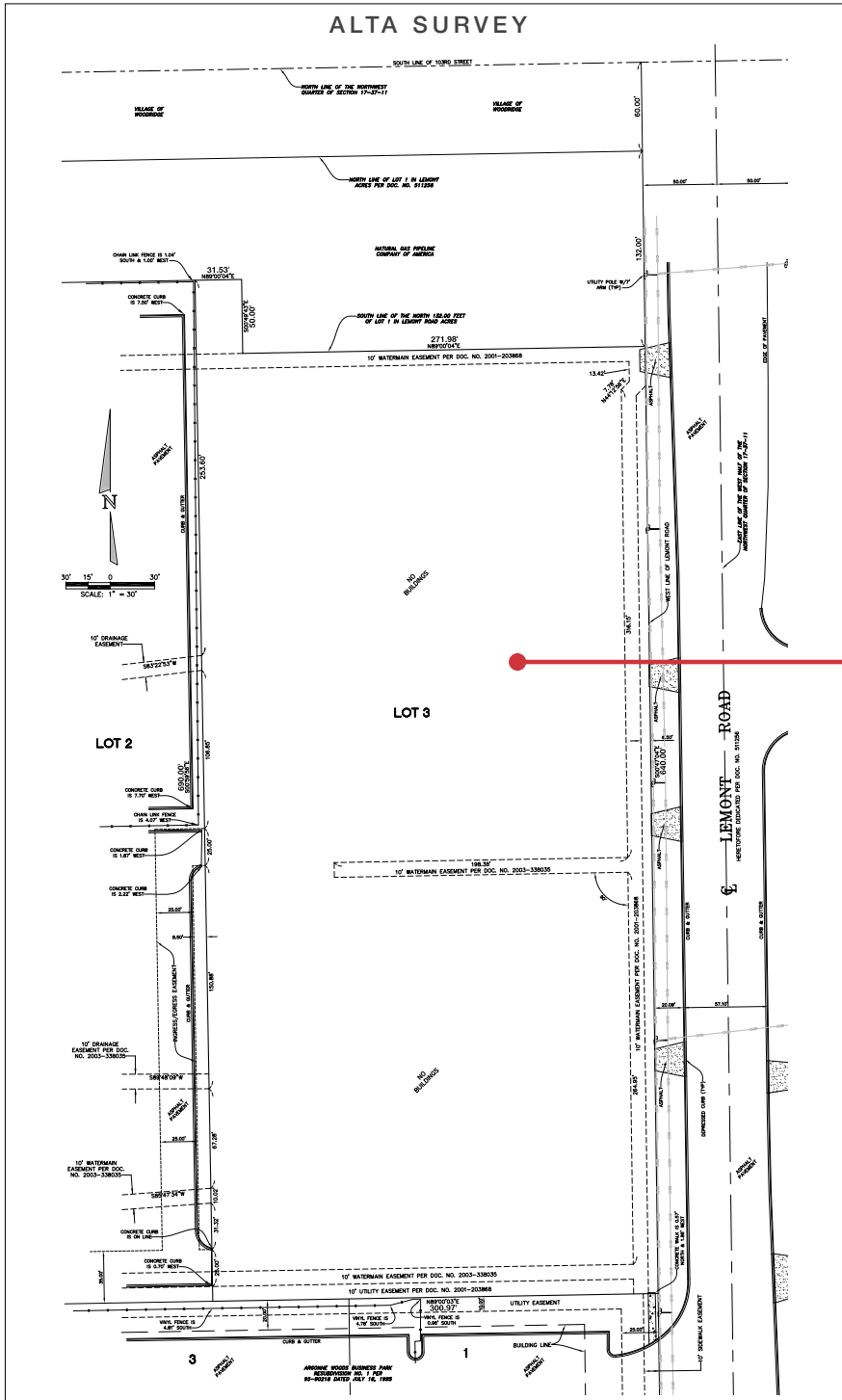
16.8 MILES TO/FROM
MIDWAY INT'L AIRPORT

Contact

John Whitehead
630 693 0643
jwhitehead@hiffman.com

Jack Brennan
630 317 0754
jbrennan@hiffman.com

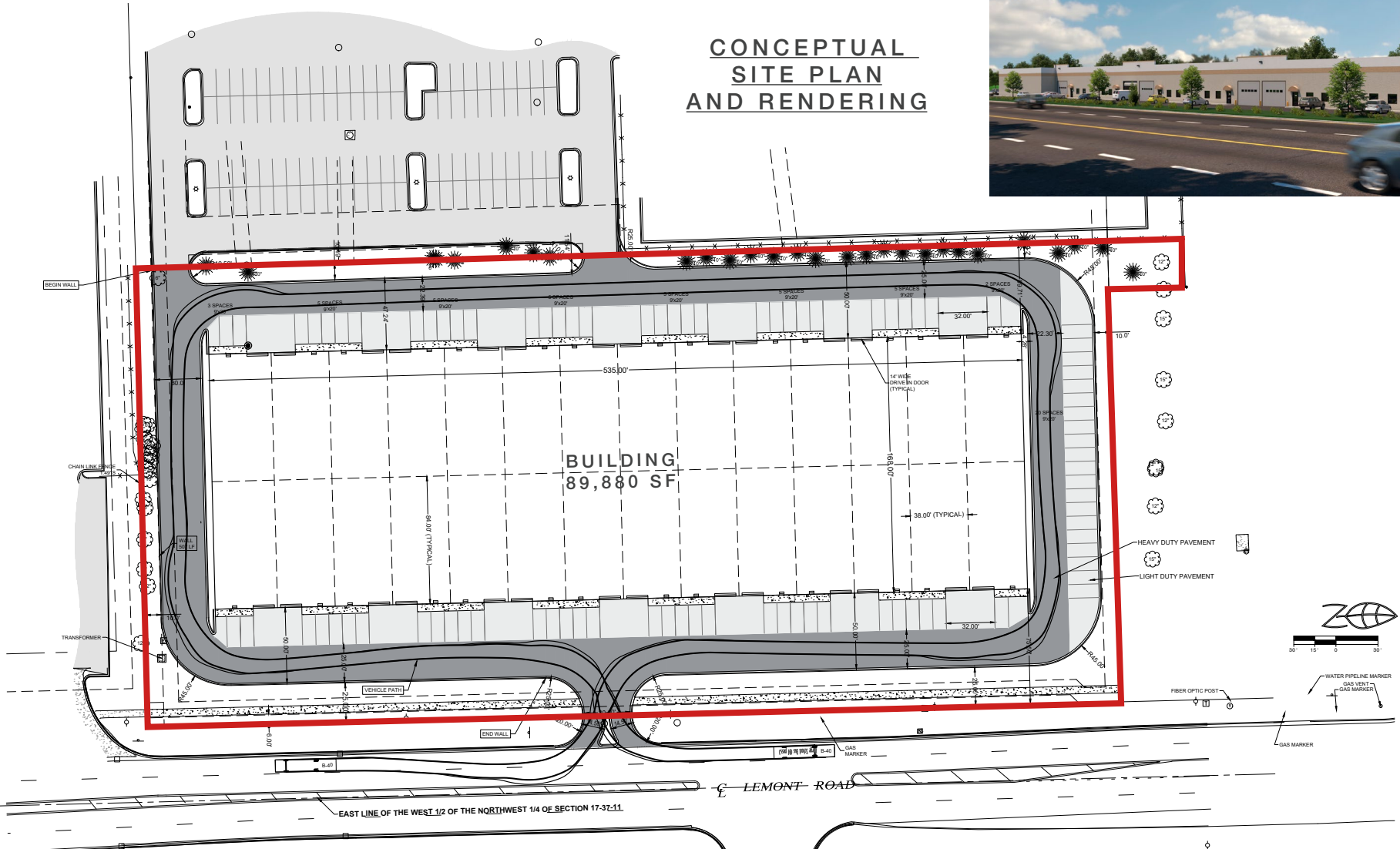
NAI Hiffman
Commercial Real Estate Services, Worldwide



KEY DISTANCES	MILES (ONE-WAY)	MINUTES (ONE-WAY)
I-55 / LEMONT RD	1.0	2
I-355 / I-55	2.7	4
I-55 / HWY 53	5.2	6
I-294 / I-55	7.6	10
I-88 / I-355	11.7	14
I-80 / I-55	15.5	15
MIDWAY INTERNATIONAL AIRPORT	16.8	31
O'HARE INTERNATIONAL AIRPORT	26.0	34
DOWNTOWN CHICAGO "LOOP" VIA I-55	24.6	46



CONCEPTUAL SITE PLAN AND RENDERING



Contact

John Whitehead
630 693 0643
jwhitehead@hiffman.com

Jack Brennan
630 317 0754
jbrennan@hiffman.com

One Oakbrook Terrace
Suite 400
Oakbrook Terrace, Illinois 60181
+1 630 932 1234

hiffman.com