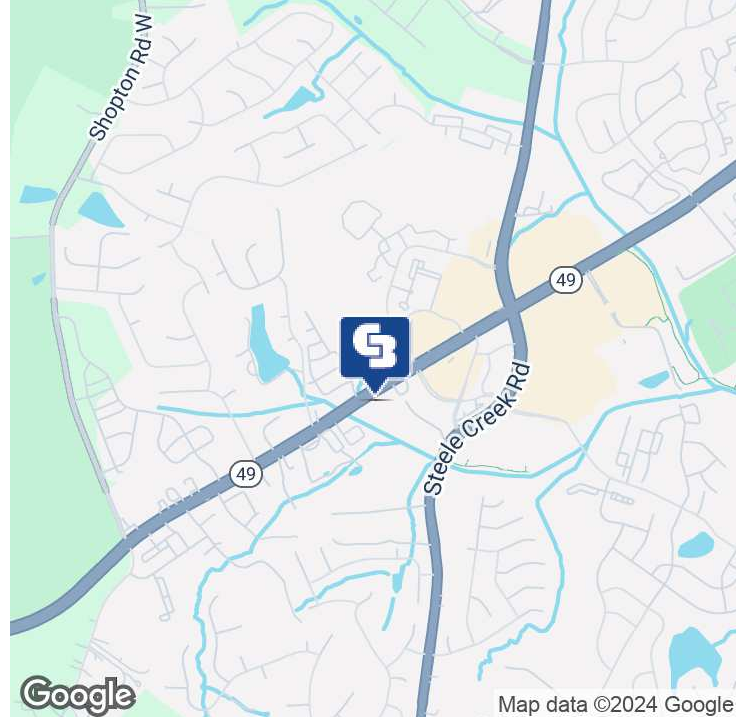




COMMERCIAL REZONING LAND OPPORTUNITY IN STEELE CREEK AREA OF CHARLOTTE

13323 and 13325 S. Tryon St., Charlotte, NC 28278

SALE



OFFERING SUMMARY

Sale Price:	\$1,350,000
Available SF:	
Lot Size:	1.667 Acres
Zoning:	N1-A
Market:	Charlotte
Submarket:	Southwest
Traffic Count:	31,000
Price / SF:	\$18.59

PROPERTY OVERVIEW

Excellent potential commercial land development opportunity in growing area of Steele Creek on South Tryon St.

PROPERTY HIGHLIGHTS

- Next to Atrium Health Steele Creek Emergency Care
- 72,745 total square feet
- Surrounded by healthy mix of residential and commercial properties
- Ask for available survey
- Asking price reflects a successful rezone to commercial
- Ideal for office, medical, restaurant, daycare, motel.
- Parcel id#s: 21912110, 21912111

CBCWORLDWIDE.COM

Peter Rieke
704 575 1993
peter.rieke@cbcncr.com

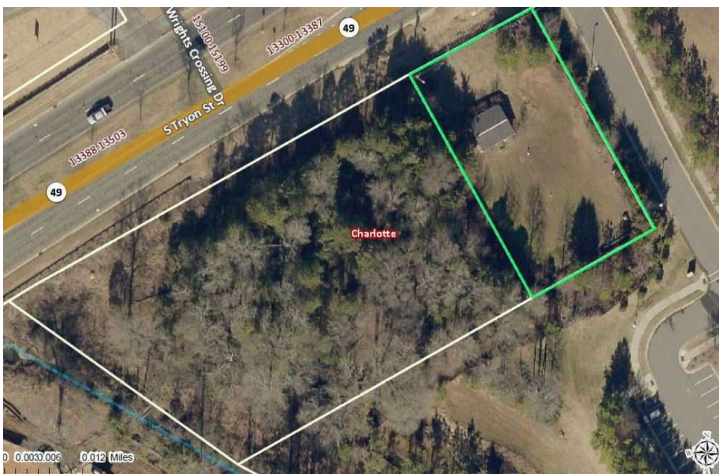
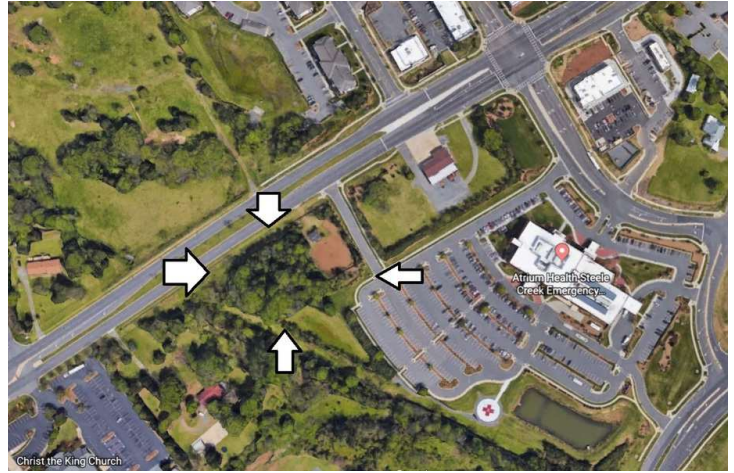




COMMERCIAL REZONING LAND OPPORTUNITY IN STEELE CREEK AREA OF CHARLOTTE

13323 and 13325 S. Tryon St., Charlotte, NC 28278

SALE



CBCWORLDWIDE.COM

Peter Rieke
704 575 1993
peter.rieke@cbcrrt.com

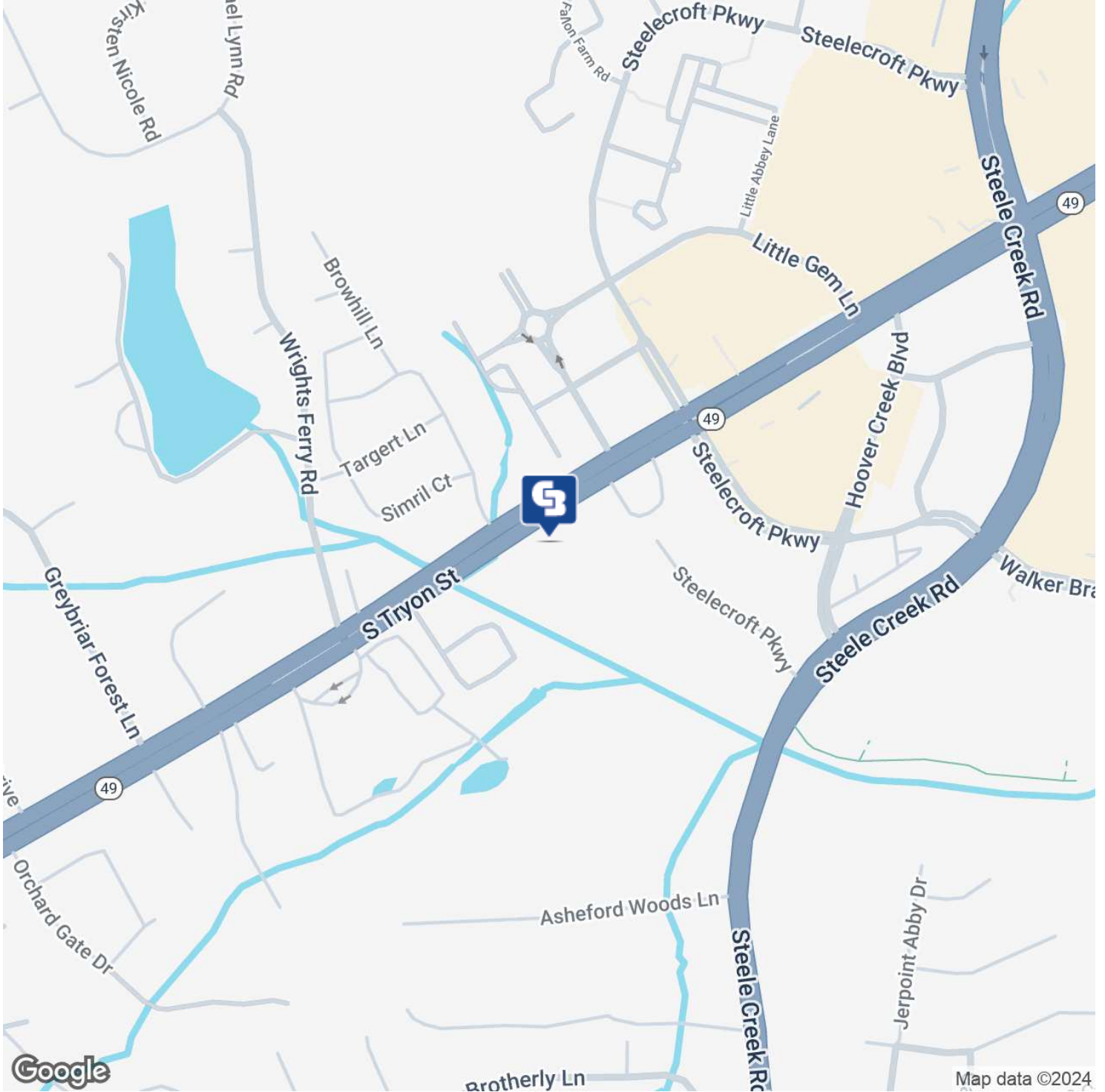
 **COLDWELL
BANKER
COMMERCIAL**
COLDWELL BANKER
COMMERCIAL REALTY



COMMERCIAL REZONING LAND OPPORTUNITY IN STEELE CREEK AREA OF CHARLOTTE

13323 and 13325 S. Tryon St., Charlotte, NC 28278

SALE



CBCWORLDWIDE.COM

Peter Rieke
704 575 1993
peter.rieke@cbcnc.com





COMMERCIAL REZONING LAND OPPORTUNITY IN STEELE CREEK AREA OF CHARLOTTE

13323 and 13325 S. Tryon St., Charlotte, NC 28278

SALE



Map data ©2024 Google Imagery ©2024 Airbus, CNES / Airbus, Maxar Technologies

CBCWORLDWIDE.COM

Peter Rieke
704 575 1993
peter.riek@cbcrrt.com



**COLDWELL
BANKER
COMMERCIAL**

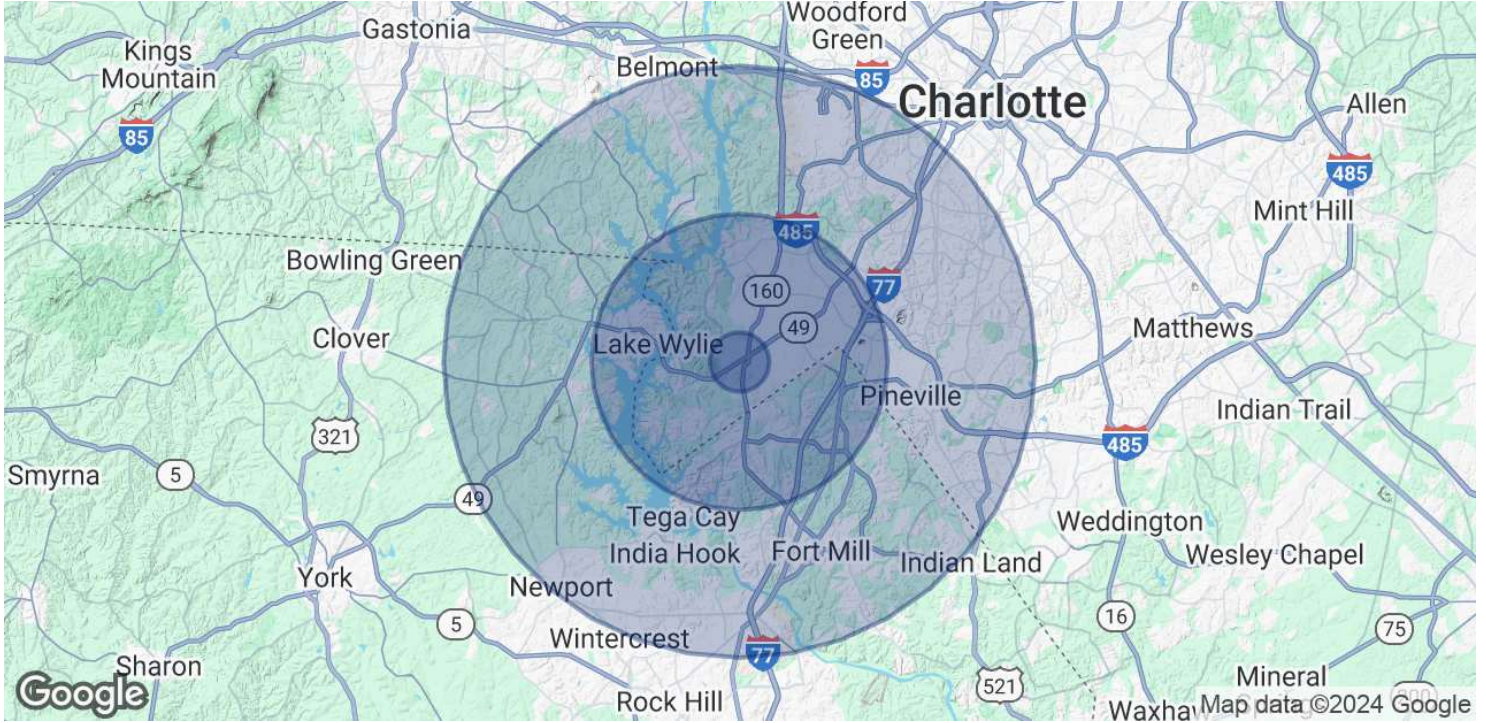
COLDWELL BANKER
COMMERCIAL REALTY



COMMERCIAL REZONING LAND OPPORTUNITY IN STEELE CREEK AREA OF CHARLOTTE

13323 and 13325 S. Tryon St., Charlotte, NC 28278

SALE



POPULATION	1 MILE	5 MILES	10 MILES
Total Population	8,947	110,662	403,185
Average age	31.2	37.4	37.3
Average age (Male)	28.6	36.3	36.5
Average age (Female)	32.0	37.3	38.2
HOUSEHOLDS & INCOME	1 MILE	5 MILES	10 MILES
Total households	3,031	42,354	163,858
# of persons per HH	3.0	2.6	2.5
Average HH income	\$83,123	\$102,481	\$98,765
Average house value	\$239,919	\$279,179	\$277,008

* Demographic data derived from 2020 ACS - US Census

CBCWORLDWIDE.COM

Peter Rieke
704 575 1993
peter.riek@cbcncr.com

