

CARLOS DIAZ & ASSOC. ARCHITECTS, P.A.

AA 0003014

ARCHITECTURE INTERIOR DESIGN

1526 NW 89th CT
MIAMI, FLORIDA 33172
TEL: 305 599 2886
FAX: 305 599 3885

© 1991 CARLOS DIAZ & ASSOC. ARCHITECTS, P.A.
The Design and Drawings for this Project are the property of the Architect and are protected under the Copyright Protection Act.

ARCHITECTURE

CARLOS DIAZ
9551
1526 NW 89th CT
MIAMI, FL 33172
Ph: (305) 599-2886

AS BUILT FOR:

7999 NW 81st Place
MEDLEY, FLORIDA

GENERAL FLOOR PLAN,
SECOND FLOOR PLAN,
KEY PLAN, LEGEND,
AND NOTES

SCALE AS NOTED
PROJECT NO. 151055
DATE 05-13-15

REVISIONS:

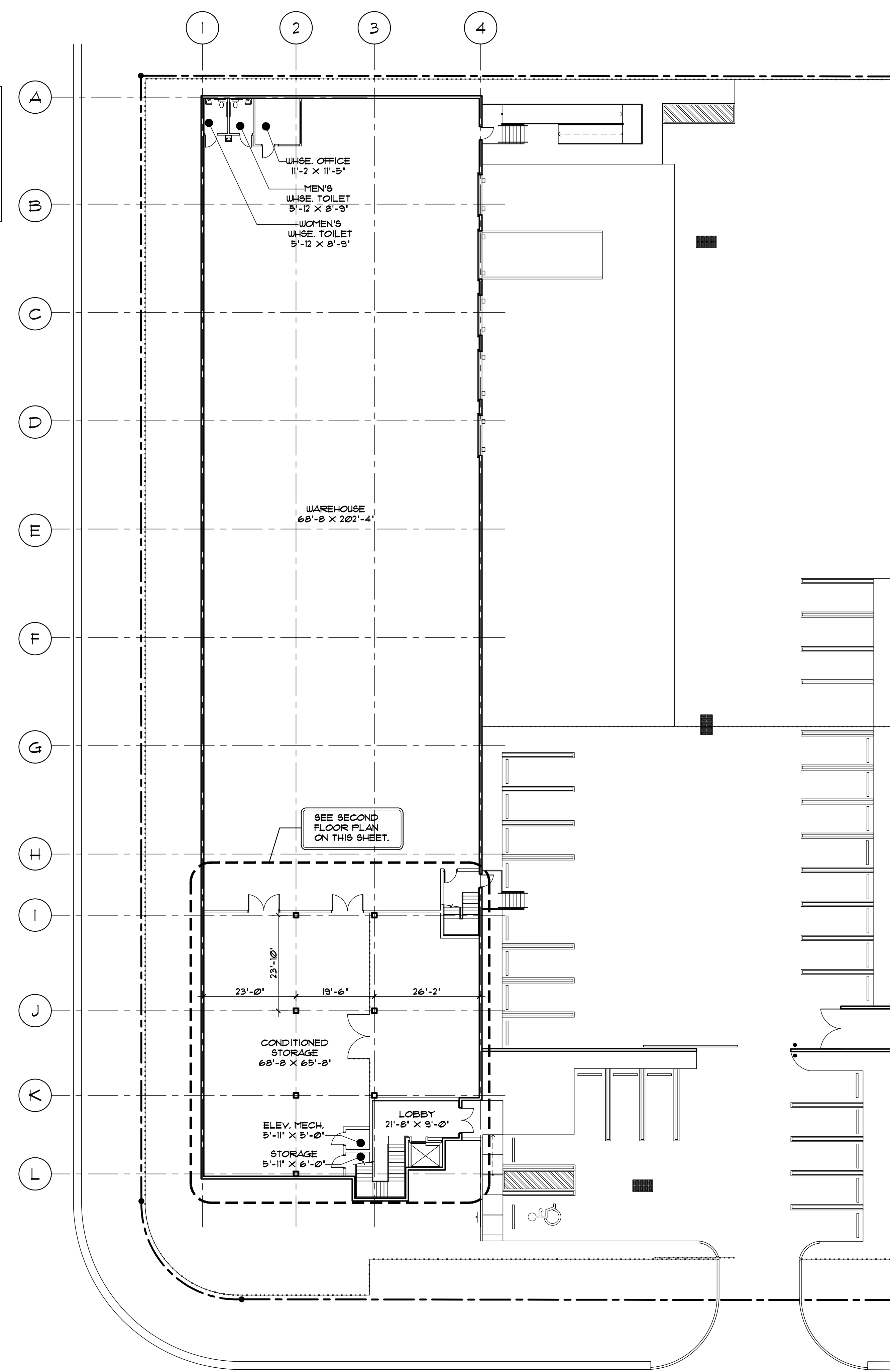
SHEET
AS-BUILT
OF 1

LEGEND:

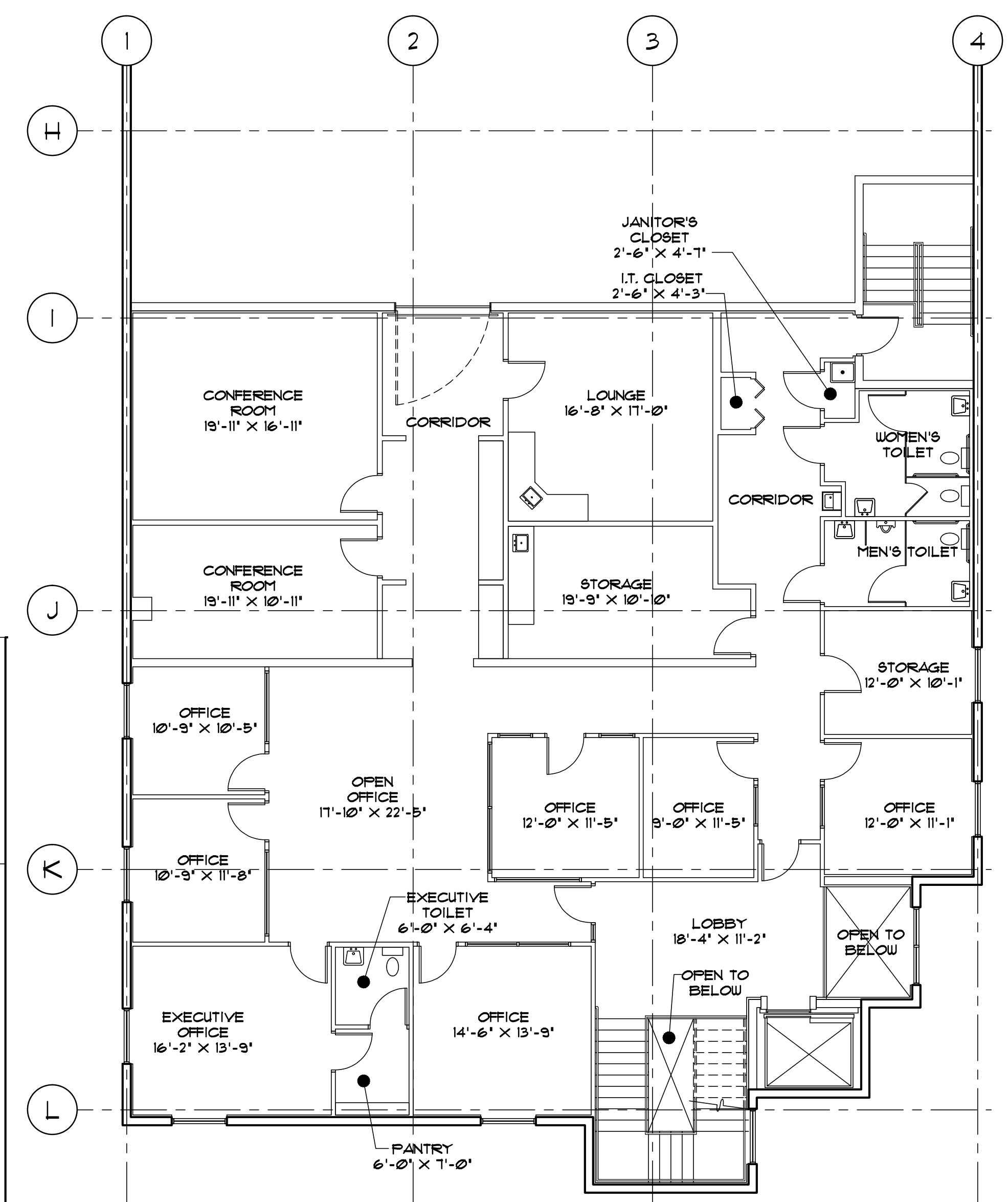
	EXT'G. EXTERIOR WALL
	EXT'G. PARTITION
	EXT'G. DOOR

BUILDING CALCULATION:

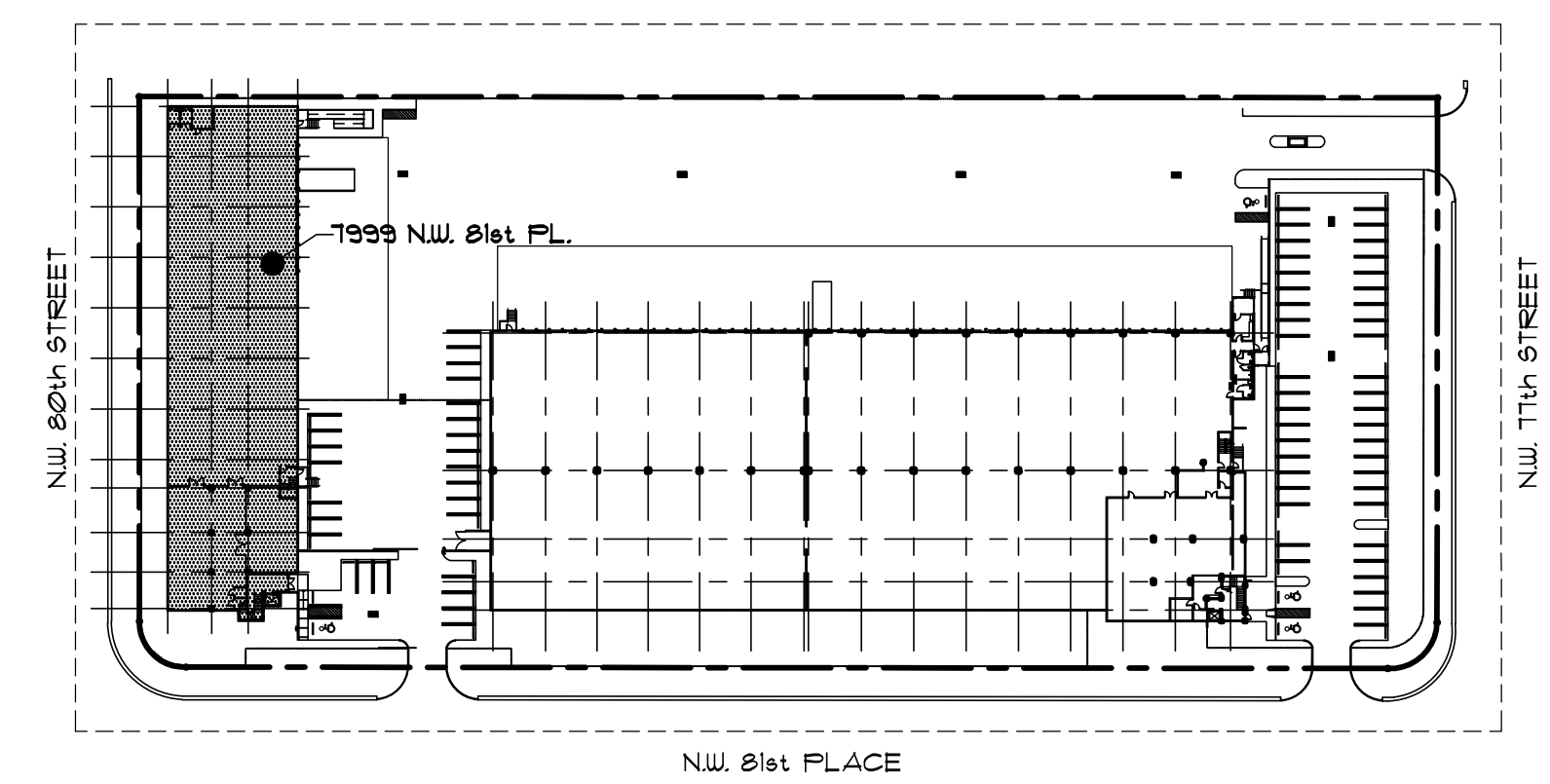
FOOTPRINT:	18, 818 S.F.
OFFICE 1st FLOOR:	562 S.F.
OFFICE 2nd FLOOR:	4, 164 S.F.
WAREHOUSE:	14, 111 S.F.
WAREHOUSE CONDITIONED:	4, 093 S.F.
TOTAL:	22, 936 S.F.
PERCENTAGE OFFICE:	20.605 %
PARKING	26 (WITH 1 H.C. SPACE)
DOCK DOORS	5
DRIVE-IN DOORS	0
TYPICAL BAY	23'-0" X 23'-10"



GENERAL FLOOR PLAN
SCALE: 1/16" = 1'-0"



SECOND FLOOR PLAN
SCALE: 1/8" = 1'-0"



KEY PLAN
N.T.S.