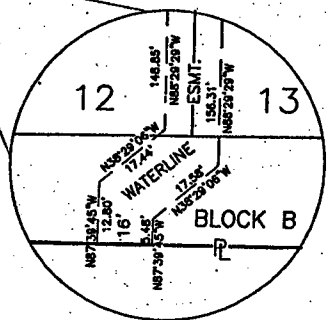
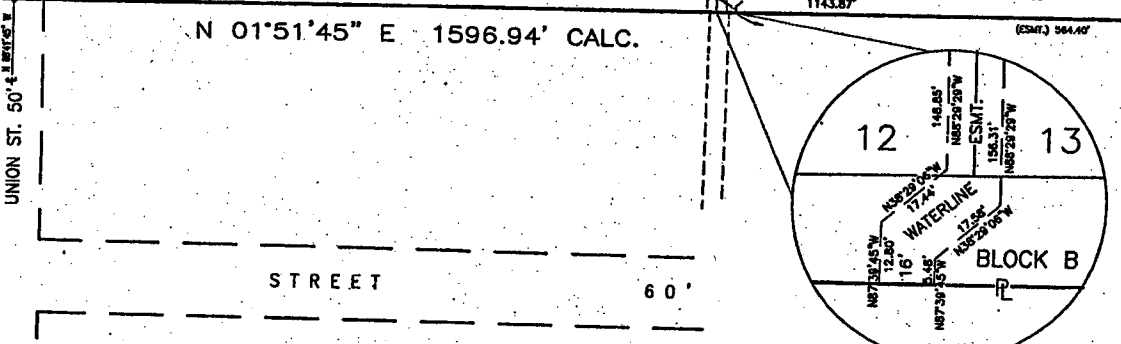
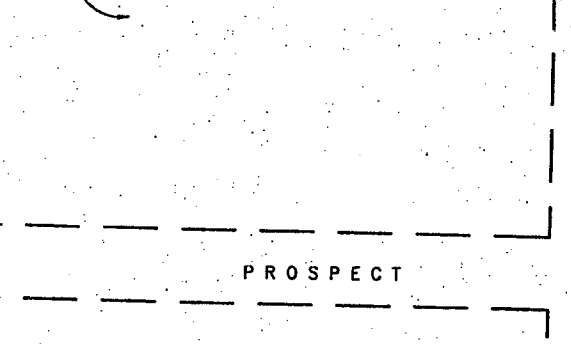
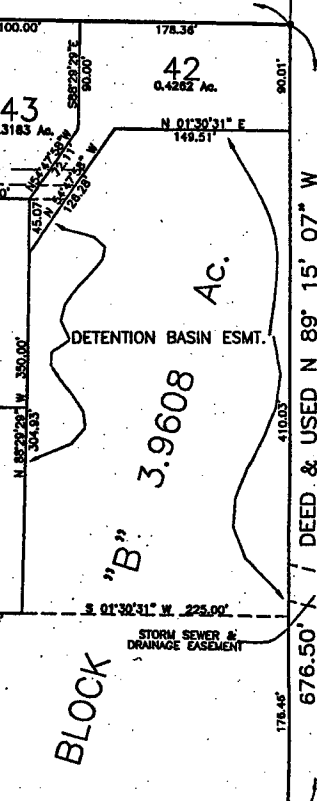
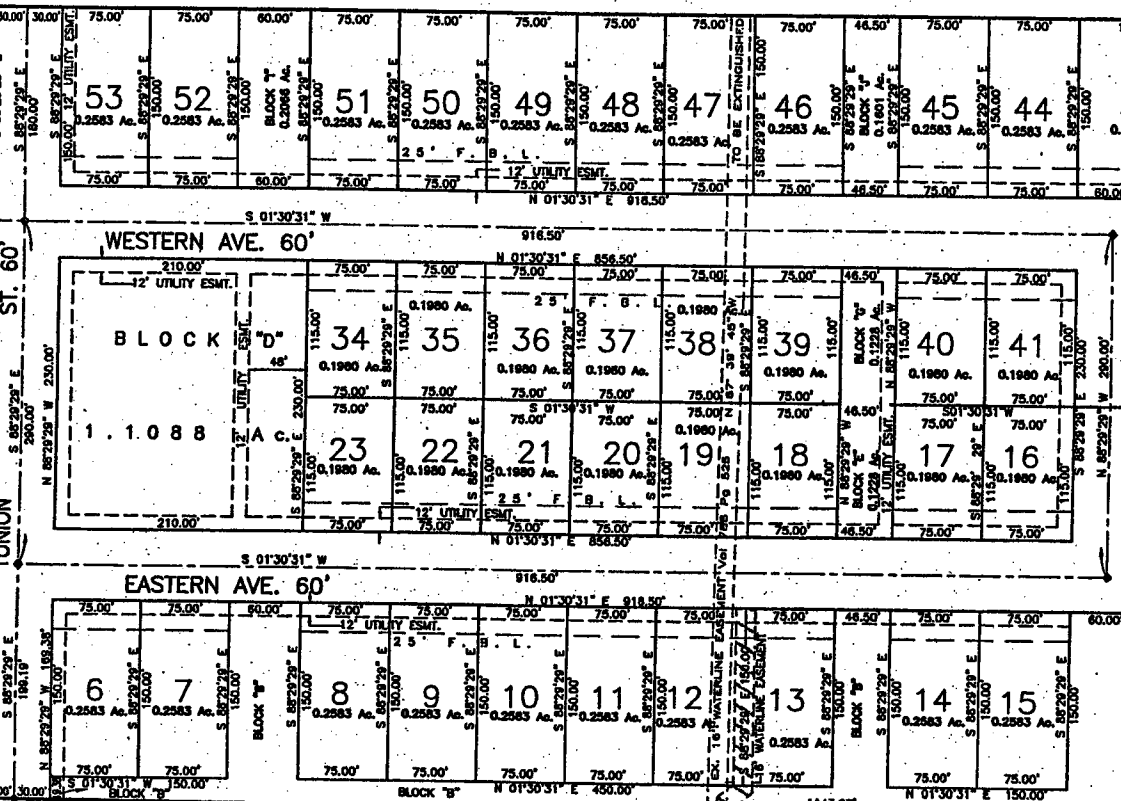
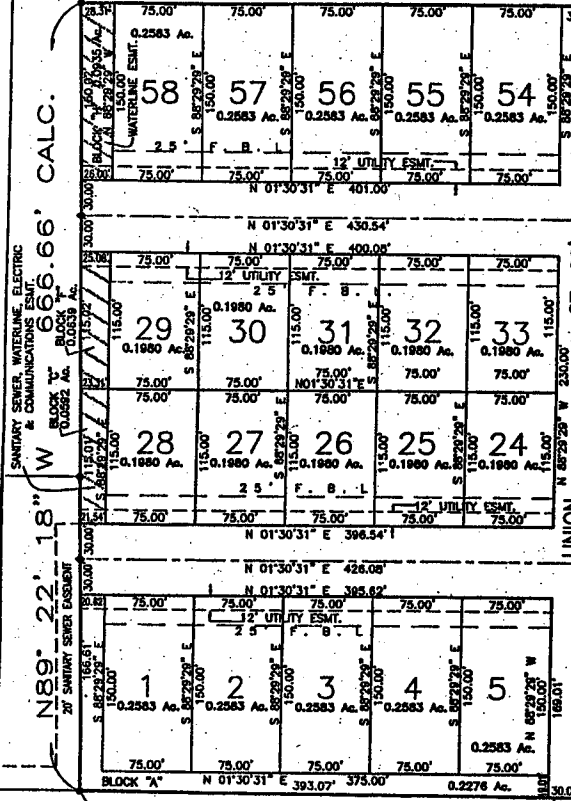




N 1° 30' 31" E 1,598.17' CALC.

N 89° 22' 18" W 666.66' CALC.



N 01° 51' 45" E 1596.94' CALC.

PROSPECT

STREET

60'

**ZWICK ASSOCIATES, INC.**  
 Engineers & Surveyors  
 8750 CERRITOS ROAD, SUITE 100, DALLAS, TEXAS 75243 (416) 236-2728

**PLAT OF PARCEL "A"**  
**FUNK SUBDIVISION**  
 CITY OF OBERLIN, LORAIN COUNTY, OHIO

Prepared by: DEH Date: JULY 1998  
 Checked by: CGG  
 Scale: 1" = 50'

O.L. 74  
O.L. 64

DEED & USED N 89° 15' 07" W

676.50'

MAPLE ST. 25' W  
N 89° 07' 19" W

178.45'

90.01'