



# FOR SALE OR LEASE DOWNTOWN OFFICE



**5210 S**  
**24TH STREET**  
BAKERSFIELD, CA 93301

## PROPERTY HIGHLIGHTS

- Located in the heart of Downtown
- Highly visibility location
- Monument signage available
- Easy access to freeways
- Located near Mercy Hospital & San Joaquin Hospital
- Located near financial, educational, and County offices.

### Available Space :

Suite 200 : ±675 RSF

### Asking Price:

\$1,395,000 (\$179/sf) \*inquire for leasing details

### Scott Salters

Director

+1 661 204 6725

scott.salters@cushwake.com

LIC. 02068579

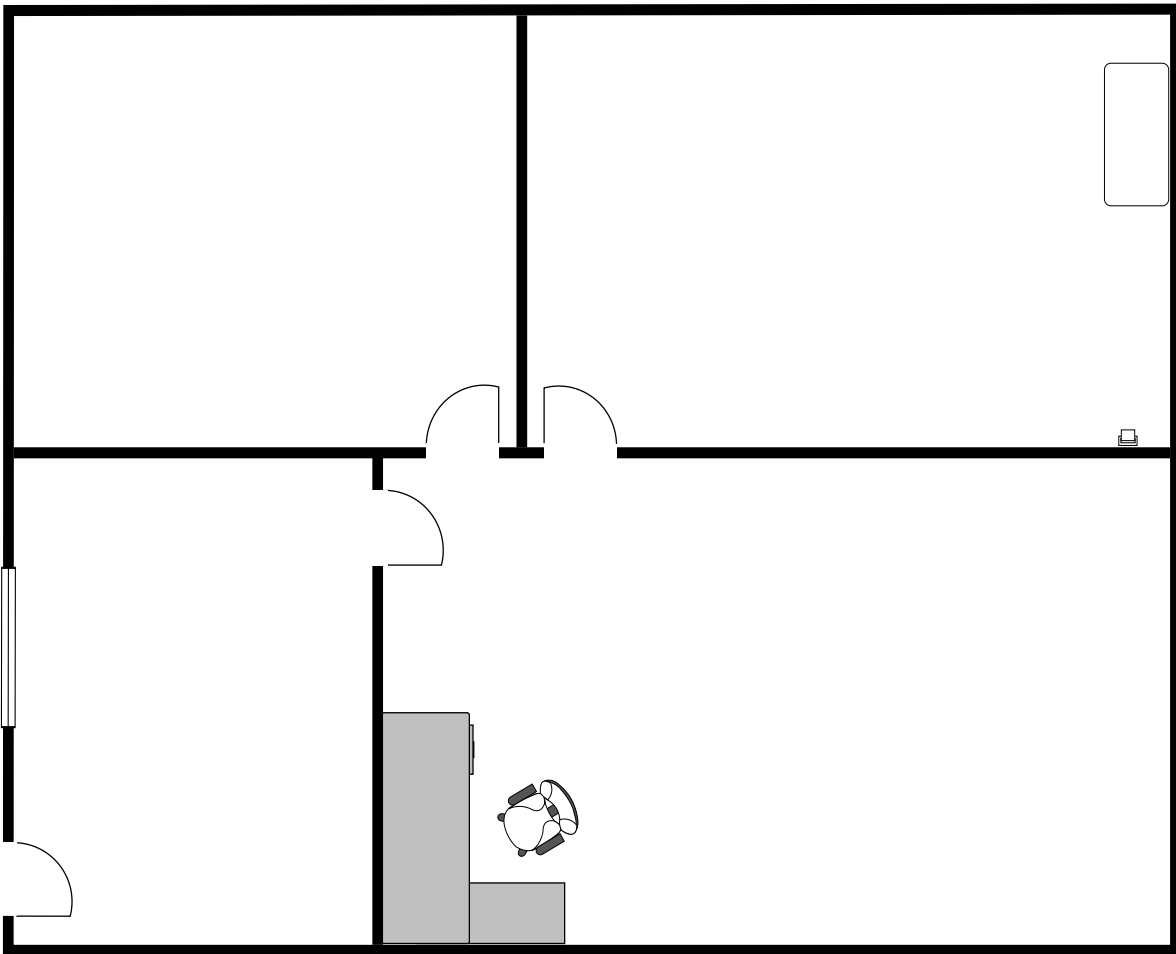
5060 California Avenue  
Suite 1000  
Bakersfield, CA 93309  
Main +1 661 327 2263  
Fax +1 661 633 3801  
[cushmanwakefield.com](http://cushmanwakefield.com)

# FLOOR PLAN

2105 24th Street

## SUITE C

±10,600sf with ±3,600sf of office and  
±7,000sf of shop space.



### Scott Salters

Director

+1 661 204 6725

scott.salters@cushwake.com

LIC. 02068579

5060 California Avenue

Suite 1000

Bakersfield, CA 93309

Main +1 661 327 2263

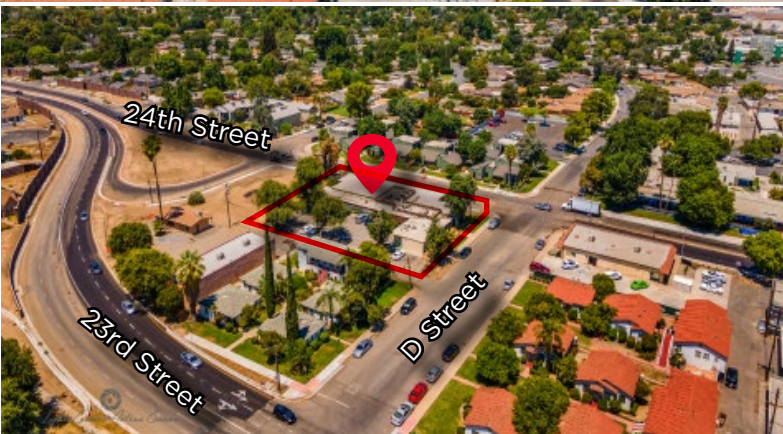
Fax +1 661 633 3801

**cushmanwakefield.com**





# PROPERTY PHOTOS



# THE LOCATION

2105 24th Street



## Scott Salters

Director

+1 661 204 6725

scott.salters@cushwake.com

LIC. 02068579

5060 California Avenue

Suite 1000

Bakersfield, CA 93309

Main +1 661 327 2263

Fax +1 661 633 3801

**cushmanwakefield.com**

Cushman & Wakefield Copyright 2015. No warranty or representation, express or implied, is made to the accuracy or completeness of the information contained herein, and same is submitted subject to errors, omissions, change of price, rental or other conditions, withdrawal without notice, and to any special listing conditions imposed by the property owner(s). As applicable, we make no representation as to the condition of the property (or properties) in question.





## Scott Salters

Director

+1 661 204 6725

scott.salters@cushwake.com

LIC. 02068579

5060 California Avenue

Suite 1000

Bakersfield, CA 93309

Main +1 661 327 2263

Fax +1 661 633 3801

cushmanwakefield.com

