

305 SE 2nd Ave & SW 3rd Street, Gainesville, FL 32601

PROPERTY FOR LEASE



\$15/SF
MODIFIED
GROSS

BUILDING SIZE: 6896 SF

LAND: 8395 SF

TYPICAL FLOOR: 3647 SF

PARKING: 11 SPACES



PROPERTY HIGHLIGHTS

Class A office space available for immediate occupancy in the heart of Gainesville's Downtown District. Adjacent to Union Street Station and the Downtown Parking Garage, this space is ideal for institutional tenancy, Law and Doctor's office. 305 SE 2nd boasts 6896 SF of private access prime office with 2 stories, update finishes and a beautiful floor plan to accommodate a multitude of uses. Step into a light filled reception area, enjoy an apple conference room for your staff meetings, as well as a multitude of private offices, a convenient kitchen area and picturesque stairway. Additionally, this space contains private parking and is on a major bus line. Adjacent to excellent restaurants and entertainment venues, there is no better private space available in Downtown Gainesville.

LISTING
AGENT



TERESA CALLEN
TERESA@PORTALGAINESVILLE.COM
352.871.5865



www.portalgainesville.com

DISCLAIMER:
This document has been prepared by the Portal Realty for advertising and general information only. Portal Realty and its affiliates make no guarantees, representations, or warranties of any kind, expressed or implied, regarding the information including, but not limited to; warranties of content, accuracy, and reliability. Any interested party should perform their own diligence as to the accuracy of the information. Portal Realty excludes unequivocally all inferred or implied terms, conditions, and warranties arising out of this document and excludes all liability for loss and damages arising there from.

AERIAL HIGHLIGHTS

Located on 2nd Ave in the Heart of Downtown Gainesville and Bo Diddley

Located about 1 Mile from the University of Florida



TERESA CALLEN
352.871.5865



PROPERTY SUMMARY



Income
Median Household Income
\$29,059



Housing
Total Housing Units
10,882



Families & Living Arrangements
Total Households
9,015



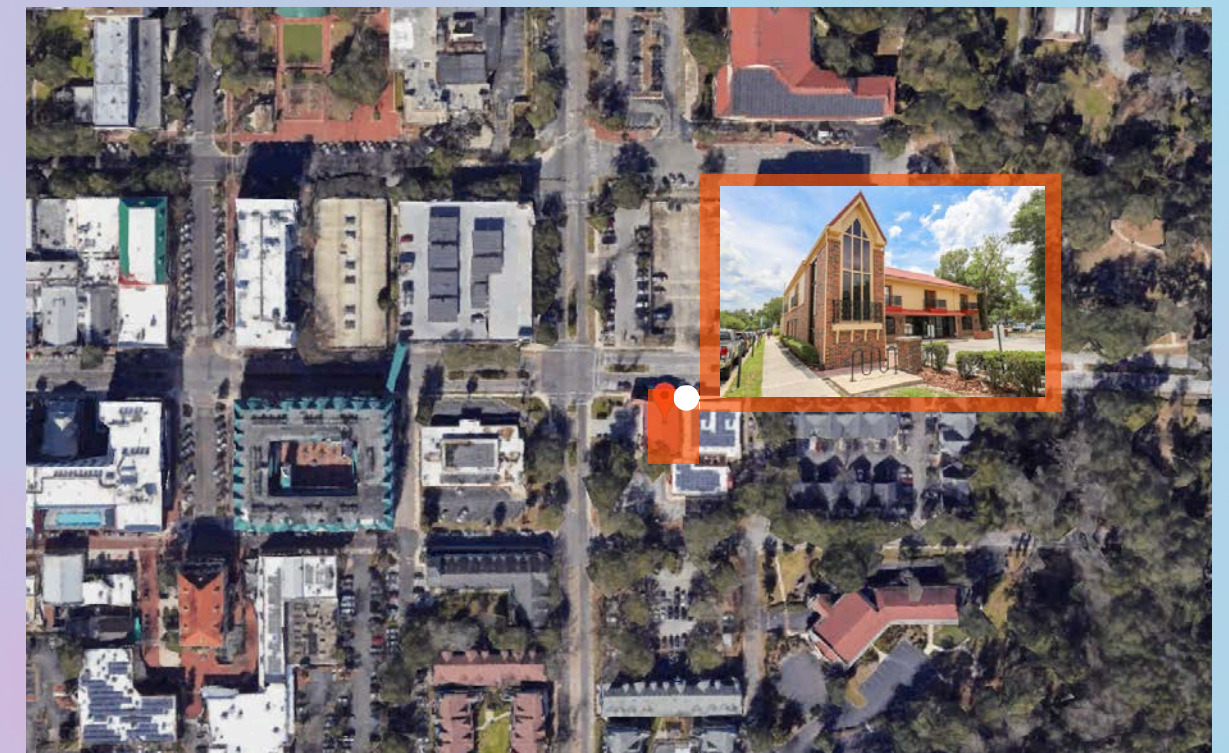
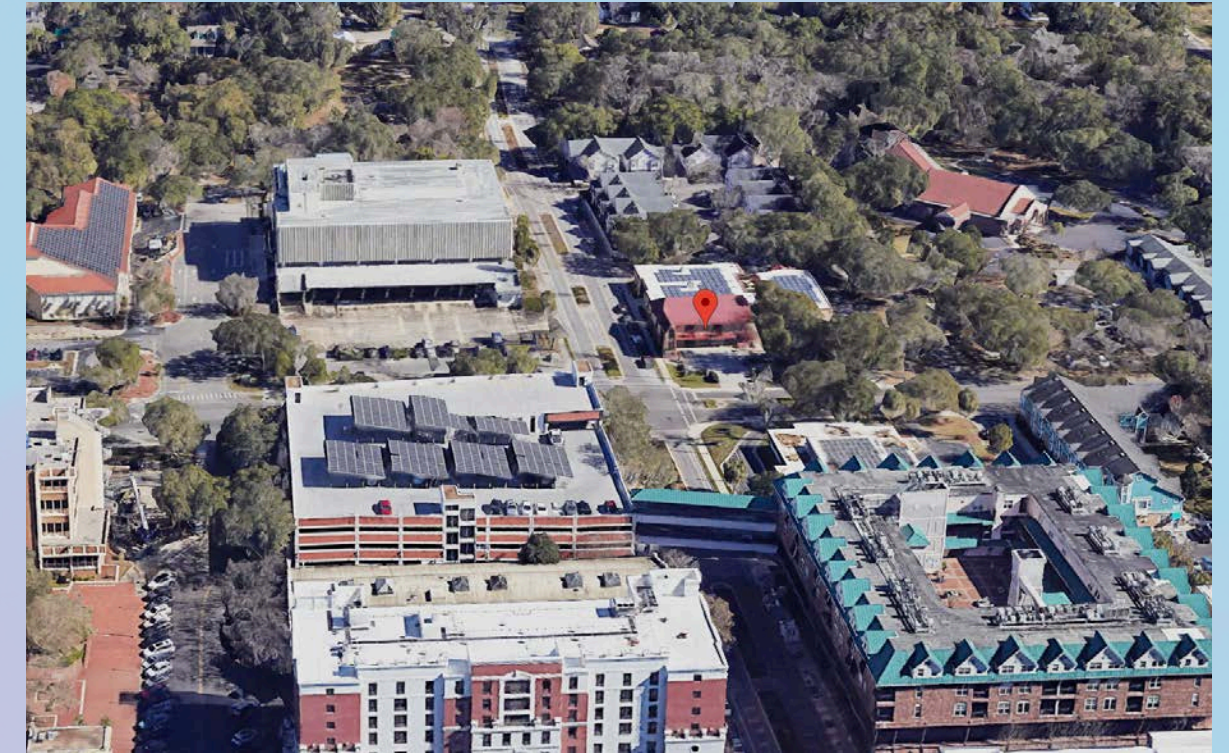
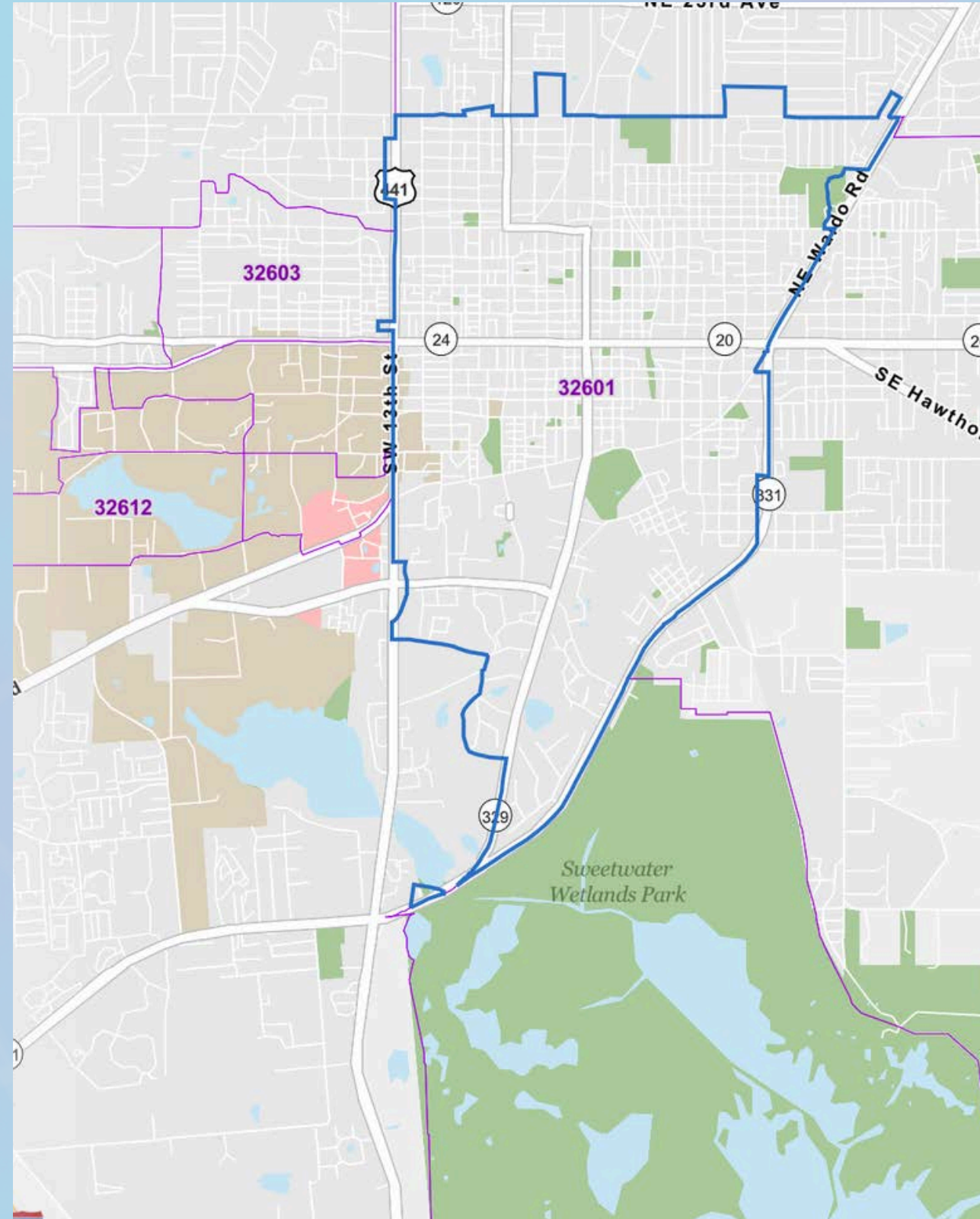
Populations and People
Total Population
22,039



Median Age
Populations & People
22.8

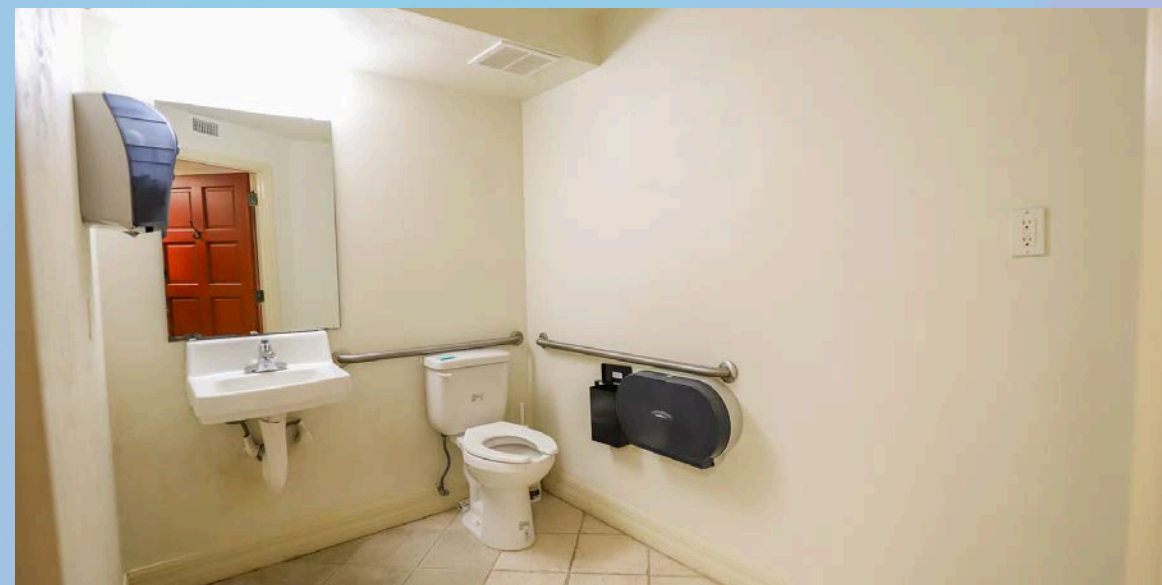


Business and Economy
Total Employer Establishments
786

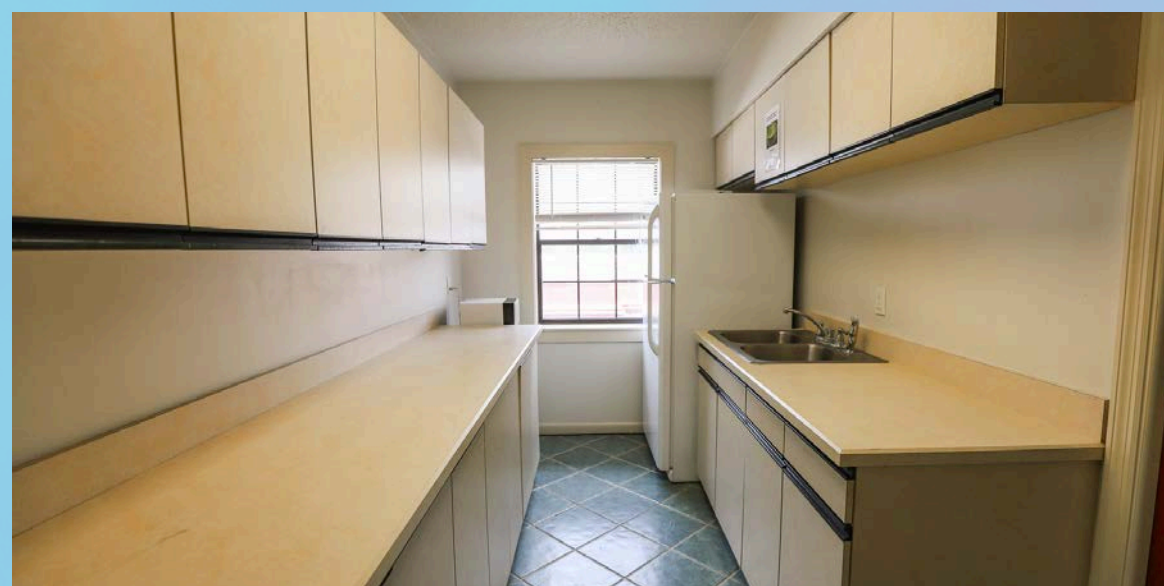
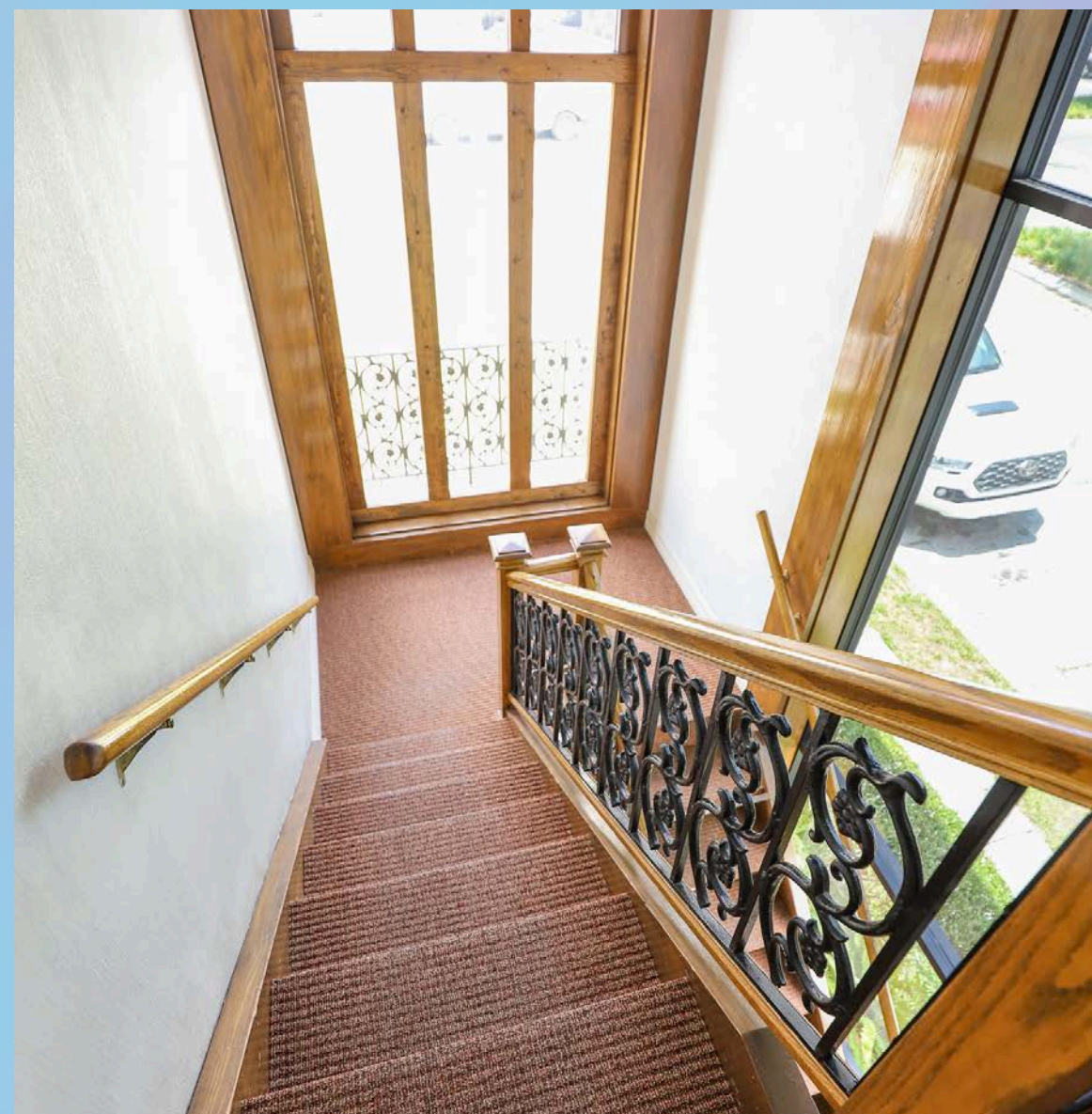
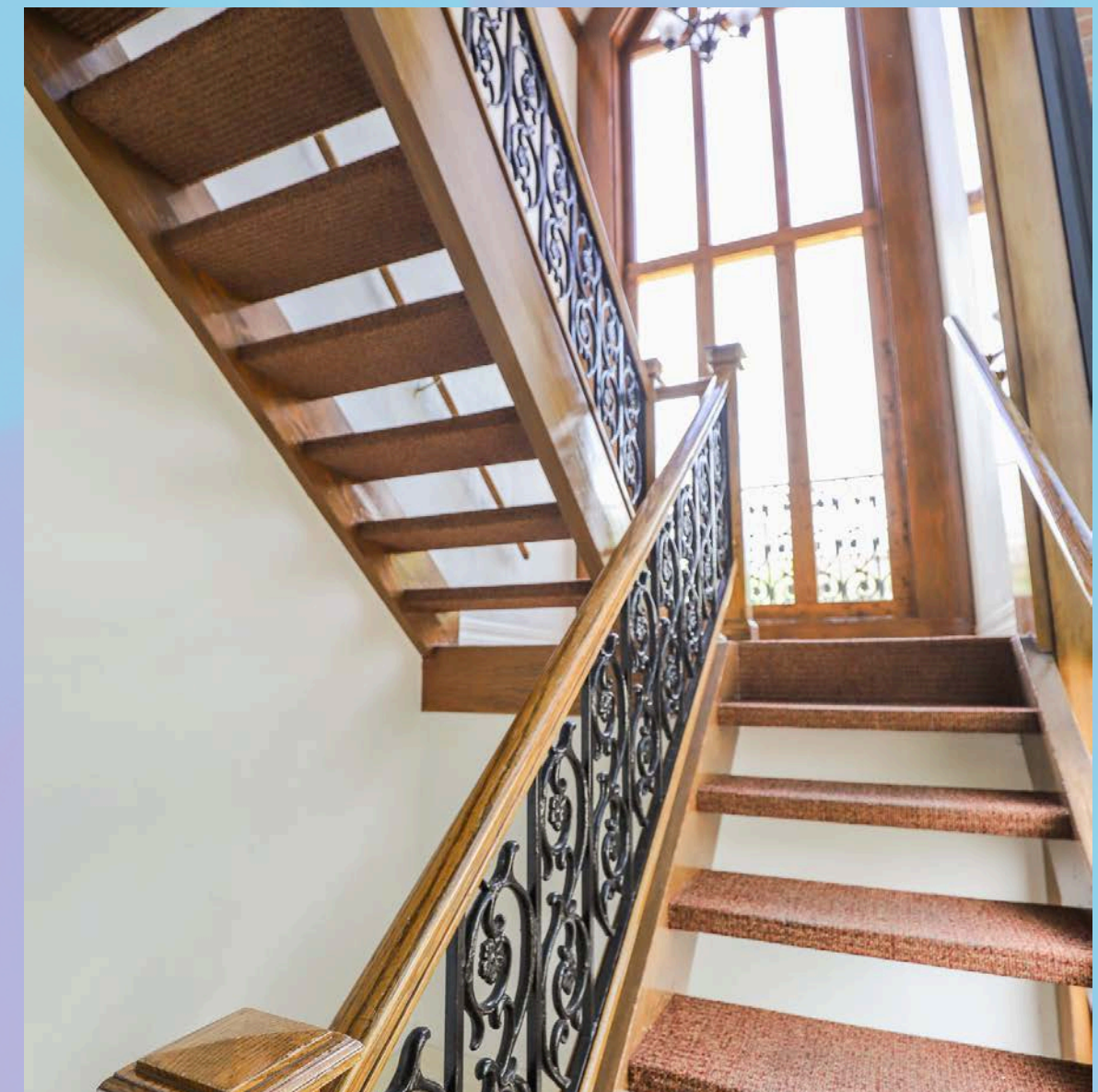
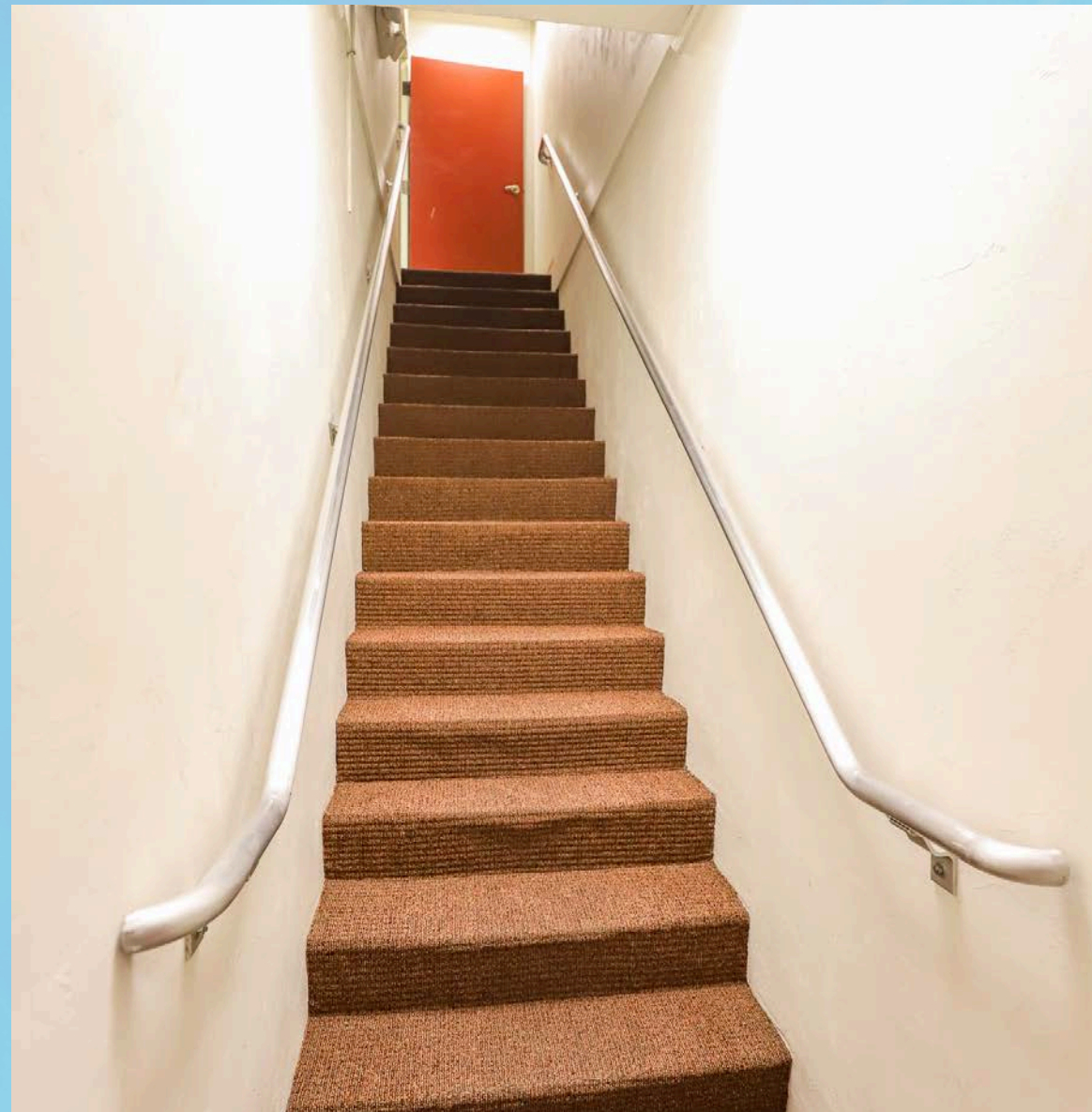


TERESA CALLEN
352.871.5865

PROPERTY PHOTOS: INTERIOR



PROPERTY PHOTOS: INTERIOR



PROPERTY PHOTOS: EXTERIOR



GAINESVILLE OVERVIEW



DOWNTOWN GAINESVILLE

Gainesville's Downtown is the symbolic heart of the city. A quintessentially quaint tight-knit gathering of shops, restaurants, theatres and parks it somehow pulls off always feeling lively, yet open and personal at the same time. By day, walk down tree-lined streets. Take in the sounds of live music as it bounces off the buildings surrounding the Bo Diddley Plaza.

Fulfill your quest for knowledge at the Alachua County Library District Headquarters and browse books, music, movies and attend educational events and programs. By night, take in a play or movie at the Hippodrome Theatre or wander by the one-of-a-kind shops and fun boutiques around Union Street Station before sitting down to dinner at a mouth-watering restaurant and enjoy a pint of local craft beer. Just like downtown itself, there's something for everyone.



INNOVATION DISTRICT

Nestled between downtown and the University of Florida, the Gainesville Innovation District is home to more than 80 thriving businesses. Join the vibrant and active community for a concert on the lawn at Midpoint Park and Eatery or attend professional networking events at The Hub. There's always something to do in district.



UNIVERSITY OF FLORIDA

The University of Florida (UF), located in Gainesville, is a top-tier public research university renowned for its academic excellence and vibrant campus life. Established in 1853, UF is one of the largest universities in the United States, serving over 56,000 students across diverse undergraduate, graduate, and professional programs. As a member of the prestigious Association of American Universities, UF is committed to advancing research, with robust programs in fields such as agriculture, engineering, business, and health sciences. The university boasts a dynamic community, rich in traditions and opportunities, where students engage in a multitude of extracurricular activities, sports, and leadership roles. With a strong emphasis on innovation and a global perspective, the University of Florida is dedicated to preparing students for success in a rapidly evolving world.