

# NORTHWAY PARK II

4845 Homestead Rd., Suite 516, Houston, TX 77028



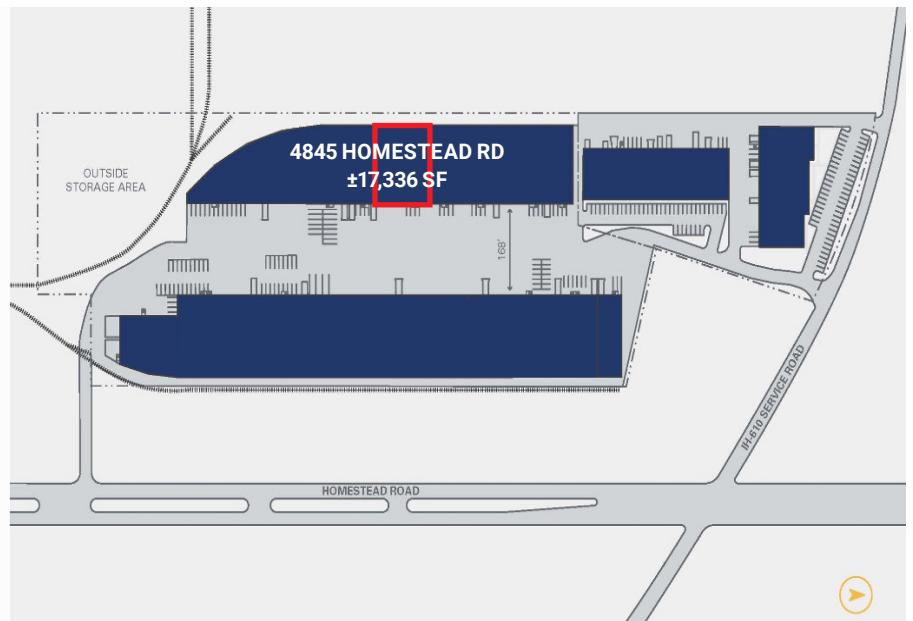
NORTHWAY PARK II | 4845 Homestead Rd., Suite 516, Houston, TX 77028

NORTHWAY PARK II



## HIGHLIGHTS

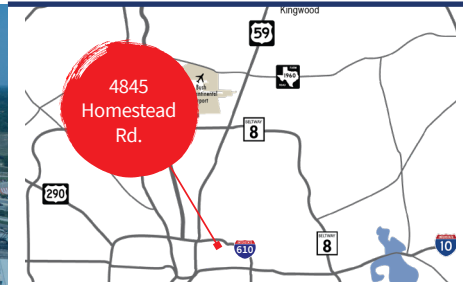
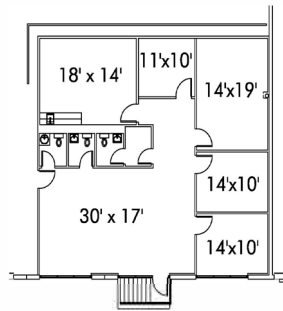
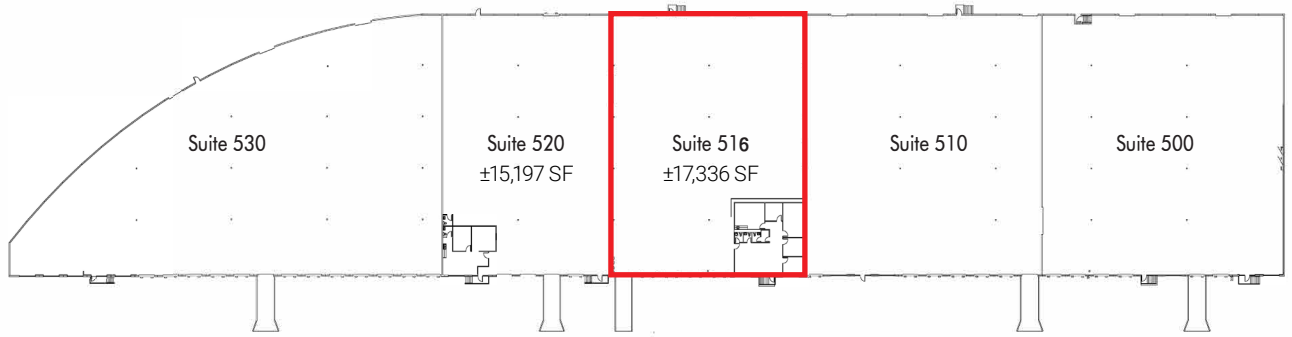
- Total SF:  $\pm 17,336$  SF
- Office:  $\pm 1,677$  SF
- (3) Dock-High Doors
- (1) Drive Ins
- Column Spacing 60'x28'
- 24' Clear Height
- Sprinklered
- White Box Walls
- LED Lights



# NORTHWAY PARK II

4845 Homestead Rd., Suite 516, Houston, TX 77028

NORTHWAY PARK II | 4845 Homestead Rd., Suite 516, Houston, TX 77028



Richard Quarles, SIOR  
713.888.4019  
richard.quarles@jll.com

Joseph Berwick  
713.425.5842  
joseph.berwick@jll.com

Eliza Klein  
713.425.1816  
eliza.klein@jll.com



Danielle Radtke  
630.586.8146  
dradtke@centerpoint.com

[centerpoint.com](http://centerpoint.com)

## Key Distances

- 610** - Immediate access
- I-10** - 3 Miles
- Downtown** - 7 Miles
- Port of Houston** - 7 Miles
- Hobby Airport** - 13 Miles
- IAH** - 18.5 Miles
- Barbours Cut** - 25 Miles
- Bayport Terminal** - 30 Miles

NORTHWAY PARK II