

2222 COTNER AVENUE

LOS ANGELES, CA 90064



FOR SUBLEASE



A DIVISION OF



**BRAND NEW RENOVATION
± 5,000 SF FREESTANDING BUILDING**



FEATURES

- Freestanding Building
- Polished Concrete Floors
- Ceiling Heights of 12' to 14'
- Fully Distributed HVAC Throughout
- Exposed Ceilings
- Skylights
- Roll Up Door
- Kitchen
- Private Parking
- 800 Amps of Power



No warranty or representation is made to the accuracy of the foregoing information. Terms of sale or lease are subject to change or withdrawal without notice.

PREMISES

± 5,000 SF

RENT

\$2.95/SF, IG

TERM

Sublease Through
August 31, 2027

OCCUPANCY

Immediate

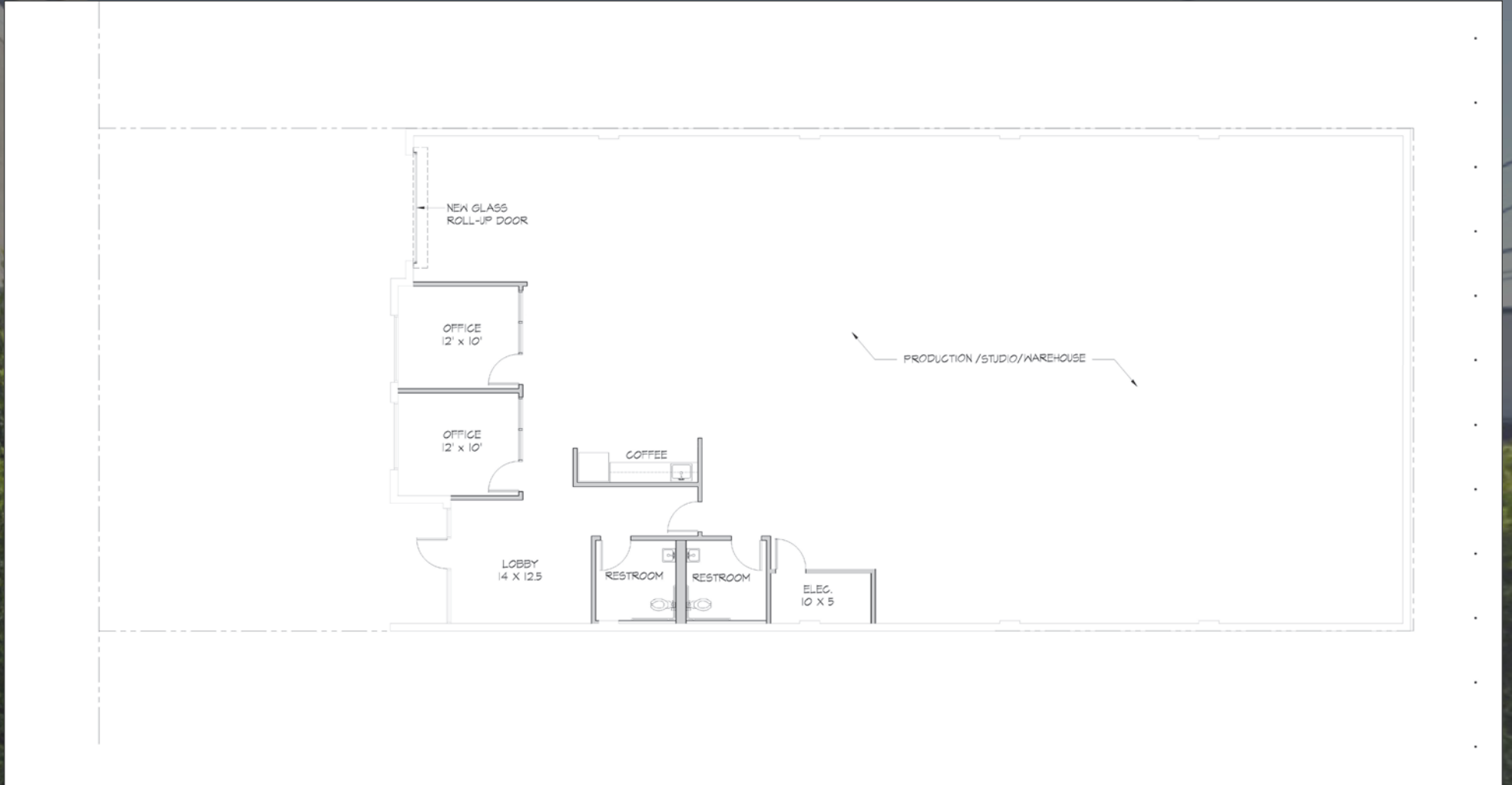
PARKING

Gated, Secure Lot
(5 Stalls)

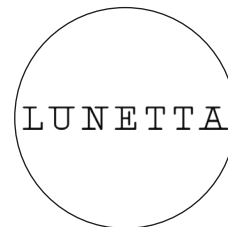




FLOOR PLAN



AREA AMENITIES



NOTABLE TENANTS IN THE AREA



WEST OLYMPIC CORRIDOR

Bad Robot
Indian Paintbrush
Final Cut
JBC Music
Arsenal FX Color
Digital Nation Entertainment
Cutters
Parks Mac Donald
Planet Blue HQ
Radical Media
Threshold Entertainment

BROADWAY PLACE

General Editorial
TigerConnect
Cut + Run
Cosmo Street Editorial
Apache

COLORADO CENTER

HULU
HBO
Bird
ShoeDazzle

WATER GARDEN

Amazon Studios
CBS
AMC Networks
Oracle

BERKELEY SM EAST

Blackbear Pictures
Blue Bonsai
Jenni Kayne
Soundbox
Apogee Electronics
Cartel
Yoga Glo

PENN FACTORY/PENN STATION

GoodRX
Kite Pharma
Redbull North America HQ
Tala
Center for Media & Design

COLORADO CORRIDOR

Viacom
Lionsgate
Interscope Records
Illumination
Gameshow Network
Universal Music Group
Starz Entertainment
Simple Practice
Goop
The Honest Company
FIGS
Reddit

2222 COTNER AVENUE

CONTACTS

GEORGE WILSON

310.899.2738
gwilson@leewestla.com
AGT DRE 02090678

BRAD MCCOY

310.899.2730
bmccoy@leewestla.com
BKR DRE 01938098

Lee & Associates Los Angeles West, Inc.
1508 17th Street, Santa Monica, CA 90404
www.leewestla.com | DRE 01222000



A DIVISION OF



LEE &
ASSOCIATES