

**OCCUPANCY & EXIT PLAN**

DATE	REMARKS
08/17/2022	USE PROPOSED SET FOR REVIEW
08/19/2022	100% PERMIT SET

PA / PM:	S. VACCARI
DRAWN BY:	J.B.
JOB NO.:	HOU22-6035-00

**RESTROOM SUMMARY**

**FIXTURES REQUIRED (BASED ON TPC TABLE 403.1):**

			UNISEX	UNISEX	UNISEX	UNISEX	UNISEX	UNISEX
			URINALS	LAVATORIES	DRINKING FOUNTAINS	SERVICE SINKS		
MERCANTILE	2,020 S.F. + 60 = 34 + 2 = 17	1	1	2	1			
OFFICE	1,276 S.F. + 100 = 13 + 2 = 6.5	1	1	1				
<b>TOTAL</b>	<b>3,296 S.F.</b>	<b>23.5</b>	<b>2</b>	<b>2</b>	<b>2</b>	<b>1</b>		

\* TPC 403.2, EXCEPTION 3: PERMITS A SHARED FACILITY FOR MERCANTILE OCCUPANT LOADS OF 100 OR FEWER.

**FIXTURES PROVIDED:**

WATER CLOSETS: 2  
LAVATORIES: 2  
DRINKING FOUNTAIN: 2  
SERVICE SINK: 1

**EXITING ANALYSIS**

NUMBER	ROOM NAME	OCC. GROUP	OCC. LOAD FACTOR	SQUARE FOOTAGE	OCC. LOAD	REQUIRED EXIT WIDTH	EXIT WIDTH PROVIDED
100	RETAIL	M	60	2,020	34	7"	108"
101	CARTS	B	100	540	6	1"	48"
102	CASH-OUT	B	100	120	1	1"	36"
103	SERVER	B	100	82	1	1"	36"
104	MULTI-PURPOSE	B	100	88	1	1"	36"
105	PANTRY	B	100	163	2	1"	48"
106	JANITOR'S CLOSET	B	100	12	1	1"	24"
107	(E) UNISEX ADA RESTROOM	ACC	-	50	-	-	36"
108	VESTIBULE	B	100	68	1	1"	36"
109	UNISEX ADA RESTROOM	ACC	-	57	-	-	36"
<b>TOTAL OCCUPANTS</b>				<b>= 47</b>			

47 OCCUPANTS X 2" = 94" REQUIRED  
120" PROVIDED

**TRAVEL DISTANCE TO EXITS**

MAXIMUM TRAVEL DISTANCE TO EXITS (1017.2 SPRINKLERED BUILDING):  
M/ MERCANTILE (RETAIL)..... 250 FEET MAX.  
B/BUSINESS (OFFICE)..... 300 FEET MAX.

**LEGEND**

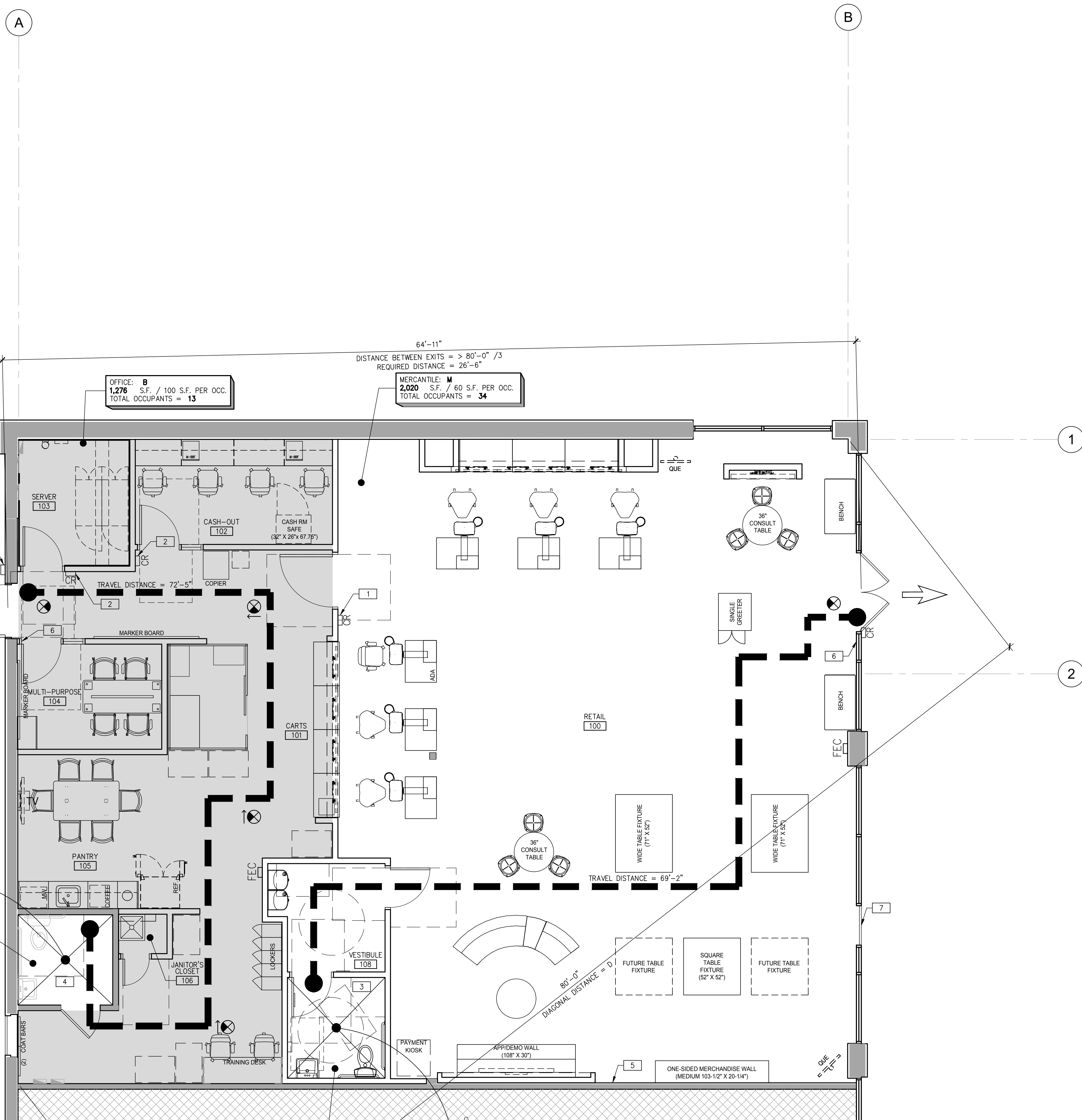
- INDICATES AREA NOT IN CONTRACT (N.I.C.)
  - INDICATES MERCANTILE AREA.
  - INDICATES BUSINESS AREA.
  - INDICATES EXIT
  - UNOBSTRUCTED PATH OF TRAVEL
  - NEW CEILING-MOUNTED EXIT SIGN W/ BATTERY BACKUP, SHADED QUADRANT INDICATES FACE OF LETTERING, SIGN TO INCLUDE DIRECTIONAL ARROW AS INDICATED - SEE ELEC. DWS.
  - NEW SEMI-RECESSED FIRE EXTINGUISHER CABINET AND FIRE EXTINGUISHER BY POTTER-ROEMER.
- NOTE: EXIT SIGNS SHALL BE SELF-LUMINOUS TYPE OR ELECTRICALLY ILLUMINATED & ENERGIZED FROM SEPARATE CIRCUITS, ONE OF WHICH SHALL BE FROM STORAGE BATTERIES OR AN ON-SITE GENERATOR.
- NOTE: ADDITIONAL DIRECTIONAL EXIT SIGNS MAY BE REQUIRED PRIOR TO FINAL INSPECTION AND SUBJECT TO BUILDING INSPECTOR.

**GENERAL PROJECT NOTES**

- SEE SHEETS A001 & A002 FOR GENERAL PROJECT NOTES
- POSTED SIGNS IN AN ASSEMBLY OCCUPANCY SHALL BE OF AN APPROVED LEGIBLE PERMANENT DESIGN AND SHALL BE MAINTAINED BY THE OWNER OR AUTHORIZED AGENT.
  - FINAL INSPECTION BY FIRE DEPARTMENT IS REQUIRED - SCHEDULE 72 HOURS IN ADVANCE.
  - FIRE PREVENTION WATER SERVICE SHALL BE IN SERVICE PRIOR TO DELIVERY OF COMBUSTIBLE BUILDING MATERIALS TO THE SITE.
  - FIRE SPRINKLER SYSTEM(S) SHALL MEET STATE & LOCAL FIRE CODES AND BE PROVIDED TO PROTECT ENTIRE BUILDING INCLUDING PROJECTIONS OVER 4'-0" AND SPRAY BOOTH.
  - FIRE SPRINKLER SYSTEM(S) AND ALL CONTROL VALVES, INCLUDING EXTERIOR SHALL BE SUPERVISED BY A U.L. LISTED CENTRAL ALARM STATION OR PER STATE & LOCAL FIRE CODES.
  - ALL VALVES CONTROLLING THE WATER SUPPLY FOR AUTOMATIC SPRINKLER SYSTEMS AND WATER-FLOW SWITCHES ON ALL SPRINKLER SYSTEMS SHALL BE ELECTRICALLY MONITORED WHERE THE NUMBER OF SPRINKLERS IS (100) OR MORE.
  - ELECTRICAL SUBCONTRACTORS TO INSTALL WIRING FOR FIRE SPRINKLER, ALARM BELL AND TELEPHONE WARNING AS REQUIRED BY FIRE DEPARTMENT.
  - INSTALLATION OF FIRE ALARM SYSTEMS SHALL BE IN ACCORDANCE WITH STATE & LOCAL FIRE CODES.
  - COMPLETE PLANS AND SPECIFICATIONS FOR ALL FIXED FIRE PROTECTION EQUIPMENT INCLUDING AUTOMATIC SPRINKLERS AND OTHER FIRE-PROTECTION SYSTEMS, SHALL BE SUBMITTED BY INSTALLING CONTRACTOR. SUCH PLANS SHALL BE APPROVED BY LOCAL FIRE AUTHORITY PRIOR TO INSTALLATION.
  - LOCATIONS AND CLASSIFICATIONS OF FIRE EXTINGUISHERS SHALL BE IN ACCORDANCE WITH STATE & LOCAL FIRE CODES AND PLACE IS SUBJECT TO THE APPROVAL OF THE FIRE INSPECTOR. VERIFY QUANTITY & EXACT LOCATION FROM FIRE DEPARTMENT PRIOR TO ORDERING.
  - AT LEAST ONE (1) FIRE EXTINGUISHER WITH A MINIMUM RATING OF: 2-A-10B-C (FOR OFFICE), OR 10-A-80B-C (FOR WAREHOUSE), SHALL BE PROVIDED WITHIN 75'-0" MAXIMUM TRAVEL DISTANCE FOR EACH 3,000 SQUARE FEET OR PORTION THEREOF ON EACH FLOOR.
  - STORAGE, DISPENSING OR USE OF ANY FLAMMABLE AND COMBUSTIBLE LIQUIDS, FLAMMABLE AND COMPRESSED GASES, AND OTHER HAZARDOUS MATERIALS SHALL COMPLY WITH STATE & LOCAL FIRE CODES. THE STORAGE AND USE OF HAZARDOUS MATERIALS SHALL BE APPROVED BY THE FIRE AUTHORITY PRIOR TO ANY MATERIALS BEING STORED OR USED ON SITE. A SEPARATE PLAN SUBMITTAL IS REQUIRED PRIOR TO THE STORAGE AND USE OF HAZARDOUS MATERIALS.
  - BUILDING(S) NOT APPROVED FOR HIGH-PILED STOCK (MATERIALS IN CLOSELY PACKED PILES OR ON PALLETS, OR IN RACKS WHERE THE TOP OF STORAGE EXCEEDS 12'-0" IN HEIGHT, AND 6'-0" FOR GROUP "A" PLASTICS AND CERTAIN OTHER HIGH-HAZARD COMMODITIES), HIGH-PILED STOCK SHALL BE APPROVED BY THE FIRE AUTHORITY PRIOR TO MATERIALS BEING STORED ON SITE. A SEPARATE PLAN SUBMITTAL IS REQUIRED FOR HIGH-PILED STORAGE IN ACCORDANCE WITH STATE & LOCAL FIRE CODES.
  - A LETTER OF INTENDED USE MAY BE REQUIRED BY THE FIRE INSPECTOR.
  - ALL REQUIRED FIRE DOORS SHALL BEAR A LABEL FROM A RECOGNIZED AGENCY SHOWING THE SPECIFIC RATINGS.
  - EXIT SIGNS AND ILLUMINATION SHALL CONFORM TO ALL APPLICABLE BUILDING AND FIRE CODES.
  - EXIT DOORS SHALL BE OPERABLE FROM THE INSIDE WITHOUT THE USE OF A KEY OR ANY SPECIAL KNOWLEDGE OR EFFORT.
  - PROVIDE OR MODIFY AS NEEDED SPRINKLER ALARM AND SMOKE DETECTION SYSTEM PER APPLICABLE CODES INCLUDING IF NECESSARY FOR HORNS, STROBE LIGHTS, CONTROL PANEL CONNECTIONS, SMOKE DETECTORS, AUDIO VISUAL ALARMS. SUBMIT SHOP DRAWINGS TO THE FIRE MARSHAL FOR APPROVAL.
  - REFER TO ENGINEER'S DRAWINGS FOR FIRE ALARM AND FIRE SPRINKLER GUIDANCE.
  - SIGN VENDOR TO PROVIDE AND INSTALL WALL-MOUNTED TACTILE "EXIT" SIGN AT LOCATIONS INDICATED. SEE DETAILS 25 ON SHEET A003.

**OCCUPANCY & EXIT KEYNOTES**

- FAIL SAFE CARD READER.
- FAIL SECURE CARD READER.
- NEW FULLY ACCESSIBLE RESTROOM FACILITY.
- EXISTING FULLY ACCESSIBLE RESTROOM FACILITY.
- EXISTING TENANT SEPARATION WALL TO REMAIN.
- WALL-MOUNTED TACTILE "EXIT" SIGN LOCATIONS INDICATE. SEE 25 A003.
- EXISTING DOOR TO BE LOCKED IN PLACE, TO RECEIVE SIGN "NOT AN EXIT".



OFFICE: B  
1,276 S.F. / 100 S.F. PER OCC.  
TOTAL OCCUPANTS = 13

MERCANTILE: M  
2,020 S.F. / 60 S.F. PER OCC.  
TOTAL OCCUPANTS = 34

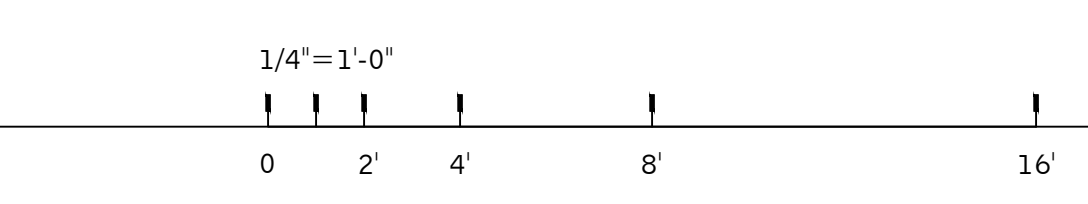
TRAVEL DISTANCE = 72'-5"

TRAVEL DISTANCE = 69'-2"

DIAGONAL DISTANCE = 80'-0"

ACCESSORY USE  
SEE EXITING ANALYSIS

ACCESSORY USE  
SEE EXITING ANALYSIS



**OCCUPANCY & EXIT PLAN**  
SCALE: 1/4"=1'-0"