

Office / Warehouse Space For Lease

3312 E 39th Street

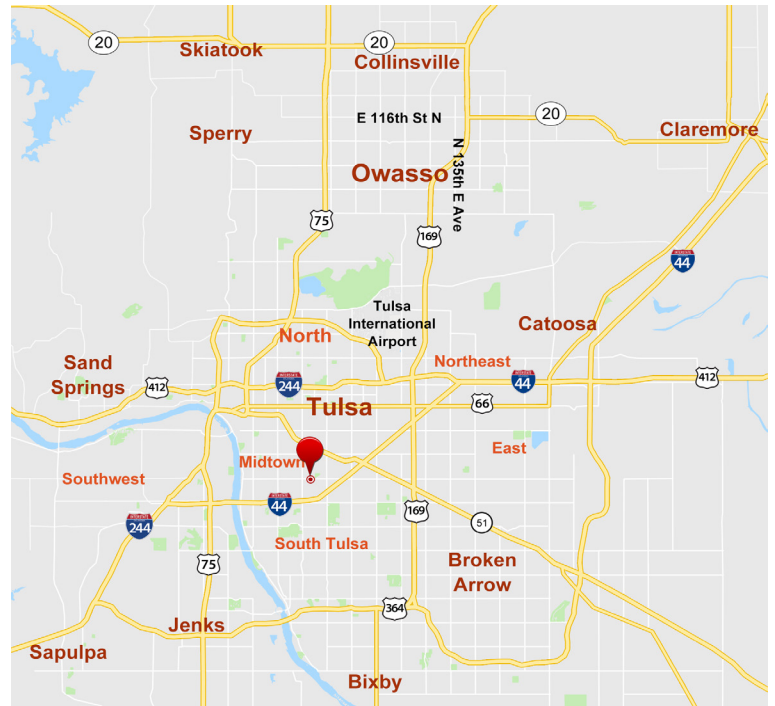
Tulsa, OK 74135

WIGGIN
PROPERTIES, LLC



Property Features:

- ±1,704 SF
- ±504 SF Office Space including Reception Area, (1) Private Office, Storage Room & Restroom with Shower
- 10' Clear Height
- 10'x10' Overhead Door
- Partially Climate Controlled
- Security System and Cameras in Place
- Pole Signage
- 39th Street Frontage
- Centrally Located with Close Proximity to I-44 and the Broken Arrow Expressway
- Zoned CS



Call Shawna Hale, CCIM at 918.282.8664 or John Watchous at 918.991.8519

shale@wiginprop.com | jwatchous@wiginprop.com | wiginprop.com

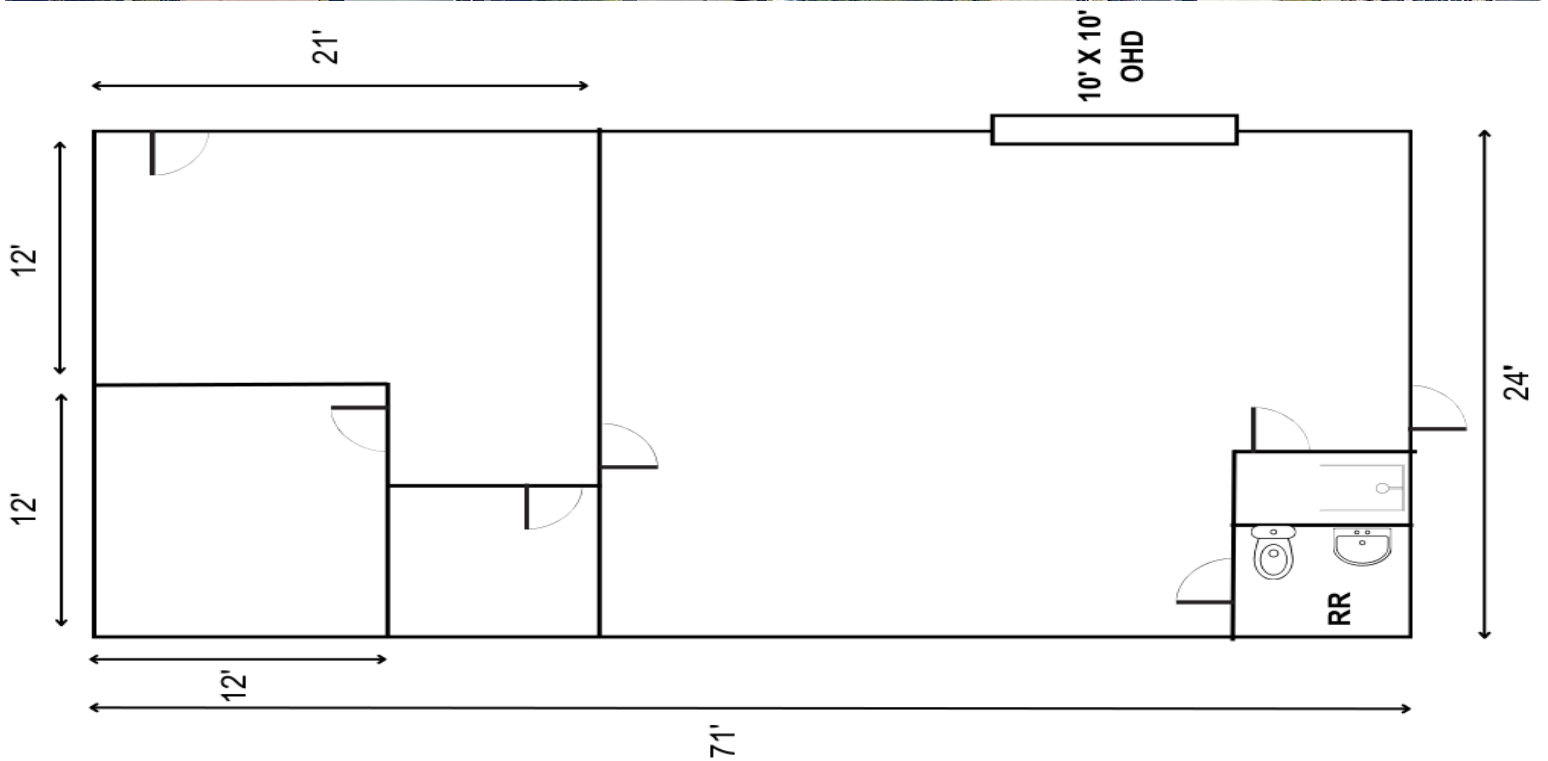
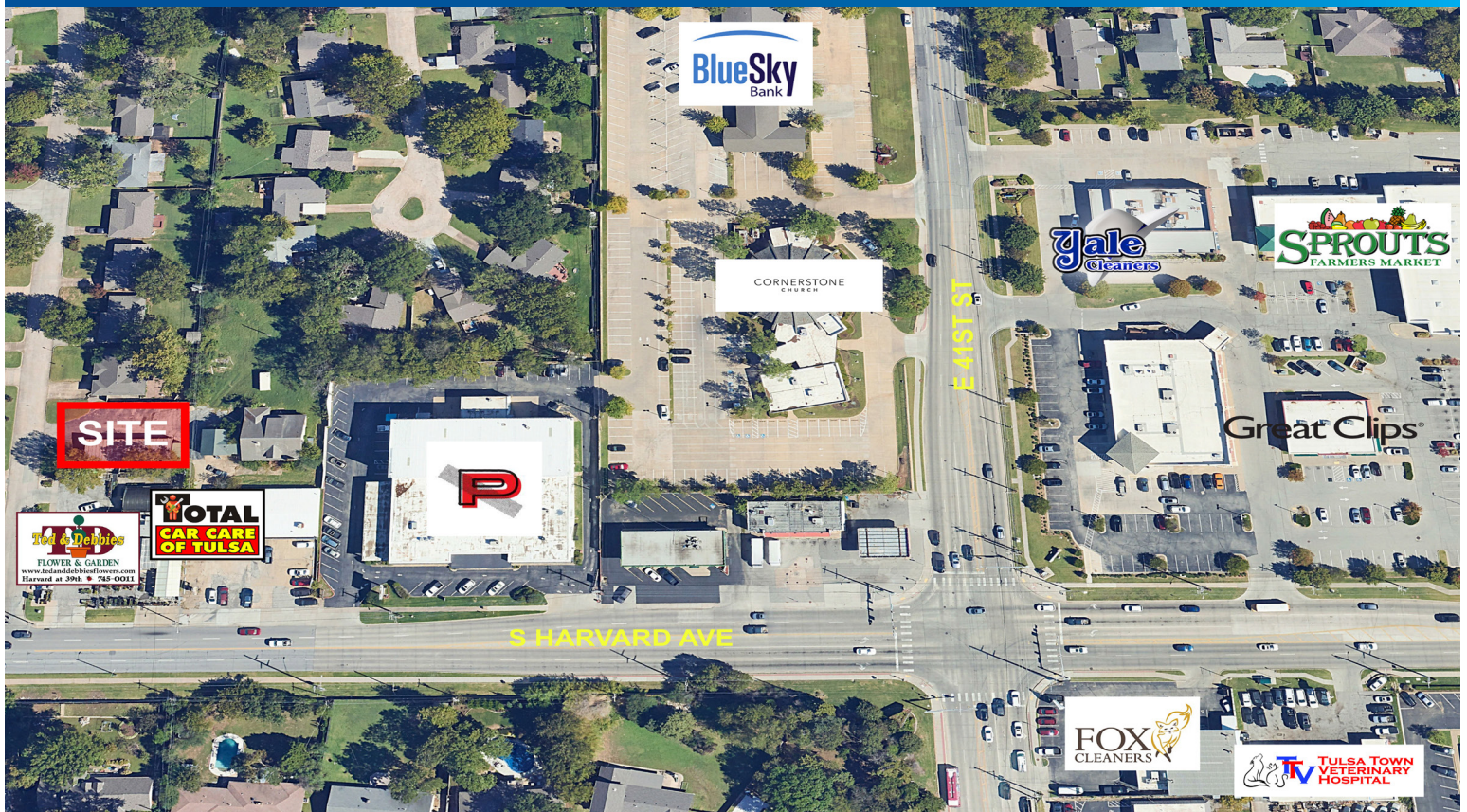
This material is provided for information purposes only. It is from sources believed to be reliable. However, Wiggin Properties makes no warranties or representations, expressed or implied, as to the accuracy or sufficiency of the information. It is presented subject to errors, omissions, changes or withdrawal without notice. Square footage is provided by the local County Assessor or the Owner. Photos and graphics with copyrights by Costar, Google, Wiggin Properties and independent contractors are used with permission.

Office / Warehouse Space For Lease

3312 E 39th Street

Tulsa, OK 74135

WIGGIN
PROPERTIES, LLC



Call Shawna Hale, CCIM at 918.282.8664 or John Watchous at 918.991.8519

shale@wiggprop.com | jwatchous@wiggprop.com | wiggprop.com

This material is provided for information purposes only. It is from sources believed to be reliable. However, Wiggin Properties makes no warranties or representations, expressed or implied, as to the accuracy or sufficiency of the information. It is presented subject to errors, omissions, changes or withdrawal without notice. Square footage is provided by the local County Assessor or the Owner. Photos and graphics with copyrights by Costar, Google, Wiggin Properties and independent contractors are used with permission.