

For Sale

2,035 SF | Standalone Corner Retail
Incredible Biltmore Village Opportunity



For Sale
2,035 SF
Retail Space



1 Swan St.

Asheville, North Carolina 28803

Property Overview

Exceptional opportunity to own a cornerstone of historic Biltmore Village at a significant discount. Located at the high-visibility corner of Swan & Brook Streets (14,700+ daily traffic), this former jewelry store offers unmatched potential.

While Hurricane Helene impacted the area, this building was swiftly remediated with full demo and professional drying. No major structural damage, just a clean slate ready for your vision and fresh buildout. With on-site parking and prime pedestrian and vehicular exposure, this is a trophy asset ready for rebirth. Don't miss your chance to bring this iconic property back to life.

Offering Summary

Sale Price:	\$575,000
Building Size:	Approximately 2,035 SF
Zoning:	CBI
Lot Size:	0.11 Acres

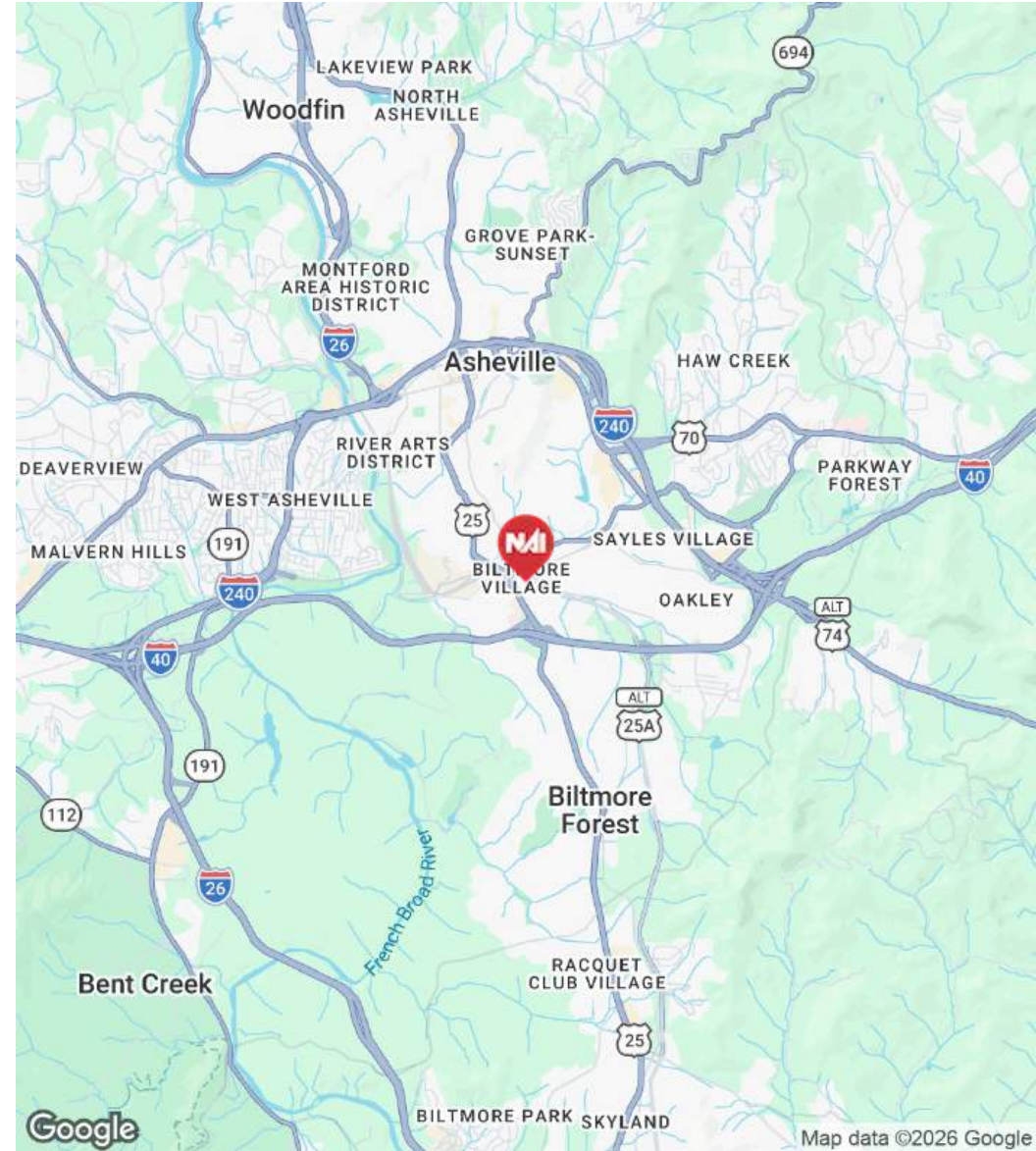
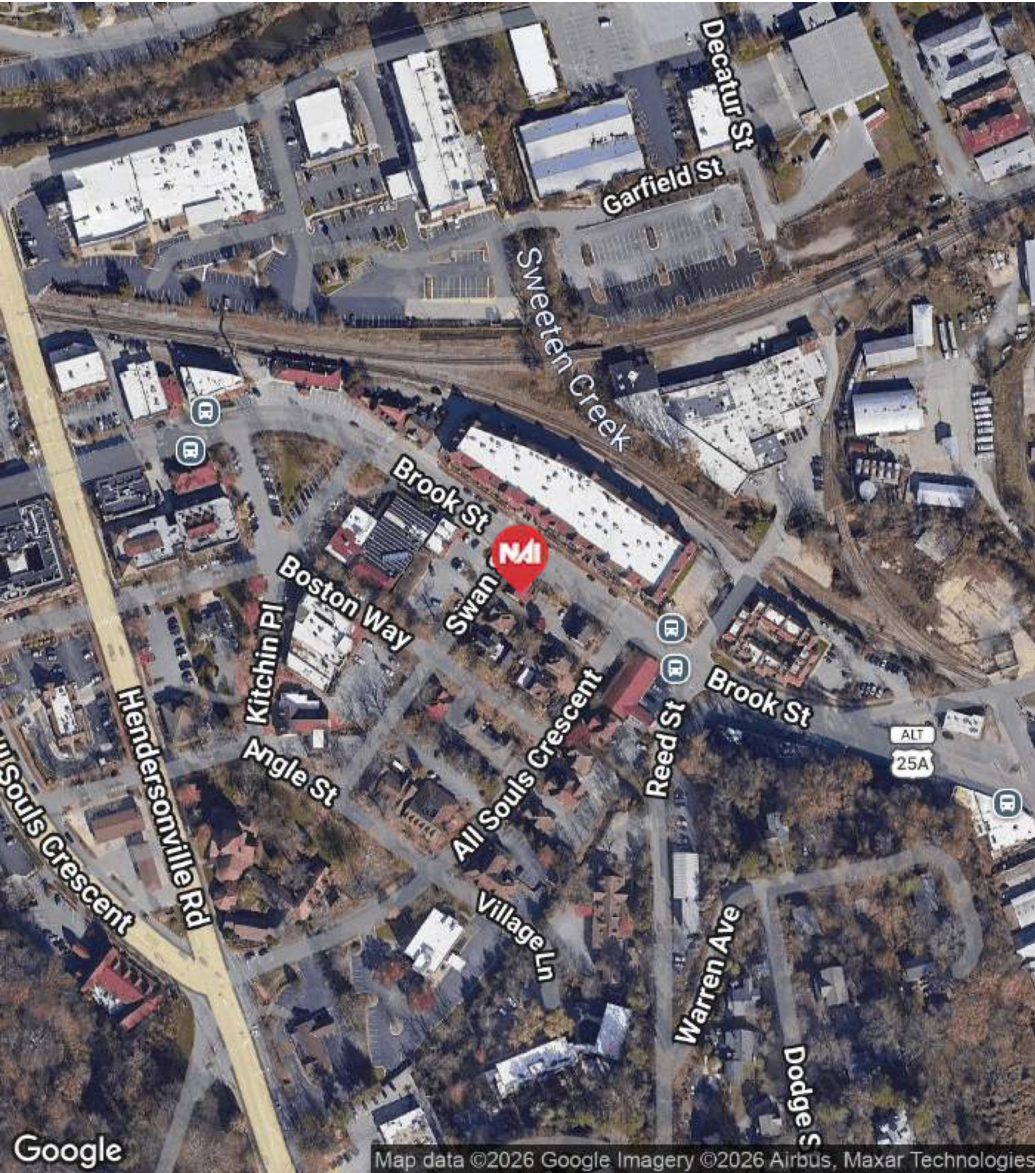
For More Information

Jim Davis, SIOR

C: 330 718 3311

jdavis@naibevely-hanks.com | NC #292479

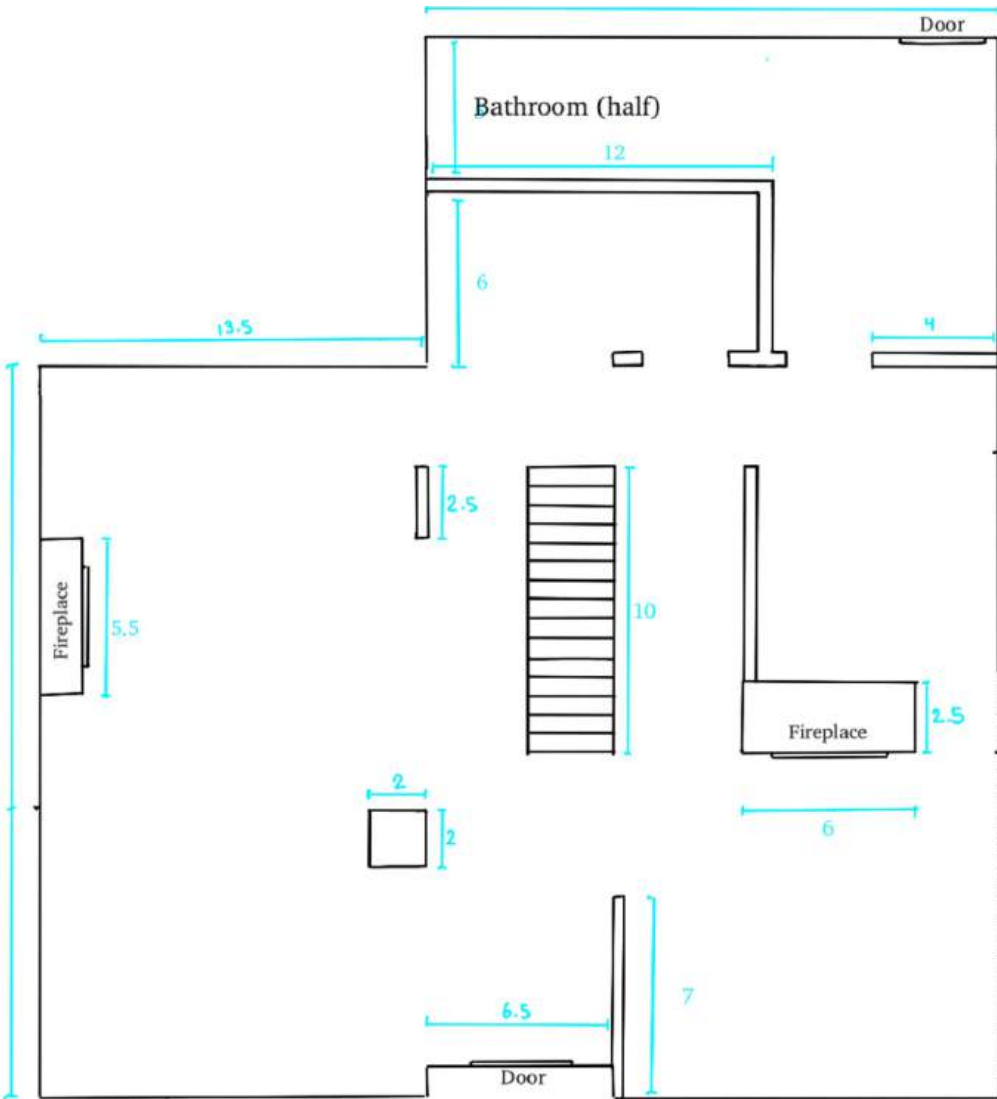
For Sale
2,035 SF
Prime Location



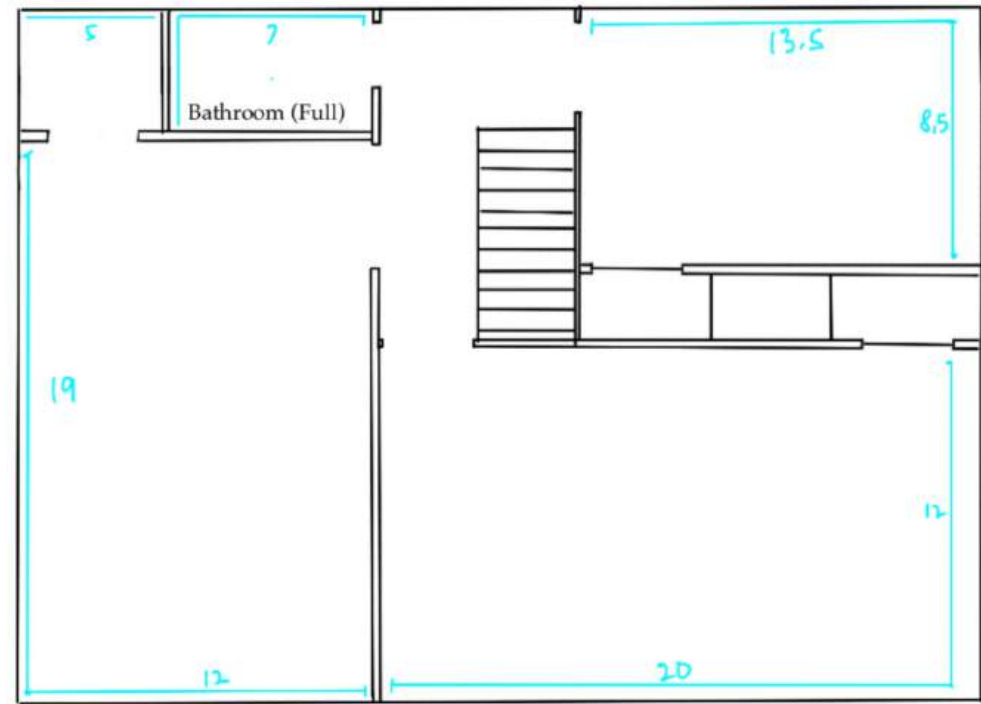
For Sale
2,035 SF
Exterior Photos







First Floor



Second Floor







Historic Background Of Biltmore Village

Biltmore Village was envisioned in the 1890s by George W. Vanderbilt as a charming “company town” to serve his grand estate. Designed to evoke an English village, it included its own post office, school, church, shops, hospital, and train station, built so estate workers could live, work, and shop within walking distance. Spearheaded by architect Richard Morris Hunt and Frederick Law Olmsted, followed by supervising architect Richard Sharp Smith, the village was among the nation’s earliest planned mixed-use communities. The Village remains a vibrant commercial district, celebrated for its English cottage architecture, tree-lined streets, and a rich mix of boutiques and eateries.



For Sale

Own A Piece of Asheville History Retail Space



History Of Swan Street Cottages In Biltmore Village

The cottages lining Swan Street are part of the nationally recognized Biltmore Village Cottage District, comprising around 14 historic buildings constructed circa 1900 by Richard Sharp Smith under Vanderbilt’s direction. These charming half-timbered, pebbledash-finished cottages, many with recessed porches, multiple gables, and steep roofs, were originally rental homes built for estate workers. They reflect a harmonious blend of Arts & Crafts, Tudor Revival, and English cottage styles, a testament to Smith’s architectural vision and an enduring part of Asheville’s historic fabric. Over a century later, these cottages remain a key feature of Biltmore Village’s architectural identity.

Recovery Progress In Biltmore Village

-Vibrant reopening: The Grand Bohemian Lodge, a prominent 104-room hotel in Biltmore Village, reopened May 8, 2025, following a full renovation of its lobby and first floor.

-Strong comeback: Approximately 75–80% of businesses plan to return, reflecting a community-wide effort to rebuild. (WLOS)

-Red Stag Grill returned with the Grand Bohemian reopening and was part of the lodge's redesign and relaunch.

-Corner Kitchen reopened in August 2025 after more than 10 months of rebuilding, becoming the first independent restaurant back in Biltmore Village.

-White Lotus Boutique reopened on November 2, 2025 after rebuilding from extensive flood and mud damage.

-Biltmore Village McDonald's completed its rebuild and reopened in late 2025.

-Village Artist Market opened in September 2025 at 32 All Souls Crescent, launching a new art-focused concept featuring work from 40+ artists.

-Many other recent openings such as Talbots, Chico's, Jos. A. Bank, and Williams-Sonoma.

-Tourism engine: The reopening of both the Biltmore Estate and the Village's hotels and shops is stimulating a steady inflow of visitors, essential to economic recovery.

-The City of Asheville launched the Biltmore Village Lighting Recovery Project.

-Asheville was awarded \$2.4 million in state Helene recovery funding for Biltmore Village infrastructure restoration. (WLOS)

- Visit www.historicbiltmorevillage.com for an updated list of reopened businesses!

Recovery In Progress

Be a part of the historical comeback!
Retail Space



Jim Davis, SIOR

NAI Beverly-Hanks | Commercial Broker

North Carolina Economic Development Association Member

Phone: 330-718-3311

Email: Jdavis@NAIBeverly-Hanks.com

For More Info
or a private tour...
Please Contact:

