

**FOR LEASE**  
INDUSTRIAL PROPERTY



# 275 CENTRE ST

HOLBROOK, MA 02343

*For More Information*

**BILL KINGDON, SIOR**

603.560.2710

[bill@ellisrealtyadvisors.com](mailto:bill@ellisrealtyadvisors.com)



# 275 CENTRE ST



## PROPERTY DESCRIPTION

5,048 SF flex/industrial condo available at 275 Centre Street in Holbrook. This unit is currently built out with 2000 SF of office with high end finishes and features 20' clear heights in the remaining warehouse. One loading dock and ample power make this unit ideal for contractors, distribution, or any warehousing use.

## PROPERTY HIGHLIGHTS

## OFFERING SUMMARY

Lease Rate:	\$14 SF/yr (NNN)
Number of Units:	1
Available SF:	5,048 SF
Building Size:	5,048 SF

DEMOGRAPHICS	0.3 MILES	0.5 MILES	1 MILE
Total Households	147	454	2,785
Total Population	298	1,043	7,719
Average HH Income	\$123,151	\$126,553	\$128,978

# 275 CENTRE ST



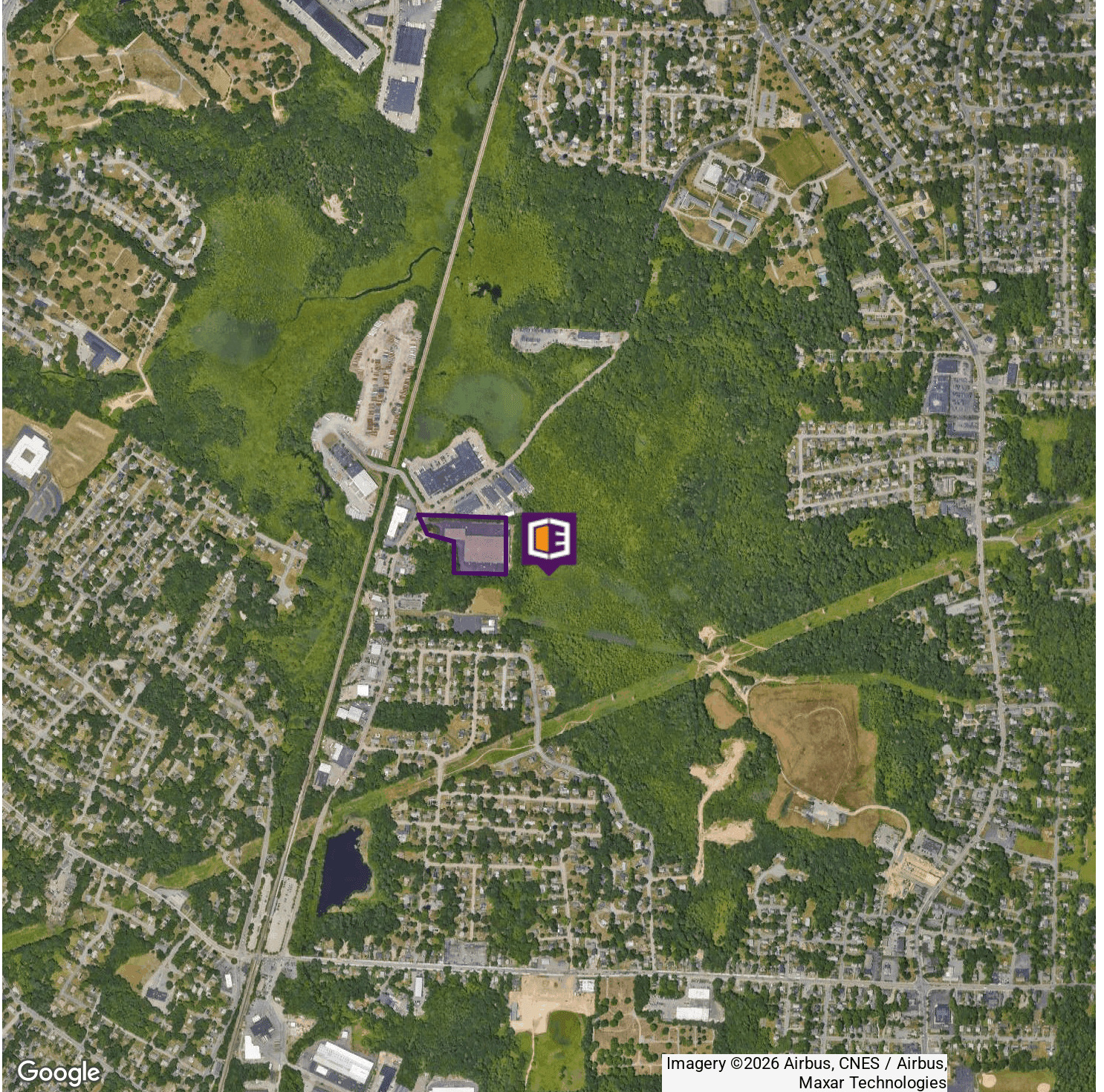
## LOCATION INFORMATION

Street Address	275 Centre St
City, State, Zip	Holbrook, MA 02343
County	Norfolk
Signal Intersection	Yes

## BUILDING INFORMATION

Tenancy	Multi
Ceiling Height	20 ft
Office Space	2,000 SF
Number of Floors	1
Year Built	1986
Year Last Renovated	2020
Warehouse %	90.0%
Free Standing	Yes
Mezzanine	No

# 275 CENTRE ST



Google

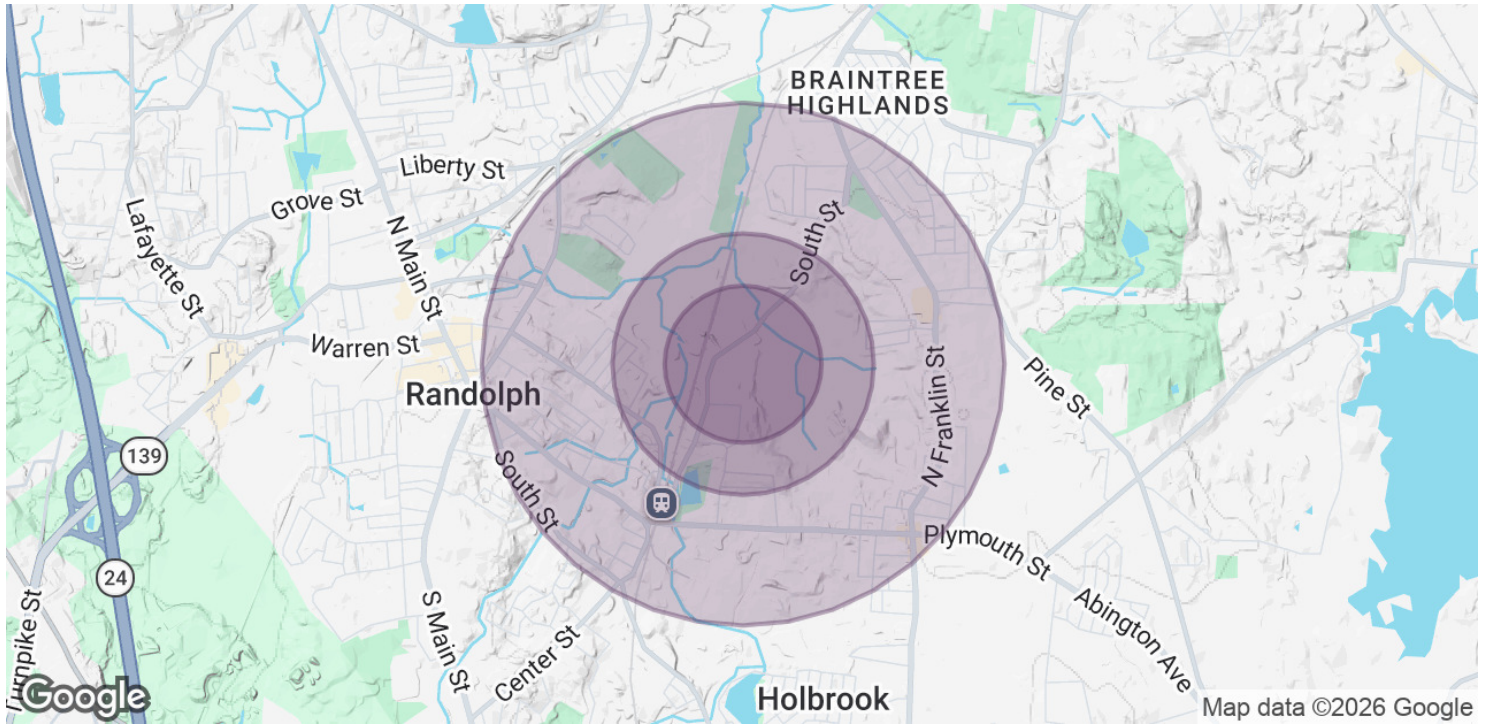
Imagery ©2026 Airbus, CNES / Airbus, Maxar Technologies



**BILL KINGDON, SIOR**

603.560.2710  
bill@ellisrealtyadvisors.com

# 275 CENTRE ST



POPULATION	0.3 MILES	0.5 MILES	1 MILE
Total Population	298	1,043	7,719
Average age	44.3	42.3	40.9
Average age (Male)	46.6	43.8	41.5
Average age (Female)	43.7	42.4	40.4

HOUSEHOLDS & INCOME	0.3 MILES	0.5 MILES	1 MILE
Total households	147	454	2,785
# of persons per HH	2.0	2.3	2.8
Average HH income	\$123,151	\$126,553	\$128,978
Average house value	\$437,440	\$465,145	\$484,065

\* Demographic data derived from 2020 ACS - US Census