

Revision Schedule		
No	Description	Date
B	ISSUED FOR PERMIT	2023.11.02
C	PERMIT REV	2022.03.04
1	IFC	2022.08.03

COPYRIGHT 2021. ALL RIGHTS RESERVED.
THIS DRAWING IS THE PROPERTY OF PROJECT PLUS, LLC AND IS TO ONLY BE USED FOR THE PROJECT AND SITE SPECIFICALLY IDENTIFIED HEREIN. DRAWINGS AND DOCUMENTATION MAY NOT BE REPRODUCED IN ANY FORM WITHOUT WRITTEN PERMISSION FROM PROJECT PLUS, LLC.

© 2021



LIFE SAFETY PLAN

A. EGRESS COMPONENT SYMBOL

EXIT EXIT

B. LIFE SAFETY LEGEND

* CPCE/ TRAVEL DISTANCE REMAINDER POINT

REC FIRE EXTINGUISHER CABINET (SMA-RECEIVED)

EXIT SIGN

TRAVEL DISTANCE

30 MINUTE CORRIDOR PARTITION

1 HOUR SMOKE BARRIER

1 HOUR RATED WALL

2 HOUR RATED WALL

3 HOUR RATED WALL

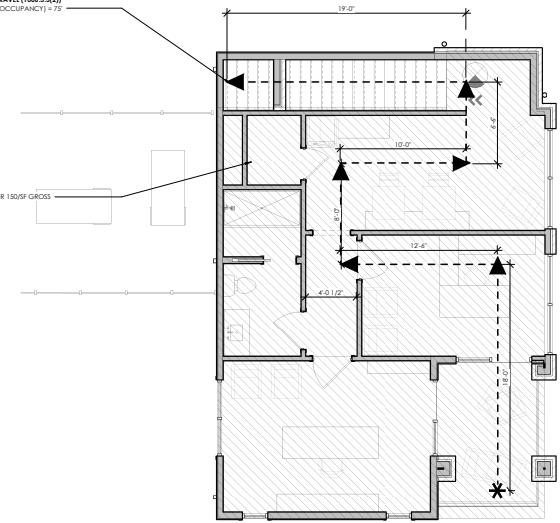
4 HOUR RATED WALL

C. NOTES

- REFER TO G-101 FOR BUILDING CODE INFORMATION
- EXIT WIDTHS SHOWN ARE 36" DOORS LESS 7" ALLOWANCE FOR DOOR & HARDWARE = 34" CLEAR.
- PROVIDE EXIT DOOR TACTILE SIGNAGE IN ACCORDANCE WITH NFPA 101.7.10.1.3 SIGNS ARE TO BE 4X4 READING TEXT AND INCLUDING BRAILLE TEXT. SIGNS TO BE IN ACCORDANCE WITH THE REQUIREMENT OF ICC/ANSI A117.1 SIGNS TO BE MOUNTED BETWEEN 48" AND 67" A.F.F. TO THE CENTER AND SHALL BE LOCATED TO THE LATCH SIDE OF SINGLE DOORS AND TO THE RIGHT OF DOUBLE DOORS. BEFORE INSTALLATION VERIFY THE SIGNAGE TYPE AND LOCATION WITH THE FIRE MARSHAL.
- PORTABLE FIRE EXTINGUISHERS TO BE A MINIMUM 2A:10BC AND LOCATED SUCH THAT THE MAXIMUM TRAVEL DISTANCE TO AN EXTINGUISHER DOES NOT EXCEED 75 FT PER IBC 903.3.2.
- FIRE EXTINGUISHER CABINET TO BE MOUNTED WITH EXTINGUISHER HANDLE MOUNTED LESS THAN 48" ABOVE FINISHED FLOOR TO MEET ADA REQUIREMENTS. PROVIDE IN ACCORDANCE W/ THESE PLANS & LOCAL FIRE MARSHAL DIRECTION.

MAXIMUM COMMON PATH OF EGRESS TRAVEL (1006.3.3(2))
SECOND STORY ABOVE GRADE PLANE (B OCCUPANCY) = 75'
PROVIDED: 74.42'

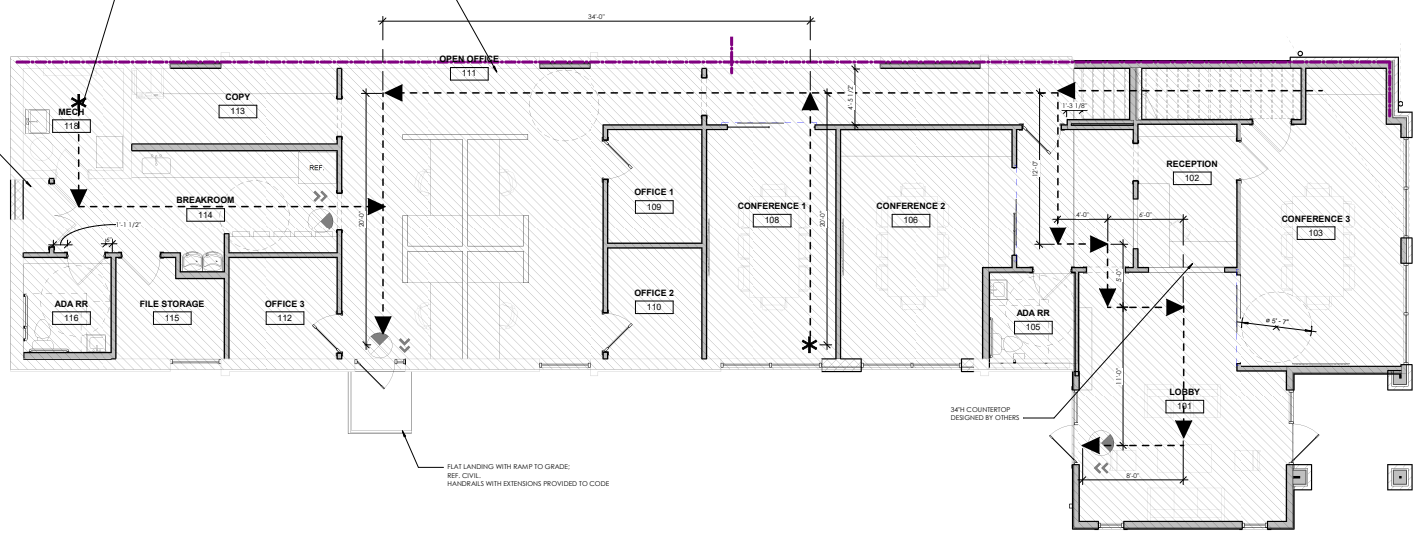
881 SF
BUSINESS OCCUPANCY 1 OCCUPANT PER 150SF GROSS
6 OCCUPANTS



② SECOND FLOOR LIFE SAFETY PLAN
3/4" = 1'-0"

2,941 SF
BUSINESS OCCUPANCY 1 OCCUPANT PER 150SF GROSS
20 OCCUPANTS
TOTAL 24 OCCUPANTS (INCLUDING LEVEL 2)

EXIT TRAVEL DISTANCE LESS THAN 75'



① FIRST FLOOR LIFE SAFETY PLAN
1/4" = 1'-0"

FLAT LANDING WITH RAMP TO GRADE:
REF. CIVIL
HANDRAILS WITH EXTENSIONS PROVIDED TO CODE

SFN COUNTERTOP
DESIGNED BY OTHERS