

# POINT WEST OFFICE SPACE

1515 River Park Drive, Sacramento, Ca

±2,164 — 7,228 RSF Available



## Property Highlights



Easy Access to Highway 80 and Highway 160



Excellent access to Arden Fair Mall



Attractive Landscaping



Expansive window line and deck surrounding vacant suite



Located in Point West submarket



\$1.85 PSF/Month FSG





# First Floor Availability

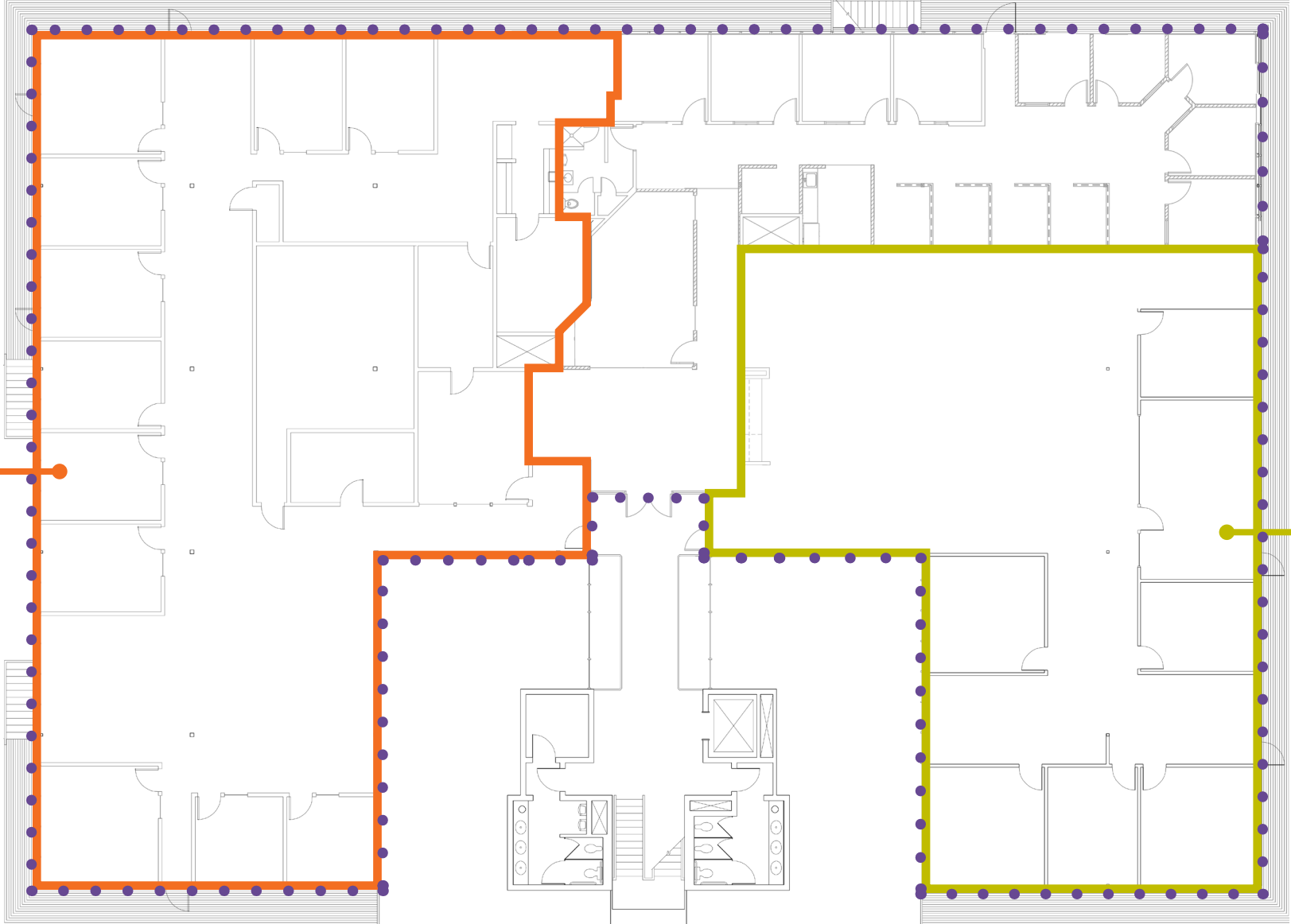
±2,164 — 3,289 Square Feet



# Second Floor Availability

±5,667 — 7,228 Square Feet

**Suite 210**  
±7,228 SF



**Suite 220**  
±5,667 SF





**MIDTOWN  
SACRAMENTO**



**LOCATION**



1515 RIVER PARK DRIVE

**16 MIN** SACRAMENTO INTERNATIONAL AIRPORT  
**10 MIN** SACRAMENTO CENTRAL BUSINESS DISTRICT

1. MARKET SQUARE	
CRUNCH FITNESS	MIKUNI'S
CALIFORNIA PIZZA KITCHEN	PARTY CITY
SUBWAY	BARNES & NOBLE
XFINITY	DOS COYOTES
TERIYAKI GRILL	PEET'S COFFEE
BEST BUY	FEDEX
CHEESECAKE FACTORY	AT&T STORE

2. ARDEN MALL	
MACY'S	MICHAEL KORS
JCPENNEY	ONIT COFFEE
APPLE	85C BAKERY CAFÉ
COACH	BJ'S RESTAURANT
MAC	LULUEMON
SEASON 52	GEN KOREAN BBQ
STARBUCKS	JAMBA JUICE

3. HOWEBOUTARDEN	
CENTURY THEATRES	NORDSTROM RACK
HOMEGOODS	THE CONTAINER STORE
STARBUCKS	SMASHBURGER
PINKBERRY	JAMBA JUICE
BONCHON	PETE'S RESTAURANT
AHI POKI	KURA REVOLVING SUSHI BAR
MOD PIZZA	CHEVRON

4. CAL EXPO	
80+ EVENTS PER YEAR	
4M+ ANNUAL VISITORS	

5. POINT WEST PLAZA	
KOHL'S	OLD NAVY
HOBBY LOBBY	FIVE BELOW
PETCO	DAVID'S BRIDAL
STARBUCKS	HOBBY LOBBY
OLIVE GARDEN	BLACK BEAR







# CONTACT US

**Sean Mullen** | Managing Director

+1.916.288.4811

sean.mullen@cushwake.com

CA LIC #01845406

**Spencer Nielsen** | Director

+1.916.288.4531

CA LIC #01964163

spencer.nielsen@cushwake.com

400 Capitol Mall, Suite 1800

Sacramento, CA 95814

+1.916.288.4800

cushmanwakefield.com

©2024 Cushman & Wakefield. All Rights Reserved. The Information Contained In This Communication Is Strictly Confidential. This Information Has Been Obtained From Sources Believed To Be Reliable But Has Not Been Verified. No Warranty Or Representation, Express Or Implied, Is Made As To The Condition Of The Property (Or Properties) Referenced Herein Or As To The Accuracy Or Completeness Of The Information Contained Herein, And Same Is Submitted Subject To Errors, Omissions, Change Of Price, Rental Or Other Conditions, Withdrawal Without Notice, And To Any Special Listing Conditions Imposed By The Property Owner(S). Any Projections, Opinions Or Estimates Are Subject To Uncertainty And Do Not Signify Current Or Future Property Performance.

