


Jones Lang LaSalle Brokerage, Inc. a licensed real estate broker.



# For sale

## 105,000 SF Fully-leased manufacturing facility

101 Juneau Street & 301 2nd Street  
Elroy, WI 53929

 **JLL** SEE A BRIGHTER WAY

# 105,000 SF Fully-leased manufacturing facility



101 Juneau Street & 301 2nd Street, Elroy, WI 53929



This well-maintained stand-alone structure is located in the heart of Elroy, Wisconsin and is the manufacturing home of Wisconic LLC, which specializes in plastic injection molding.

[www.wisconic.com](http://www.wisconic.com)



**\$3,250,000** Sale price **\$30.95** Price PSF

**\$25,544**

Tenant rent / month

**\$306,528**

Tenant rent annually

**\$2.91**

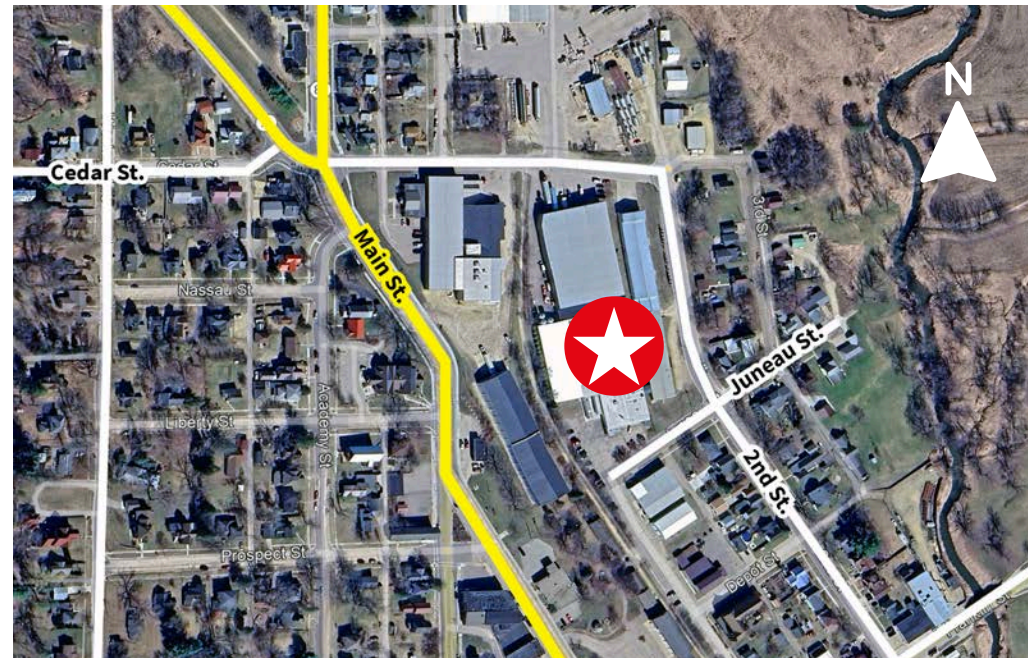
Tenant rent PSF NNN

Asking CAP rate	9.4%
Increases	3%
Existing lease expiration	2033
2024 taxes	\$33,652.98

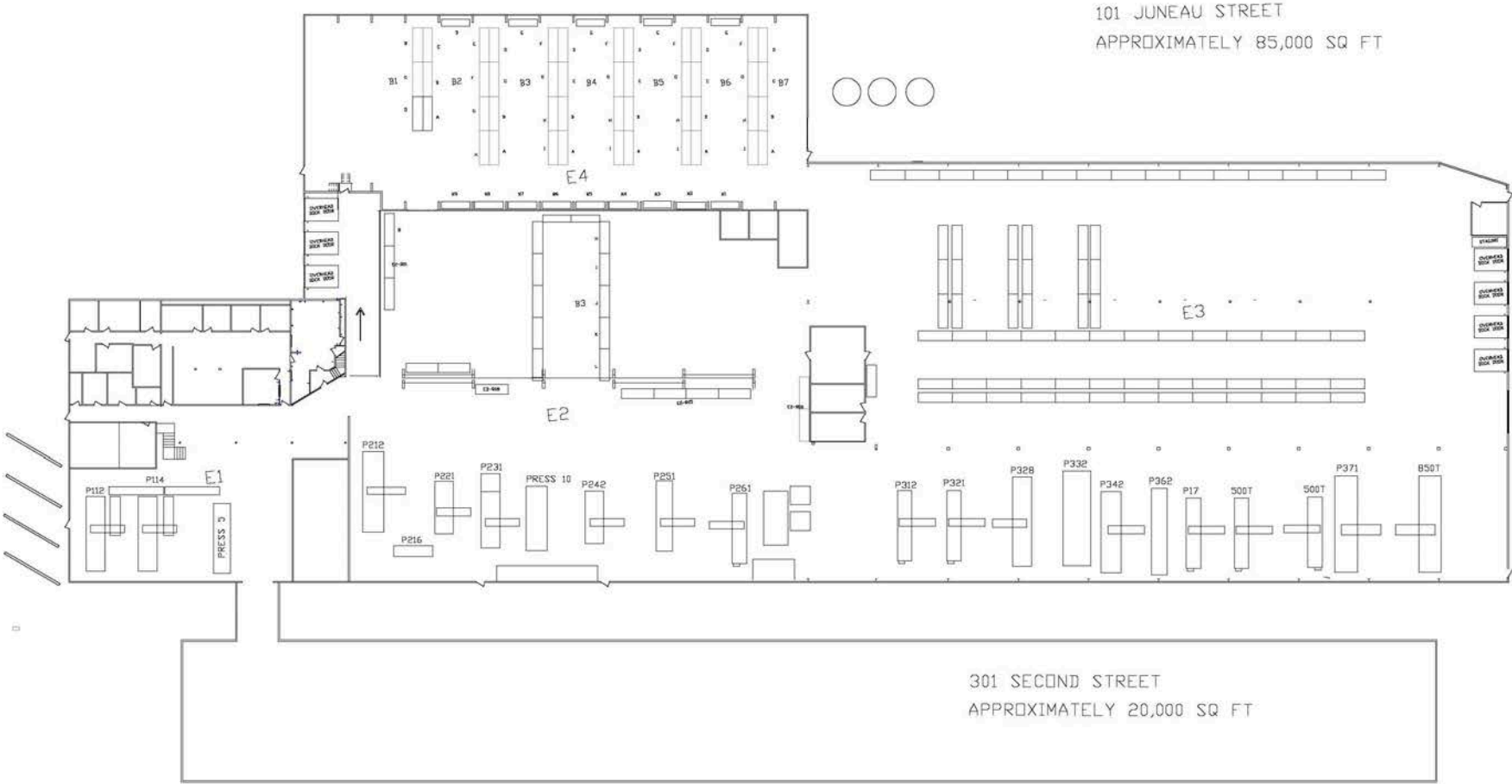
Contact Broker for additional details.

# 101 Juneau St. & 301 2nd St., Elroy, WI 53929

<b>Total size</b>	105,000 SF
<b>Office size</b>	±10,000 SF
<b>Site size / zoning</b>	4.32 AC / G-3 Industrial
<b>Construction</b>	Metal
<b>Built / expanded</b>	1980 / 1999
<b>Power</b>	2,500 AMP 480 3-phase (well-distributed)
<b>Sprinkler</b>	Wet & dry in main plant
<b>Ceiling height</b>	19' - 26' main plant 14' in 20,000 SF storage facility
<b>Utilities / lighting</b>	Municipal / LED
<b>Loading</b>	7 dock doors, 4 grade level doors
<b>Cranes</b>	One 10-ton bridge with 19' under hook



# Plant Map



101 Juneau Street & 301 2nd Street, Elroy, WI 53929

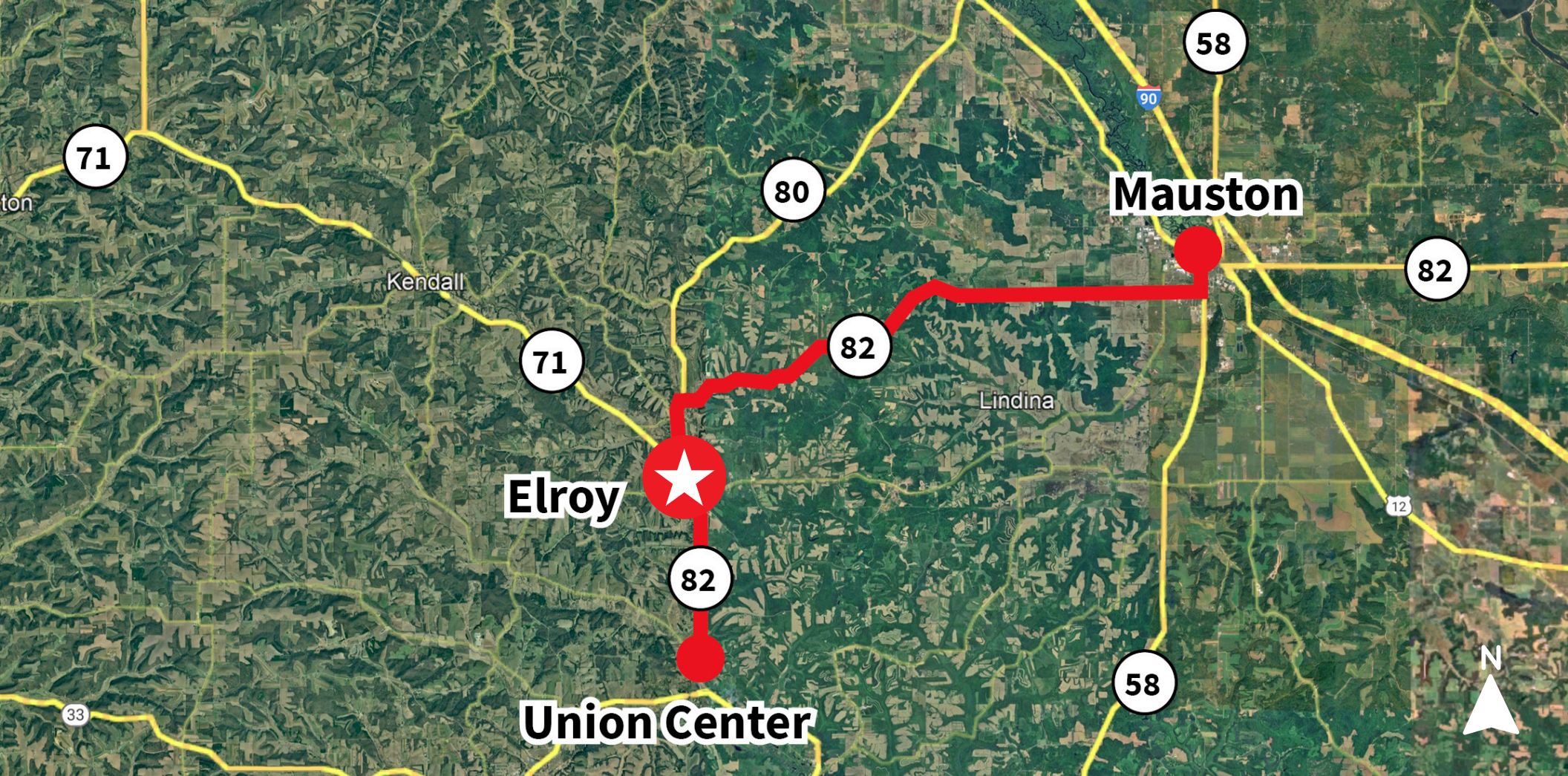
# Photos

101 Juneau Street & 301 2nd Street, Elroy, WI 53929



101 Juneau Street & 301 2nd Street  
Elroy, WI 53929

Distance to:			
Union Center	Mauston	La Crosse	Madison
4.6 miles	12 miles	63.7 miles	82 miles



**About JLL**

For over 200 years, JLL (NYSE: JLL), a leading global commercial real estate and investment management company, has helped clients buy, build, occupy, manage and invest in a variety of commercial, industrial, hotel, residential and retail properties. A Fortune 500® company with annual revenue of \$20.9 billion and operations in over 80 countries around the world, our more than 103,000 employees bring the power of a global platform combined with local expertise. Driven by our purpose to shape the future of real estate for a better world, we help our clients, people and communities SEE A BRIGHTER WAY<sup>SM</sup>. JLL is the brand name, and a registered trademark, of Jones Lang LaSalle Incorporated. For further information, visit [jll.com](http://jll.com).

WISCONSIN REALTORS® ASSOCIATION  
4801 Forest Run Road, Madison, WI 53704

JLL  
Effective July 1, 2016

**DISCLOSURE TO NON-RESIDENTIAL CUSTOMERS**

1 Prior to negotiating on your behalf the brokerage firm, or an agent associated with the firm, must provide you the  
2 following disclosure statement:  
3 **DISCLOSURE TO CUSTOMERS** You are a customer of the brokerage firm (hereinafter Firm). The Firm is either an agent  
4 of another party in the transaction or a subagent of another firm that is the agent of another party in the transaction. A  
5 broker or a salesperson acting on behalf of the Firm may provide brokerage services to you. Whenever the Firm is  
6 providing brokerage services to you, the Firm and its brokers and salespersons (hereinafter Agents) owe you, the  
7 customer, the following duties:  
8 (a) The duty to provide brokerage services to you fairly and honestly.  
9 (b) The duty to exercise reasonable skill and care in providing brokerage services to you.  
10 (c) The duty to provide you with accurate information about market conditions within a reasonable time if you request  
11 it, unless disclosure of the information is prohibited by law.  
12 (d) The duty to disclose to you in writing certain Material Adverse Facts about a property, unless disclosure of the  
13 information is prohibited by law (see lines 42-51).  
14 (e) The duty to protect your confidentiality. Unless the law requires it, the Firm and its Agents will not disclose your  
15 confidential information or the confidential information of other parties (see lines 23-41).  
16 (f) The duty to safeguard trust funds and other property held by the Firm or its Agents.  
17 (g) The duty, when negotiating, to present contract proposals in an objective and unbiased manner and disclose the  
18 advantages and disadvantages of the proposals.  
19 Please review this information carefully. An Agent of the Firm can answer your questions about brokerage services,  
20 but if you need legal advice, tax advice, or a professional home inspection, contact an attorney, tax advisor, or home  
21 inspector. This disclosure is required by section 452.135 of the Wisconsin statutes and is for information only. It is a  
22 plain-language summary of the duties owed to a customer under section 452.133(1) of the Wisconsin statutes.  
23 **CONFIDENTIALITY NOTICE TO CUSTOMERS** The Firm and its Agents will keep confidential any information given to the  
24 Firm or its Agents in confidence, or any information obtained by the Firm and its Agents that a reasonable person  
25 would want to be kept confidential, unless the information must be disclosed by law or you authorize the Firm to  
26 disclose particular information. The Firm and its Agents shall continue to keep the information confidential after the  
27 Firm is no longer providing brokerage services to you.  
28 The following information is required to be disclosed by law:  
29 1. Material Adverse Facts, as defined in Wis. Stat. § 452.01(5g) (see lines 42-51).  
30 2. Any facts known by the Firm or its Agents that contradict any information included in a written inspection  
31 report on the property or real estate that is the subject of the transaction.  
32 To ensure that the Firm and its Agents are aware of what specific information you consider confidential, you may  
33 list that information below (see lines 35-41) or provide that information to the Firm or its Agents by other means. At a  
34 later time, you may also provide the Firm or its Agents with other Information you consider to be confidential.  
35 **CONFIDENTIAL INFORMATION:** \_\_\_\_\_  
36 \_\_\_\_\_  
37 \_\_\_\_\_  
38 **NON-CONFIDENTIAL INFORMATION** (the following information may be disclosed by the Firm and its Agents): \_\_\_\_\_  
39 \_\_\_\_\_  
40 \_\_\_\_\_  
41 \_\_\_\_\_  
42 \_\_\_\_\_  
43 \_\_\_\_\_  
44 **DEFINITION OF MATERIAL ADVERSE FACTS**  
45 A "Material Adverse Fact" is defined in Wis. Stat. § 452.01(5g) as an Adverse Fact that a party indicates is of such  
46 significance, or that is generally recognized by a competent licensee as being of such significance to a reasonable  
47 party, that it affects or would affect the party's decision to enter into a contract or agreement concerning a transaction  
48 or affects or would affect the party's decision about the terms of such a contract or agreement.  
49 An "Adverse Fact" is defined in Wis. Stat. § 452.01(1e) as a condition or occurrence that a competent licensee  
50 generally recognizes will significantly and adversely affect the value of the property, significantly reduce the structural  
51 integrity of improvements to real estate, or present a significant health risk to occupants of the property; or information  
52 that indicates that a party to a transaction is not able to or does not intend to meet his or her obligations under a  
53 contract or agreement made concerning the transaction.  
54 **NOTICE ABOUT SEX OFFENDER REGISTRY** You may obtain information about the sex offender registry and persons  
55 registered with the registry by contacting the Wisconsin Department of Corrections on the Internet at  
56 <http://www.doc.wi.gov> or by telephone at 608-240-5830.  
57 No representation is made as to the legal validity of any provision or the adequacy of any provision in any specific transaction.  
58 Drafted by Attorney Debra Peterson Conrad

Produced with zipForm® by zipLogix 18070 Fifteen Mile Road, Fraser, Michigan 48026 [www.ziplogix.com](http://www.ziplogix.com)

**James M. Young, MBA**  
Senior Vice President  
[james.young@jll.com](mailto:james.young@jll.com)  
+1 262 853 4002

**Tony Haning**  
Vice President  
+1 414 944 2110  
[tony.haning@jll.com](mailto:tony.haning@jll.com)

Although information has been obtained from sources deemed reliable, neither Owner nor JLL makes any guarantees, warranties or representations, express or implied, as to the completeness or accuracy as to the information contained herein. Any projections, opinions, assumptions or estimates used are for example only. There may be differences between projected and actual results, and those differences may be material. The Property may be withdrawn without notice. Neither Owner nor JLL accepts any liability for any loss or damage suffered by any party resulting from reliance on this information. If the recipient of this information has signed a confidentiality agreement regarding this matter, this information is subject to the terms of that agreement. ©2024. Jones Lang LaSalle IP, Inc. All rights reserved