

# RESIDENTIAL CARE FACILITY WITH CUP

## PALM DESERT



### 44755 DEEP CANYON DR, PALM DESERT

## FEATURES

- Unique 6-bed, 7-bath residence and 1 bed/1 bath casita totaling 4,162 SF converted into a residential care facility in the heart of Palm Desert
- Conditional Use Permit (CUP) in place for a residential care facility or transitional housing
- 3,613 SF Main home includes 6 beds and 7 baths; 549 SF casita includes 1 bed and 1 bath
- Functional residence includes spacious main living area with fireplace and private bathrooms and patio access for each bedroom
- Expansive outdoor space includes large covered patio and outdoor kitchen, all fully enclosed
- Great location on Deep Canyon Drive just off Highway 111 with a myriad of dining, shopping, and entertainment just minutes away
- Easy access to all desert cities

**PRICE: \$1,300,000 (\$312/SF)**



VICINITY MAP



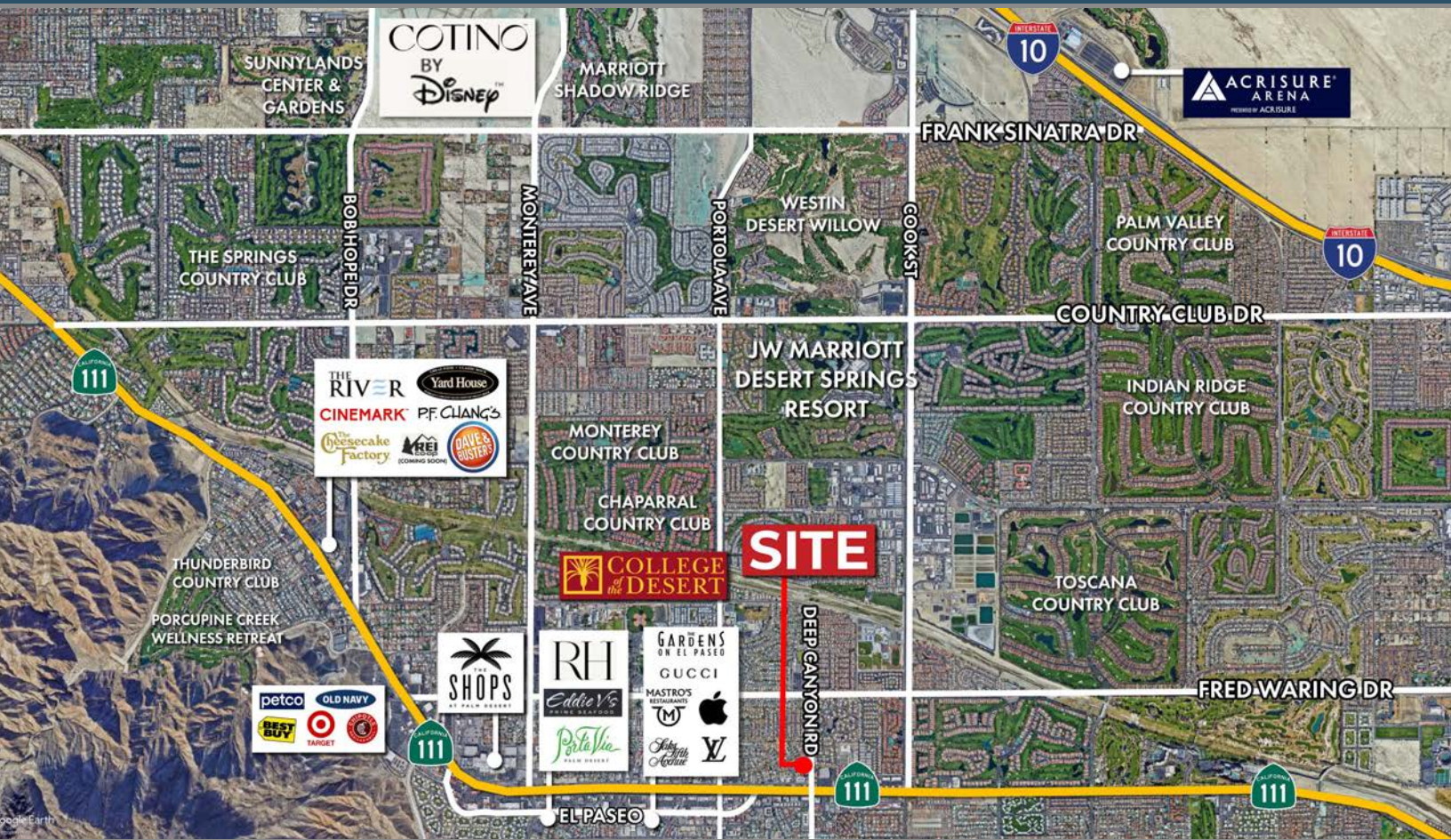
**SUSAN HARVEY**  
DRE #00957590  
susan@dppllc.com  
Cell: 760.250.8992



**EMILY HARVEY**  
DRE #02229612  
emily@dppllc.com  
Cell: 760.636.3500

# RESIDENTIAL CARE FACILITY WITH CUP

44755 DEEP CANYON, PALM DESERT  
LOCATION OVERVIEW



## SITE AMENITIES

- **Location:** 44755 Deep Canyon Dr, Palm Desert
- **APNs:** 625-075-006
- **Parcel Size:** 0.3 AC (13,068 SF) (According to County Assessor's Information)
- **Zoning:** DE - O (Downtown Edge, Transition Overlay)
- **General Plan:** [Downtown](#)
- **Year Built:** 2011
- **Electricity:** One Meter
- **Water:** One Meter
- **Parking:** 9 spaces / Automatic gate
- **Roll-Up Doors:** One (1) Ground Level
- **HVAC:** One HVAC unit in main home; mini-split in casita
- **Comments:** Rare opportunity to acquire a uniquely-designed residential care facility with permitting in place. Its functionality and desirable location add additional value to this exciting investment opportunity.

## PROPERTY PHOTO



## DEMOGRAPHICS

	1 Mile	3 Mile	5 Mile
<b>Population</b>	12,961	62,217	123,498
<b>No. of Households</b>	5,737	29,795	58,054
<b>Avg. Household Income</b>	\$109,572	\$124,522	\$125,255

760.360.8200 | [DesertPacificProperties.com](http://DesertPacificProperties.com) | 44267 Monterey Ave, Ste. A, Palm Desert, CA 92260

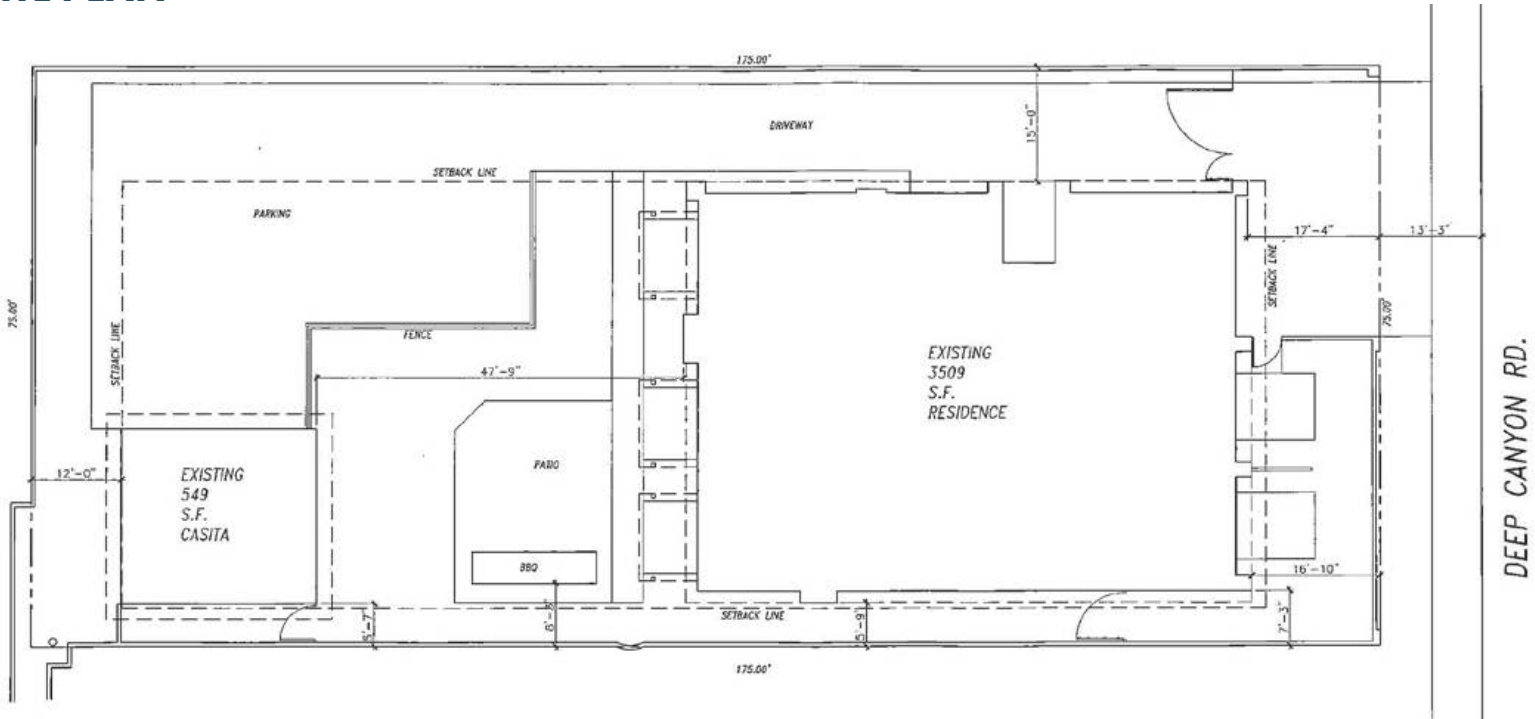
Disclaimer: The information provided has been obtained from sources believed reliable. While we do not doubt its accuracy, we have not verified it and make no guarantee, warrant or representation about it. Buyer is strongly encouraged to independently confirm its accuracy and completeness. Any projections, opinions assumptions or estimates used are for example only, and may not accurately represent the current or future performance of the property.

# RESIDENTIAL CARE FACILITY WITH CUP

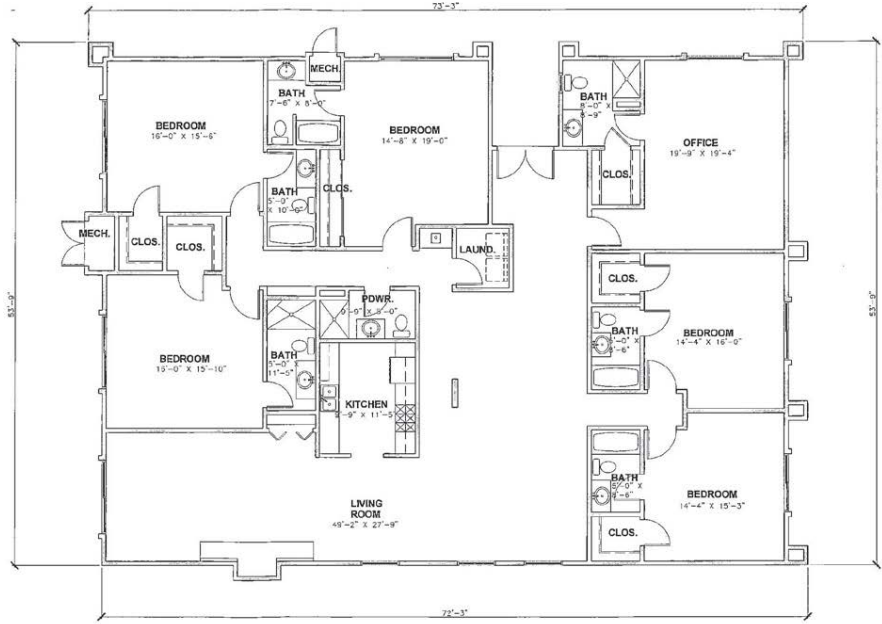
44755 DEEP CANYON, PALM DESERT  
FLOOR PLAN AND SITE PLAN



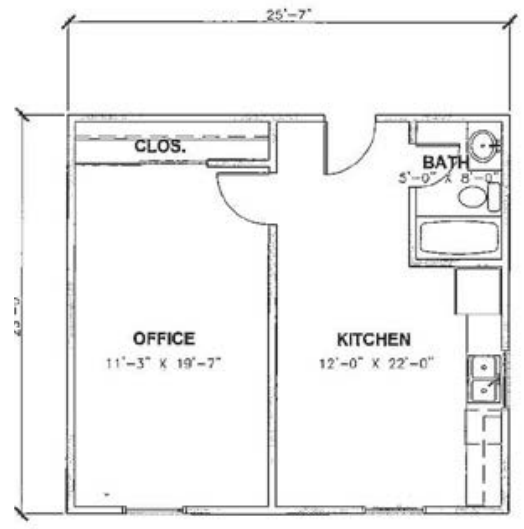
## SITE PLAN



## FLOOR PLAN



**MAIN HOME FLOOR PLAN**



**CASITA FLOOR PLAN**

760.360.8200 | [DesertPacificProperties.com](http://DesertPacificProperties.com) | 44267 Monterey Ave, Ste. A, Palm Desert, CA 92260

Disclaimer: The information provided has been obtained from sources believed reliable. While we do not doubt its accuracy, we have not verified it and make no guarantee, warrant or representation about it. Buyer is strongly encouraged to independently confirm its accuracy and completeness. Any projections, opinions assumptions or estimates used are for example only, and may not accurately represent the current or future performance of the property.

# RESIDENTIAL CARE FACILITY WITH CUP

44755 DEEP CANYON, PALM DESERT

PROPERTY PHOTOS



760.360.8200 | [DesertPacificProperties.com](http://DesertPacificProperties.com) | 44267 Monterey Ave, Ste. A, Palm Desert, CA 92260

Disclaimer: The information provided has been obtained from sources believed reliable. While we do not doubt its accuracy, we have not verified it and make no guarantee, warrant or representation about it. Buyer is strongly encouraged to independently confirm its accuracy and completeness. Any projections, opinions, assumptions or estimates used are for example only, and may not accurately represent the current or future performance of the property.

# RESIDENTIAL CARE FACILITY WITH CUP

44755 DEEP CANYON, PALM DESERT

PROPERTY AERIALS



760.360.8200 | [DesertPacificProperties.com](http://DesertPacificProperties.com) | 44267 Monterey Ave, Ste. A, Palm Desert, CA 92260

Disclaimer: The information provided has been obtained from sources believed reliable. While we do not doubt its accuracy, we have not verified it and make no guarantee, warrant or representation about it. Buyer is strongly encouraged to independently confirm its accuracy and completeness. Any projections, opinions assumptions or estimates used are for example only, and may not accurately represent the current or future performance of the property.