



**ARES  
INDUSTRIAL  
MANAGEMENT**

# 2200 SULLIVAN

2200 SULLIVAN ROAD, AURORA, IL 60506

96,150 Leasable SQ FT | Class A Warehouse Facility



## BUILDING HIGHLIGHTS

- 96,150 SF Available
- 2,080 SF Office
- 36' Clear Height
- ±90 Trailer Stalls
- 11 Exterior Docks (expandable)  
1 Drive-In Door
- ±103 Car Parking Spaces
- New construction with immediate access to I-88 via Orchard Road

NICK KREJCI

1211 W. 22nd St, Ste 529

Oak Brook, IL 60523

630-200-3874

nkrejci@coreindrealty.com

NOEL S. LISTON

1211 W. 22nd St, Ste 529

Oak Brook, IL 60523

630-786-2424

nliston@coreindrealty.com



**CORE** INDUSTRIAL  
REALTY

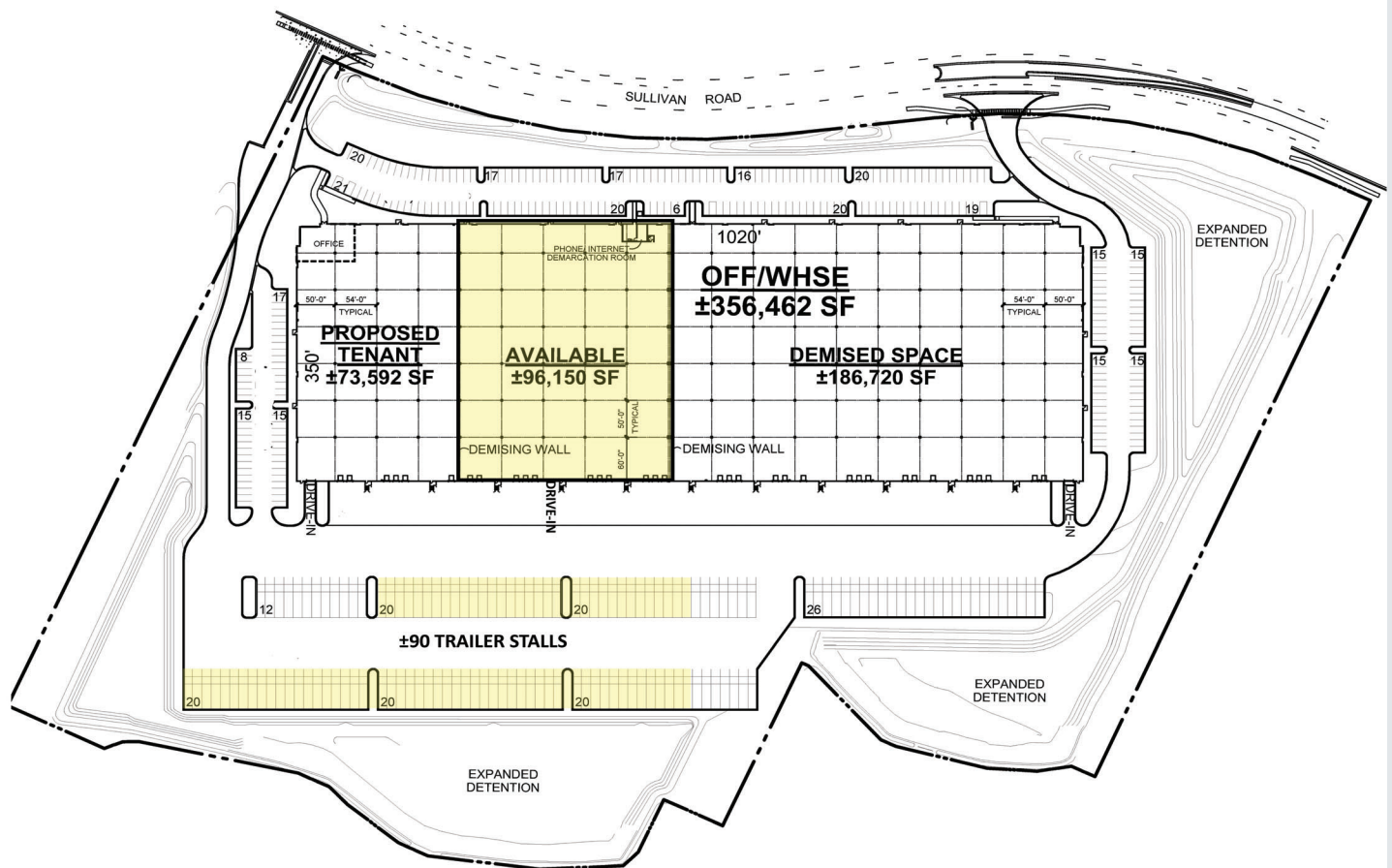


**ARES  
INDUSTRIAL  
MANAGEMENT**

# 2200 SULLIVAN

2200 SULLIVAN ROAD, AURORA, IL 60506

96,150 Leasable SQ FT | Class A Warehouse Facility



NICK KREJCI  
1211 W. 22nd St, Ste 529  
Oak Brook, IL 60523  
630-200-3874  
nkrejci@coreindrealty.com

NOEL S. LISTON  
1211 W. 22nd St, Ste 529  
Oak Brook, IL 60523  
630-786-2424  
nliston@coreindrealty.com





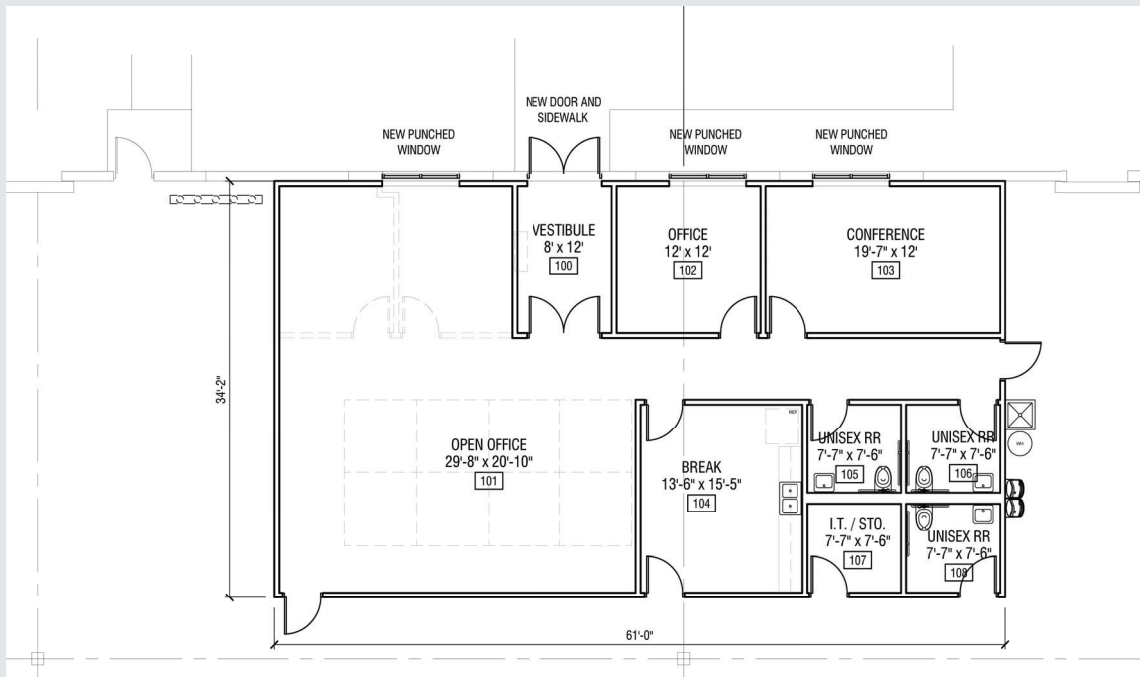


ARES  
INDUSTRIAL  
MANAGEMENT

# 2200 SULLIVAN

2200 SULLIVAN ROAD, AURORA, IL 60506

96,150 Leasable SQ FT | Class A Warehouse Facility



NICK KREJCI

1211 W. 22nd St, Ste 529

Oak Brook, IL 60523

630-200-3874

[nkrejci@coreindrealty.com](mailto:nkrejci@coreindrealty.com)

NOEL S. LISTON

1211 W. 22nd St, Ste 529

Oak Brook, IL 60523

630-786-2424

[nliston@coreindrealty.com](mailto:nliston@coreindrealty.com)

