

# Executive Suites

123 Church Street | New Haven, CT

CBRE and the ownership of 123 Church Street are pleased to offer executive suites located on the third floor. These professional suites are perfect for individuals needing privacy to work with short term commitments. The building is within walking distance to Yale-New Haven Hospital, the Medical School and courthouses.

- + Offering single and double offices with lockable doors
- + Multiple conference rooms
- + Shared breakroom
- + Fully furnished with quality finishes

## Great Location, Close to All Amenities



## Executive Suites

123 Church Street | New Haven, CT

For Lease

## Building Highlights

### + Central Business District Location

- Enjoy walking distance to the City's great restaurants, bars, theatres, the courthouses and hospital.

### + Nicely Appointed Office Space

- Retain value of attractive office finishes; glassed offices, conference rooms and working windows capture natural light; high-end office furniture and work stations available.

### + Desirable, Operable Windows

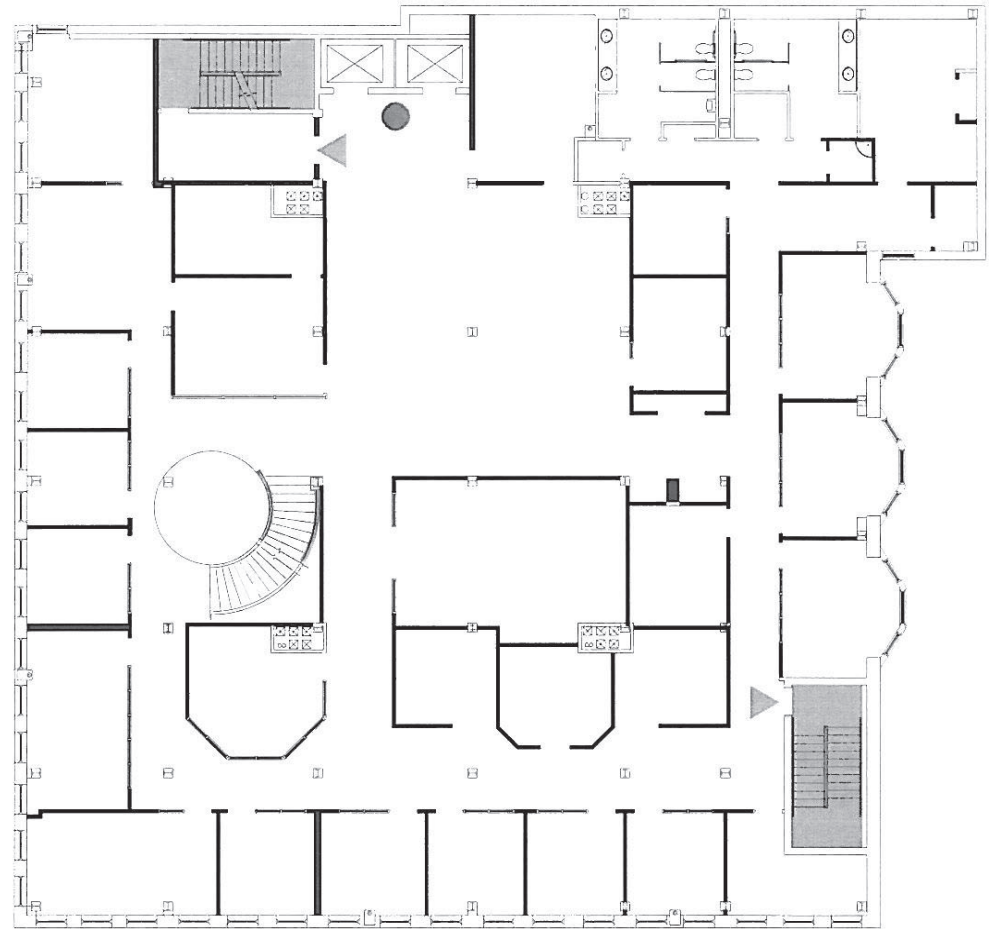
- Premises features fully functioning windows providing access to fresh air, a rare market benefit.

### + Parking

- Structured and surface lot across Chapel Street

### + Pricing

- Private offices starting at \$895/month.



## Contact Us

### David Hansen

Vice President

+1 203 777 5996

david.hansen@cbre.com

© 2023 CBRE, Inc. All rights reserved. This information has been obtained from sources believed reliable but has not been verified for accuracy or completeness. CBRE, Inc. makes no guarantee, representation or warranty and accepts no responsibility or liability as to the accuracy, completeness, or reliability of the information contained herein. You should conduct a careful, independent investigation of the property and verify all information. Any reliance on this information is solely at your own risk. CBRE and the CBRE logo are service marks of CBRE, Inc. All other marks displayed on this document are the property of their respective owners, and the use of such marks does not imply any affiliation with or endorsement of CBRE. Photos herein are the property of their respective owners. Use of these images without the express written consent of the owner is prohibited.