

1124

Bedford Avenue
Brooklyn, NY 11216

PREMIERE REAL ESTATE GROUP INC. EXCLUSIVE LISTING

Prime Clinton Hill Retail Corridor

For Lease | Ground Floor Retail Unit + Basement

Asking Rent: \$7,950 Per Month

Size: 1,313 SF – Ground Floor
1,352 SF – Basement
2,665 Total Rentable SF

Ceiling Heights: 14 FT – Ground Floor
10 FT – Basement

Frontage: 37 FT on Bedford Avenue

Asking Rent: \$7,950 Per Month (\$35.80 PSF)

Offering Description:

Premier Real Estate Group Inc. has been retained on an exclusive basis to arrange for the leasing of 1124 Bedford Avenue, a 2,665 square-foot (above + below grade) retail unit in Clinton Hill, Brooklyn. The unit is located at the base of a new six-story luxury condo development. It features 37 feet of frontage on Bedford Avenue, offering excellent retail exposure and significant traffic counts in a prime commercial corridor. The property is surrounded by a variety of businesses including homegoods stores, art galleries, clothing stores, educational institutions, medical/professional offices, coffee shops, bars and restaurants. In addition, the neighborhood also offers a mixture of beautiful prewar brownstones and new large developments. In addition, the property is a 10-minute drive away from the Brooklyn Hospital Center and Interfaith Medical Center. Nearby tenants include Home Frite, Brooklyn House of Comedy, Oaxaca Taqueria, Playground Coffee Shop, Metropolitan Citymarket, Bed-Stuy YMCA and more. The G, A and C subway lines are located within a short walk away from the property.



CONTACT:

Shawn Sadaghati

Premiere Real Estate Group Inc.

Licensed Real Estate Broker

Email: Shawn@pregcorp.com

Mobile: 917-796-7475 | Office: 516-355-9307

1124

Bedford Avenue
Brooklyn, NY 11216

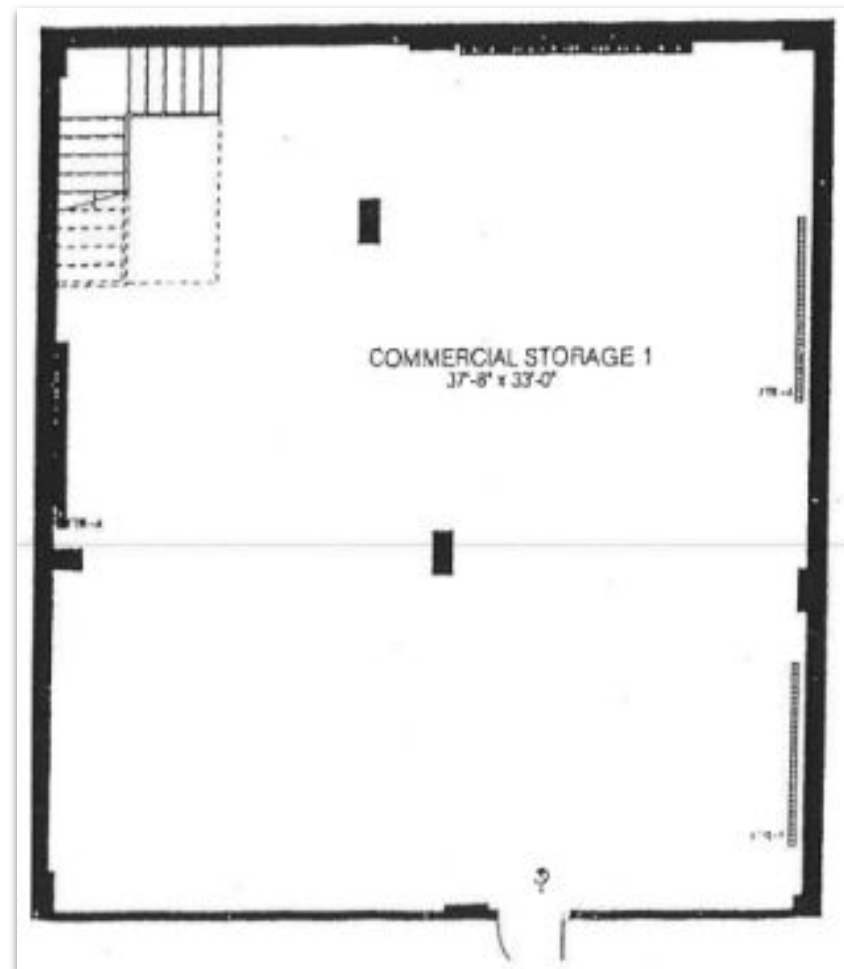
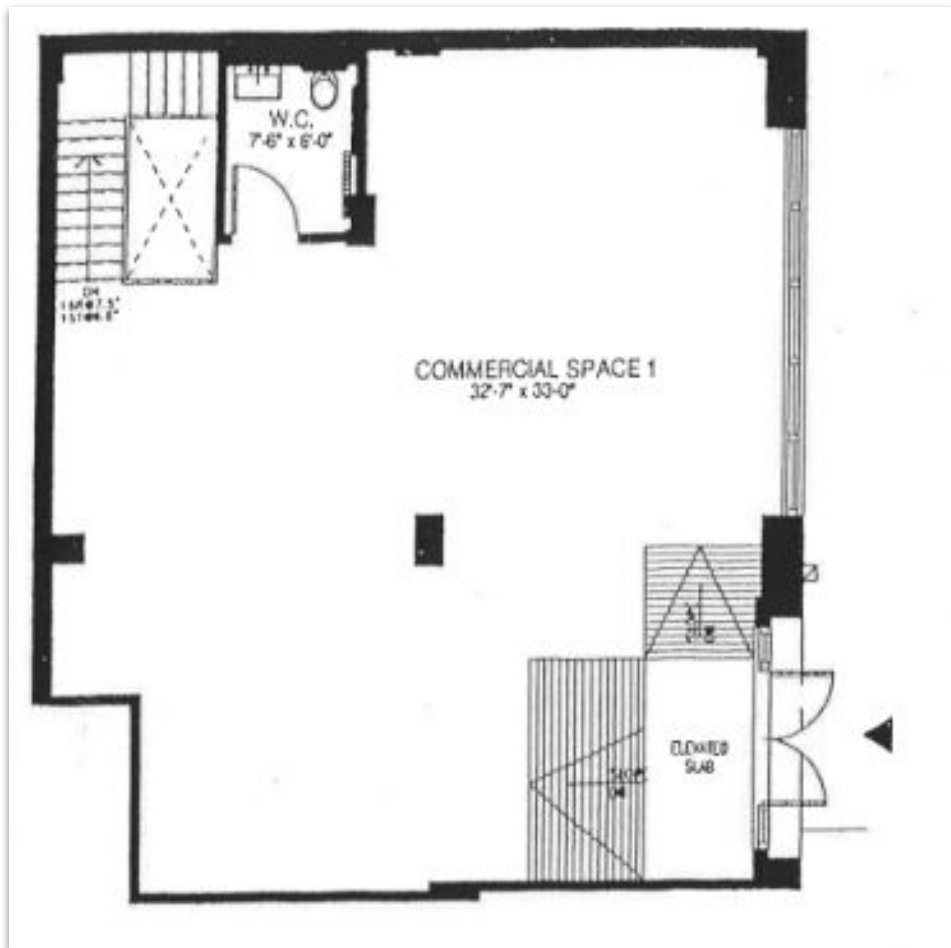
PREMIERE REAL ESTATE GROUP INC. EXCLUSIVE LISTING

Prime Clinton Hill Retail Corridor

For Lease | Ground Floor Retail Unit + Basement

Asking Rent: \$7,950 Per Month

FLOOR PLANS



1124

Bedford Avenue
Brooklyn, NY 11216

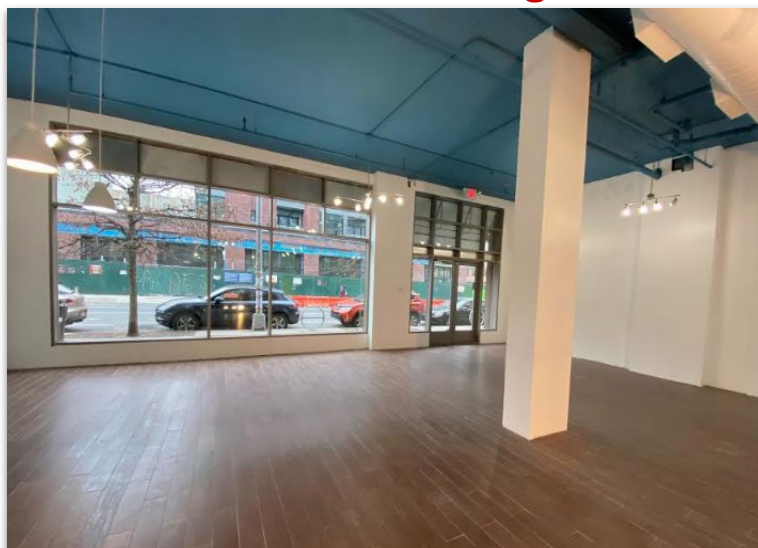
PREMIERE REAL ESTATE GROUP INC. EXCLUSIVE LISTING

Prime Clinton Hill Retail Corridor

For Lease | Ground Floor Retail Unit + Basement

Asking Rent: \$7,950 Per Month

GROUND FLOOR PHOTOS



1124

Bedford Avenue
Brooklyn, NY 11216

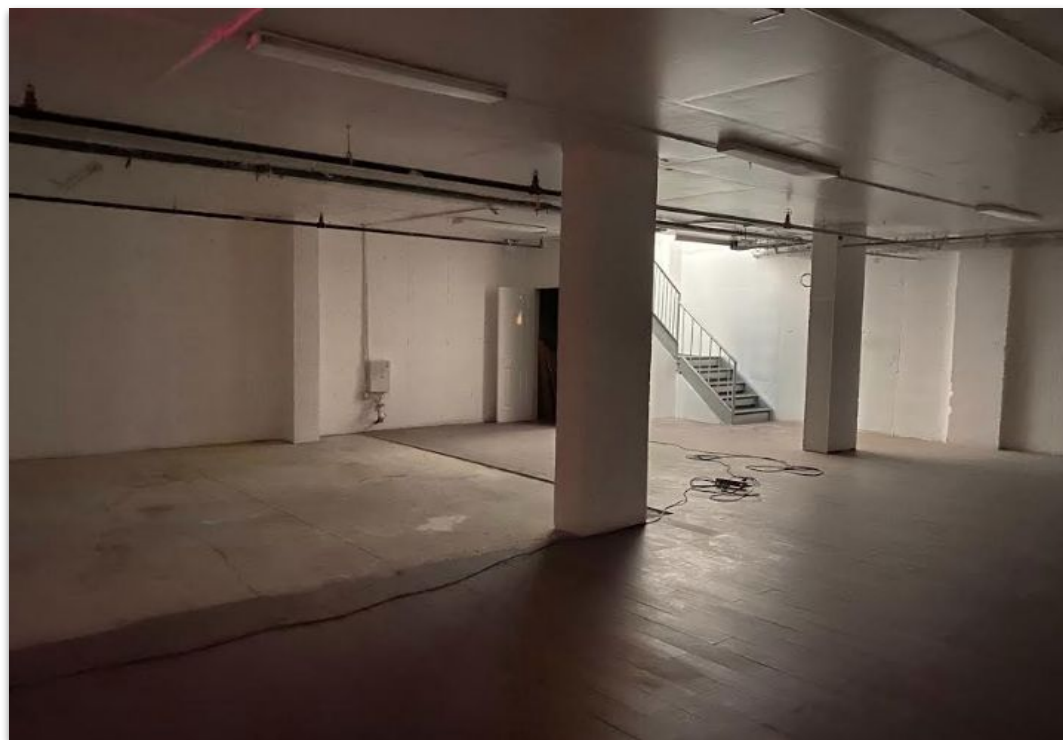
PREMIERE REAL ESTATE GROUP INC. EXCLUSIVE LISTING

Prime Clinton Hill Retail Corridor

For Lease | Ground Floor Retail Unit + Basement

Asking Rent: \$7,950 Per Month

BASEMENT PHOTOS



1124

Bedford Avenue
Brooklyn, NY 11216

PREMIERE REAL ESTATE GROUP INC. EXCLUSIVE LISTING

Prime Clinton Hill Retail Corridor

For Lease | Ground Floor Retail Unit + Basement

Asking Rent: \$7,950 Per Month

EXTERIOR PHOTOS



1124

Bedford Avenue
Brooklyn, NY 11216

PREMIERE REAL ESTATE GROUP INC. EXCLUSIVE LISTING

Prime Clinton Hill Retail Corridor

For Lease | Ground Floor Retail Unit + Basement

Asking Rent: \$7,950 Per Month

SURROUNDING RETAILERS



Although all information furnished regarding property for sale, rental, or financing is from sources deemed reliable, such information has not been verified and no express representation is made nor is any to be implied as to the accuracy thereof and it is submitted subject to errors, omissions, change of price, rental or other conditions, prior sale, lease or financing, or withdrawal without notice and to any special conditions imposed by our principal.

1124

Bedford Avenue
Brooklyn, NY 11216

NEIGHBORHOOD PHOTOS

PREMIERE REAL ESTATE GROUP INC. EXCLUSIVE LISTING

Prime Clinton Hill Retail Corridor

For Lease | Ground Floor Retail Unit + Basement

Asking Rent: \$7,950 Per Month



Although all information furnished regarding property for sale, rental, or financing is from sources deemed reliable, such information has not been verified and no express representation is made nor is any to be implied as to the accuracy thereof and it is submitted subject to errors, omissions, change of price, rental or other conditions, prior sale, lease or financing, or withdrawal without notice and to any special conditions imposed by our principal.

1124

Bedford Avenue
Brooklyn, NY 11216

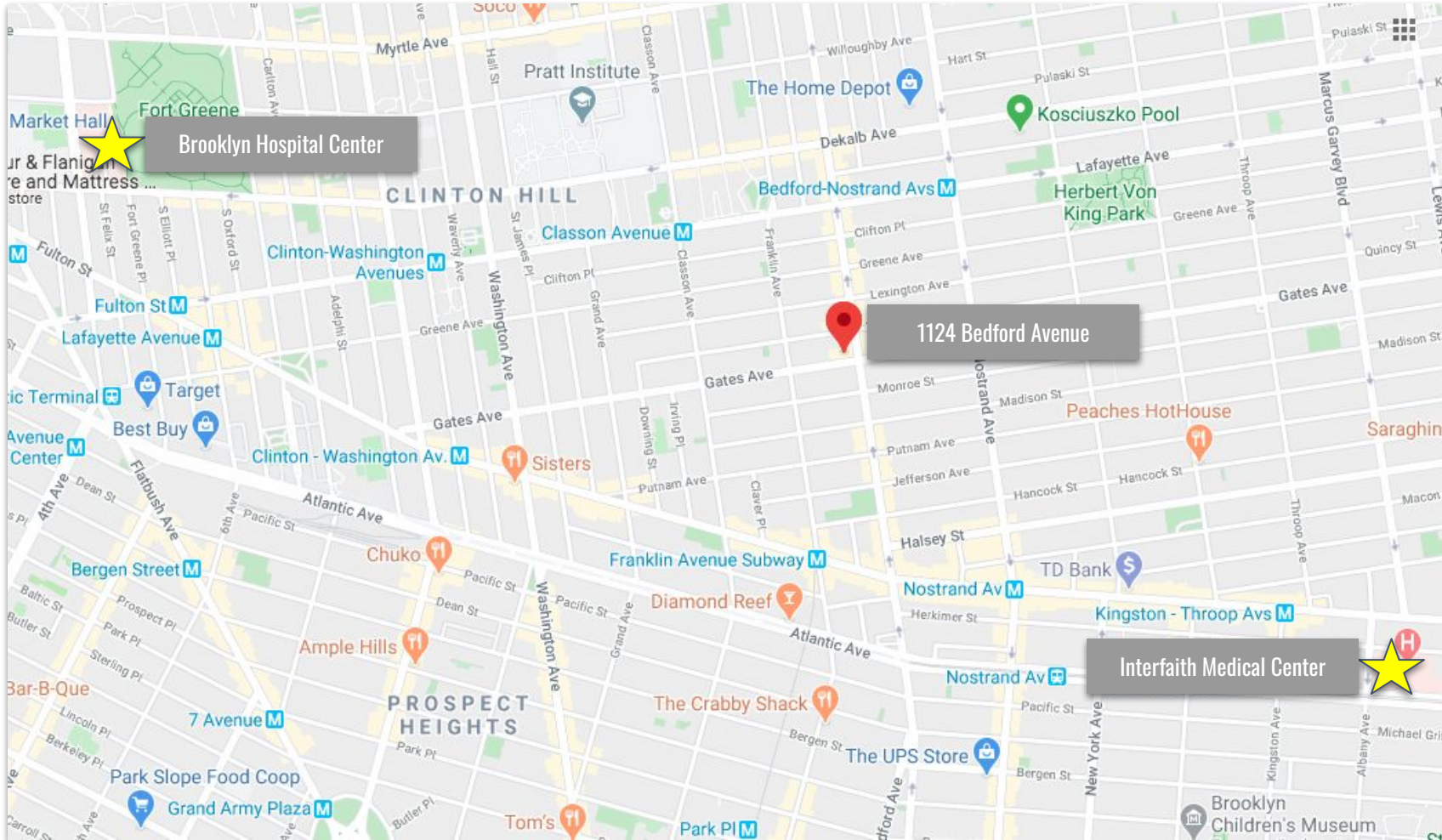
PREMIERE REAL ESTATE GROUP INC. EXCLUSIVE LISTING

Prime Clinton Hill Retail Corridor

For Lease | Ground Floor Retail Unit + Basement

Asking Rent: \$7,950 Per Month

NEARBY HOSPITALS



1124

Bedford Avenue
Brooklyn, NY 11216

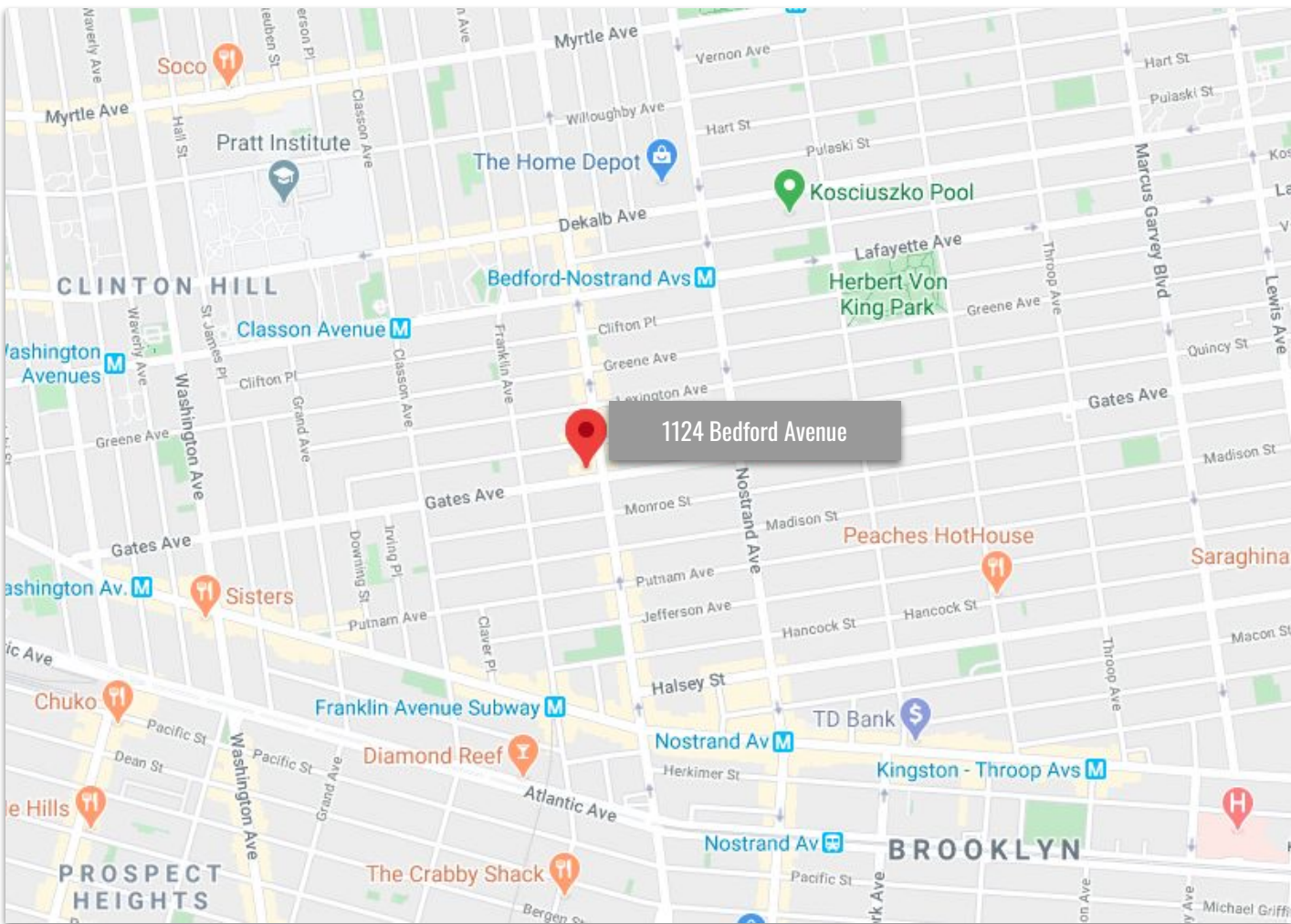
PREMIERE REAL ESTATE GROUP INC. EXCLUSIVE LISTING

Prime Clinton Hill Retail Corridor

For Lease | Ground Floor Retail Unit + Basement

Asking Rent: \$7,950 Per Month

PROPERTY MAP



Nearby Retail

- Metropolitan Citymarket
- Greenfarm Supermarket
- The Home Depot
- C-Town Supermarket
- Family Dollar
- Atlas Wine Merchants
- Walgreens

Nearby Restaurants

- Do or Dive Bar
- Pilar Cuban Bakery
- Stonefruit Espresso + Kitchen
- Calaca
- Speedy Romeo
- Chilo's Taco Truck + Bar
- Hart's
- Sushi Tatsu
- Oaxaca Taqueria
- Clemetine Bakery
- Nice Pizza

Amenities/Attractions

- Herbert Von King Park
- Bedford-Stuyvesant YMCA
- Pratt Institute
- Interfaith Medical Center
- Brooklyn Hospital Center
- Fort Greene Park
- G, A, C Subway Lines